

# Veritas™ Enterprise Administrator User's Guide

HP-UX

5.0.1



# Veritas Storage Foundation™ VEA User's Guide

The software described in this book is furnished under a license agreement and may be used only in accordance with the terms of the agreement.

Product version: 5.0.1

Document version: 5.0.1.0

## Legal Notice

Copyright © 2009 Symantec Corporation. All rights reserved.

Symantec, the Symantec Logo, Veritas, Veritas Storage Foundation are trademarks or registered trademarks of Symantec Corporation or its affiliates in the U.S. and other countries. Other names may be trademarks of their respective owners.

The product described in this document is distributed under licenses restricting its use, copying, distribution, and decompilation/reverse engineering. No part of this document may be reproduced in any form by any means without prior written authorization of Symantec Corporation and its licensors, if any.

THE DOCUMENTATION IS PROVIDED "AS IS" AND ALL EXPRESS OR IMPLIED CONDITIONS, REPRESENTATIONS AND WARRANTIES, INCLUDING ANY IMPLIED WARRANTY OF MERCHANTABILITY, FITNESS FOR A PARTICULAR PURPOSE OR NON-INFRINGEMENT, ARE DISCLAIMED, EXCEPT TO THE EXTENT THAT SUCH DISCLAIMERS ARE HELD TO BE LEGALLY INVALID. SYMANTEC CORPORATION SHALL NOT BE LIABLE FOR INCIDENTAL OR CONSEQUENTIAL DAMAGES IN CONNECTION WITH THE FURNISHING, PERFORMANCE, OR USE OF THIS DOCUMENTATION. THE INFORMATION CONTAINED IN THIS DOCUMENTATION IS SUBJECT TO CHANGE WITHOUT NOTICE.

The Licensed Software and Documentation are deemed to be commercial computer software as defined in FAR 12.212 and subject to restricted rights as defined in FAR Section 52.227-19 "Commercial Computer Software - Restricted Rights" and DFARS 227.7202, "Rights in Commercial Computer Software or Commercial Computer Software Documentation", as applicable, and any successor regulations. Any use, modification, reproduction release, performance, display or disclosure of the Licensed Software and Documentation by the U.S. Government shall be solely in accordance with the terms of this Agreement.

Symantec Corporation  
350 Ellis Street  
Mountain View, CA 94043  
<http://www.symantec.com>

# Technical Support

Symantec Technical Support maintains support centers globally. Technical Support's primary role is to respond to specific queries about product features and functionality. The Technical Support group also creates content for our online Knowledge Base. The Technical Support group works collaboratively with the other functional areas within Symantec to answer your questions in a timely fashion. For example, the Technical Support group works with Product Engineering and Symantec Security Response to provide alerting services and virus definition updates.

Symantec's maintenance offerings include the following:

- A range of support options that give you the flexibility to select the right amount of service for any size organization
- Telephone and Web-based support that provides rapid response and up-to-the-minute information
- Upgrade assurance that delivers automatic software upgrade protection
- Global support that is available 24 hours a day, 7 days a week
- Advanced features, including Account Management Services

For information about Symantec's Maintenance Programs, you can visit our Web site at the following URL:

[www.symantec.com/techsupp/](http://www.symantec.com/techsupp/)

## Contacting Technical Support

Customers with a current maintenance agreement may access Technical Support information at the following URL:

[www.symantec.com/techsupp/](http://www.symantec.com/techsupp/)

Before contacting Technical Support, make sure you have satisfied the system requirements that are listed in your product documentation. Also, you should be at the computer on which the problem occurred, in case it is necessary to replicate the problem.

When you contact Technical Support, please have the following information available:

- Product release level
- Hardware information
- Available memory, disk space, and NIC information
- Operating system

- Version and patch level
- Network topology
- Router, gateway, and IP address information
- Problem description:
  - Error messages and log files
  - Troubleshooting that was performed before contacting Symantec
  - Recent software configuration changes and network changes

## Licensing and registration

If your Symantec product requires registration or a license key, access our technical support Web page at the following URL:

[www.symantec.com/techsupp/](http://www.symantec.com/techsupp/)

## Customer service

Customer service information is available at the following URL:

[www.symantec.com/techsupp/](http://www.symantec.com/techsupp/)

Customer Service is available to assist with the following types of issues:

- Questions regarding product licensing or serialization
- Product registration updates, such as address or name changes
- General product information (features, language availability, local dealers)
- Latest information about product updates and upgrades
- Information about upgrade assurance and maintenance contracts
- Information about the Symantec Buying Programs
- Advice about Symantec's technical support options
- Nontechnical presales questions
- Issues that are related to CD-ROMs or manuals

## Documentation feedback

Your feedback on product documentation is important to us. Send suggestions for improvements and reports on errors or omissions. Include the title and document version (located on the second page), and chapter and section titles of the text on which you are reporting. Send feedback to:

[clustering\\_docs@symantec.com](mailto:clustering_docs@symantec.com)

## Maintenance agreement resources

If you want to contact Symantec regarding an existing maintenance agreement, please contact the maintenance agreement administration team for your region as follows:

|                                 |  |
|---------------------------------|--|
| Asia-Pacific and Japan          | <a href="mailto:customercare_apac@symantec.com">customercare_apac@symantec.com</a> |
| Europe, Middle-East, and Africa | <a href="mailto:semea@symantec.com">semea@symantec.com</a>                         |
| North America and Latin America | <a href="mailto:supportsolutions@symantec.com">supportolutions@symantec.com</a>    |

## Additional enterprise services

Symantec offers a comprehensive set of services that allow you to maximize your investment in Symantec products and to develop your knowledge, expertise, and global insight, which enable you to manage your business risks proactively.

Enterprise services that are available include the following:

|                                  |  |
|----------------------------------|--|
| Symantec Early Warning Solutions | These solutions provide early warning of cyber attacks, comprehensive threat analysis, and countermeasures to prevent attacks before they occur.   |
| Managed Security Services        | These services remove the burden of managing and monitoring security devices and events, ensuring rapid response to real threats.  |
| Consulting Services              | Symantec Consulting Services provide on-site technical expertise from Symantec and its trusted partners. Symantec Consulting Services offer a variety of prepackaged and customizable options that include assessment, design, implementation, monitoring, and management capabilities. Each is focused on establishing and maintaining the integrity and availability of your IT resources. |
| Educational Services             | Educational Services provide a full array of technical training, security education, security certification, and awareness communication programs.   |

To access more information about Enterprise services, please visit our Web site at the following URL:

[www.symantec.com](http://www.symantec.com)

Select your country or language from the site index.

# Contents

|                         |  |    |
|-------------------------|--|----|
| Technical Support ..... | 4  |    |
| Chapter 1               | Introducing the Veritas Enterprise Administrator console ..... | 11 |
|                         | About the Veritas Enterprise Administrator console .....       | 11 |
|                         | VEA features .....   | 12 |
|                         | Veritas Enterprise Administrator home page .....               | 13 |
|                         | Main window .....  | 14 |
|                         | Quick access bar .....   | 15 |
|                         | Object tree and grid .....                                     | 15 |
|                         | Menu bar .....   | 16 |
|                         | Toolbar .....  | 17 |
|                         | Status area .....  | 17 |
|                         | Multiple selections .....                                      | 18 |
|                         | Accessing tasks .....  | 18 |
|                         | Task throttling .....  | 18 |
|                         | Clearing finished tasks .....                                  | 18 |
|                         | Viewing task properties .....                                  | 18 |
|                         | Opening a new window .....                                     | 18 |
| Chapter 2               | Using Veritas Enterprise Administrator .....                   | 21 |
|                         | About Veritas Enterprise Administrator .....                   | 22 |
|                         | Setting up your system .....                                   | 22 |
|                         | Starting Veritas Enterprise Administrator .....                | 22 |
|                         | From a Windows client .....                                    | 23 |
|                         | From a UNIX client .....                                       | 23 |
|                         | Startup profile .....  | 24 |
|                         | Setting Veritas Enterprise Administrator preferences .....     | 25 |
|                         | Setting connection preferences .....                           | 26 |
|                         | Setting general preferences .....                              | 27 |
|                         | Setting advanced preferences .....                             | 27 |
|                         | Setting language preference .....                              | 27 |
|                         | Setting the console view .....                                 | 28 |
|                         | Setting user accounts .....                                    | 29 |
|                         | Viewing objects and object properties .....                    | 29 |

|   |    |
|---|----|
| Selecting objects .....                                   | 30 |
| Navigational view .....                                   | 30 |
| Details view .....  | 31 |
| Console view .....  | 31 |
| Tasks view .....  | 31 |
| Properties of an object .....                             | 32 |
| Performing tasks .....                                    | 32 |
| Running tasks from the menu bar .....                     | 32 |
| Running tasks from a popup menu .....                     | 33 |
| Running tasks from the task assistant .....               | 33 |
| Connecting and disconnecting hosts and domains .....      | 33 |
| Connecting to a host or domain .....                      | 34 |
| Logon authentication .....                                | 35 |
| Disconnecting from a host .....                           | 35 |
| Switching between connected hosts .....                   | 35 |
| Exiting the Veritas Enterprise Administrator client ..... | 36 |
| Viewing different products .....                          | 36 |
| Using the control panel .....                             | 36 |
| Viewing the alert log .....                               | 37 |
| Previous and next alert sets .....                        | 38 |
| Viewing alert details .....                               | 38 |
| Viewing the task log .....                                | 39 |
| Previous and next task sets .....                         | 39 |
| Task details .....  | 40 |
| Configuring logs .....                                    | 40 |
| Printing views .....                                      | 40 |
| Managing user profiles .....                              | 40 |
| Selecting a startup profile .....                         | 41 |
| Creating a new profile .....                              | 41 |
| Changing your password .....                              | 42 |
| Deleting a profile .....                                  | 42 |
| Firewall support .....                                    | 42 |
| Example 1 .....   | 43 |
| Example 2 .....   | 43 |
| Example 3 .....   | 44 |
| <br>Chapter 3   |    |
| Accessibility .....                                       | 45 |
| About accessibility .....                                 | 45 |
| Keyboard shortcuts .....                                  | 45 |
| About accelerators .....                                  | 45 |
| About mnemonics .....                                     | 46 |
| Keyboard mapping conventions .....                        | 46 |

|                    |    |
|--------------------|----|
| Dialog boxes ..... | 48 |
| Glossary .....     | 53 |
| Index .....        | 55 |



# Introducing the Veritas Enterprise Administrator console

This chapter includes the following topics:

- [About the Veritas Enterprise Administrator console](#)
- [VEA features](#)
- [Veritas Enterprise Administrator home page](#)
- [Main window](#)
- [Multiple selections](#)
- [Accessing tasks](#)
- [Opening a new window](#)

## About the Veritas Enterprise Administrator console

The Veritas Enterprise Administrator (VEA) Console displays data about application objects and connectivity in graphical form and provides a user interface for the many tools and functions.

Before using the VEA GUI, you should familiarize yourself with the following introductory topics:

- [VEA features](#)
- [Veritas Enterprise Administrator home page](#)
- [Main window](#)

## VEA features

You use the VEA to administer disks, volumes, and file systems on local or remote machines.

VEA consists of a server and a client. The server runs on a machine that is running the application to be monitored, such as VxVM. The client runs on Windows, HP, Linux, Solaris, and AIX machines that support the Java Runtime Environment.

VEA provides the following features:

- **Accessibility - Using the mouse and keyboard**  
Accelerators and mnemonics are provided as alternatives to using the mouse (refer to the VEA online help for more information).
- **Ease of use**  
The task-based user interface provides access to tasks through menus or a task list. Administrators can easily navigate and configure their systems, and browse through all of the objects on the system or view detailed information about a specific object.
- **Remote administration**  
Administrators can perform administration remotely or locally. The VEA client runs on UNIX, Linux, or Windows machines.
- **Java-based interface**  
A pure Java-based interface is used. Administrators can run VEA as a Java application.
- **Scalability**
- **VEA can handle systems containing large numbers of disks.** Administrators can view all of the objects on the system, or focus on a specific object or set of objects.
- **Security**  
Please refer to the VEA online help for information on communication between the client and server across a firewall.
- **Multiple VEA support**  
The VEA client can provide simultaneous access to multiple host machines. The administrator can use a single client session to connect to multiple hosts, view the objects on each host, and perform administrative tasks on each host. Each host machine must be running the VEA server.
- **Multiple views of objects**  
VEA provides multiple views of objects:
  - The main window tree and grid view lists objects on the system.

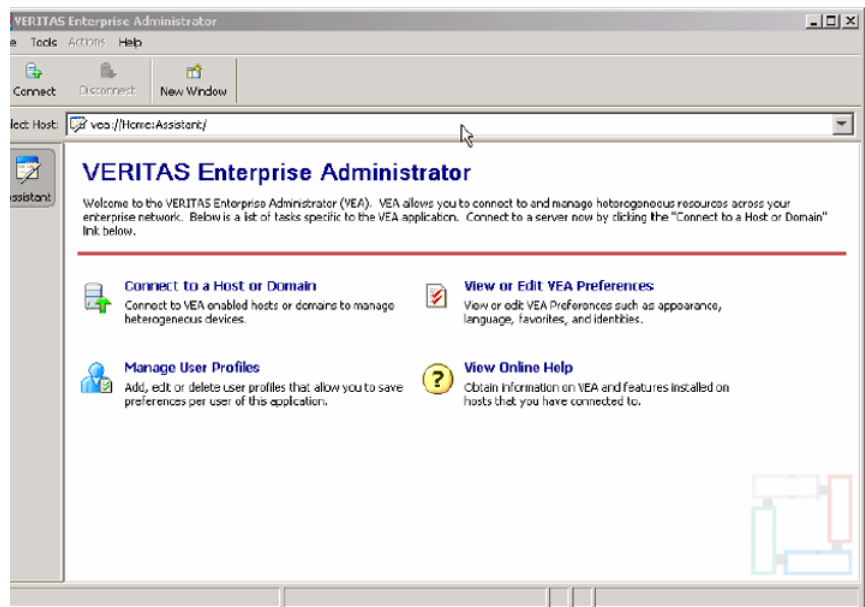
Other views are application dependent. For example, when running VxVM:

- The Disk View window displays a graphical view of volumes, disks, and other objects in a disk group.
- The Volume View window displays a graphical view of the volumes on a host.
- The Volume to Disk Mapping window shows the relationships between volumes and their underlying disks.

## Veritas Enterprise Administrator home page

Figure 1-1 shows the VEA home page, which is the first screen displayed when you invoke the VEA.

**Figure 1-1** VEA home page and assistant



The toolbar shows icons:

- Connect - to make a connection to a VEA-enabled host.
- Disconnect - to disconnect from a host.
- New Window - to open a new window

Using Assistant, you can browse the most significant and important tasks:

- **Connect to a Host or Domain**  
See [“Connecting and disconnecting hosts and domains”](#) on page 33.
- **View or Edit VEA Preferences**  
See [“Setting Veritas Enterprise Administrator preferences”](#) on page 25.
- **Manage User Profiles**  
See [“Managing user profiles”](#) on page 40.
- **View Online Help**

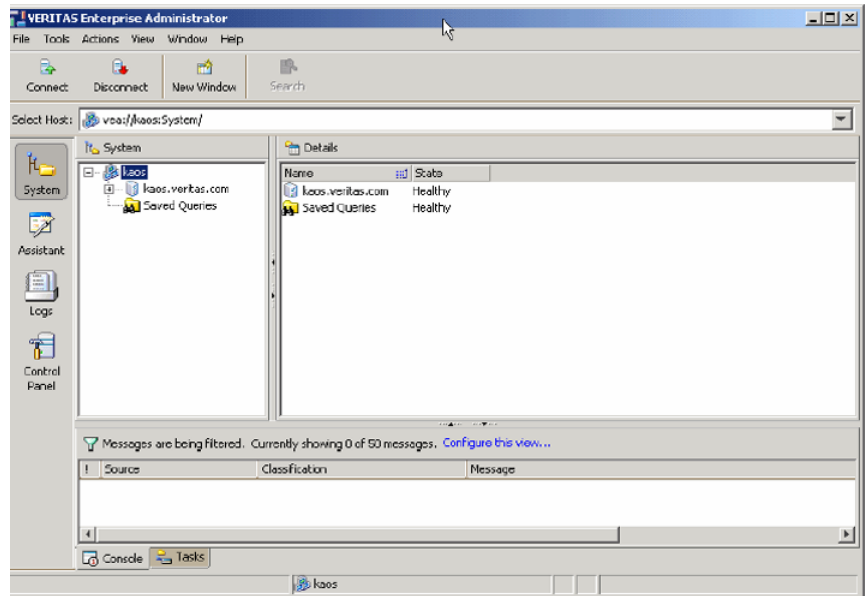
## Main window

Once you are connected to a host, the VEA Main Window is displayed. This consists of:

- [Quick access bar](#)
- [Object tree and grid](#)
- [Menu bar](#)
- [Toolbar](#)
- [Status area](#)

[Figure 1-2](#) shows the main window of VEA.

Figure 1-2 Main window



## Quick access bar

The quick access bar provides quick access to perspectives using the following icons:

- System
- Assistant
- Logs
- Control Panel

## Object tree and grid

The VEA main window is divided into two main panes:

- Left Pane (Object Tree)
- Right Pane (Grid)

### Object tree

Any host machines connected to the current VEA client session typically appear as nodes in the object tree.

## Grid

The right pane contains a grid, which is a tabular display of objects and their properties. The grid displays objects that belong to the group icon that is currently selected in the object tree (left pane).

The splitter is the vertical bar that separates the object tree from the grid. You can resize the left and right panes by pressing and holding the mouse button over the splitter and dragging the splitter to the left or right.

## Menu bar

The menu bar at the top of the main window contains the following menus:

- **File**

The File menu establishes new host connections, disconnects current host sessions, provides access to an object Properties window, handles page setup, executes print and print preview functions, or exits VEA.

- **Tools**

The Tools menu allows you to:

- Initiate the setting Preferences dialog
- Manage user profiles
- Maintain the VEA error console

- **Actions**

The Actions menu is a context-sensitive menu that launches tasks on a selected object. It is inactive until you connect to a host. When an object is selected, the Actions menu provides access to tasks appropriate for the selected object.

---

**Note:** If any DCLI operations are performed, in order for the changes to be reflected in the GUI, an **Actions > Rescan** operation must be performed.

---

- **View**

The View menu enables you to select the view displayed on the VEA console:

- Select **Connection** to switch between connected hosts.
- Selecting **Perspective** allows you to choose the display mode (**System**, **Assistant**, and so on).
- Select **Home** to return to the Home page.

- **Window**

The **Window** menu gives you access to the Tear off feature. This allows you to copy views displayed by the VEA Client into new windows. You can then view details of several different object types at the same time, and to correlate relationships between them.

Then select the view to be displayed in a new window from the drop-down menu.

- Help

The Help menu provides access to online help for VEA.

## Toolbar

The toolbar provides quick access for performing some of the program's most common tasks.

The toolbar displays the following options:

- Connect
- Disconnect
- New Window

The toolbar is context-sensitive. Based on the type of object selected in the tree view, it displays additional options for frequently used tasks

## Status area

The status area is at the bottom of the main window. It includes the Console View and Task View.

### Console view

When a host is selected, you can click on Console to bring up the Console View. This displays the most recent messages for the host. When a message is selected, additional information about that message is displayed.

You can also double-click on a selected message to display message properties in the Console Message Details dialog.

Select Configure this view to bring up the Preferences dialog, if you want to change the buffer and filter settings.

### Tasks view

Click on Tasks to bring up the Task View. This displays information about the current tasks.

## Multiple selections

You can select more than one object from a list (for example, when you need to add several disks into a disk group) using the SHIFT and CONTROL keys in conjunction with the left mouse button.

Use the SHIFT key to select a range of objects.

Use the CONTROL key to select individual objects.

## Accessing tasks

Most VEA tasks are performed by selecting objects and/or tasks and then completing the resulting dialog boxes. With VEA, you can access tasks from the menu bar and from a context-sensitive popup menu.

For a selected task, you can use the popup menu options: **Abort Task** to cancel the task; **Pause Task** to temporarily stop a task, **Resume Task** to continue the task; and **Throttle Task** to throttle a task.

## Task throttling

Task Throttling causes an operation to pause for the allowed amount of time whenever a disk I/O is performed, allowing the CPU and disks to perform other tasks.

Select the popup menu option Throttle Task to change the task priority. You can change the priority for a single task, or select Throttle All Tasks to apply the priority to all Volume Manager Tasks. Click OK to complete your selection.

## Clearing finished tasks

Tasks are persistent in the Tasks console. To remove completed tasks from the window, select Clear All Finished Tasks from the popup menu.

## Viewing task properties

To view task properties and the low-level commands used to perform a task, select the task and choose Properties from the popup menu.

## Opening a new window

At any time, you can open a new window and replicate the window currently displayed by selecting the New Window icon.

Alternatively, you can select:

File > New Window



# Using Veritas Enterprise Administrator

This chapter includes the following topics:

- [About Veritas Enterprise Administrator](#)
- [Setting up your system](#)
- [Starting Veritas Enterprise Administrator](#)
- [Setting Veritas Enterprise Administrator preferences](#)
- [Viewing objects and object properties](#)
- [Performing tasks](#)
- [Connecting and disconnecting hosts and domains](#)
- [Exiting the Veritas Enterprise Administrator client](#)
- [Viewing different products](#)
- [Using the control panel](#)
- [Viewing the alert log](#)
- [Viewing the task log](#)
- [Configuring logs](#)
- [Printing views](#)
- [Managing user profiles](#)
- [Firewall support](#)

## About Veritas Enterprise Administrator

The Veritas Enterprise Administrator (VEA) enables you to access all hosts on your network. It also provides task and setup functions that allow you to tailor your VEA environment prior to performing storage management procedures on those hosts.

## Setting up your system

VEA consists of a server (`vxsvc`) and a client (`vea`). You must install and run the VEA server on a UNIX machine running VxVM. You can install and run the VEA client on any Windows, HP, Linux, Solaris, or AIX machine that supports the Java Runtime Environment.

Before you can use VEA, you need to perform the following procedure.

### To prepare to use VEA

- 1 Install VxVM on the machine to be administered.
- 2 Install the VEA server and client on the machine to be administered.
- 3 If users other than root need to access VEA, set up security to specify which users can run VEA.
- 4 If you plan to run the VEA client from a machine other than the machine to be administered, install the VEA client on the machine where the client will run.
- 5 Start the VEA server on the machine to be administered.
- 6 Start the VEA client.

Refer to the Installation manuals for your products for details on how to install and set up your products and VEA.

## Starting Veritas Enterprise Administrator

Only users with appropriate privileges can run VEA. Refer to the Installation manuals for your products for information on security and access permissions.

You can use VEA to administer the local machine or a remote machine. The VxVM daemon (`vxconfigd`) and the VEA server (`vxsvc`) must be running on the machine to be administered. Once VEA is installed, the VEA server starts automatically at system startup.

You can start the VEA console from a Windows or UNIX client.

## From a Windows client

From a Windows client, you can start VEA from the Start menu, or from the command line.

### Using the start menu

To invoke VEA from the Start menu, click:

```
Start > All Programs > Symantec > Veritas Storage Foundation >  
Veritas Enterprise Administrator
```

### Using the command line

You can invoke VEA from a Windows command line.

#### To invoke VEA from the command line

- 1 Go to the directory where the VEA client is installed, for example:

```
<installed dir>\Veritas\Veritas Object bus\bin
```

- 2 Start the VEA client by running the batch file `vea.bat` from this location.

When starting the VEA client from the command line, the following options are available

|                    |  |
|--------------------|--|
| <code>-v</code>    | Shows the version of client console.   |
| <code>-c</code>    | Specifies the configuration file for advanced settings.  |
| <code>-host</code> | Specifies the host to connect to. If the username and password for the host is already stored, these will be used; otherwise, you will be prompted for your username and password. |

## From a UNIX client

You can invoke VEA from a UNIX command line.

### To invoke VEA from the command line

- 1 Go to the directory where VEA client is installed, for example:

```
/opt/VRTSob/bin
```

- 2 Start the VEA client by running the script `vea` from this location.

When starting the VEA client from the command line, the following options are available:

|                    |  |
|--------------------|--|
| <code>-v</code>    | Shows the version of client console.   |
| <code>-c</code>    | Specifies the configuration file for advanced settings.  |
| <code>-host</code> | Specifies the host to connect to. If the username and password for the host is already stored, these will be used; otherwise, you will be prompted for your username and password. |

## Startup profile

If you have selected a password protected profile as your startup profile, you are prompted to enter the password when VEA starts up.

Enter your password and click OK to continue, or click Select Profile to bring up the Select Profile dialog, which enables you to select an alternative profile.

Clicking Cancel will end the application.

### Selecting an alternate profile

Select one of the profiles from the list, and enter the password, if necessary.

Click OK to log in.

You can also select Tools > Manage Profiles to bring up the Manage Profiles dialog.

See [“Managing user profiles”](#) on page 40.

### If no profiles exist

If no profiles exist when you start VEA, the following message appears:

```
No profiles exist on this system. A new default profile has been created. If you want to create additional profiles, you may create using the "Tools" -> "Manage Profiles..." menu item
```

Click OK to continue.

You can also select Tools > Manage Profiles to bring up the Manage Profiles dialog. See [“Managing user profiles”](#) on page 40.

## Setting Veritas Enterprise Administrator preferences

You can set up your own individual preferences for running VEA using the VEA preferences feature. This offers the following selections:

- Connection  
See [“Setting connection preferences”](#) on page 26.
- Advanced  
See [“Setting advanced preferences”](#) on page 27.
- General  
See [“Setting general preferences”](#) on page 27.
- Language  
See [“Setting language preference”](#) on page 27.
- Security  
See [“Setting user accounts”](#) on page 29.
- Console View  
See [“Setting the console view”](#) on page 28.

To set preferences, you can either:

- Select Tools > Preferences.  
or
- Use the VEA Assistant feature, View or Edit VEA Preferences.

The Preferences window appears. Select your preferences, then, when you have made your selection:

- Press Apply to apply the selection.
- Press Reset to revert back to the original settings in effect before you opened the Preferences window.
- Press OK to apply and close the Preference Window.
- Press Cancel to discard the changes and close the Preference Window.

---

**Note:** You need to restart the GUI for the change to take effect.

---

## Setting connection preferences

The Connection tab allows you to set connection preferences.

### Adding and removing favorite hosts

Favorites displays a list of hosts that will be connected to by default at the startup of VEA if the username/password is saved for them. If the username /password is not saved for a particular host, then this information will be prompted for at the time of connection

Use the following procedure to add a host to Favorite Hosts.

#### To add a host to Favorite Hosts

- 1 Right click on any of the connected host nodes
- 2 Choose Add to Favorites from the popup menu.

### Removing a host from favorite hosts

Use the following procedure to remove a host from Favorites.

#### To remove a host from Favorites

- 1 In the Preferences Favorites window, highlight the host to be removed.
- 2 Click on **Remove**.

### Reconnecting hosts

By default, hosts under the Favorites are reconnected when logging on. That is, **Reconnect At Logon** is set to **Yes**.

You can avoid a host being reconnected at startup by setting **Reconnect At Logon** to **No**.

### Adjusting the history settings

To adjust the history settings, type the number of servers (hosts) for which information can be stored in the history file under Maximum Connections. The default value is 10.

The maximum limit for the number of hosts for which information can be stored is 99.

Press Apply to apply the changes, Reset to revert back the changes, OK to apply and close the Preference window, Cancel to discard and close the Preference window.

## Setting general preferences

The General tab allows you to set display and connection properties.

### Setting display properties

You can set the display properties for the Toolbar and Perspective Bar icons.

Icon text properties can be set to:

- No text - select **Icons**.
- Text displayed above, below, to the right, or left - select **Icons with Text**, then, select the position using the drop-down menu.

### Setting connection properties

You can use the **Switch focus to new host on connection** checkbox to enable or disable changing perspective when connecting to a new host.

## Setting advanced preferences

The **Advanced** tab allows you to set the action for temporary files, and to reset preference settings.

### Deleting temporary files on exit

You can delete all temporary files when you leave VEA by selecting the checkbox Delete temporary files on exit.

If you want to delete the temporary files immediately, click the button Delete Now.

### Restoring default values

Select Restore Defaults to restore application and system default values.

## Setting language preference

To set your language preference, select the Language tab. You can then set your preferred language to one of the languages supported by VEA and available on your machine. Selections may include:

- English (United Kingdom)
- French (France)
- Japanese (Japan)

- Korean (South Korea)
- Chinese (China)
- Chinese (Taiwan)
- English (United States)

## Setting the console view

The Console View tab allows you to set:

- Maximum number of unfiltered messages
- Filters

### Number of unfiltered messages

The Message Buffer value enables you to set a limit on the number of unfiltered messages held in the Console View buffer. By default, the number of unfiltered messages held in the buffer is set to 50. Use Enter Limit to modify the limit.

When the limit is reached, messages are discarded, starting at the oldest message.

### Filter messages

You can filter messages in the Console View by selecting the Activate Filter checkbox. Only messages that meet all the defined criteria (Severity, Source, and Classification) will be displayed. Criteria can be defined as:

- Severity - Select one or more of:
  - Critical - Indicating an event of high importance, such as system crash, or irrecoverable loss of data.
  - Warning - Indicating a recoverable error, with no data loss
  - Error - Indicating loss of functionality of data.
  - Information - Indicating an informational event.
- Source - Defines the host, or hosts, providing the source of the messages. Host names must be separated by commas.
- Classification - The type, or types, of message. Types must be separated by commas.

## Setting user accounts

User account information includes details about user ids., domains, and passwords. You can remove a user account, or set it to be the default account to be used for all connections.

Security settings allow you to validate authentication brokers.

## Viewing objects and object properties

Objects in the system are displayed in the Main Window and Tabular View.

See “[Main window](#)” on page 14.

The tree is a hierarchical display of object groups. The Tabular View displays a table of objects and a limited set of properties.

In the VEA client, objects typically represent entities in the product domain. For example, in the case of Veritas Volume Manager, the object might be a disk. You can use the views to browse objects and guide the operation of the client console.

There are four main views:

- Navigation View, at the left, which uses the tree structure
- Detailed View, at the right, which used table structure
- Console View, at the bottom
- Tasks View, at the bottom

The following functions are provided for simplifying viewing objects in the tree and Tabular View:

- To expand or collapse the hierarchy under a particular object group node in the tree:  
Click on the plus sign (+) or minus sign (-) icon next to that node.
- To display the objects in an object group listed in the object tree:  
Click on the object group. All objects that belong to the selected object group appear in Tabular View.
- To display the objects in an object group listed in Tabular View:  
Double-click on the object group. All objects that belong to the object group appear in Tabular View.  
Double-clicking on an object that does not contain other objects (children) displays the Properties window for the object instead of its children.
- To sort the objects in Tabular View by a specific property:

Click on the appropriate property column heading. To reverse the sort order, click on the column heading again.

- To resize a grid column:  
Place the pointer over the line that divides the column headings, then press and hold the mouse button to drag the column divider to the desired position.
- To resize the left pane (tree) and right pane (Tabular View):  
Place the pointer over the vertical splitter, then press and hold the mouse button to drag the splitter to the desired position.

## Selecting objects

You can select Tabular View objects in most VEA windows using the following procedures:

- To select a single object:  
Click on the object.
- To select multiple objects:  
Hold down the Control key while selecting the objects. The objects that you select in this way do not have to be adjacent.
- To select a range of adjacent objects:  
Select the first object, then hold down the Shift key while selecting the last object in the range. You can also select multiple adjacent objects by pressing and holding the mouse button while dragging the pointer over the desired objects.

## Navigational view

Navigational View supports object browsing and operations on those objects in a tree structure. The following nodes typically appear in this view:

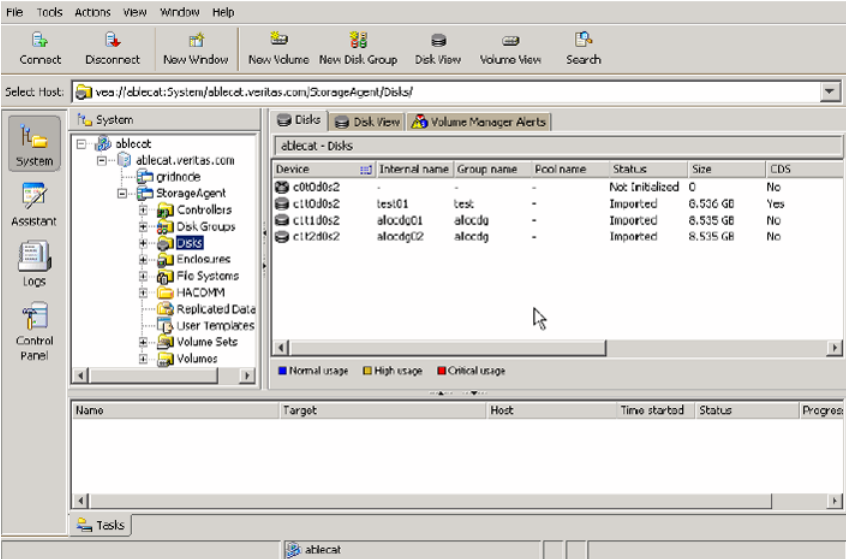
- System nodes: representing the connected and disconnected computer systems, these are distinguished by icons.
- Network nodes: listing the systems that are currently running on the given domain.
- History nodes: listing the most recently connected servers.
- Favorite Hosts nodes: listing hosts that will be connected by default at start up.

The system objects are arranged in containers called group nodes. Group nodes can contain homogenous or heterogeneous types of objects. You can view detailed information about these objects in the Details View by selecting the object in the Navigational View.

## Details view

The Details View (Figure 2-1) gives a tabular representation of the objects in a particular group node, or even a single object, depending upon the selection in the Navigational View.

Figure 2-1 Details view



## Console view

The Console View displays the active events and alerts for the connected hosts. Click on Console to display the events that have been received by the client during the user session. The events for all hosts over the lifetime of the session is displayed.

---

**Note:** Events on the server side are recorded on the server.

---

## Tasks view

The Tasks View displays the start time of the task along with the object name for which the task was fired.

You view the Task Log to obtain historical task information.

See “Viewing the task log ” on page 39.

## Properties of an object

Each property has the following attributes shown on [Table 2-1](#):

**Table 2-1** Property attributes

| Property type | Definition  |
|---------------|---|
| Type          | Defines the property value; for example, boolean, integer with varied size, and string.     |
| Flags         | Determines one of the characteristics of the property (for example, Hidden or Displayable). |
| Name          | Identification given to the property.   |
| Value         | Value assigned to property, depending upon the type.  |

A property set is a collection of properties. It can contain an array of properties or even another property set as its element. A property set with one or more property sets contained within it is called a recursive property set.

VEA uses Tabular View to display the properties of an object. Each object is represented by a row in the table and the properties are the column cells in it.

## Performing tasks

Most VEA tasks are performed by selecting objects and/or tasks and then completing the resulting dialog boxes. You can run tasks from the following:

- Action Menu
- Context-sensitive popup menu
- Toolbar
- VEA Task Assistant

## Running tasks from the menu bar

Once you have connected to a host, you can launch tasks from the Actions menu in the main window menu bar. The context-sensitive Actions menu launches tasks on a selected object. The Actions menu is dynamic and changes its options based on the type of object that is selected in the tree or grid.

To perform a task on an object with the Actions menu, select the object and choose the appropriate task from the Actions menu. If this launches a dialog box or wizard, complete the dialog box (or wizard).

## Running tasks from a popup menu

Once you have connected to a host, you can use a context-sensitive popup menu to launch a task on the selected object. A popup menu provides access to tasks or options appropriate for the selected object. Popup menus are available in the main window and most other windows.

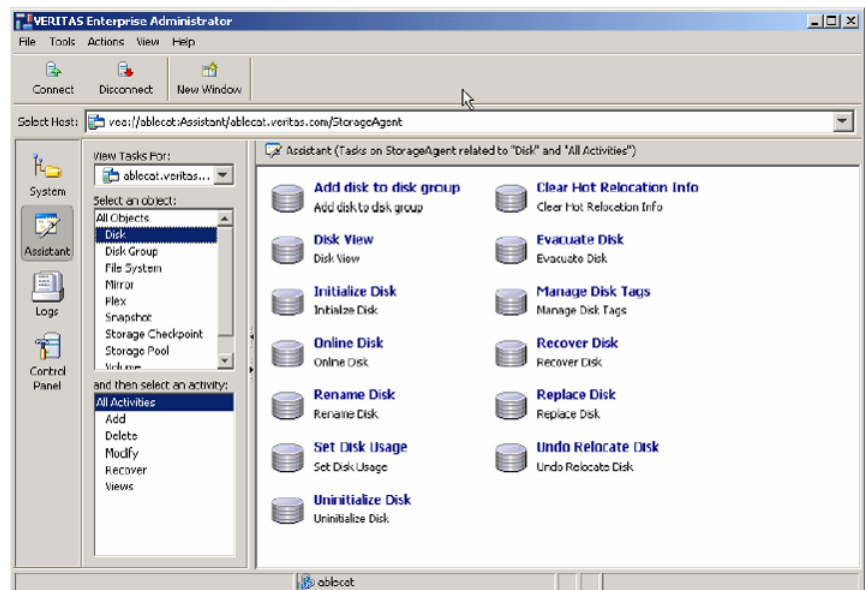
### To perform a task on an object with the popup menu

- ◆ Right-click on the object and choose the appropriate task in the popup menu. If this launches a dialog box or wizard, complete the dialog box (or wizard).

## Running tasks from the task assistant

Once you have connected to a host, you can use the VEA Task Assistant to launch a task on a selected object and activity, as shown in [Figure 2-2](#).

Figure 2-2 VEA task assistant



## Connecting and disconnecting hosts and domains

The system host typically has multiple Symantec products installed on it. To be able to use the products, client console needs to connect to the system through an authentication channel.

VEA can access and display multiple host machines simultaneously.

- [Connecting to a host or domain](#)
- [Logon authentication](#)
- [Disconnecting from a host](#)
- [Switching between connected hosts](#)

## Connecting to a host or domain

You can first connect to a system host by:

- Using the VEA Assistant
- Clicking on **File > Connect**
- Clicking on the Connect tool bar icon

The Connect dialog box is then displayed. You can now:

- Click Browse, to select a Favorite host
- Supply the data in the following fields and then click **OK**:  
Hostname—  
Select from the drop-down list; or type the name, IP address, or qualified domain name for Server host.
- Check one of the following:
  - Connect Using:  
Displays the default user account, if one has been set.
  - Connect using a different user account

---

**Note:** The login credentials for the host are identical to the Server host root credentials, `root` and its password. See your system administrator for more information.

---

- Supply the password when prompted. Type the password for the root account on the Server. Select the **Remember Password** box to save the password on your computer.  
You are now connected to your host.

---

**Note:** Entries for the user name and password must exist in the password file or corresponding Network Information Name Service (NIS) table on the machine to be administered.

---

## Logon authentication

There are three authentication mechanisms by which a connection can be established with the server.

- **Silent Logon (Windows platforms only):** This happens when the server is local; that is, the VEA client and server both are running on the same machine. If the user has logged on with administrator privileges, then username and password are not required. (The basic connection dialog box is used.)
- **Native Logon:** Username and password are required to authenticate the user. (The expanded connection dialog box is used.)
- **DCOM authentication (Windows platforms only):** If the user has logged in as administrator on the domain, then username and password are not required to authenticate the user (the basic connection box is expanded after entering the server name and clicking OK), and the user is connected to the server. The server needs to be started with administrator privileges for this type of authentication.  
If the user does not have administrator privileges, then the connection takes place using the Native Logon mechanism.

## Disconnecting from a host

The Disconnect procedure disconnects a host machine from the current VEA session. When a host machine is disconnected, VEA cannot administer that machine until a new connection is made.

If the connection is lost for any other reason, a message appears that indicates the connection has been terminated, and the icon for that computer is removed from the left tree view. Click **OK** to close the message box.

To restore access to a disconnected host machine, you must reconnect to the host.

### To disconnect from a host

- 1 Right-click the computer icon to be disconnected.
- 2 Select **Disconnect** from the file menu on the menu bar.
- 3 A confirmation dialog will appear, click **Yes** to end the remote connection.
- 4 The computer icon disappears from the left tree view.

## Switching between connected hosts

You can switch the VEA console display between connected hosts:

- Select **View > Connection**.

- Select the host to be displayed from the list of connected hosts displayed. The display changes to show information for the selected host.

## Exiting the Veritas Enterprise Administrator client

To exit the VEA client, choose **File > Exit**.

It is also possible to close the client by using the close button available at the top right of the window.

## Viewing different products

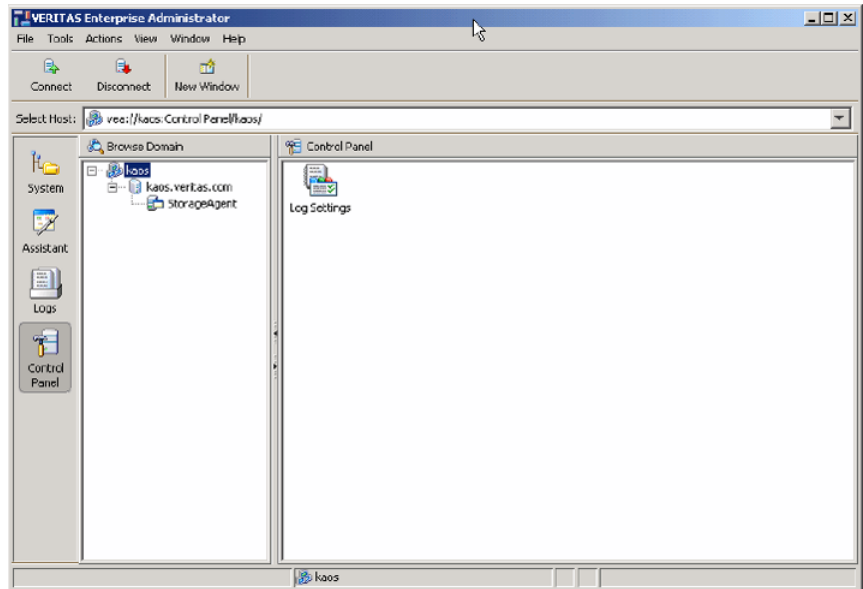
VEA allows you to simultaneously access several products on different systems, and to view each product in the language of the VEA client, if available.

For example, if you connect from a VEA client, displaying French text, to Veritas Volume Manager running on a remote Solaris system also displaying French, you will see French text in the VEA client window. If you now connect the same VEA client (displaying French text) to SAN Appliance running on a remote Linux system, displaying English text then, if the SAN Appliance is available in French, the VEA client displays everything in French. If the SAN Appliance is available only in English, then the SAN Appliance information will be displayed in English on the VEA client.

## Using the control panel

Use the Control Panel to view and modify application settings. Selecting the Control Panel will bring up the Control Panel view in the right hand pane.

[Figure 2-3](#) shows the control panel.

**Figure 2-3** Control panel

## Viewing the alert log

The alert log resides on the server, and records information such as alerts raised, about the server.

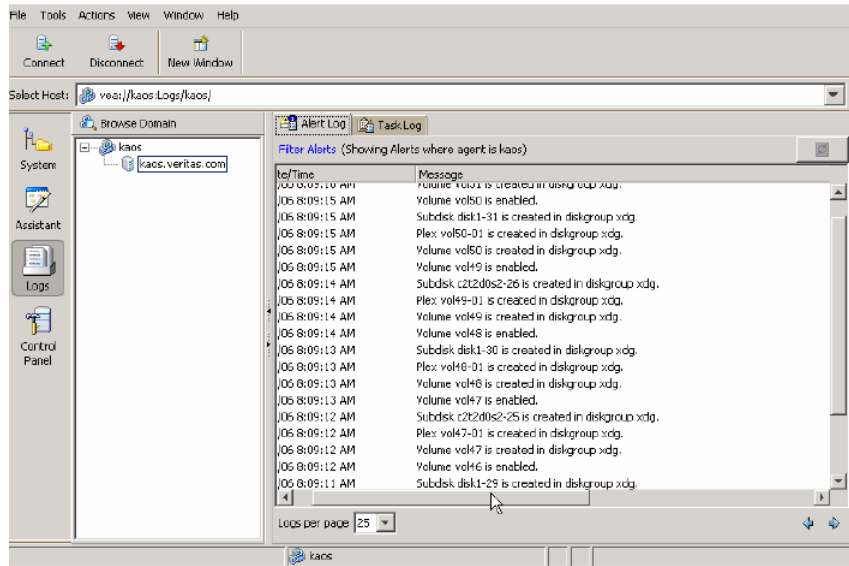
After connecting to the host (server), you can display a snapshot of the log information by clicking on Logs then the Alert Log tab.

The server can have single or multiple alert log files, depending upon the policy. If the server has more than one alert log file, then a drop down box is displayed from which you select the required log file.

The alert information is displayed in the Details View. Up to 25 alerts can be displayed in a set.

[Figure 2-4](#) shows the alert log.

Figure 2-4 Alert log



## Previous and next alert sets

The Previous and Next set of alerts buttons are situated below the Details View.

You can display the next set of alerts by clicking the Next set of Alerts button. The current set of alerts is then replaced with the next set of alerts. If there are no more alerts in the event log, the current set continues to be shown.

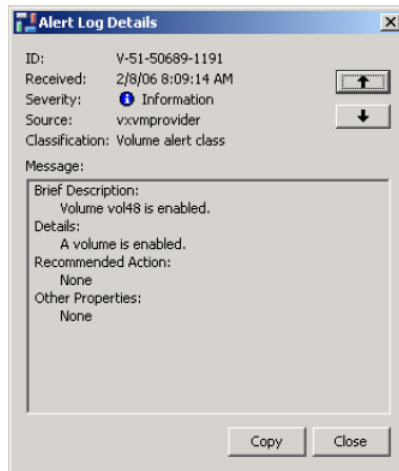
You can display the previous set of alerts by clicking the Previous set of Alerts button. The current set of alerts is then replaced with the previous set of alerts. When the first set is reached, and there are no more old alerts, the Previous set of Alerts button is disabled.

## Viewing alert details

You can view the details for particular alert by selecting the alert and double-clicking on the alert. A new window opens up to show the alert details.

Figure 2-5 shows the alert log details window.

Figure 2-5 Alert details



## Viewing the task log

The task log resides on the server, and is similar to the event log; but records information about task objects. You can display a snapshot of the task log information on the client.

After connecting to the host (server), you display the task log of the server by selecting the "TaskLog" node under "Logs" in the tree view. The server can have single or multiple task log files, depending upon the policy. If the server has more than one task log file, then a drop down box is displayed from which you select the required log file.

The client gets the latest set of tasks from the log file of the server and displays the information in the Details View. Up to 25 tasks can be displayed in a set.

## Previous and next task sets

The Previous and Next set of tasks buttons are situated below the Details View.

You can display the next set of tasks by clicking the Next set of Tasks button. The current set of tasks is then replaced with the next set of tasks. If there are no more tasks in the task log, the current set continues to be shown.

You can display the previous set of tasks by clicking the Previous set of Tasks button. The current set of tasks is then replaced with the previous set of tasks. When the first set is reached, and there are no more old tasks, the Previous set of Tasks button is disabled.

## Task details

You can view the details for particular task. Select the task and click on “Details.” A new window opens up to show the task details.

## Configuring logs

You can configure the server task and alert logs from the client.

### To configure the logs

- 1 Select the “control panel” node in the tree view. The details view appears, listing all the configuration applications.
- 2 Launch the “Log Settings” configuration application by double clicking on it.  
You can set the maximum log size from 10KB to 2MB. The default log size is 500KB.

## Printing views

You can print some of the Views in the right pane by clicking File >Print.

Print functionality is determined by the server, which means that the Print and Page Setup functions appear only when the VEA installed on the server supports printing. This also means that Page Setup may be shown as disabled, even when the Print function is available.

The complete View is printed, including any information which may be scrolled off the screen. If there is more than one tab for the displayed View, then only information relevant to the displayed tab is printed.

## Managing user profiles

The user profile feature enables individual users running VEA on the same machine to maintain their own preferences, connection history and favorites information.

To use the user profile feature, select Tools > Manage Profiles. The Manage Profiles dialog appears.

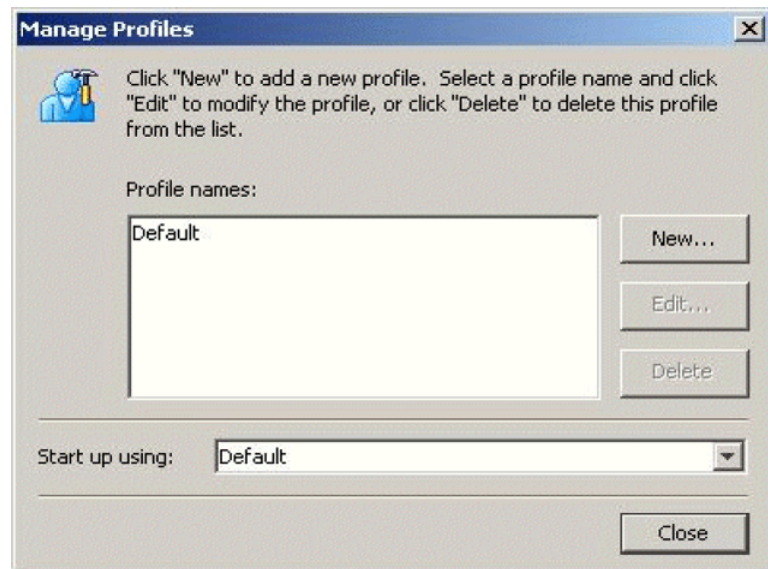
The Manage Profiles dialog allows you to do the following actions:

- Set a profile to be used when starting VEA  
See [“Selecting a startup profile”](#) on page 41.
- Create a new profile  
See [“Creating a new profile”](#) on page 41.

- Change your password  
See “[Changing your password](#)” on page 42.
- Delete a profile  
See “[Deleting a profile](#)” on page 42.

Figure 2-6 shows the Manage Profiles window.

Figure 2-6 User profiles



## Selecting a startup profile

A default startup profile (Default) is created by VEA when it is invoked by the first time. The Default profile is particularly useful when VEA is being used in a single user environment, in which case, you can use the Default profile rather than creating additional profiles.

You cannot delete or modify the Default profile, and it is not password protected.

You also have the option of selecting your own startup profile (in Startup using:). Alternatively, you can choose to be asked at each logon, which profile to use.

## Creating a new profile

Select the New button to create a new profile. This brings up the New Profile dialog.

You then enter the desired name for the profile. The following characters are not allowed in the profile name:

```
" ~!@#%&*()=+-[]{}\\|'\";:.,<>/?'"
```

You can also choose to employ a password.

---

**Note:** You must remember this password, for there is no way of retrieving a lost password, and the profile cannot then be deleted at a later stage. A blank password or a password consisting of spaces alone will not be considered for a password, and the profile will be marked as not having a password.

---

## Changing your password

Select the profile, and then click Edit to change the password for the profile. This brings up the Edit Profile dialog.

You will need to know the current password in order to change your password.

## Deleting a profile

Select the profile, and then click Delete to delete a profile. You are then prompted to confirm the deletion of the profile.

If the selected profile is password protected, you are then prompted to enter the password.

## Firewall support

In VEA, the client connects to the server using a specific port number: 2148. In order to connect to the server through a firewall, a port on the firewall is mapped to the 2148 port of the VEA server.

When the client wishes to connect to the server through the firewall, it needs to specify the host and port in the following format.

```
Firewallhost:port
```

where:

*Firewallhost* is the name or IP address of the firewall.

*port* is the port on the firewall that is internally mapped to the VEA server.

When the client connects to the server, the VEA client displays the host name (server name) that it connected to, and not the firewall-port combination in the

list of connected hosts. The host name is also displayed in the history and favorites nodes. The firewall and port information is stored in the user profile (wallet) and is used for subsequent connections to the same server. The firewall-port combination is displayed only in the connection dialog.

## Example 1

If `a.b.c.d` is a firewall machine, then:

Port 1234 on `a.b.c.d` = 2148 on `veaserver1`, and

Port 3456 on `a.b.c.d` = 2148 on `veaserver2`

...

and so on.

Now, if the client wishes to connect to `veaserver1` then, it should specify the following in the connection box:

```
a.b.c.d:1234
```

This then connects to `veaserver1` and displays `veaserver1` in the connected hosts, history and favorites databases. The firewall:port combination is stored in the wallet for subsequent connection to the server if requested by the user.

## Example 2

You have the following connection routes:

```
client ---> Internet ---> firewall ---> server
```

and

```
client ---> firewall ---> server
```

You must do the following:

#### To connect

- 1 Allow for an alias of port 2148 on server A to be a particular port on the firewall machine.
- 2 Let Pf be the port on the firewall machine F which is an alias for port 2148 on server A.
- 3 Connect using the GUI to port Pf on F. You are actually managing server A  
VEA uses Anonymous Deffie Hellman key exchange and is therefore vulnerable to the man-in-the-middle attack. Therefore it is recommended that SSH or some kind of tunnelling software be used if going across the internet. If SSH is used set up port forwarding from client to firewall port Pf and use SSH to tunnel.

## Example 3

For the case where 2148 is forwarded through the firewall (punch through):

#### To connect

- 1 Let machines A and B be the servers on the secure side of the firewall.
- 2 Let client be on the internet/intranet side  

```
client ---> firewall ---> A|B
```
- 3 Configure TCP/IP routing on the client such that packets destined for A|B are routed to firewall F.
- 4 Add A and B to `/etc/hosts` (or equivalent) for name resolution if required.
- 5 Connect to A or B or both machines (depending on which are to be managed).

# Accessibility

This chapter includes the following topics:

- [About accessibility](#)
- [Keyboard shortcuts](#)
- [Dialog boxes](#)

## About accessibility

Accessibility is enhanced by the use of:

- [Keyboard shortcuts](#)
- [Dialog boxes](#)

## Keyboard shortcuts

Keyboard shortcuts are possible using accelerators and mnemonics.

### About accelerators

Accelerators are key combinations that provide shortcut access to GUI functions. They allow you to use a computer from the keyboard, rather than using the mouse. Accelerators are sometimes a quicker way of getting to a command, especially for the experienced user or a user who is disabled and is unable to manipulate a mouse or to press more than one key at the same time. Accelerator keys are either a single keystroke or two or more keystrokes that can be pressed in succession (rather than holding them simultaneously). Some users are unable to use a mouse, and some users prefer to use the keyboard rather than a mouse.

## About mnemonics

Mnemonics are single key strokes, used to activate components such as menu items. A single mnemonic is equivalent to a mouse click. A mnemonic can be used to select a menu item by pressing the Alt key to go into menu pull-down mode, pressing a single key to open a menu and another key to select a menu item. For example:

- <Alt> to go into menu pull-down mode
- <f> key to access the File menu
- <o> to activate the “open” command

Mnemonics are case insensitive. Keys can be pressed sequentially instead of simultaneously.

## Keyboard mapping conventions

Exceptions and additions to the Microsoft Keyboard Conventions are listed in:

- [Veritas Enterprise Administrator exceptions to Microsoft keyboard conventions](#)
- [Veritas Enterprise Administrator additions to Microsoft keyboard conventions](#)
- [Veritas Enterprise Administrator help additions to Microsoft keyboard conventions](#)

### Veritas Enterprise Administrator exceptions to Microsoft keyboard conventions

**Table 3-1** summarizes the keyboard differences between the VEA implementation of mnemonics and accelerators, and the Microsoft keyboard convention:

**Table 3-1** VEA exceptions to Microsoft keyboard conventions

| Convention | Mnemonic | Accelerator   |
|------------|----------|---------------|
| Cancel     | C        | Alt C, Escape |
| OK         | O        | Alt O         |
| Refresh    | E        | None          |
| Yes        | None     | None          |
| No         | None     | Escape        |
| Shift+F10  | A        | Alt A         |

## Veritas Enterprise Administrator additions to Microsoft keyboard conventions

**Table 3-2** summarizes the keyboard additions to the Microsoft keyboard conventions in the VEA implementation of mnemonics and accelerators:

**Table 3-2** VEA additions to Microsoft keyboard conventions

| Convention                            | Mnemonic | Accelerator  |
|---------------------------------------|----------|--|
| Actions                               | A        | Alt A. Use this accelerator in place of Shift+F10 with a selected item to bring up the context menu with the Actions menu. |
| Add category                          | A        | None   |
| Add                                   | D        | Alt D  |
| Connect                               | C        | None   |
| Contents                              | C        | None   |
| Delete Now                            | None     | None   |
| Delete Temporary files on Exit        | E        | Alt E  |
| Disconnect                            | D        | None   |
| Number of items in history            | N        | Alt N  |
| Password                              | P        | Alt P  |
| Previous                              | P        | Alt P  |
| Overwrite the log file                | W        | Alt W  |
| Overwrite the log file (s) after      | A        | Alt A  |
| Overwrite the log file (s) older than | O        | Alt O  |
| Remove                                | E        | Alt E  |
| Rescan                                | S        | None   |
| Reset                                 | R        | Alt R  |

**Table 3-2** VEA additions to Microsoft keyboard conventions (*continued*)

| Convention        | Mnemonic | Accelerator |
|-------------------|----------|-------------|
| Set to Defaults   | S        | Alt S       |
| Remember Password | R        | Alt R       |
| Username          | U        | Alt U       |

## Veritas Enterprise Administrator help additions to Microsoft keyboard conventions

[Table 3-3](#) summarizes the keyboard additions to the Microsoft keyboard conventions in the VEA implementation of mnemonics and accelerators:

**Table 3-3** VEA and applications help additions to Microsoft keyboard conventions

| Convention           | Mnemonic | Accelerator |
|----------------------|----------|-------------|
| Find in Topic...     | F        | Ctrl + F    |
| Find Next            | N        | F3          |
| Find Previous        | P        | None        |
| Hide Navigation Tabs | H        | None        |
| Index                | I        | None        |
| Print                | P        | None        |
| Search               | S        | None        |
| Synchronize          | N        | None        |

## Dialog boxes

Dialog boxes often contain groups of controls necessary to set options or settings for programs.

You can select or choose controls that have an underlined letter in their titles by typing Alt plus the underlined letter at any time when the dialog box is active. Tab moves the keyboard focus between controls, but which controls are included in the focus sequence, and the order of the sequence, may vary between

applications. Typically, items that cannot be changed are not visited by the Tab key. Arrow keys are used to move within a list box, groups of option controls, or groups of page tabs. Arrow keys can move the keyboard focus between other controls but this behavior is not reliable. Options that are unavailable appear dimmed and cannot be selected.

While the controls described here are typically found on dialog boxes, they also can occur in other contexts.

Command buttons, such as the OK button, carry out the command using the information supplied in the dialog box. Other command buttons let you cancel the command or choose from additional options.

Command buttons marked with an ellipsis (...) open another dialog box so you can provide more information or confirm an action.

A dark border initially indicates the default button. Press Enter at any time to choose the button with a dark border. Use Tab to move the keyboard focus to the next control, and add Shift to reverse the direction. When you move the keyboard focus to a command button it temporarily takes the dark border, but when the keyboard focus is not on a command button the dark border returns to the default button. Press spacebar to choose the command button you selected with Tab. Use Esc to immediately choose the Cancel button if there is one. Typing the access key for a command button will immediately carry out the command.

Check boxes Use Tab to move between boxes, and spacebar to change the check box to the next state. Typing the access key for a check box also will move the focus to the box and change its state.

Option controls (also known as radio buttons) are used to select only one option from a group of options. As with check boxes, option buttons may represent two or three states. In some applications, you can add Ctrl to move to the button without selecting it, then use spacebar to choose the currently selected option button. Typing the access key for an option control will also move the focus to the control and select it.

Tabbed pages are used to fit many options into a single dialog box. They appear visually similar to dividers from a notebook. Each page contains separate groups of controls such as check boxes or option controls. Use Tab to move the focus to the tab for the currently visible page. Typing the access key for a page tab also will move the focus to the tab and display its page.

[Table 3-4](#) summarizes the actions for the keys in tabbed pages:

**Table 3-4**      Tabbed pages

| Keys                       | Action  |
|----------------------------|---|
| Ctrl+Page down or Ctrl+Tab | Switches to the next tab and displays the page.   |
| Ctrl+Page up               | Switches to the previous tab and displays the page.   |
| down arrow or up arrow     | Chooses the tab in the next or previous row and displays the page.  |
| right arrow or left arrow  | When the focus is on a tab selector, chooses the next or previous tab in the current row and displays the page. |

Sliders appear as an indicator on a vertical or horizontal gauge. The slider both displays and sets a value from a continuous range, such as speed, brightness, or volume. Use Tab or the appropriate access key to move the focus to the slider.

Spin boxes appear as a text box with up and down arrows used to select from a list of fixed values. Use Tab to move the keyboard focus to the text box, then enter a valid value in the box or use the up arrow or down arrow keys to select the next higher or lower values.

List boxes display a column of available choices. If there are more choices than can fit in the open list box, moving the selection through the list will scroll more choices into view. Use Tab or type the appropriate access key to move the focus to the list box.

Single selection list boxes allow only one item to be selected from the list at a time. Use the up arrow or down arrow keys to select items. Moving to a second item will automatically deselect all other items.

Drop-down list boxes by default show only the selected item. There is a small button to the right of the control that shows a downward-pointing arrow. You can click the arrow to display more items from the list. You also can show or hide the list using Alt+down arrow, Alt+up arrow, or F4. In all other respects it behaves like a normal single-selection list box.

Extended selection list boxes support selecting single items, blocks of items, or combinations of the two. After selecting an item as in a single-selection list box, hold down Shift+Navigation keys to select or deselect more items.

Multiple selection list boxes typically have comparatively long lists and more of these items are expected to be chosen individually (not in blocks). Navigating to items does not automatically select them nor does selecting an item change the status of other selections. Press spacebar to select or deselect an item.

Combo-boxes and drop-down combo boxes are list boxes with attached edit boxes. You can make your selection by either typing in the edit box or using the standard commands to select from the list.

[Table 3-5](#) summarizes the actions for keys in combo boxes:

**Table 3-5** Combo boxes and drop-down combo boxes

| Keys                   | Action  |
|------------------------|---|
| up arrow or down arrow | Selects the previous or next item. In an extended selection list box, add Shift to select additional items and add Ctrl to move to an item without selecting it. In a multiple selection list box, moves without changing the selection.      |
| Page up or Page down   | Selects the item up or down one screen. In an extended selection list box, add Shift to select additional items and add Ctrl to move to an item without selecting it. In a multiple selection list box, moves without changing the selection. |

Edit controls are rectangular boxes used for displaying or editing text. Use Tab or the appropriate access key to move the focus to the edit control and select the text.



# Glossary

|                                   |   |
|-----------------------------------|---|
| <b>alert</b>                      | An indication that an error or failure has occurred on an object on the system. When an object fails or experiences an error, an alert icon appears.  |
| <b>alert icon</b>                 | An icon that indicates that an error or failure has occurred on an object on the system. Alert icons usually appear in the status area of the main window and on the group icon of the affected object.   |
| <b>Alert Monitor</b>              | A window that provides information about objects that have failed or experienced errors.  |
| <b>command log</b>                | A log file that contains a history of Veritas Volume Manager (VxVM) tasks performed in the current session and previous sessions. Each task is listed with the task originator, the start/finish times, the task status, and the low-level commands used to perform the task.   |
| <b>Device Discovery Layer</b>     | See DDL.  |
| <b>disk group</b>                 | A set of disks that are under VxVM control and share a common configuration. A disk group configuration is a set of records containing detailed information on existing Veritas Volume Manager objects (such as disk and volume attributes) and their relationships. Each disk group has an administrator-assigned name. Volumes can only be created on disks that belong to disk groups. |
| <b>DMP (Dynamic Multipathing)</b> | The Veritas Volume Manager Dynamic Multipathing facility.   |
| <b>FastResync</b>                 | A VxVM feature for fast resynchronizing of stale mirrors at the time of reattach which were earlier split off as a result of snapshot or detach operation.  |
| <b>grid</b>                       | A tabular display of objects and their properties. The grid lists Veritas Volume Manager objects, disks, controllers, or file systems. The grid displays objects that belong to the group icon that is currently selected in the object tree. The grid is dynamic and constantly updates its contents to reflect changes to objects.  |
| <b>group icon</b>                 | The icon that represents a specific object group.   |
| <b>LUN (Logical Unit Number)</b>  | Each disk in an array has a LUN. Disk partitions may also be assigned a LUN.  |
| <b>main window</b>                | The main Veritas Volume Manager window. This window contains a tree and grid that display volumes, disks, and other objects on the system. The main window also has a menu bar and a toolbar.   |

|                                      |   |
|--------------------------------------|---|
| <b>menu</b>                          | A list of options or tasks. A menu item is selected by pointing to the item and clicking the mouse.   |
| <b>menu bar</b>                      | A bar that contains a set of menus for the current window. The menu bar is typically placed across the top of a window.   |
| <b>Object View Window</b>            | A window that displays a graphical view of the volumes, disks, and other objects in a particular disk group. The objects displayed in this window are automatically updated when object properties change. This window can display detailed or basic information about volumes and disks. |
| <b>popup menu</b>                    | A context-sensitive menu that only appears when you click on a specific object or area.   |
| <b>rules</b>                         | Rules specify the storage allocation criteria. These define storage selection and storage layout. Rules are simple sentences written in the ISP language.   |
| <b>task request monitor</b>          | A window that displays a history of tasks performed in the current Veritas Volume Manager session. Each task is listed with the task originator, the task status, and the start/ finish times for the task.   |
| <b>tree</b>                          | A dynamic hierarchical display of objects on the system. Each node in the tree represents a group of objects of the same type.  |
| <b>uninitialized disks</b>           | Disks that are not under VxVM control.  |
| <b>user templates</b>                | User templates are a collection of capabilities, templates and rules defined by the user to simplify tasks. You can group the capabilities you want the volume to have, and save these capabilities along with the rules as a user template.  |
| <b>Volume Layout Details Window</b>  | A window that displays a graphical view of a volume and its components. The objects displayed in this window are not automatically updated when the volume properties change.   |
| <b>Volume to Disk Mapping Window</b> | A window that displays a tabular view of volumes and their underlying disks. This window can also display details such as the subdisks and gaps on each disk.   |

# Index

## A

- accelerators 45
- accessibility 45
- accessing tasks 32
- Actions menu 16
- add a host 26
- advanced preferences
  - setting 27
- alert logs 37
- alerts
  - icons 17

## C

- client 22
- configuring logs 40
- connection preferences 26
- control panel 36

## D

- DCOM authentication 35
- details view 31
- dialog boxes
  - accessibility 46
- disconnecting from a remote computer 35
- displaying
  - object properties 29
  - objects 29

## E

- editing keys 46

## F

- Favorites 26
- File menu 16, 32

## G

- grid
  - defined 15-16

## H

- help 17
- Help menu 17
- hosts
  - accessing multiple hosts 12
  - defined 15

## K

- keyboard
  - mapping 46
- keys
  - editing 46

## L

- Log Policies 41
- logs
  - alert 37
  - configuring 40
  - task 39

## M

- main window
  - description of 14
  - status area 17
- making multiple selections 18
- mapping
  - keyboard 46
- menus
  - context-sensitive 33
  - File 32
  - Help 17
  - Options 16
  - popup 33
  - preferences 16
  - running tasks from 32
  - Selected 32
  - types of 16
  - window 16
- mnemonics 46

- monitoring
  - alerts 17
- multiple host support 12

## N

- Native Logon 35
- navigational view 30

## O

- object properties 32
- object tree 15
- objects
  - displaying 29
  - selecting 30
  - sorting 30
  - viewing 29
- Options menu 16

## P

- perspective 27
- popup menus 33
- preferences
  - connection 26
  - Options menu 16
  - setting 16
- Previous/Next Alerts 38–39
- printing views 40
- PropertySet 32

## R

- Reconnect at Logon 26
- remote administration 12
- Remove From Favorites 26
- rescan 16
- running tasks 32
- running tasks using Task Assistant 33

## S

- security 12, 22
- Selected menu 32
- selecting objects 18, 30
- selections
  - multiple 18
- server 22
- setting advanced preferences 27
- setting display properties 27
- setting the console view. 28

- setting up your system 22
- setting user accounts 29
- Silent Logon 35
- sorting objects 30
- splitter 16
- starting VEA 22
- status area 17
- switch display between connected hosts 35
- system
  - setup 22

## T

- task log 39
- tasks
  - accessing 32
  - from menus 32–33
  - properties 18
  - running 32
  - throttling 18
- tear off 17
- Toolbar 17
- toolbar 27
- Tools menu 16
- tree
  - object 15

## U

- user profiles 40

## V

- VEA
  - accessibility 45
  - starting 22
- VEA Console 11
  - description 11
- VEA task assistant 33
- View menu 16
- viewing objects
  - and object properties 29
- views
  - printing 40

## W

- window menu 16
- windows
  - main window 14
  - resizing 16