

APTARE IT Analytics Licensing Guide

Release 10.6

VERITAS™

APTARE IT Analytics Licensing Guide

Last updated: 2022-09-01

Legal Notice

Copyright © 2022 Veritas Technologies LLC. All rights reserved.

Veritas and the Veritas Logo are trademarks or registered trademarks of Veritas Technologies LLC or its affiliates in the U.S. and other countries. Other names may be trademarks of their respective owners.

This product may contain third-party software for which Veritas is required to provide attribution to the third party ("Third-party Programs"). Some of the Third-party Programs are available under open source or free software licenses. The License Agreement accompanying the Software does not alter any rights or obligations you may have under those open source or free software licenses. Refer to the Third-party Legal Notices document accompanying this Veritas product or available at:

<https://www.veritas.com/about/legal/license-agreements>

The product described in this document is distributed under licenses restricting its use, copying, distribution, and decompilation/reverse engineering. No part of this document may be reproduced in any form by any means without prior written authorization of Veritas Technologies LLC and its licensors, if any.

THE DOCUMENTATION IS PROVIDED "AS IS" AND ALL EXPRESS OR IMPLIED CONDITIONS, REPRESENTATIONS AND WARRANTIES, INCLUDING ANY IMPLIED WARRANTY OF MERCHANTABILITY, FITNESS FOR A PARTICULAR PURPOSE OR NON-INFRINGEMENT, ARE DISCLAIMED, EXCEPT TO THE EXTENT THAT SUCH DISCLAIMERS ARE HELD TO BE LEGALLY INVALID. VERITAS TECHNOLOGIES LLC SHALL NOT BE LIABLE FOR INCIDENTAL OR CONSEQUENTIAL DAMAGES IN CONNECTION WITH THE FURNISHING, PERFORMANCE, OR USE OF THIS DOCUMENTATION. THE INFORMATION CONTAINED IN THIS DOCUMENTATION IS SUBJECT TO CHANGE WITHOUT NOTICE.

The Licensed Software and Documentation are deemed to be commercial computer software as defined in FAR 12.212 and subject to restricted rights as defined in FAR Section 52.227-19 "Commercial Computer Software - Restricted Rights" and DFARS 227.7202, et seq. "Commercial Computer Software and Commercial Computer Software Documentation," as applicable, and any successor regulations, whether delivered by Veritas as on premises or hosted services. Any use, modification, reproduction release, performance, display or disclosure of the Licensed Software and Documentation by the U.S. Government shall be solely in accordance with the terms of this Agreement.

Veritas Technologies LLC
2625 Augustine Drive.
Santa Clara, CA 95054

<http://www.veritas.com>

Technical Support

Technical Support maintains support centers globally. All support services will be delivered in accordance with your support agreement and the then-current enterprise technical support policies. For information about our support offerings and how to contact Technical Support, visit our website:

<https://www.veritas.com/support>

You can manage your Veritas account information at the following URL:

<https://my.veritas.com>

If you have questions regarding an existing support agreement, please email the support agreement administration team for your region as follows:

Worldwide (except Japan)

CustomerCare@veritas.com

Japan

CustomerCare_Japan@veritas.com

Documentation

Make sure that you have the current version of the documentation. Each document displays the date of the last update on page 2. The latest documentation is available on the Veritas website.

Veritas Services and Operations Readiness Tools (SORT)

Veritas Services and Operations Readiness Tools (SORT) is a website that provides information and tools to automate and simplify certain time-consuming administrative tasks. Depending on the product, SORT helps you prepare for installations and upgrades, identify risks in your datacenters, and improve operational efficiency. To see what services and tools SORT provides for your product, see the data sheet:

https://sort.veritas.com/data/support/SORT_Data_Sheet.pdf

Contents

Chapter 1	License installation and guidelines	6
	License overview	7
	License Editions	7
	Understanding licensing restrictions	9
	Get the APTARE IT Analytics license key file	11
	Install a license	12
	Verify the current license configuration	13
	Run the License Summary report	14
	Help About	14
	View License Details	15
	Consumption criteria of license suites	15
	Storage suite	15
	Capacity Manager	16
	Fabric Manager	17
	Protection suite	17
	Backup Manager	17
	Virtualization Manager	21
	Complete suite	21
	File Analytics	21
	Managing licenses	21
	Managing objects collected from centralized systems	21
	Managing directly probed enterprise objects	22
	What happens to historical data?	22
	Processes to manage license counts	23
	Identify counted and excluded objects	23
	Stack multiple licenses	23
	Add license with higher entitlement	24
	Change the license edition	24
	View the current license	25
	Delete clients	25
	Expand your license configuration	25
	Exclude objects from future data collections	25
	Configure the Data Collector policy to exclude the object	26
	Example of configuring a Data Collector policy to exclude arrays	26
	Add objects to the Object Exclusion Database table	28

	Removing objects from the license count	29
	Deleting objects using the Inventory List view	31
Chapter 2	License management from command line	32
	Overview	32
	Install a license on Microsoft Windows Portal platform	32
	Install a license on Linux Portal platform	33
	Verify the current license configuration	34
	Run report configuration utility	34
	Run license verification utility	35
	Removing a Portal license	36
Chapter 3	Troubleshooting	38
	License install fails with 'License is already issued for another host' error	38

License installation and guidelines

This chapter includes the following topics:

- [License overview](#)
- [Understanding licensing restrictions](#)
- [Get the APTARE IT Analytics license key file](#)
- [Install a license](#)
- [Verify the current license configuration](#)
- [Consumption criteria of license suites](#)
- [Storage suite](#)
- [Protection suite](#)
- [Complete suite](#)
- [Managing licenses](#)
- [View the current license](#)
- [Delete clients](#)
- [Expand your license configuration](#)
- [Exclude objects from future data collections](#)
- [Configure the Data Collector policy to exclude the object](#)
- [Removing objects from the license count](#)

- [Deleting objects using the Inventory List view](#)

License overview

A valid license is required to run the APTARE IT Analytics application.

If you have not received your license file, see [Get the APTARE IT Analytics license key file](#)

The available APTARE IT Analytics license suites and their respective inclusions as follows.

Table 1-1 APTARE IT Analytics License suites

License suites	Inclusions
Storage suite	<ul style="list-style-type: none">■ Capacity Manager■ Fabric Manager■ Virtualization Manager
Protection suite	<ul style="list-style-type: none">■ Backup Manager■ Virtualization Manager
Complete suite Note: Complete suite contains the license of File Analytics in addition to those included in both Storage and Protection suites.	<ul style="list-style-type: none">■ Capacity Manager■ Fabric Manager■ Virtualization Manager■ Backup Manager■ File Analytics

If you find that you have exceeded your license configuration, refer to:

- [Understanding licensing restrictions](#)
- [Verify the current license configuration](#)

License Editions

The editions of each license type are defined below:

- **Standard:** Allows licensing for APTARE IT Analytics Portal only if Oracle Standard edition is used and only a single Instance of the Portal is used in the enterprise.
- **Shared Services:** Allows licensing in Oracle shared services environment. You need to provide your own Oracle license (BYOO - Bring Your Own Oracle).
- **Partitioning:** Allows the underlying database to split large tables into partitions, thus improving the database performance and scalability. APTARE IT Analytics

leverages the Oracle enterprise Edition Database with the Oracle Partitioning option.

The supported License edition based on the License type of each license suite is as follows:

Table 1-2 Supported editions for each license suite

License Suite	License Type	Supported Edition
Storage Suite	Perpetual	Standard Standard DR Shared Services Shared Services DR Partitioning Partitioning DR
	Subscription	Standard Standard DR Shared Services Shared Services DR Partitioning Partitioning DR
Protection Suite	Perpetual	Standard Standard DR Shared Services Shared Services DR Partitioning Partitioning DR
	Subscription	Standard Standard DR Shared Services Shared Services DR Partitioning Partitioning DR

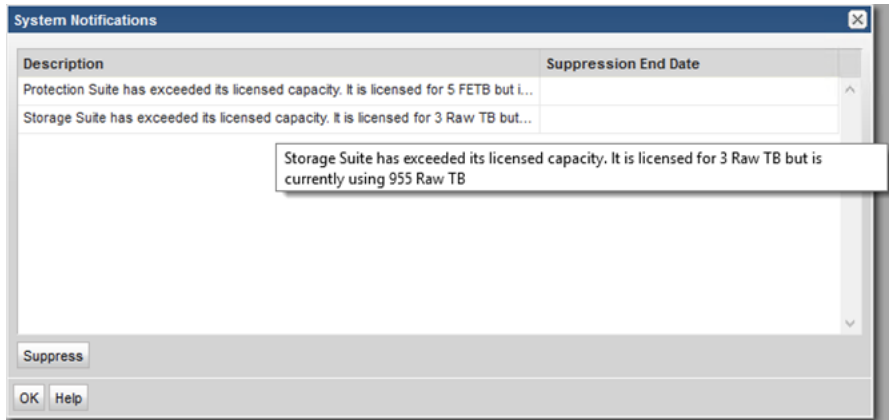
Table 1-2 Supported editions for each license suite (*continued*)

License Suite	License Type	Supported Edition
Complete suite	Evaluation	Standard
	Perpetual	Standard
		Standard DR
		Shared Services
		Shared Services DR
		Partitioning
	Partitioning DR	
	Subscription	Standard
		Standard DR
Shared Services		
Shared Services DR		
Partitioning		
Partitioning DR		

Note: A Disaster Recovery (DR) License is required if you deploy two or more copies of any product from the APTARE IT Analytics suite of softwares on a second or subsequent Portal server for the purpose of disaster recovery, availability, or fail-over from production. A DR License is required for each individual product that you license.

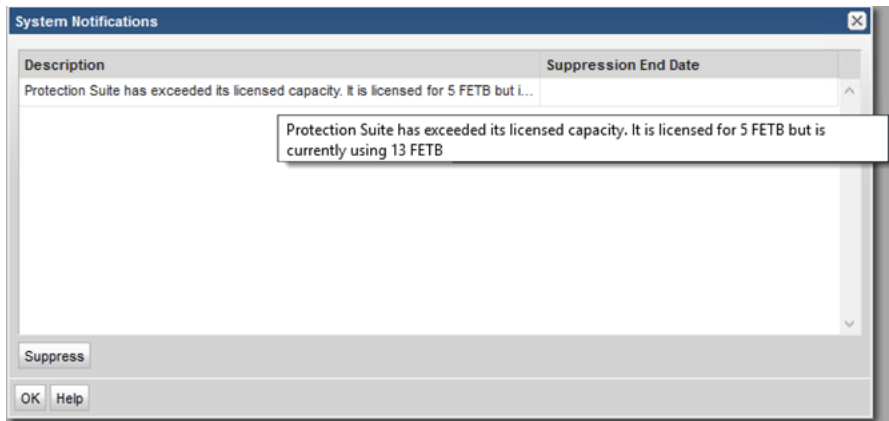
Understanding licensing restrictions

At login, the Portal may prompt with a message window similar to the following examples:



The above message is related to storage array capacity licensing. For specific definitions of these types of licenses refer to the following section.

See [“Consumption criteria of license suites”](#) on page 15.



This message indicates that the total number of Backup Units in your database has exceeded the number for which you are licensed. A Backup Unit is defined as any client, server, media server, master server--that is, any host in your backup infrastructure for which reporting data is collected.

A number of factors are considered when determining client licensing compliance, as described in the following section.

See [“Consumption criteria of license suites”](#) on page 15.

When you reach the object license limit, any additional objects will not be added to the reporting database. They, however, will be noted in an exception table. Refer to the following section for tools to identify excluded objects.

See “[Managing licenses](#)” on page 21.

Get the APTARE IT Analytics license key file

A valid license file is required to run the Portal application. If you already have a license file, proceed to the Installation section.

To generate a license key:

- 1 Open the Veritas support portal.
(https://www.veritas.com/content/support/en_US/)
- 2 Click **Licensing** and login to the Veritas Entitlement Management System using your Administrator credentials.
- 3 Open the **Entitlements** tab and use the filters at the top to filter and locate the entitlements granted to your account.
- 4 Click the key icon located against the entitlement ID for which you wish to generate a license key. The **Generate License Key** page is displayed. Verify your account details for which you plan to generate the license key.
- 5 Select the product version for which you want to generate the key. By default, the latest product version is selected.
- 6 Specify the license quantity that you wish to deploy using the key. By default, the entire available quantity is displayed in the field. You can utilize a partial subset of your entitled licenses with this key and generate a separate key for the remainder.

Note: If you create a key for less than the entitled quantity and if you wish to increase the quantity of the systems later using the entitlement associated with the key, you must create a new key for the additional systems. On the contrary, to reduce the number of systems associated with a key, you need to assign a new key to the reduced systems and edit the older key.

- 7 Provide the host lock string of the system where APTARE IT Analytics will be installed using this key.

To get the correct host lock string, run one of these commands on the portal server:

- Linux: `/opt/aptare/utils/VxLicGetHostLock.sh`

On Linux, `VxLicGetHostLock.sh` uses `hostname --fqdn` commands to get the hostname of the system and uses it to create the host string. Hence, ensure `hostname --fqdn` returns a fully qualified host name, instead of a short name. For example, the command output must have at least one dot (.) character.

- Windows:C:\opt\aptare\utils\VxLicGetHostLock.ps1

If you have not installed the APTARE IT Analytics Portal, you can download the `VxLicGetHostLock.sh` or `VxLicGetHostLock.ps1` from the Veritas download center and run the appropriate script depending on the OS of the Portal server.

- 8 After running `VxLicGetHostLock.sh` or `VxLicGetHostLock.ps1` file, you get the following output:

```
Veritas Get Host Lock utility v1.0.0.0  
Copyright (c) 2022 Veritas Technologies LLC. All rights reserved.
```

```
FQDN: xyz.abc.com  
Host Lock String: [sha512]4aba838e350d3c9471aa5334db5de8ad4a0ff  
45e34a6cfaea064f4ca77812acd4c8abc7be6b2d756574b7d6e06ceb9581357  
b824f4f70f84b39d938e85ee62b5
```

While generating the license key on VEMS use the same host lock string including `[sha512]`.

For example:

```
[sha512]4aba838e350d3c9471aa5334db5de8ad4a0ff  
45e34a6cfaea064f4ca77812acd4c8abc7be6b2d756574b7d6e06ceb9581357  
b824f4f70f84b39d938e85ee62b5
```

- 9 Add comments about to the license key if required for the future reference.
- 10 Click **Generate**. The Generated Key page is displayed with the new key in the **License Key** column. You can click the key link and save it locally.

Install a license

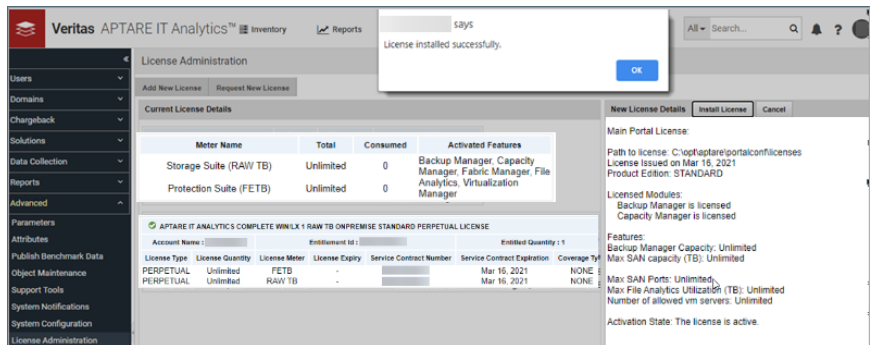
Use the procedures listed in this section to install the Portal license. Your login credentials must be assigned the Super User role.

As a best practice, install your license directly through the Portal. Instructions for the command-line installation practices are available.

See [“Install a license on Linux Portal platform”](#) on page 33.

To install a license:

- 1 Receive the new license file and save the new license file on your Portal server and complete the subsequent steps.
- 2 Upload the New License
 - Navigate to **Admin > Advanced > License Administration**. The Portal displays your current license details.
 - Click **Add New License**.
 - Browse to locate the license file on your Portal server and click **OK**.



3 Verify the License Installation.

See [“Verify the current license configuration”](#) on page 34.

If you have issues with license installation, try uploading the license file again to overwrite the previous one.

Verify the current license configuration

As a Super User, there are a number of ways that you can validate your current license configuration:

- Run the License Summary report in the Portal.
See [“Run the License Summary report”](#) on page 14.
- Click Help About in the Portal.
See [“Help About”](#) on page 14.
- View the License Details.
See [“View License Details”](#) on page 15.

Run the License Summary report

- 1 Log into the Portal as a Super User.
- 2 Search for License Summary.
- 3 Generate the **License Summary** report.

Reports		License Summary		x		+			
License Summary <small>Apr 8, 2021 8:31:47 AM</small>								Actions	
Licensed Module	Licensed Unit	Licensed	Used	Used %	Remain	Rejected	Portal Version	Oracle Version	License Expiration
Storage Suite	Raw TB	Unlimited	0.00	0.00%	Unlimited	0	10.6.00.20210316015227	Oracle Database 19c Standard Edition 2 Release 19.0.0.0.0 - ProductionVersion 19.8.0.0.0	Jun 6, 2021 11:59:59 PM
Protection Suite	FETB	Unlimited	0.00	0.00%	Unlimited	0	10.6.00.20210316015227	Oracle Database 19c Standard Edition 2 Release 19.0.0.0.0 - ProductionVersion 19.8.0.0.0	Jun 6, 2021 11:59:59 PM
<small>Note: 1 FETB(Front End Terabyte) = 2.5 clients conversion factor used to convert number of clients to FETB. Copyright (©) 2021 Veritas Technologies LLC. All rights reserved.</small>									

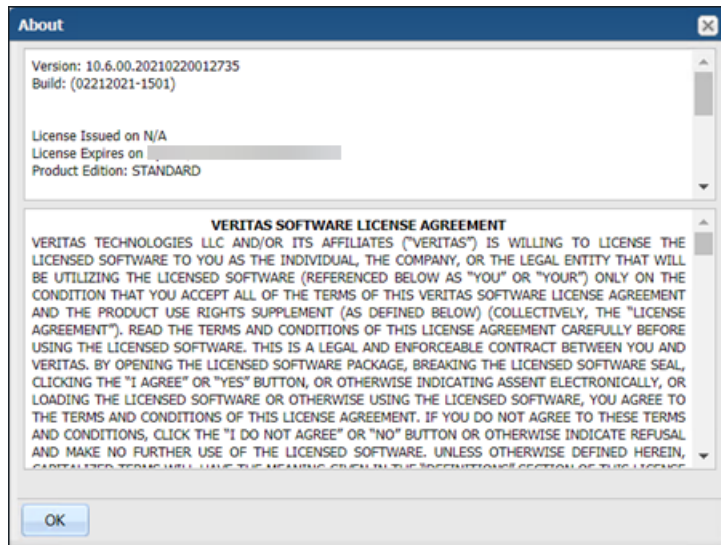
Using this report, you can drill down to additional details about counted objects.

Help About

Log in to the Portal as a Super User and in the Portal toolbar, select:

Help > About

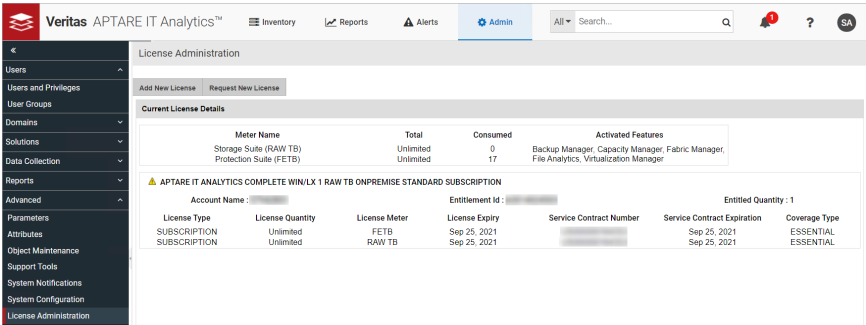
The license details are displayed.



Note: Users without Super User privileges cannot view the license configuration details. Only the end user license agreement is displayed.

View License Details

View license details--that is, the specific capabilities that are associated with the license that was purchased for your environment by navigating to **Admin>Advanced>License Administration**. Your current license details are displayed.



Consumption criteria of license suites

The license consumption for each suite is explained in their respective section. The component description explains how each client is counted.

License suites:

- [Storage suite](#)
- [Protection suite](#)
- [Complete suite](#)

Storage suite

Storage suite comprises of licenses specific to the following components:

- Capacity Manager
- Fabric Manager
- Virtualization Manager. This component is common across all the three license suites and its license consumption criteria is explained under the protection suite.

The Storage suite uses RAW Terabyte as the meter to consume a license. The license consumption criteria for products specific to each component is explained in the sections below.

Capacity Manager

When licensing Capacity Manager, the license is based on the raw amount of SAN storage in your environment. APTARE IT Analytics only includes arrays that have been polled within the last 30 days.

Storage Array Capacity license criteria

Note: The following description applies to most storage arrays, with the exceptions listed in the following section.

See [“Vendor-specific capacity license criteria”](#) on page 16.

Licensing is based on the raw capacity of storage arrays, for arrays that have been polled within the last 30 days. This capacity is the total capacity of all the physical disks in the storage array. If arrays are provisioning storage to other arrays and we are capturing data from the source arrays, to avoid double-counting of capacity, only the capacity of the source arrays (not the recipient arrays) is counted toward licensing.

Vendor-specific capacity license criteria

The following vendor-specific descriptions list how raw capacity is calculated for certain specific vendors.

EMC Symmetrix Arrays

Sum of the capacity of all physical disks from all array groups--no spares. **Note:** When viewing raw capacity in EMC Control Center, disk group 0 (hot spares) is not included in the total capacity calculation--accounting for the difference between the EMC and Capacity Manager reported capacity values.

EMC CLARiiON Arrays

Sum of the capacity of all physical disks from all array groups--including spares (drives that are not allocated to an array group).

HDS Arrays

Sum of capacity of all PDEVs from all array groups. Capacity Manager assumes that all PDEVs are part of an array group, so PDEVs that are marked as--Not included in an array group--are included in the capacity calculation. That is, no disks are treated as spares.

NetApp Arrays

Sum of the capacity of all physical disks in the filer/array. For NetApp vFilers and V-Series, this represents only internal raw capacity and does not include vFiler capacity or gateway external capacity.

Fabric Manager

Counts licensed switch ports. For example, licensing checks if the switch has been licensed from the vendor, such as Brocade.

Protection suite

This license suite comprises of:

- Backup Manager
- Virtualization Manager

The Protection Suite uses Front End Terabyte (FETB) as the meter for license consumption and the below conversion factor is used to convert number of clients to FETB:

1 FETB = 2.5 clients

The consumption criteria for each product of these components is explained in the sections below.

Backup Manager

A Backup Manager Unit License is required for each physical or virtual host that contains supported third-party backup software agent/server software. This includes, but is not limited to, master servers, media servers, and clients. A Backup Manager Unit License is required for each of the logical instances, not just one license for the physical machine. In this discussion, client is synonymous with backup unit.

Cohesity DataProtect

- Counts unique objects such as datastores, resource pools, virtual machines, etc. that have had a backup job in the last 7 days.
- Counts unique clients for objects such as NAS, Directory and files that have had a backup job in the last 7 days.

Commvault Simpana

Client is counted if any of the following bullets apply:

- The client has one or more iDataAgents configured.
- The client was backed up (or had a backup attempt) within the last 7 days. This includes decommissioned clients.
- The client is a media server or a master server.
- The client is a VM guest that has been backed up within the last 7 days. This includes decommissioned clients.

Dell EMC NetWorker Backup & Replication

- Counts unique objects such as datastores, resource pools, virtual machines, etc. that have had a backup job in the last 7 days.
- Counts unique clients for objects such as NAS, Directory and files that have had a backup job in the last 7 days.

Note: EMC NetWorker is documented based on vendor version number. Legacy versions of EMC NetWorker (pre version 9.2.1.x) are referred to as EMC NetWorker. For EMC NetWorker versions post 9.2.1.x, they are referred to as Dell EMC NetWorker Backup & Recovery. This is also reflected in the data collector policy names.

EMC Avamar

Client is counted if any of the following bullets apply:

- Avamar provided client data in the last 7 days. This includes decommissioned clients.
- It is an Avamar server
- The client is not in the Avamar MC_RETIRED domain

EMC NetWorker

Client is counted if any of the following bullets apply:

- The client resource is active
- The client was backed up (or had a backup attempt) within the last 7 days. This includes decommissioned clients.
- The client is a media server or a master server.
- The client is a VM guest that has been backed up within the last 7 days. This includes decommissioned clients.

Generic backups

Client is counted if any of the following bullets apply:

- The client was backed up (or had a backup attempt) within the last 7 days. This includes decommissioned clients.
- For generic backups, only the jobs are captured.

HP Data Protector

Client is counted if any of the following bullets apply:

- The backup specification is active
- The client was backed up (or had a backup attempt) within the last 7 days. This includes decommissioned clients.
- The client is a media server or a master server.

IBM Spectrum Protect (TSM)

Node's client is counted if any of the following bullets apply:

- The client is a media server or a master server.
- The client was backed up (or had a backup attempt) within the last 7 days. This includes decommissioned clients.
- Counts all unique TSM clients for which any of the corresponding nodes on those clients have communicated with their TSM server/instance within the past 45 days (In TSM, this is NODES.LASTACC_TIME)

NAKIVO Backup & Replication

- Counts unique objects such as datastores, resource pools, virtual machines, etc. that have had a backup job in the last 7 days.

- Counts unique clients for objects such as NAS, Directory and files that have had a backup job in the last 7 days.

Oracle Recovery Manager (RMAN)

Counts unique databases listed in the Oracle RMAN recovery catalogs for which the database has had an Oracle RMAN backup job attempt within the last 90 days.

Rubrik Cloud Data Management

- Counts unique objects such as datastores, resource pools, virtual machines, etc. and files that have had a backup job in the last 7 days.
- Counts unique clients for objects such as NAS, Directory and files that have had a backup job in the last 7 days.

Veeam Backup & Replication

- Counts unique objects such as datastores, resource pools, virtual machines, etc. and files that have had a backup job in the last 7 days.
- Counts unique clients for objects such as NAS, Directory and files that have had a backup job in the last 7 days.

Veritas Backup Exec

Client is counted if any of the following bullets apply:

- Data was collected within the last 7 days.
- The client was backed up (or had a backup attempt) within the last 7 days. This includes decommissioned clients.
- The client is a media server or a master server.

Veritas NetBackup

Client is counted if any of the following bullets apply:

- The client is part of an active backup policy and the policy exists in the NetBackup catalog (if deleted in NetBackup, the Portal does not count them).
- The client was backed up (or had a backup attempt) in the last 7 days. This includes decommissioned clients.
- The client is a media server or a master server.

Virtualization Manager

Counts the number of VM servers.

Complete suite

This license suite comprises of products under Storage and Protection Suites, with an additional component of File Analytics. See [Storage suite](#) and [Protection suite](#) sections for respective license inclusions.

The criteria of license consumption of products under Storage and Protection Suites is explained above. The Complete Suite uses RAW Terabyte as a meter for license consumption. The consumption criteria of products included in File Analytics is explained in the subsequent sections.

File Analytics

Counts the total utilized capacity of all the shares and volumes. For NetBackup File Analytics, the count includes shares and volumes backed up by NetBackup.

Note: Once File Analytics data is collected, it cannot be removed from the license count.

Managing licenses

Data is collected either directly from individual enterprise objects, such as backup servers or storage arrays; or from a centralized system, such as Hitachi Device Manager or vCenter. There may be times when you no longer want to collect data from an object. You cannot simply delete that object, because the next time data collection retrieves data, the object will once again appear in your database. In most cases, objects must be excluded and then deleted; however, there are some exceptions. Use the guidance provided in the following sections to determine how to remove objects from license counts.

Managing objects collected from centralized systems

When collecting from a centralized system, such as Hitachi Device Manager or vCenter, APTARE IT Analytics relies on the system to supply the information on the devices and resources that are available. For objects collected via a centralized system, there are two methods for removing collected objects:

- **Preferred Method:** Go to the Data Collector policy in the Portal and use the “Exclude” field to exclude objects from collection. For example, for Hitachi Data

Systems, you would exclude arrays in the Data Collector policy. Similarly, for VMware, you would exclude ESX servers in the Data Collector policy. When you exclude objects through a Data Collector policy, APTARE IT Analytics will automatically delete these objects from the reporting database.

- Alternatively, you can go to the centralized system and decommission the object. In this case, you must also delete the object from the APTARE IT Analytics database.

See [“Removing objects from the license count”](#) on page 29.

See [“Deleting objects using the Inventory List view”](#) on page 31.

Managing directly probed enterprise objects

Many enterprise objects are probed directly to collect metadata. For objects that are probed directly, follow these steps to remove them from license counts:

- **Exclude from Collection:** If the object was captured during data collection, you will need to exclude it from collection so that future collections do not recapture the object.

See [“Exclude objects from future data collections”](#) on page 25.

For Backup Manager, you can go directly to the backup software and remove the client from the backup policy, according to the vendor’s instructions. In this case, you do not have to delete the object from the database.

- **Remove from License Count:** To remove a directly probed object from licensing consideration, you must delete the object via the Object Maintenance tool in the Portal.

See [“Removing objects from the license count”](#) on page 29.

See [“Deleting objects using the Inventory List view”](#) on page 31.

What happens to historical data?

Backup Manager operates differently from other products. Refer to the following section to determine the conditions under which backup clients are counted against your license. Typically, a client must be part of a backup policy or it must have been backed up recently, usually in the last 7 days.

See [“Consumption criteria of license suites”](#) on page 15.

Since Backup Manager involves transaction-based data rather than just object metadata, when an object is excluded from data collection, these time-sensitive transactions are retained for historical reporting.

All Other Licensed Modules, such as Capacity Manager and Virtualization Manager, do not keep historical data when objects are permanently deleted from the reporting database.

See [“Removing objects from the license count”](#) on page 29.

See [“What happens to historical data?”](#) on page 22.

Processes to manage license counts

Use the following strategies to determine how your licenses are being utilized and to work with the current license configuration.

- See [“Identify counted and excluded objects”](#) on page 23.
- See [“View the current license”](#) on page 25.
- See [“Delete clients”](#) on page 25.
- See [“Expand your license configuration”](#) on page 25.
- See [“Exclude objects from future data collections”](#) on page 25.
- See [“Removing objects from the license count”](#) on page 29.

Identify counted and excluded objects

- To list the objects that are being counted for licensing purposes, run the following utility:

Windows:

```
\opt\oracle\database\tools\debug\get_license_info.sql
```

Linux:

```
/opt/aptare/database/tools/debug/get_license_info.sql
```

- To list the clients that are not being included in reporting because the license limit has been exceeded, run the following SQL query:

```
select * from apt_rejected_object where is_obsolete != 'Y';
```

- To exclude objects that are not being included in reporting because the license limit has been exceeded, refer to the following section.
See [“Exclude objects from future data collections”](#) on page 25.

Stack multiple licenses

You can stack multiple licenses either from the APTARE IT Analytics Portal UI or through the command line.

To add a license from the Portal UI, follow the steps described in Installing a License section of this document. See [“Install a license”](#) on page 12.

To add a license from the command line, install using these OS-specific commands as applicable:

- On Linux:

```
/opt/aptare/utils/installlicenseUI.sh <path of the license file>
```

- On Windows:

```
C:\opt\aptare\utils\installlicenseUI.bat <path of the license file>
```

Note: When a permanent license is installed, any evaluation license that is installed will be removed.

Add license with higher entitlement

You can add licenses with higher entitlement either from the APTARE IT Analytics Portal UI or through the command line.

To add a license from the Portal UI, follow the steps described in Installing a License section of this document. See [“Install a license”](#) on page 12.

To add a license from the command line, install using these OS-specific commands as applicable:

- On Linux:

```
/opt/aptare/utils/installlicenseUI.sh <path of the license file>
```

- On Windows:

```
C:\opt\aptare\utils\installlicenseUI.bat <path of the license file>
```

Note: When a permanent license is installed, any evaluation license that is installed will be removed.

Change the license edition

APTARE IT Analytics 10.6 does not allow adding a new license of a different edition than what is currently installed. To install a license of a different edition, you must

remove the existing APTARE IT Analytics 10.6 license and then install the new license.

To remove the current licenses, run these commands based on the OS:

- On Linux, execute this script as a root user.
`/opt/aptare/utils/removeLicenseFiles.sh`
- On Windows, execute this script as an administrator:
`C:\ opt\aptare\utils\removeLicenseFiles.bat`

View the current license

See [“Verify the current license configuration”](#) on page 34.

Delete clients

For Backup Manager, if you purge clients, the table that tracks rejected clients automatically frees up the license slots so that other clients can be added. Use the host group management features to delete old clients.

Front End Terabyte (FETB) is used as a meter to calculate the licenses freed when the clients are purged. The below conversion factor is used to convert the number of clients to FETB:

1 FETB = 2.5 clients

Note: Clients decommissioned in the native backup product, via removal from all active backup policies, consume an APTARE IT Analytics license until after 48 hours from the last backup.

Expand your license configuration

Purchase additional licenses to enable reporting for all objects to be collected. Contact Veritas Sales.

Exclude objects from future data collections

Two methods can be used to exclude objects from data collection, depending on the type of object to be excluded.

- See [“Configure the Data Collector policy to exclude the object”](#) on page 26.
- See [“Add objects to the Object Exclusion Database table”](#) on page 28.

Configure the Data Collector policy to exclude the object

Certain Data Collector Policies can be configured to exclude an object from data collection. This method should be used if it's available for the object you want to exclude.

- Exclude Arrays: EMC Symmetrix and Hitachi Data Systems
- Exclude ESX Servers: VMware
- Exclude Switches: Brocade

Example of configuring a Data Collector policy to exclude arrays

1. In the Portal, **Admin>Data Collection>Collector Administration**
2. Select a Collector and a relevant policy. For this example, Hitachi Block Storage is shown.

Hitachi Block Storage Data Collector Policy

Collector Domain:
qaproduct80

Policy Domain:
qaproduct80

Hitachi Device Manager Server:*

User ID:* Password:*

Repeat Password:*

Exclude Arrays:

Active Probes **Schedules**

Array Details Every day at 02:01

Array Performance Every 15 minutes

HTnM Install Location:

HDT Collection

Notes:

Enter one or more array names to be excluded. Comma-separated names are supported. Example:
USPV_1@172.16.1.13, USPV_2@172.16.1.14.

OK Cancel Help Privacy Policy

3. If the object is already in the database, the object also will need to be deleted from the database in order to exclude it from the license count.

See [“Removing objects from the license count”](#) on page 29.

Add objects to the Object Exclusion Database table

To exclude objects (such as clients, ESX hosts, and arrays) from data collection, the object must be inserted into the `apt_exclude_object` table. If the object is already in the database, the object also will need to be deleted from the database in order to exclude it from the license count.

See [“Removing objects from the license count”](#) on page 29.

See [“Deleting objects using the Inventory List view”](#) on page 31.

1. Open a terminal to the Portal server (Linux) or a command prompt on the Portal server (Windows)

For Linux, `su - aptare`

2. Execute: `sqlplus <ID>/<password>`
3. Use the following SQL statement to view the exclude object table:

```
SQL> desc apt_exclude_object;
Name Null? Type
-----
DOMAIN_IDNOT NULLNUMBER(6)
OBJECT_NAMENOT NULLVARCHAR2(64)
CREATION_DATENOT NULLDATE
APTARE_PRODUCT_TYPENOT NULLNUMBER(2)
```

Note: For `APTARE_PRODUCT_TYPE` you will substitute one of the following numeric values in the command line execution of the procedure, listed later in these steps.

- Backup Manager = 1
 - Capacity Manager = 2 (used for Array objects)
 - Virtualization Manager = 4
 - Replication Manager = 8
 - Fabric Manager = 16
 - File Analytics = 32
4. Execute: `select domain_name, domain_id from apt_domain;`
This is to capture the domain ID, needed for subsequent script executions.

Typically, the domain ID will be 100000, however, in a multi-tenancy, Managed Services environment, the domain ID will be specific to the client's domain.

```
SQL> select domain_name, domain_id from apt_domain;
DOMAIN_NAME DOMAIN_ID
-----
CORP07 100000
```

5. Execute the following, substituting your specific values:

```
SQL> insert into apt_exclude_object (domain_id, object_name,
aptare_product_type, creation_date) values (100000, 'Array 123',2,
sysdate);
```

This step adds (inserts) this object into the object exclusion database table. For object_name substitution, use the name, such as the host or array name.

6. Repeat step 5 for all objects that need to be excluded from data collection.
7. After completing all the inserts, execute: **commit**;
8. If the clients are already in the database, you will need to delete them from the database so they will not be counted against your license.

See [“Removing objects from the license count”](#) on page 29.

Removing objects from the license count

To remove the object from the license count, you must completely remove the object and its data from the system.

Objects are maintained in the Inventory and Object Maintenance.

Use the following table to determine which area to use to delete the objects.

Table 1-3

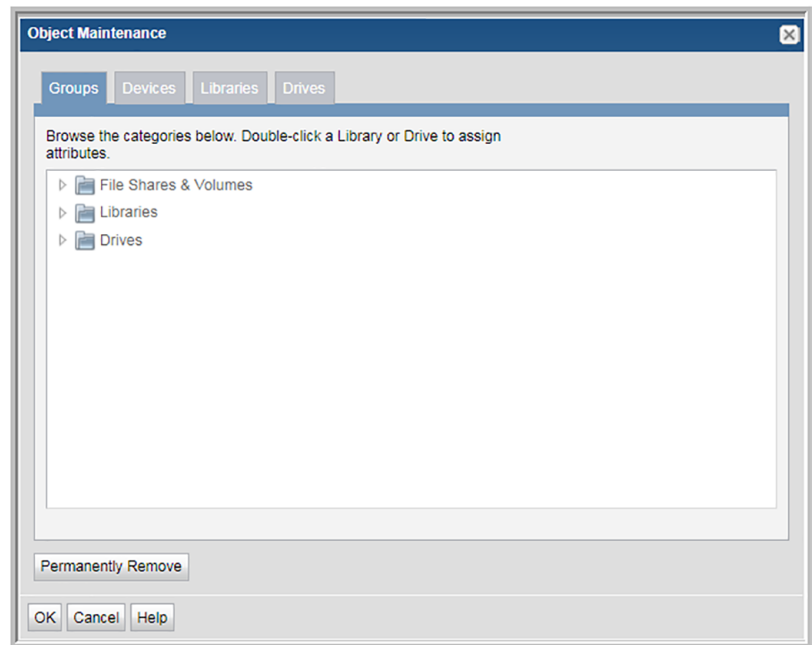
Object Type	Product Area for Management
Arrays	Inventory
Backup Servers	Inventory
Dedupe Appliances	Inventory
File Shares and Volumes	Inventory
Drives	Object Maintenance

Table 1-3 (continued)

Object Type	Product Area for Management
Hosts	Inventory
Libraries	Object Maintenance
Switches	Inventory
VM Servers	Inventory

To delete objects using Object Maintenance

- 1 Navigate to **Admin>Advanced>Object Maintenance**.



- 2 Locate the object to delete.
- 3 Select the object and click **Permanently Remove**.

As the button suggests, you are not just removing the object from the license count; you are completely removing it and any data collected from the system.

Deleting objects using the Inventory List view

If you choose to delete an **object** (if you have privileges) you are irretrievably deleting the object from the reporting database. All related historical data will also be permanently deleted from the database and unavailable in all reports. A pop-up window warns you of this action to prevent inadvertent deletions.

When you delete a host, it removes everything related to the host except the VM Server. To remove the related VM Server, you just explicitly delete it using the Inventory window. This prevents servers from being orphaned in the database.

In most cases, you should remove a host from a group, thereby un-linking it from its relationship with other machines in that group.

To delete objects using the Inventory

Note: VM Guests, individual LUNs, S3 Buckets, EC2 Instances, Azure Storage Accounts, Azure Virtual Machines and datastores cannot be deleted.

- 1 Select **Inventory**.
- 2 Select the object type category and expand to view.
- 3 Toggle to the **Inventory List** view.
- 4 Select an individual object or you can multi-select.
- 5 Click **Delete**. Remember all related historical data will also be permanently deleted from the database and unavailable in all reports. A confirmation dialog is displayed.

License management from command line

This chapter includes the following topics:

- [Overview](#)
- [Install a license on Microsoft Windows Portal platform](#)
- [Install a license on Linux Portal platform](#)
- [Verify the current license configuration](#)
- [Removing a Portal license](#)

Overview

As a best practice, install your license directly through the Portal. Alternatively, a command-line installation is available.

See [“Install a license on Microsoft Windows Portal platform”](#) on page 32.

See [“Install a license on Linux Portal platform”](#) on page 33.

Install a license on Microsoft Windows Portal platform

Receive and save the license file on your portal server and then complete all of the following steps.

1. Ensure that the Oracle Processes are Running.

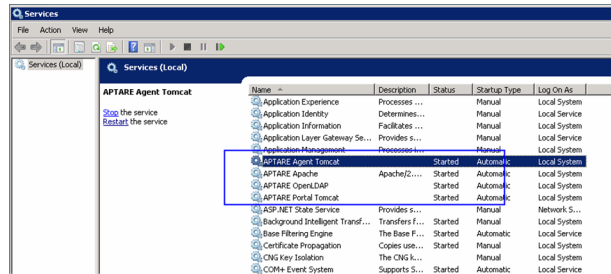
```
C:\opt\aptare\utils\startoracle.bat
```

2. Open a DOS command prompt window using **Start > Run > cmd**
3. Run the license installer utility: `C:\opt\aptare\utils\installLicense.bat`
4. Enter the complete path to the license key file you saved on your server when prompted for the name of the license file. A sample dialog is shown below:

Enter the name of the license file you wish to install [*.slf] :

```
C:\Users\Administrator\Documents\Slic\  
A3351334429_QTY200_APTARE_ITA_10_6_COMPLETE_STANDARD_DR_LIC_NNL_4756411672.slf  
Verifying license...  
License installed
```

Verify that the services are running by viewing the Services panel:



5. Verify the License Installation.
See [“Run license verification utility”](#) on page 35.

Install a license on Linux Portal platform

Receive and save the license file on your portal server and then complete all of the following steps.

1. Ensure that the Oracle Processes are Running: Log in as **root** on your APTARE IT Analytics Database server (the Database and Portal servers are usually the same physical server).

```
/opt/aptare/bin/oracle start
```

2. Run the Installation Script: Log in as **root** on your APTARE IT Analytics Portal server.

```
/opt/aptare/utils/installlicenseUI.sh
```

3. When prompted for the name of the license file, enter the complete path to the license key file you saved on your server.

For example:

```
Enter the name of the license file
you wish to install [*.*.slf]: /opt/aptare/license.slif
Verifying license...
License installed.
```

4. Verify the license installation.

See [“Run license verification utility”](#) on page 35.

Verify the current license configuration

There are a number of ways that you can validate your current license configuration.

- In the Portal, either run the License Summary report or see the Help About.
See [“Run the License Summary report”](#) on page 14.
See [“Help About”](#) on page 14.
- See [“Run report configuration utility”](#) on page 34.
- See [“Run license verification utility”](#) on page 35.

Run report configuration utility

Typically, you'll run this report when requesting a license key file so that you can include actual hostname or Host Lock String in your license request. If you already have installed the Portal software, run the following command and include the output in the email.

- Windows:

```
C:\opt\aptare\utils\reportconfig.bat
```

- Linux:

```
/opt/aptare/utils/reportConfig.sh
```

Sample Output:

```
Veritas Get Host Lock utility v1.0.0.0
Copyright (c) 2021 Veritas Technologies LLC.
All rights reserved.
```

```
FQDN: sclcplnx18vm17.rsv.ven.veritas.com
Host Lock String: [sha512]8593c605127b368a9cde7158a704
adcce15db165539adbdc7f8dafcf76bdf75cc3af0d3069c925a571
d498d2d7b9cd2908441835891885ac3266768ca6d28efc
```

```
Veritas Get Host Lock utility v1.0.0.0
Copyright (c) 2021 Veritas Technologies LLC.
All rights reserved.
```

```
FQDN: myhost.mycompany.com
Host Lock String:
[sha512]8593xxxxxxxxxxxxxxxxxxxxxxxxxxxxxxxxc3266768ca6d28efc
```

Run license verification utility

Typically, you will run this utility after you install the license key.

This utility connects to the database and then compares the counts and names of the licensed components with the values contained within the installed license key. For an evaluation license, the report will show the date/time that the license key will expire--that is, when the software will no longer function.

Log in as a user with super-user privileges and use the following utility to check the licensed components that are currently enabled in your environment.

Windows:

```
C:\opt\aptare\utils\verifyLicense.bat
```

Linux:

```
/opt/aptare/utils/verifyLicense.sh
```

The most important part of this report is the last section titled: VERIFYING LICENSE AGAINST CONFIGURATION. If this section is blank, there are no license violations and you have correctly installed the license and, in addition, the number of licensed components within the product matches the installed license key.

The LICENSE DETAILS portion of this report shows the specific capabilities that are associated with the license that was purchased for your environment.

Sample output:

```
===== LICENSE DETAILS =====
```

```
Main Portal License:
```

```
Path to license: c:\opt\aptare\portalconf\licenses
License Issued on Jan 12, 2021 12:00:00AM IST
Product Edition: STANDARD

Licensed Modules:
    Backup Manager is licensed
    Capacity Manager is licensed

Features:
Max SAN capacity (TB): 300
Backup Manager Capacity: 300

Max SAN Ports: Unlimited
Max File Analytics Utilization (TB): Unlimited
Number of allowed vm servers: Unlimited

Activation State: The license is active.
===== REPORT COMPLETE =====
```

Removing a Portal license

To remove a portal license or to address issues while license installation, use the following steps to first remove the license and then reinstall.

Windows

1. On the Portal, shut down the data receiver by running:

```
C:\opt\aptare\utils\stopagent.bat
```

2. Shut down the Portal by running:

```
C:\opt\aptare\utils\stopportal.bat
```

3. Run the script to remove license files:

```
C:\opt\aptare\utils\removelicensefiles.bat
```

Linux

1. On the Portal, shut down the data receiver.

```
/opt/aptare/bin/tomcat-agent stop
```

2. Shut down the Portal.

```
/opt/ptare/bin/tomcat-portal stop
```

3. Run the script to remove license files:

```
/opt/ptare/utils/removeLicenseFiles.sh
```

Troubleshooting

This chapter includes the following topics:

- [License install fails with 'License is already issued for another host' error](#)

License install fails with 'License is already issued for another host' error

Sometimes, the APTARE IT Analytics license installation fails with the below error:

```
License is already issued for another host.
```

This error is mainly observed on Linux-based systems.

License install fails with 'License is already issued for another host' error**To fix this error:**

- 1** Ensure you enter the correct host string on the VEMS portal as displayed by the utilities, such as:

```
/opt/aptare/utlils/reportConfig.sh
```

or

```
/opt/aptare/utlils/VxLicGetHostLock.sh
```

The host string entered on VEMS must also include [sha512].

- 2** `reportConfig.sh` and `VxLicGetHostLock.sh` use `hostname --fqdn` command to get the hostname of the system and to create the host string.

Ensure `hostname --fqdn` returns a fully qualified host name. For example, the command output must have at least one dot (.) character.

- 3** If the host is not configured with DNS, ensure that `/etc/hosts` file on the system has the host resolution of the IP of the system with the fully qualified host name as the first entry (*<IP of the system> <FQHN of the system>*).

For example, a host with `abc` as host name and `xyz.com` as domain name:

```
1.2.3.4 abc.xyz.com
```