

Veritas Storage Foundation™ and High Availability Solutions for Windows

PRIVATE 1239935: Exchange 2007 SP1
Upgrade Wizard for VCS

README

5.0 Rollup Patch 1a



Veritas Storage Foundation and High Availability Solutions

PRIVATE 1239935 Readme

Copyright © 2008 Symantec Corporation. All rights reserved.

Storage Foundation and HA 5.0 RP1a for Windows

Symantec, the Symantec logo, and Veritas are trademarks or registered trademarks of Symantec Corporation or its affiliates in the U.S. and other countries. Other names may be trademarks of their respective owners.

The product described in this document is distributed under licenses restricting its use, copying, distribution, and decompilation/reverse engineering. No part of this document may be reproduced in any form by any means without prior written authorization of Symantec Corporation and its licensors, if any.

THIS DOCUMENTATION IS PROVIDED “AS IS” AND ALL EXPRESS OR IMPLIED CONDITIONS, REPRESENTATIONS AND WARRANTIES, INCLUDING ANY IMPLIED WARRANTY OF MERCHANTABILITY, FITNESS FOR A PARTICULAR PURPOSE OR NON-INFRINGEMENT, ARE DISCLAIMED, EXCEPT TO THE EXTENT THAT SUCH DISCLAIMERS ARE HELD TO BE LEGALLY INVALID, SYMANTEC CORPORATION SHALL NOT BE LIABLE FOR INCIDENTAL OR CONSEQUENTIAL DAMAGES IN CONNECTION WITH THE FURNISHING PERFORMANCE, OR USE OF THIS DOCUMENTATION. THE INFORMATION CONTAINED IN THIS DOCUMENTATION IS SUBJECT TO CHANGE WITHOUT NOTICE.

The Licensed Software and Documentation are deemed to be “commercial computer software” and “commercial computer software documentation” as defined in FAR Sections 12.212 and DFARS Section 227.7202.

Symantec Corporation
20330 Stevens Creek Blvd.
Cupertino, CA 95014
www.symantec.com

Third-party legal notices

Third-party software may be recommended, distributed, embedded, or bundled with this product. Such third-party software is licensed separately by its copyright holder.

Technical support

For technical assistance, visit:

<http://www.symantec.com/business/support/index.jsp>

Select phone or email support. Use the Knowledge Base search feature to access resources such as TechNotes, product alerts, software downloads, hardware compatibility lists, and our customer email notification service

Private 1239935: Exchange 2007 SP1 Upgrade Wizard for VCS

This Readme provides information about the SFW HA 5.0 RP1a Private 1239935. Review this entire document before installing the Private.

About this Private

Private 1239935 contains the Exchange 2007 Service Pack 1 (SP1) Upgrade Wizard for VCS. This wizard enables you to upgrade Exchange 2007 to Exchange 2007 SP1, in a VCS cluster environment.

This Private is supported with the following software:

- Storage Foundation and High Availability for Windows 5.0 Rollup Patch 1a

or

- Veritas Cluster Server 5.0 Rollup Patch 1a for NetApp SnapMirror

Before you install this Private ensure that one of these softwares is installed on the cluster nodes.

Installing the Private

Complete the following steps to install Private 1239935.

To install the Private

- 1 Download and extract the following Private zip file to a temporary location on the cluster node.

Private_5_0_0205_1239935_x64.zip

The .zip file contains the following files:

Table 1-1 Private 1216934 zip file contents

Name of the file	Version number
Exch2007Upgrade.exe	5.0.0205.438
Exch2007Upgrade_Lang_en.dll	5.0.0205.438

- 2 Copy the extracted files, Exch2007Upgrade.exe and Exch2007Upgrade_Lang_en.dll, to %VCS_HOME%\bin\Exch2007Setup directory. The variable %VCS_HOME% is the default installation directory for VCS, typically C:\Program Files\Veritas\Cluster Server.
- 3 Replace these files on all the remaining cluster nodes.
- 4 Proceed to upgrading Exchange 2007. See “[Upgrading Exchange 2007 to Exchange 2007 SP1](#)” on page 3.

Upgrading Exchange 2007 to Exchange 2007 SP1

This section describes how to upgrade Exchange 2007 to Exchange 2007 SP1 using the Exchange 2007 Upgrade Wizard for VCS. It is applicable only if you already have Exchange 2007 set up in a VCS cluster environment.

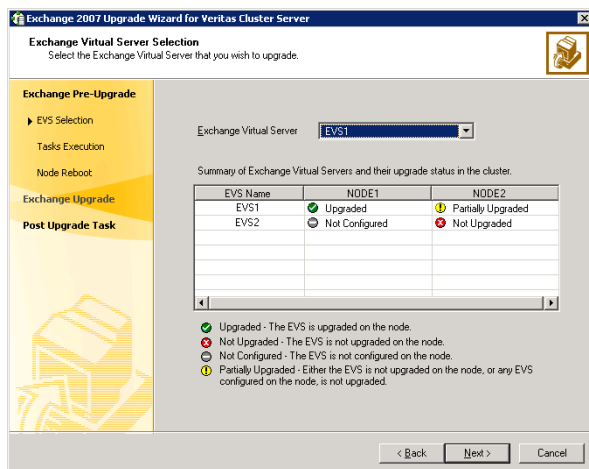
Before you proceed with the Exchange 2007 upgrade, note the following:

- Ensure that the Exchange 2007 service group is offline in the cluster.
- While performing the upgrade the Exchange 2007 Upgrade Wizard renames and then restarts the cluster node. Exit all the other programs before you run the wizard on a cluster node.

Complete the following steps on all cluster nodes that are part of the Exchange 2007 service group, one node at a time.

To upgrade Exchange 2007 to Exchange 2007 SP1

- 1 On one of the cluster nodes, navigate to the directory %VCS_HOME%\bin\Exch2007Setup and double-click Exch2007Upgrade.exe to start the Exchange 2007 Upgrade Wizard. The variable %VCS_HOME% is the default installation directory for VCS, typically C:\Program Files\Veritas\Cluster Server.
- 2 Review the information on the Welcome panel and click **Next**.
- 3 On the Exchange Virtual Server Selection panel, select the Exchange virtual server that you wish to upgrade and then click **Next**. The Summary table provides the details of the Exchange virtual servers in the cluster and their upgrade status on each cluster node.



- 4 The wizard performs the tasks required to set up the VCS environment for the Exchange upgrade. The Tasks table displays the progress of the various tasks. After all the tasks are completed, click **Next**.
- 5 Review the information on the Cluster Node Reboot panel and then click **Reboot**. The wizard prompts you to reboot the node. Click **Yes** to reboot the node.

The selected Exchange virtual server name is temporarily assigned to the cluster node. On rebooting the node, the Exchange 2007 Upgrade Wizard is launched automatically with a message that the Exchange pre-upgrade tasks are complete. Do *not* click **Continue** at this time. Wait until after the Exchange upgrade is complete.

- 6 Run the Microsoft Exchange 2007 SP1 installer to upgrade Exchange 2007 on the node.

Type the following at the command prompt:

```
<drive letter>:\setup.com /mode:Upgrade
```

Here <drive letter> is the drive where the Exchange 2007 SP1 installer is located.

Note: You can also run Setup.exe to upgrade Exchange using the installer GUI. If using the installer GUI, ensure that you do not select any other Exchange 2007 server role. Only the Mailbox server role must be upgraded.

Verify that the upgrade has completed successfully. In case there are errors or if the upgrade has partially succeeded or has failed, resolve the errors and ensure that the upgrade is successful.

Refer to the Microsoft Exchange documentation for more information.

- 7 Return to the Exchange 2007 Upgrade Wizard and click **Continue**.
If the wizard is not running, navigate to the directory
%VCS_HOME%\bin\Exch2007Setup and double-click
Exch2007Upgrade.exe to start the wizard and then click **Next**.
The variable %VCS_HOME% is the default installation directory for VCS,
typically C:\Program Files\Veritas\Cluster Server.
- 8 The wizard performs the tasks required to set up the VCS environment after the Exchange upgrade. The Tasks table displays the progress of the various tasks. After all the tasks are completed, click **Next**.
- 9 Review the information on the completion panel and then click **Finish**.
The wizard displays the status of the Exchange virtual server upgrade. The Summary table provides the details of the Exchange virtual servers in the cluster and their upgrade status on each cluster node.

- 10 Repeat these steps on the remaining cluster nodes. After you have upgraded all the cluster nodes that are configured to host the Exchange virtual server, bring the Exchange 2007 service group online in the cluster.

Note: Do not bring the Exchange 2007 service group online until you have completed the upgrade on all the cluster nodes that are part of the service group.

Upgrade considerations in case of multiple Exchange virtual servers

Consider the scenario where there are multiple Exchange virtual server instances in the cluster (an any-to-any configuration).

[Table 1-2](#) describes the configuration objects.

Table 1-2 Exchange 2007 SP1 upgrade configuration objects

Object	Description
Node1, Node2, Node3	Physical node names
EVS1, EVS2	Exchange virtual servers

The configuration is such that:

- EVS1 can fail over on Node1 and Node2.
- EVS2 can fail over on Node3 and Node2.

So, Node2 is the common failover node for EVS1 and EVS2.

In this case, Symantec recommends that you upgrade the Exchange virtual servers in the following order:

- Upgrade EVS1 on Node1.
- Upgrade EVS2 on Node3.
- And then upgrade either EVS1 or EVS2 on Node2.
You must upgrade Node2 (the common failover node) only once; the Exchange virtual server (whether EVS1 or EVS2) does not matter.

In general, for multiple Exchange virtual servers, upgrade each Exchange virtual server on one cluster node first, and then upgrade any one of the Exchange virtual servers on the common failover nodes.

