

Information Map Feature Briefing Information Map Agent

This document describes the Information Map Agent.

If you have any feedback or questions about this document please email them to ii-tec@veritas.com stating the document title.

Feature Description

The Veritas Information Map Agent is one part of the overall Information Fabric Technology Platform. The agent is installed on an Information Map Agent Server. The agent collects metadata from NetBackup backup catalogs and sends the information to the Information Fabric Technology Platform in the Veritas™ cloud.

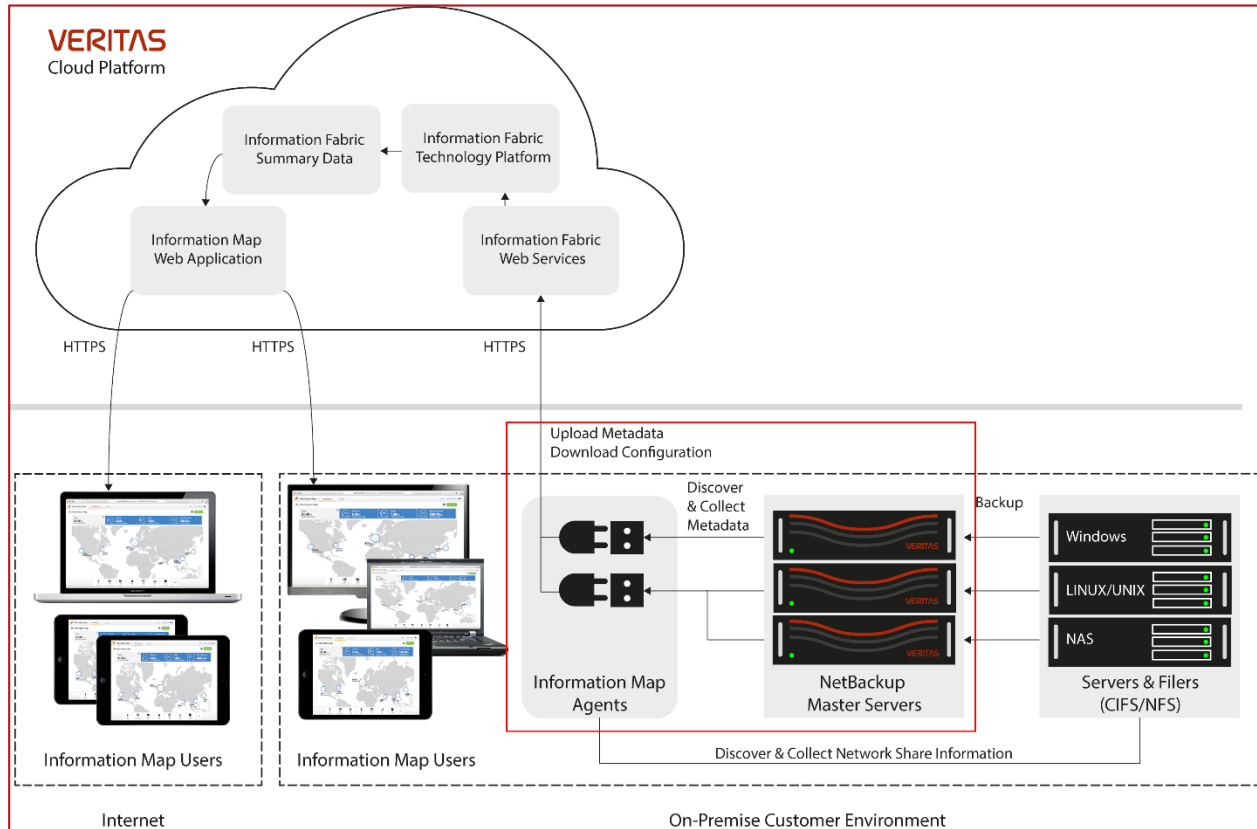


Figure 1 – Information Fabric Technology Platform Overview

Underlying Principles

The Information Map Agent works by collecting metadata from NetBackup catalogs as well as file share information from file servers/filers that are protected by NetBackup. The Information Map Agent Server must be added in to the Servers section of the NetBackup Master Server configuration. The network name for the Agent Server must be resolvable in DNS for reverse name lookups (such as *infomap.company.com* resolving to *192.168.0.150*).

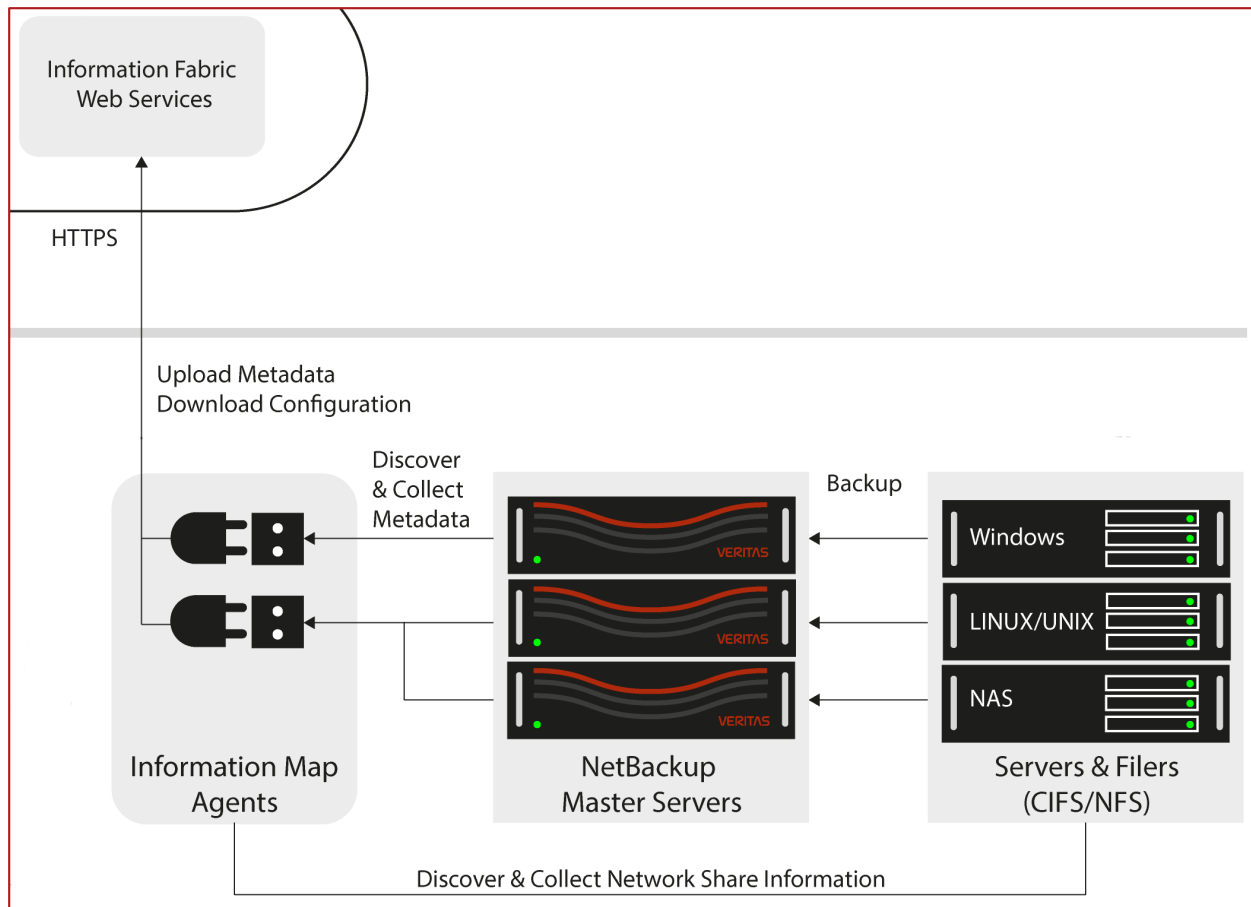


Figure 2 – Information Map Agent Components

Collected information is then sent securely to the fabric environment using TLS. The schedule at which information is sent is controlled by settings in the Information Map Administration section. Uploaded information is updated in Information Map within 24 hours.

The Information Map Agent Server needs to be a separate physical or virtual machine from the NetBackup Master Server and must not have NetBackup Media or Client software installed. The server should also reside on the same highly connected network as the master server, preferably within the same data center.

Metadata collection times can be adjusted using the Administration section in the Information Map. More details on this configuration are provided later on in this document.

Veritas will periodically update the agent software. An Agent Server can be configured to automatically apply the latest version of the agent software.

Guided Tour

This section will provide a high-level overview of how to install and configure the Information Map Agent.

Preparing NetBackup

The name of the system that will run the Information Map Agent must be added to the Servers list on NetBackup Master Servers. This can be accomplished using the NetBackup Administration Console as shown in Figure 3.

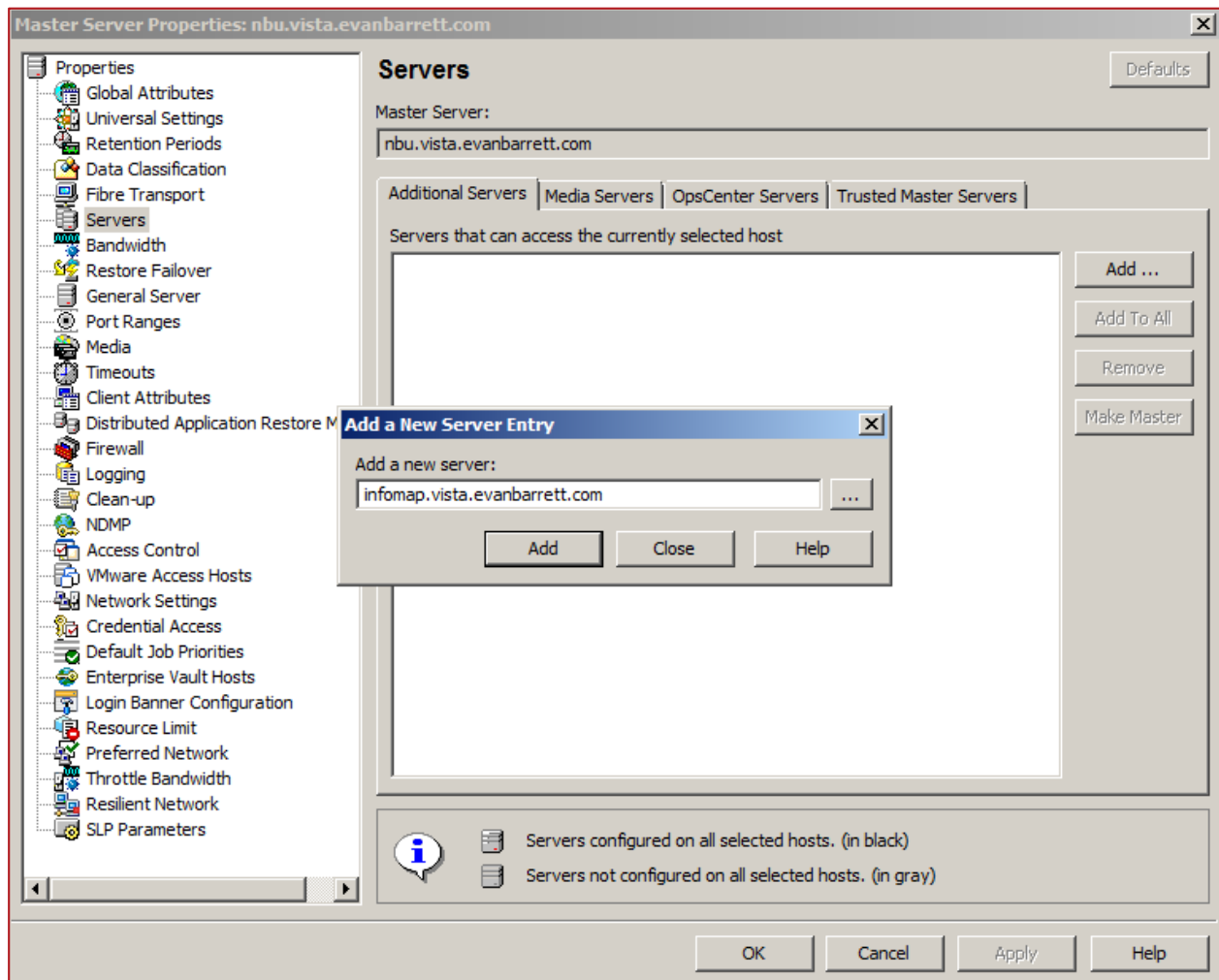


Figure 3 – Adding a server entry using the NetBackup Administration Console

Preparing Information Map

Before installing the Information Map Agent, it will be necessary to create at least one datacenter object within Information Map. This can be done by logging into Information Map and then navigating to Administration → Locations using the menu on the left side of the screen (as shown in Figure 4).

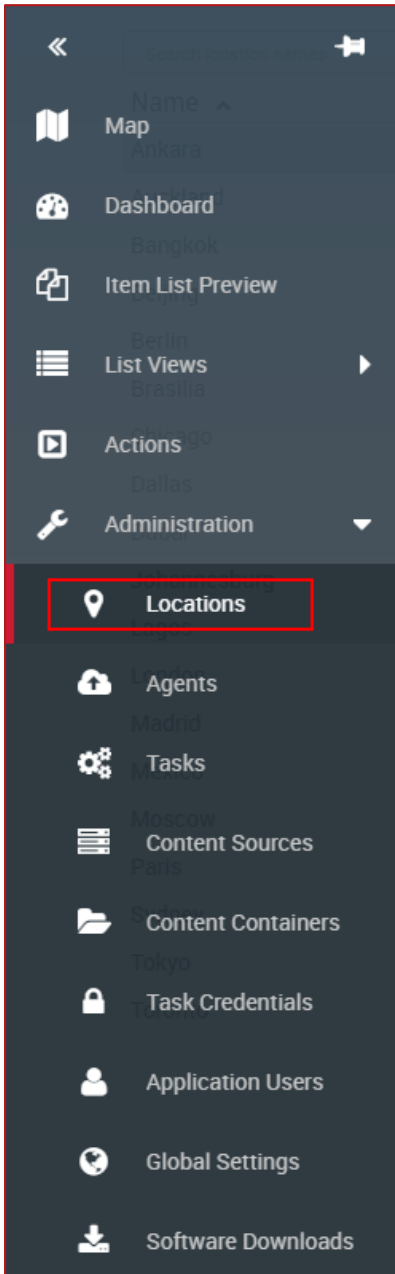


Figure 4 – Accessing Locations in Information Map

Once in the Locations section, click on the “New” button towards the bottom of the screen. Fill in the details for the datacenter (as shown in Figure 5) such as location and contact information. For automatic determination of content source location, it is important that all IP subnets within a location are added to the locations configuration. Click on Save once completed.

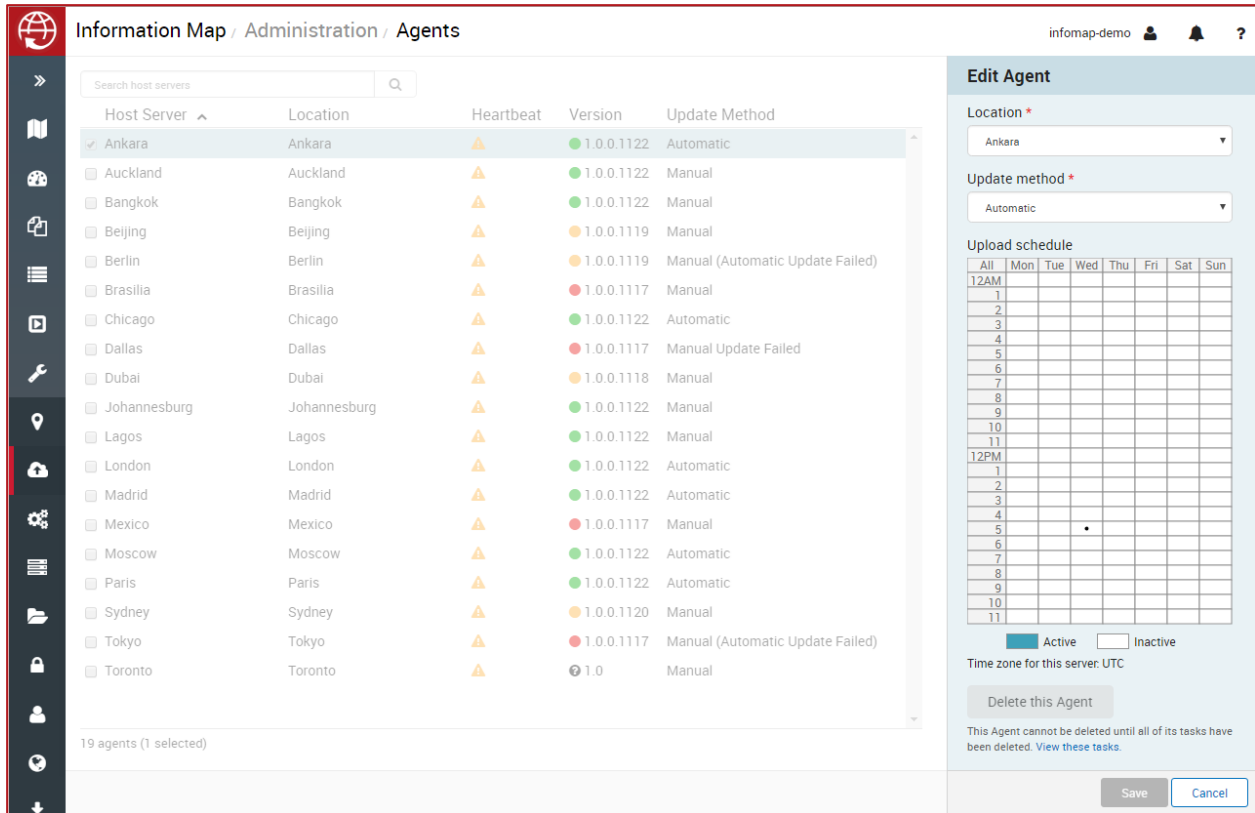
Figure 5 – Adding a New Location in Information Map

Installing the Information Map Agent

Installation of the Agent is a straight forward process. The administrator has the ability to specify in which directory the agent will reside. The data directory, which contains all collected data before it is sent to the fabric, can be configured in a separate directory. This directory should reside on a volume that has sufficient space and resides on high performance disk. The amount of disk space required will depend on how many NetBackup master servers will be monitored by the agent. See the Support Considerations section for more information.

Modifying the Agent Properties

An Information Map administrator can modify an Agent after the agent software has been configured and registered with Information Map. To modify an Agent, navigate to Administration → Agents on the menu on the left side of the Information Map web interface.



When in the Agents section, a list of all Agents will be displayed. Information such as host server, location (datacenter), heartbeat status, agent version, and update method will be shown.

Under the Version column, a simple “traffic light” status will be shown (red, amber, and green). Agent Servers that display an amber circle indicate that a newer version of the Agent is available and should be updated within ninety (90) days. An Agent that show a red circle indicates that the agent software version is over ninety (90) days old and is out of support and should be updated immediately to avoid suspension of metadata collection and upload to Information Map. Those Agents with a green circle are up to date and require no additional action from the administrator.

It should be noted that if an Agent is set to automatically update, the version of the agent software will always be up to date. This assumes that there are no communication issues between the Agent and Information Map.

The properties that can be modified for an Agent include:

- Location – Assign agent to another datacenter
- Update method – Determines of the agent software will be automatically or manually updated
- Upload schedule – Time blocks in which metadata can be uploaded to the cloud

Support considerations

NetBackup Support

The Information Map Agent works with the following versions of NetBackup:

- NetBackup 7.5 and later
- NetBackup Appliance versions 2.5 or later
- Supported backup policies
 - Standard
 - MS-Windows
 - NDMP
 - VMware
 - Hyper-V

Information Map Agent System Requirements:

- Windows 2012 or 2012R2
- Physical or virtual server
- The follow table outlines CPU, RAM, and disk space requirements:

Number of NetBackup Master Servers per Agent	Number of Cores	RAM	Disk Space
1	2	8 GB	100 GB
2	4	8 GB	200 GB
4	8	16 GB	250 GB

About Veritas:

Veritas Technologies LLC enables organizations to harness the power of their information, with solutions designed to serve the world's largest and most complex heterogeneous environments. Veritas works with 86 percent of Fortune 500 companies today, improving data availability and revealing insights to drive competitive advantage. More information is available at www.veritas.com.

For specific country offices and contact numbers, please visit our Web site: www.veritas.com

Veritas World Headquarters
500 East Middlefield Road
Mountain View, CA 94043 USA

+1 (650) 933 1000

© 2016 Veritas Technologies LLC. All rights reserved.

Veritas and the Veritas Logo are trademarks or registered trademarks of Veritas Technologies LLC or its affiliates in the U.S. and other countries. Other names may be trademarks of their respective owners.

This document is provided for informational purposes only and is not intended as advertising. All warranties relating to the information in this document, either express or implied, are disclaimed to the maximum extent allowed by law. The information in this document is subject to change without notice.