

Data Insight 4.5 Feature Briefing Expanded Data Sources Support

This document is about the new expanded data sources support introduced in Data Insight 4.5.

If you have any feedback or questions about this document please email them to IIG-TFE@symantec.com stating the document title.

This document is provided for informational purposes only. All warranties relating to the information in this document, either express or implied, are disclaimed to the maximum extent allowed by law. The information in this document is subject to change without notice. Copyright © 2014 Symantec Corporation. All rights reserved. Symantec, the Symantec Logo, and the Checkmark Logo are trademarks or registered trademarks of Symantec Corporation or its affiliates in the U.S. and other countries. Other names may be trademarks of their respective owners.





Feature Description

Data Insight 4.5 introduces support for three additional data sources: NetApp Cluster-mode (cDOT), EMC Isilon, and Windows 2012/2012 R2. Data Insight will be able to provide analysis and remediation on these platforms.



Business Value

As organizations adopt newer storage and operating system technologies, it will still be necessary to ensure data that resides on these platforms meet the organization's compliance policies. Data Insight will be able to assist customers that adopt these newer data sources.

Guided Tour

NetApp Cluster Mode (cDOT)

Requirements:

- NetApp ONTAP version 8.2 or later
- FPolicy configured for every Vserver in the ONTAP cluster
- The ONTAP Cluster management host accessibility from Collector
- Data Insight communication with CIFS server hosted within the ONTAP cluster
- Credentials for use by Data Insight

- The DataInsightFPolicyCMod service is installed on the Data Insight collector and configured (as shown in Figure 1)

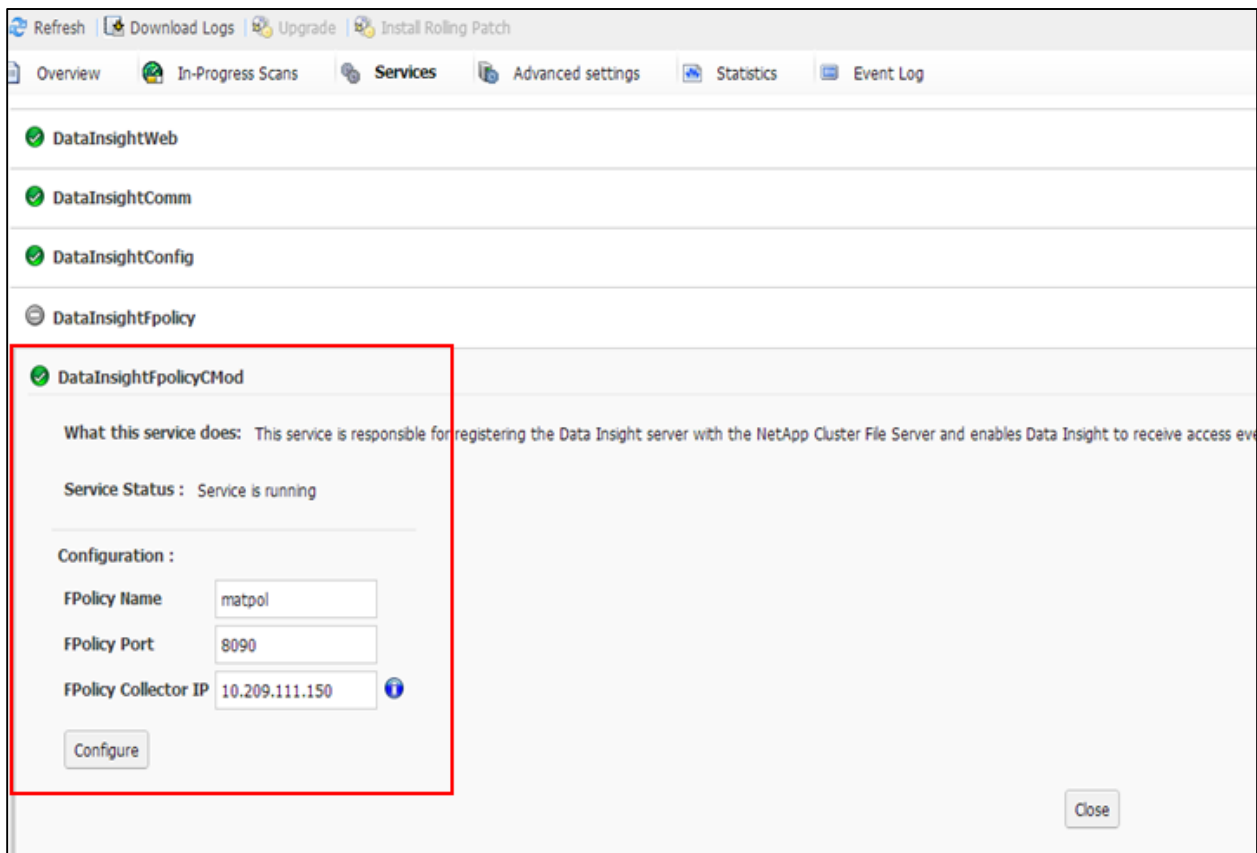


Figure 1 – Configuring the DataInsightFpolicyCMod Service

Once all the requirements have been met/installed, the NetApp cluster can be added to Data Insight using the DI Console. To add the cluster, the DI administrator clicks on **Settings -> Add New Filer -> NetApp Cluster File** server as shown in Figure 2.

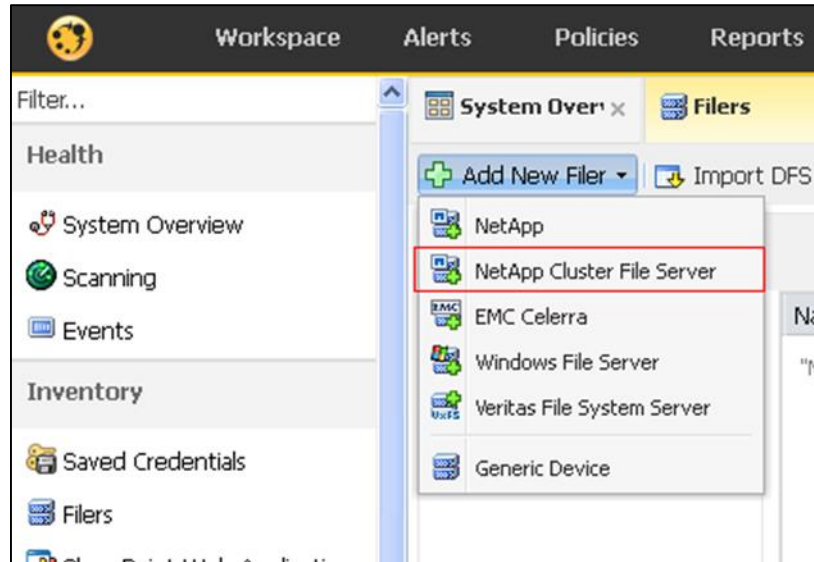


Figure 2 – Adding a NetApp Cluster File Server

The administrator will then need to configure other properties for file cluster as shown in Figure 3.

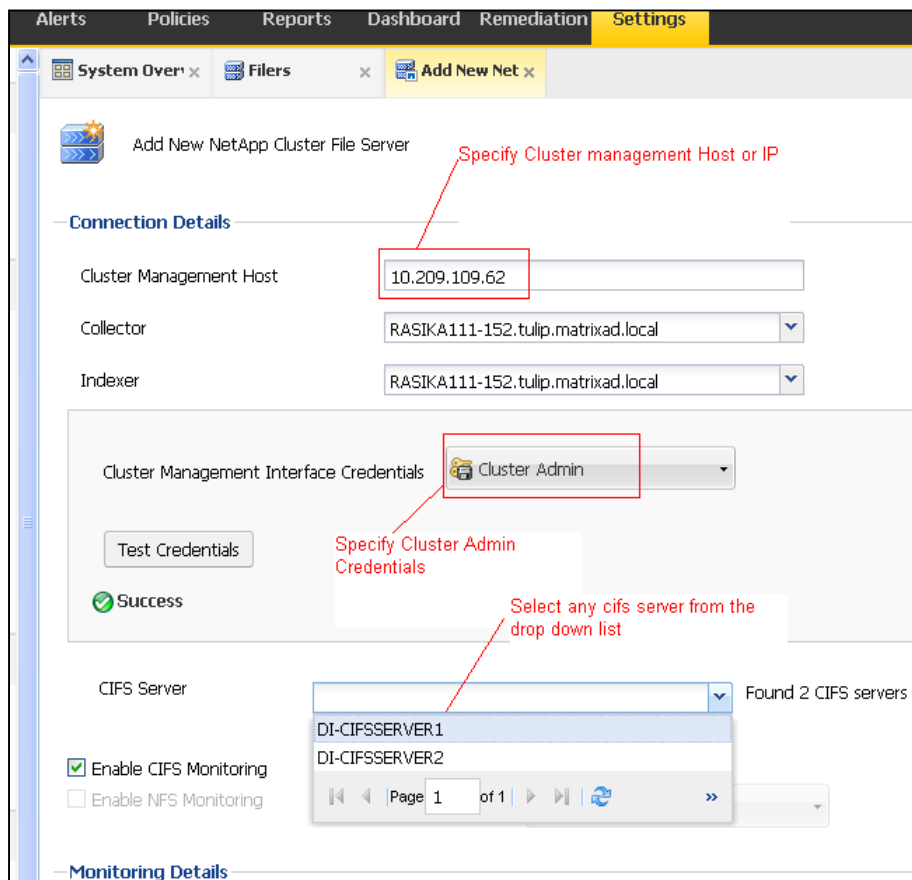


Figure 3 – Defining additional properties for a NetApp File Cluster

EMC Isilon

Requirements:

- EMC Isilon OneFS version 7.1 or later
- EMC CEE v6.1 or higher package
- Microsoft .NET 3 or 3.5 installed on the Data Insight Collector node
- Audit configuration on Isilon Cluster
- Credentials for use by Data Insight
- The DataInsightCelerra service is installed on the Data Insight Collector and configured (see Figure 4)

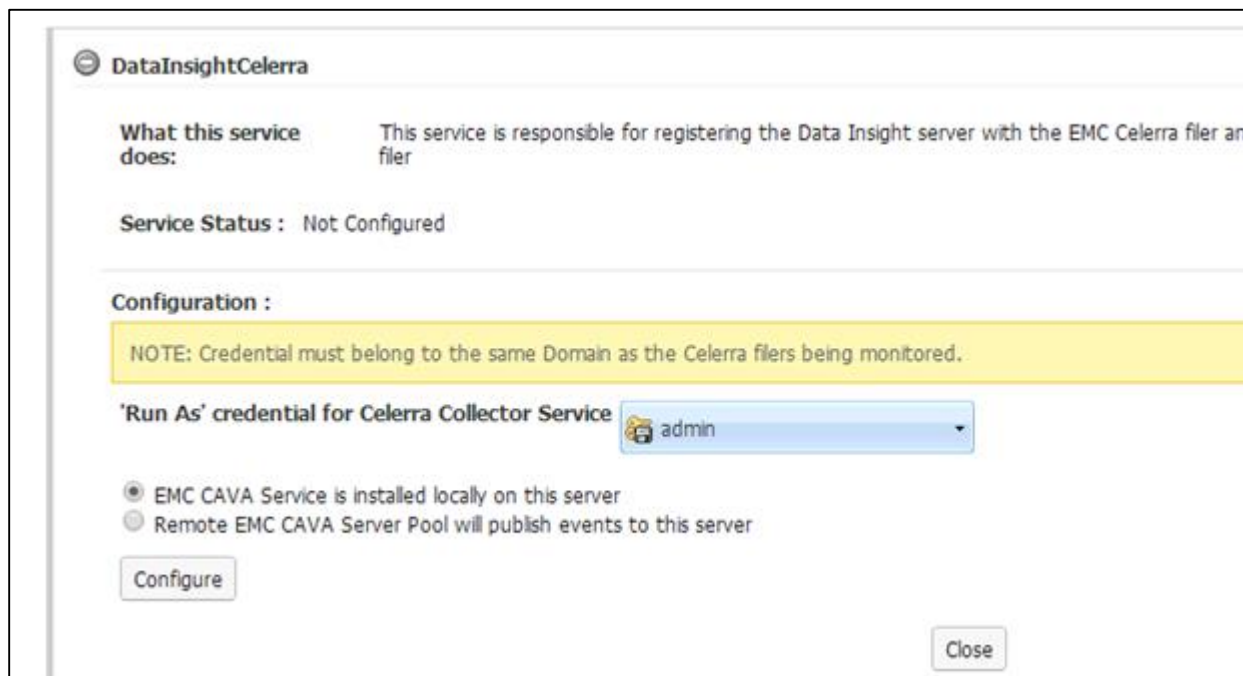


Figure 4 – Configuring the DataInsightCelerra service

Once all the requirements have been met/installed, the Isilon filer can be added to Data Insight using the DI Console. To add the file, the DI administrator clicks on **Settings -> Add New Filer -> EMC Isilon** as show in Figure 5.

Workspace Alerts Policies Reports Dashboard Remediation Settings

Filter...

Health

System Overview

Scanning

Events

Inventory

Saved Credentials

Files

SharePoint Web Applications

Directory Services

Containers

Data Insight Users

Data Insight Servers

Installation Status

Add New Isilon File

Enter storage cluster name configured under Isilon Audit page. Typically smartconnect or Isilon node FQDN.

Connection Details

Cluster Management Host: di-isilon.tulip.matrixad.local

Cluster Management Port: 8080

Collector: ANDYPERTEST01.tulip.matrixad.local

Indexer: ANDYPERTEST01.tulip.matrixad.local

Cluster Management Host Credentials: isilon

Test Credentials

Figure 5 – Defining additional properties for the Isilon filer

Windows 2012/2012 R2

Configuring Windows 2012 and 2012 R2 servers is similar to configuring Windows 2003 and 2008/2008 R2 data sources.

Licensing and Support Considerations

Licensing

The licensing of NetApp Clusters, EMC Isilon, and Windows 2012/2012 R2 is similar to that of other targeted platforms. Licenses can be bought on a per user or per terabyte basis

Support Considerations

Please refer to the Data Insight 4.5 release notes for further information on support for the new data sources.

About Symantec:

Symantec is a global leader in providing security, storage, and systems management solutions to help consumers and organizations secure and manage their information-driven world. Our software and services protect against more risks at more points, more completely and efficiently, enabling confidence wherever information is used or stored.

Headquartered in Mountain View, Calif., Symantec has operations in 40 countries. More information is available at www.symantec.com.

For specific country offices and contact numbers, please visit our Web site: www.symantec.com

Symantec Corporation
World Headquarters
350 Ellis Street
Mountain View, CA 94043 USA
+1 (650) 527 8000
+1 (800) 721 3934

Copyright © 2014 Symantec Corporation. All rights reserved. Symantec and the Symantec logo are trademarks or registered trademarks of Symantec Corporation or its affiliates in the U.S. and other countries. Other names may be trademarks of their respective owners.