

# Symantec™ Cluster Server 6.1 Agent for Sybase Installation and Configuration Guide - Solaris

# Symantec™ Cluster Server Agent for Sybase Installation and Configuration Guide

The software described in this book is furnished under a license agreement and may be used only in accordance with the terms of the agreement.

Product version: VCS 6.1

Document version: 6.1 Rev 2

## Legal Notice

Copyright © 2014 Symantec Corporation. All rights reserved.

Symantec, the Symantec Logo, the Checkmark Logo, Veritas, Veritas Storage Foundation, CommandCentral, NetBackup, Enterprise Vault, and LiveUpdate are trademarks or registered trademarks of Symantec Corporation or its affiliates in the U.S. and other countries. Other names may be trademarks of their respective owners.

The product described in this document is distributed under licenses restricting its use, copying, distribution, and decompilation/reverse engineering. No part of this document may be reproduced in any form by any means without prior written authorization of Symantec Corporation and its licensors, if any.

THE DOCUMENTATION IS PROVIDED "AS IS" AND ALL EXPRESS OR IMPLIED CONDITIONS, REPRESENTATIONS AND WARRANTIES, INCLUDING ANY IMPLIED WARRANTY OF MERCHANTABILITY, FITNESS FOR A PARTICULAR PURPOSE OR NON-INFRINGEMENT, ARE DISCLAIMED, EXCEPT TO THE EXTENT THAT SUCH DISCLAIMERS ARE HELD TO BE LEGALLY INVALID. SYMANTEC CORPORATION SHALL NOT BE LIABLE FOR INCIDENTAL OR CONSEQUENTIAL DAMAGES IN CONNECTION WITH THE FURNISHING, PERFORMANCE, OR USE OF THIS DOCUMENTATION. THE INFORMATION CONTAINED IN THIS DOCUMENTATION IS SUBJECT TO CHANGE WITHOUT NOTICE.

The Licensed Software and Documentation are deemed to be commercial computer software as defined in FAR 12.212 and subject to restricted rights as defined in FAR Section 52.227-19 "Commercial Computer Software - Restricted Rights" and DFARS 227.7202, "Rights in Commercial Computer Software or Commercial Computer Software Documentation", as applicable, and any successor regulations, whether delivered by Symantec as on premises or hosted services. Any use, modification, reproduction release, performance, display or disclosure of the Licensed Software and Documentation by the U.S. Government shall be solely in accordance with the terms of this Agreement.

Symantec Corporation  
350 Ellis Street  
Mountain View, CA 94043

<http://www.symantec.com>

# Technical Support

Symantec Technical Support maintains support centers globally. Technical Support's primary role is to respond to specific queries about product features and functionality. The Technical Support group also creates content for our online Knowledge Base. The Technical Support group works collaboratively with the other functional areas within Symantec to answer your questions in a timely fashion. For example, the Technical Support group works with Product Engineering and Symantec Security Response to provide alerting services and virus definition updates.

Symantec's support offerings include the following:

- A range of support options that give you the flexibility to select the right amount of service for any size organization
- Telephone and/or Web-based support that provides rapid response and up-to-the-minute information
- Upgrade assurance that delivers software upgrades
- Global support purchased on a regional business hours or 24 hours a day, 7 days a week basis
- Premium service offerings that include Account Management Services

For information about Symantec's support offerings, you can visit our website at the following URL:

[www.symantec.com/business/support/index.jsp](http://www.symantec.com/business/support/index.jsp)

All support services will be delivered in accordance with your support agreement and the then-current enterprise technical support policy.

## Contacting Technical Support

Customers with a current support agreement may access Technical Support information at the following URL:

[www.symantec.com/business/support/contact\\_techsupp\\_static.jsp](http://www.symantec.com/business/support/contact_techsupp_static.jsp)

Before contacting Technical Support, make sure you have satisfied the system requirements that are listed in your product documentation. Also, you should be at the computer on which the problem occurred, in case it is necessary to replicate the problem.

When you contact Technical Support, please have the following information available:

- Product release level
- Hardware information

- Available memory, disk space, and NIC information
- Operating system
- Version and patch level
- Network topology
- Router, gateway, and IP address information
- Problem description:
  - Error messages and log files
  - Troubleshooting that was performed before contacting Symantec
  - Recent software configuration changes and network changes

## Licensing and registration

If your Symantec product requires registration or a license key, access our technical support Web page at the following URL:

[www.symantec.com/business/support/](http://www.symantec.com/business/support/)

## Customer service

Customer service information is available at the following URL:

[www.symantec.com/business/support/](http://www.symantec.com/business/support/)

Customer Service is available to assist with non-technical questions, such as the following types of issues:

- Questions regarding product licensing or serialization
- Product registration updates, such as address or name changes
- General product information (features, language availability, local dealers)
- Latest information about product updates and upgrades
- Information about upgrade assurance and support contracts
- Information about the Symantec Buying Programs
- Advice about Symantec's technical support options
- Nontechnical presales questions
- Issues that are related to CD-ROMs or manuals

## Support agreement resources

If you want to contact Symantec regarding an existing support agreement, please contact the support agreement administration team for your region as follows:

Asia-Pacific and Japan	<a href="mailto:customercare_apac@symantec.com">customercare_apac@symantec.com</a>
Europe, Middle-East, and Africa	<a href="mailto:semea@symantec.com">semea@symantec.com</a>
North America and Latin America	<a href="mailto:supportsolutions@symantec.com">supportsolutions@symantec.com</a>

## Documentation

Product guides are available on the media in PDF format. Make sure that you are using the current version of the documentation. The document version appears on page 2 of each guide. The latest product documentation is available on the Symantec website.

<https://sort.symantec.com/documents>

Your feedback on product documentation is important to us. Send suggestions for improvements and reports on errors or omissions. Include the title and document version (located on the second page), and chapter and section titles of the text on which you are reporting. Send feedback to:

[doc\\_feedback@symantec.com](mailto:doc_feedback@symantec.com)

For information regarding the latest HOWTO articles, documentation updates, or to ask a question regarding product documentation, visit the Storage and Clustering Documentation forum on Symantec Connect.

<https://www-secure.symantec.com/connect/storage-management/forums/storage-and-clustering-documentation>

## About Symantec Connect

Symantec Connect is the peer-to-peer technical community site for Symantec's enterprise customers. Participants can connect and share information with other product users, including creating forum posts, articles, videos, downloads, blogs and suggesting ideas, as well as interact with Symantec product teams and Technical Support. Content is rated by the community, and members receive reward points for their contributions.

<http://www.symantec.com/connect/storage-management>

# Contents

Technical Support .....	4	
Chapter 1	Introducing the Symantec Cluster Server for Sybase .....	10
	About the Symantec Cluster Server for Sybase .....	10
	Supported software for the VCS agent for Sybase .....	11
	How the agent makes Sybase highly available .....	11
	How the Sybase and SybaseBk agents support intelligent resource monitoring .....	12
	About the Sybase agent functions .....	12
	Sybase agent functions .....	13
	SybaseBk agent functions .....	15
	Using the IPC Cleanup feature for the Sybase agent .....	17
	Monitoring options for the Sybase agent .....	18
	Monitoring Sybase instances running in Solaris Containers .....	19
	Action function for the VCS agent for Sybase .....	19
	Typical Sybase configuration in a VCS cluster .....	20
Chapter 2	Installing and configuring Sybase .....	22
	VCS requirements for installing Sybase .....	22
	Sybase installation directory .....	22
	SYBASE directory on shared disks .....	23
	System Group and User for Sybase home directory .....	23
	Database dbspaces .....	23
	Transparent TCP/IP failover .....	23
	Language settings for the Sybase agent .....	23
	Installing Sybase in a VCS environment .....	24
	Configuring Sybase for detail monitoring .....	24
Chapter 3	Installing, upgrading, and removing the agent for Sybase .....	27
	Before you install or upgrade the agent for Sybase .....	27
	Installing the agent for Sybase .....	28
	Disabling the agent for Sybase .....	30

	Removing the agent for Sybase .....	30
	Upgrading the agent for Sybase .....	31
Chapter 4	Configuring VCS service groups for Sybase .....	35
	About configuring service groups for Sybase .....	35
	Before configuring the service group for Sybase .....	36
	Importing the SybaseTypes.cf file .....	36
	Configuring the service groups for Sybase .....	38
	Configuring the service group for Sybase from Cluster Manager (Java console) .....	38
	Configuring the service group for Sybase using the command line .....	40
	Encrypting passwords for Sybase .....	42
	About setting up detail monitoring for the agent for Sybase .....	42
	Enabling detail monitoring for the agent for Sybase .....	43
	Disabling detail monitoring for the agent for Sybase .....	44
	Enabling and disabling intelligent resource monitoring (IMF) for agents .....	45
	Administering the AMF kernel driver .....	47
Chapter 5	Administering VCS service groups for Sybase .....	48
	About administering service groups for Sybase .....	48
	Bringing the Sybase service group online .....	48
	Taking the Sybase service group offline .....	49
	Switching the Sybase service group .....	49
	Modifying the Sybase service group configuration .....	49
	Viewing the agent log for Sybase .....	50
Appendix A	Resource type definitions for Sybase .....	51
	About the resource type and attribute definitions for Sybase .....	51
	Sybase resource type .....	51
	Type definition for the Sybase agent .....	52
	Attribute definitions for the Sybase agent .....	52
	SybaseBk resource type .....	61
	Type definition for the SybaseBk agent .....	61
	Attribute definitions for the SybaseBk agent .....	61
Appendix B	Sample configurations for Sybase .....	67
	About the sample configuration for the Sybase agent .....	67
	Resource dependency graph for the Sybase agent .....	67



Resource dependency for Sybase configured in Solaris zones .....	68
Sample configuration for agent for Sybase on Solaris systems .....	70
Sample main.cf files for Sybase ASE CE configurations .....	72
Sample main.cf for a basic Sybase ASE CE cluster configuration under VCS control with shared mount point on CFS for Sybase binary installation .....	73
Sample main.cf for a basic Sybase ASE CE cluster configuration with local mount point on VxFS for Sybase binary installation .....	77
Sample main.cf for a primary CVM VVR site .....	81
Sample main.cf for a secondary CVM VVR site .....	88
Sample configuration for the Sybase agent in Solaris zones .....	94
Appendix C Changes introduced in previous releases .....	95
Changes introduced in the previous release .....	95
Index .....	98

# Introducing the Symantec Cluster Server for Sybase

This chapter includes the following topics:

- [About the Symantec Cluster Server for Sybase](#)
- [Supported software for the VCS agent for Sybase](#)
- [How the agent makes Sybase highly available](#)
- [How the Sybase and SybaseBk agents support intelligent resource monitoring](#)
- [About the Sybase agent functions](#)
- [Monitoring options for the Sybase agent](#)
- [Action function for the VCS agent for Sybase](#)
- [Typical Sybase configuration in a VCS cluster](#)

## About the Symantec Cluster Server for Sybase

The Symantec Cluster Server for Sybase brings the configured Sybase servers online, monitors them, and takes them offline.

For Sybase ASE enterprise edition, the following agents work together to make Sybase highly available in a VCS cluster.

- Agent for SQL Server- Sybase
- Agent for Backup Server- SybaseBk

The agents include type declarations and agent executables, and are represented with Sybase and SybaseBk resource types, respectively.

For Sybase ASE cluster edition, the VCS agent for Sybase makes Sybase adaptive server highly available in a VCS cluster. The VCS agent for Sybase backup server (SybaseBk agent) is not supported for Sybase ASE cluster edition.

---

**Note:** For ASE Enterprise Edition, the VCS agent for Sybase provides "active/passive" support. For "active/active" support for ASE Enterprise Edition, contact Sybase for their agent.

---

## Supported software for the VCS agent for Sybase

Refer to the *Symantec Cluster Server Release Notes* for information on supported software and platform versions.

Refer to the Sybase agent support matrix at <http://www.symantec.com/business/support/index?page=content&id=DOC5080>.

## How the agent makes Sybase highly available

The Symantec Cluster Server agent for Sybase continuously monitors the Sybase database and SybaseBk processes to verify whether they function properly.

The agent for Sybase can perform different levels of monitoring and different actions which you can configure.

- Primary or Basic monitoring: In the basic monitoring mode, the agent monitors the configured Sybase server process, and fails over or restarts the group during an application failure.
- Detail monitoring: In the optional detail monitoring mode, the agent detects application failure if it cannot perform a transaction in the test table in the Sybase database server.
- Intelligent monitoring framework (IMF): The Sybase agent is IMF-aware and uses asynchronous monitoring framework (AMF) kernel driver for resource state change notifications.

See "[How the Sybase and SybaseBk agents support intelligent resource monitoring](#)" on page 12.

For Sybase cluster edition, the agent uses the Sybase-provided utility, `qrmutil`, to know if the status of the instance is up or down. If `qrmutil` reports the status as failure pending, the agent reboots the node and the instance is automatically started again.

When the Sybase agent detects that the configured Sybase server is not running on a system, based on the value of `OnlineRetryLimit` attribute of the Sybase server group, the service group is restarted on the same system on which the group faulted.

For ASE Enterprise edition when the agent detects that the configured Sybase server is not running on a system, the Sybase service group is failed over to the next available system in the service group's `SystemList`. The configured Sybase servers are started on the new system, thus ensuring high availability for the Sybase server and data.

## How the Sybase and SybaseBk agents support intelligent resource monitoring

With intelligent monitoring framework (IMF), VCS supports intelligent resource monitoring in addition to the poll-based monitoring. Poll-based monitoring polls the resources periodically whereas intelligent monitoring performs asynchronous monitoring.

You can enable or disable the intelligent resource monitoring functionality of the VCS agents for Sybase and SybaseBk using `haimfconfig` script or manually.

See [“Enabling and disabling intelligent resource monitoring \(IMF\) for agents”](#) on page 45.

When an IMF-enabled agent starts up, the agent initializes the asynchronous monitoring framework (AMF) kernel driver. After the resource is in a steady state, the agent registers the details that are required to monitor the resource with the AMF kernel driver. For example, the Sybase agent registers the PIDs of the processes with the AMF kernel driver. The agent's `imf_getnotification` function waits for any resource state changes. When the AMFkernel driver module notifies the `imf_getnotification` function about a resource state change, the agent framework runs the monitor agent function to ascertain the state of that resource. The agent notifies the state change to VCS which takes the appropriate action.

See the *Symantec Cluster Server Administrator's Guide* for more information.

## About the Sybase agent functions

The functions an agent performs are called entry points. The Symantec agent for Sybase can perform different operations or functions on the database. These functions are online, offline, monitor, clean, and action.

Review the functions for the following agents that are part of the Symantec Cluster Server agent suite for Sybase:

- Sybase (SQL server) agent functions  
 See “[Sybase agent functions](#)” on page 13.
- SybaseBk (Backup Server) agent functions  
 See “[SybaseBk agent functions](#)” on page 15.

## Sybase agent functions

The agent for Sybase starts a Sybase ASE dataserer, monitors the server processes, shuts down the server, and restarts the server processes..

The Sybase agent is IMF-aware.

[Table 1-1](#) lists the Sybase agent for SQL server functions.

**Table 1-1** Sybase agent functions

Agent function	Description
Online	<p>Starts the Sybase ASE dataserer by using the following command.</p> <pre>startserver -f \$SYBASE/\$SYBASE_ASE/install/RUN_\$Server</pre> <p>where \$Server is the instance_name, and \$SYBASE/\$SYBASE_ASE/install/RUN_\$Server is the default location of the Run server file. If you specify the value of the Run_ServerFile attribute, then the value that you specify is used instead of the default location.</p> <p>If the WaitForRecovery attribute is enabled, the agent waits either till recovery has been completed and all databases that can be made online are brought online. The agent queries the recovery status by connecting to the isql session. The OnlineTimeout attribute must be set to a sufficiently large value so that the recovery completes before the OnlineTimeout is reached.</p> <p>By default, the WaitForRecovery attribute is not enabled.</p> <p>If the interfaces file location is specified using the interfaces_File attribute, agent uses [-I interfaces file] option while connecting to the isql session.</p> <p>When DelayAfterOnline attribute is set, the monitor function is invoked after completion of online function, and after the number of seconds specified in DelayAfterOnline attribute have elapsed.</p>

**Table 1-1** Sybase agent functions (*continued*)

Agent function	Description
Monitor	<p>In the basic monitoring mode, agent scans the process table for the dataserver process. In the detail monitoring mode, agent runs the script that is specified in MonScript as an option.</p> <p>The agent uses the Sybase provided utility, <code>qrmutil</code>, to know if the status of the instance is up or down. If <code>qrmutil</code> reports the status as failure pending, the agent reboots the node and the instance is automatically started again.</p> <p>See <a href="#">“Monitoring options for the Sybase agent”</a> on page 18.</p>
Offline	<p>Stops the Sybase SQL server by using the <code>isql</code> command in the following manner.</p> <p>If interfaces file location is specified using the <code>interfaces_File</code> attribute, agent uses the specified file while connecting to <code>isql</code> session.</p> <p>The agent first executes the <code>shutdown with wait</code> command.</p> <p>Sybase agent uses the <code>timeout</code> option during shutdown of Sybase dataserver if this option is supported.</p> <p>For Sybase ASE Enterprise edition the timeout option for shutdown command is supported for versions 12.5.4 and 15.0.2 onwards. If this timeout option is not supported for Sybase ASE Enterprise edition, the offline script waits in a loop till the dataserver completely stops. The agent waits for up to the <code>OfflineTimeout</code> duration. If the process is still running, the offline script issues a <code>shutdown with nowait</code> command.</p> <p>For Sybase ASE Cluster edition the timeout option for shutdown command is supported from versions 15.5 ESD #1 onwards. If the timeout option is not supported for Sybase ASE Cluster edition, the offline script waits in a loop till the dataserver completely stops. The agent waits for up to the <code>OfflineTimeout</code> duration. If the process is still running, the offline script kills it.</p> <p>When <code>DelayAfterOffline</code> attribute is set, the monitor function is invoked after completion of offline function and after the number of seconds specified in <code>DelayAfterOffline</code> attribute have elapsed.</p>

**Table 1-1** Sybase agent functions (*continued*)

Agent function	Description
imf_init	Initializes the agent to interface with the AMF kernel driver, which is the IMF notification module for Sybase agent. This function runs when the agent starts up.
imf_register	Registers or unregisters resource entities with the AMF kernel module. This function runs for each resource after the resource goes into steady state (online or offline).
imf_getnotification	Gets notification about resource state changes. This function runs after the agent initializes with the AMF kernel module. This function continuously waits for notification and takes action on the resource upon notification.
Clean	<p>Forcefully stops the Sybase SQL server by using the <code>isql</code> command in the following manner.</p> <p>The agent first executes the <code>shutdown with wait</code> command.</p> <p>For Sybase ASE Enterprise edition, if the <code>isql</code> command fails, the clean script executes the <code>shutdown with nowait</code> command. If the process does not respond to the <code>shutdown</code> command, the agent kills the Sybase dataserver process.</p> <p>For Sybase ASE Cluster edition, if the <code>shutdown with wait</code> command does not stop the dataserver, the agent directly proceeds to kill the dataserver process.</p>
Action	<p>Performs the predefined actions on a resource.</p> <p>See <a href="#">"Action function for the VCS agent for Sybase"</a> on page 19.</p>

## SybaseBk agent functions

The agent for SybaseBk starts a Sybase Backup server, monitors the server process, and shuts down the server.

The SybaseBk agent is IMF-aware.

[Table 1-2](#) lists the Sybase agent for Backup server functions.

**Table 1-2** Sybase agent for Backup server functions

Agent operation	Description
Online	<p>Starts the Sybase Backup server by using the following command.</p> <pre>startserver -f \$SYBASE/\$SYBASE_ASE/ install/RUN_\$BackupServer</pre> <p><b>Where</b>  \$SYBASE/\$SYBASE_ASE/install/RUN_\$BackupServer is the default location of the Run server file. If you specify the value of the Run_ServerFile attribute, then the value that you specify is used instead of the default location.</p>
Monitor	<p>Scans the process table for the backupserver process.</p>
Offline	<p>Stops the Sybase Backup server by using the <code>isql</code> command in the following manner.</p> <p>If interfaces file location is specified using the <code>interfaces_File</code> attribute, agent uses the specified file while connecting to <code>isql</code> session.</p> <p>The agent first executes the command <code>shutdown SYB_BACKUP with wait</code>. If this command fails, the offline script executes <code>shutdown SYB_BACKUP with nowait</code>.</p>
Clean	<p>Forcefully stops the Sybase Backup server by using the <code>isql</code> command in the following manner.</p> <p>The agent first executes the command <code>shutdown SYB_BACKUP with wait</code>. If this command fails, the clean script executes <code>shutdown SYB_BACKUP with nowait</code>.</p> <p>If the process does not respond to the <code>shutdown</code> command, the agent scans the process table for the processes that are associated with the configured Sybase Backup server and kills them.</p>
imf_init	<p>Initializes the agent to interface with the AMF kernel driver, which is the IMF notification module for SybaseBk agent. This function runs when the agent starts up.</p>
imf_register	<p>Registers or unregisters resource entities with the AMF kernel module. This function runs for each resource after the resource goes into steady state (online or offline).</p>



**Table 1-2** Sybase agent for Backup server functions (*continued*)

Agent operation	Description
imf_getnotification	Gets notification about resource state changes. This function runs after the agent initializes with the AMF kernel module. This function continuously waits for notification and takes action on the resource upon notification.

## Using the IPC Cleanup feature for the Sybase agent

When the Adaptive Server starts, it creates shared memory files in \$SYBASE to store information about the shared memory segments that it uses. Adaptive Server start-up parameter -M can be used to change the location of directory that stores shared memory files. The start-up parameter -M should be updated in RUN\_\$\$Server file.

If the Sybase home directory is unmounted, the Sybase clean script cannot access the shared memory files and does not clean the IPC resources that are allocated by the Sybase processes. Hence, the agent requires shared memory files to be present in the following directory on local system `/var/tmp/sybase_shm/$Server`.

In the \$SYBASE/\$SYBASE\_ASE/install directory, edit the RUN\_\$\$Server file. Change the location of the directory that stores shared memory files to `/var/tmp/sybase_shm/$Server` using the -M option.

For example, the file RUN\_Sybase\_Server resembles the following before the change:

```
/home/sybase/ASE-15_0/bin/dataserver \  
  
-sSybase_Server \  
  
-d/home/sybase/data/master.dat \  
  
-e/home/sybase/ASE-15_0/install/Sybase_Server.log \  
  
-c/home/sybase/ASE-15_0/Sybase_Server.cfg \  
  
-M/home/sybase/ASE-15_0 \  

```

After the replacement, the file resembles:

```
/home/sybase/ASE-15_0/bin/dataserver \  
  
-sSybase_Server \  

```

```
-d/home/sybase/data/master.dat \  
  
-e/home/sybase/ASE-15_0/install/Sybase_Server.log \  
  
-c/home/sybase/ASE-15_0/Sybase_Server.cfg \  
  
-M/var/tmp/sybase_shm/Sybase_Server \  

```

Here Sybase\_Server is the name of the Adaptive server.

---

**Note:** Make sure you create the /var/tmp/sybase\_shm/Sybase\_Server directory with proper permissions.

---

## Monitoring options for the Sybase agent

The VCS agent for Sybase provides two levels of application monitoring: basic and detail.

In the basic monitoring mode, the agent for Sybase monitors the Sybase dataserver processes to verify whether they are running.

For Sybase cluster edition, the agent uses `qrmutil` utility that Sybase provides to get the status of the Sybase instance. If the state returned by `qrmutil` utility is 'failure pending', the agent panics the node. When the Sybase agent detects that the configured Sybase server is not running on a system, based on the value of the `OnlineRetryLimit` attribute of the Sybase service group, the service group is restarted on the same system on which the group faulted.

For example:

```
# qrmutil --quorum_dev=/quorum/quorum.dat --monitor=ase1  
Executing 'monitor' command for instance 'ase1'  
Instance 'ase1' has a failure pending.  
# echo $?  
99
```

In this example instance 'ase1' has a failure pending state. The agent will panic the node running the instance 'ase1'. The node will automatically rejoin the cluster after reboot.

In the detail monitoring mode, the agent performs a transaction on a test table in the database to ensure that Sybase server is functioning properly. The test table should be created by the user, and the table is specified in the attribute `Table` for

the Sybase agent. The agent uses this test table for internal purposes. Symantec recommends that you do not perform any other transaction on the test table.

See “[About setting up detail monitoring for the agent for Sybase](#)” on page 42.

For the Sybase ASE Enterprise edition, when the agent detects that the configured Sybase server is not running on a system, the Sybase service group is failed over to the next available system in the service group’s SystemList. The configured Sybase servers are started on the new system, thus ensuring high availability for the Sybase server and data.

## Monitoring Sybase instances running in Solaris Containers

VCS provides high availability to applications running in non-global zones by extending the failover capability to zones. VCS is installed in a global zone and all VCS agents and engine components run in the global zone. For applications running within non-global zones, agents run entry points inside the zones. If a zone configured under VCS control faults, VCS fails over the entire service group containing the zone.

For the Sybase ASE Enterprise edition, the VCS agent for Sybase is zone-aware and can monitor Sybase instances running in non-global zones.

---

**Note:** For Sybase ASE Cluster edition, the VCS agent for Sybase provides high availability to Sybase dataserver in global zone.

---

For more information on using zones in your VCS environment, refer to the *Symantec Cluster Server Administrator’s Guide*.

## Action function for the VCS agent for Sybase

The agent for Sybase supports the Action function, which enables you to perform predefined actions on a resource.

To perform an action on a resource, type the following command:

```
# hares -action res token [-actionargs arg1 ...] \  
[-sys system] [-clus cluster]
```

You can also add custom actions for the agent.

For more information, refer to the *Symantec Cluster Server Agent Developer’s Guide*.

[Table 1-3](#) describes the agent’s predefined action.

**Table 1-3** Predefined agent action

Action	Description
checkpoint_all	Performs "checkpoint all" for the Sybase dataserver by connecting to isql session.  <b>Note:</b> The checkpoint_all action function is not applicable for Sybase Cluster Edition.

## Typical Sybase configuration in a VCS cluster

In a typical configuration, VCS is configured in a two node cluster. The Sybase data is installed on shared disks. The Sybase server binaries can be installed locally on both nodes or on shared disks. The agent for Sybase is installed on both the nodes. The shared disks can be managed using Veritas Volume Manager (VxVM).

Figure 1-1 illustrates a sample configuration in which the Sybase servers, including binaries and data are installed completely on shared disks or shared cluster disk groups managed using VxVM.

**Figure 1-1** Sybase binaries and data on shared disks

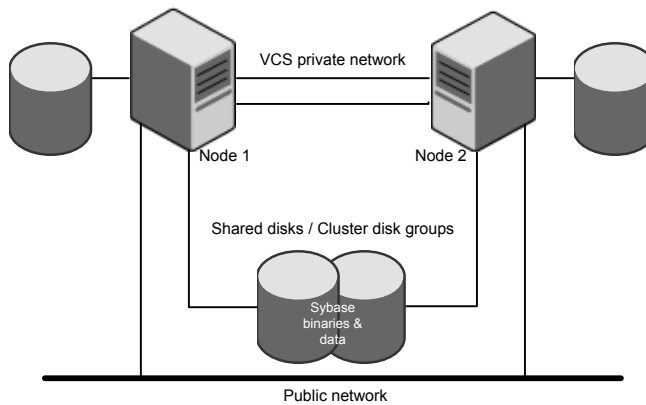
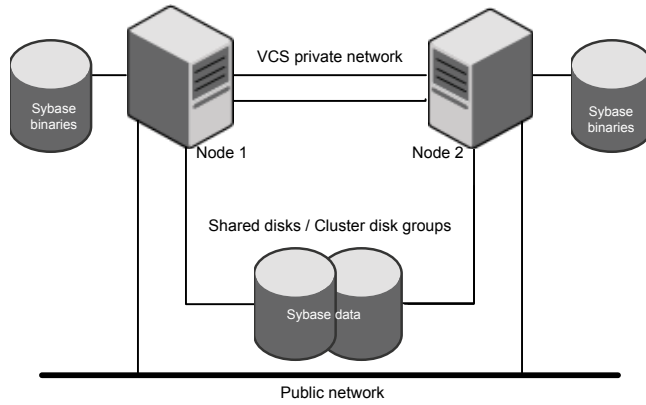


Figure 1-2 illustrates a sample configuration in which Sybase binaries are installed locally on each node in the cluster and the Sybase data is on shared disks or shared cluster disk groups managed using VxVM.

**Figure 1-2** Binaries on local disk and Sybase data on shared disks



# Installing and configuring Sybase

This chapter includes the following topics:

- [VCS requirements for installing Sybase](#)
- [Installing Sybase in a VCS environment](#)
- [Configuring Sybase for detail monitoring](#)

## VCS requirements for installing Sybase

Review the following requirements before you install Sybase in a VCS cluster. Before installing Sybase, make sure that the systems in the cluster have adequate resources to run Sybase and VCS.

### Sybase installation directory

The Sybase installation directory can be located on a local disk or a shared storage.

Review the following prerequisites:

- If the Sybase binaries are installed on a local disk, verify that the installation path is same on all the nodes in the cluster. Make sure the Sybase configuration files are identical on all the nodes in the cluster.
- If the Sybase binaries are installed on shared disks, make sure the mount points for the shared disks are same on all the nodes. The Sybase installation directory is specified by the environment variable \$SYBASE. Create the same \$SYBASE mount points on each system.

## SYBASE directory on shared disks

All database devices, including master devices, sybsemprocs, and information about Sybase user must be located on shared disks. If the database devices are created on file systems, the file systems must also be located on shared disks. Create the same file system mount points on each system to access the shared disks.

For Sybase ASE cluster edition, use Storage Foundation clustered file system (SFCFS) for the Sybase ASE quorum device.

## System Group and User for Sybase home directory

Make sure you have a system group and user, with the same name and ID, on all cluster nodes. Also, the system user should have the ownership of the Sybase home directory on the shared disk. Type the following commands:

```
# groupadd -g group_id group_name
# useradd -u user_id -g group_name user_name
# chown -R user_name:group_name $SYBASE
```

## Database dbspaces

If you use shared disks for dbspaces, change the permissions, or access mode on the disk groups that store the Sybase data. Change the permissions for sybase to 660.

For example, if you use Veritas Volume Manager, type

```
# vxedit -g diskgroup_name set group=dba\  
user=sybase mode=660 volume_name
```

## Transparent TCP/IP failover

For Sybase server failover to be transparent to Sybase clients, create an IP address as part of the Sybase service group. This IP address must match the dataserver and backup server entries in the \$SYBASE/interfaces file.

For information on the format for adding entries to the \$SYBASE/interfaces file, refer to the Sybase documentation.

## Language settings for the Sybase agent

For the VCS agent for Sybase to function with the desired locale, make sure that the Sybase installation has the correct localization files. For example, if the Sybase

server requires 'LANG=en\_US.UTF-8' environment variable, verify that the localization files corresponding to language 'en\_US.UTF-8' are installed with Sybase.

Also, edit the file `$VCS_HOME/bin/vcsenv` to contain the following:

```
LANG=en_US.UTF-8;export LANG
```

This change affects all the agents that are configured on the nodes.

## Installing Sybase in a VCS environment

For information on how to install Sybase, refer to Sybase documentation.

## Configuring Sybase for detail monitoring

This section describes the tasks to be performed to configure a Sybase server for detail monitoring.

See [“About setting up detail monitoring for the agent for Sybase”](#) on page 42.

---

**Note:** The steps that are described here are specific to the sample script, `SqlTest.pl`, provided with the agent. If you use a custom script for detail monitoring, you must configure the Sybase database accordingly.

---

Perform these steps only once in a Sybase cluster.

### To configure Sybase for detail monitoring

- 1 Source the `SYBASE.sh` file or `SYBASE.csh` file (depending on the user shell) to set the `$SYBASE` and `$SYBASE_ASE` environment variables.
- 2 Start the Sybase server.

```
# startserver -f ./SYBASE/$SYBASE_ASE/install/RUN_server_name
```

- 3 Start the Sybase client on any cluster node.

```
# isql -Usa -SSYBASE_SERVER_NAME
```

Enter the administrator password when prompted to do so.

- 4 Connect to the master database.

```
# use master  
# go
```



**5** Create a Sybase user account.

```
# sp_addlogin user_name, password
# go
```

The detail monitor script should use this account to make transactions on the database.

**6** Create a database.

```
# create database database_name
# go
```

The detail monitor script should make transactions on this database.

**7** If required, restrict the size of the log file for the database.

```
# sp_dboption database_name, "trunc log on chkpt", true
# go
```

**8** Connect to the database that is created in step 6.

```
# use database_name
# go
```

**9** Associate the user created in step 5 with the database created in step 6.

```
# sp_adduser user_name
# go
```

**10** Change the user to the one created in step 5.

```
# setuser "user_name"
# go
```

**11** Create a table in the database.

```
# create table table_name (lastupd datetime)
# go
```

The detail monitor script should make transactions on this table.

If you use the SqlTest.pl for detail monitoring, make sure you create a table with a lastupd field of type datetime.

**12** Verify the configuration by adding an initial value to the table.

```
# insert into table_name (lastupd) values (getdate())  
# go
```

**13** Exit the database.

```
# exit
```

# Installing, upgrading, and removing the agent for Sybase

This chapter includes the following topics:

- [Before you install or upgrade the agent for Sybase](#)
- [Installing the agent for Sybase](#)
- [Disabling the agent for Sybase](#)
- [Removing the agent for Sybase](#)
- [Upgrading the agent for Sybase](#)

## Before you install or upgrade the agent for Sybase

Ensure that you meet the following prerequisites to install the VCS agent for Sybase:

- Verify that VCS is installed and configured. If required, review the *Symantec Cluster Server Installation Guide*.
- Verify that Sybase is installed and configured on all cluster nodes on which you will install the agent. Review the Sybase documentation for more information. See [“VCS requirements for installing Sybase”](#) on page 22.
- Verify that the sybase account is valid and identical on all cluster systems that will run Sybase. Verify that the sybase user account has permissions to execute Sybase binaries. See [“System Group and User for Sybase home directory”](#) on page 23.

- For Solaris 10, Sybase agent uses the `/usr/ucb/ps axwwl` command to get the long process command line of the sybase server processes. Please verify that `/usr/ucb/ps` is available on Solaris 10 for Sybase agent.
- For Solaris 11, Sybase agent uses the `/usr/bin/ps axwwl` command to get the long process commandline of the sybase server processes. Please verify that `/usr/bin/ps` is available on Solaris 10 for Sybase agent.

## Installing the agent for Sybase

The agent binaries for Symantec Cluster Server agent for Sybase are a part of the VRTSvcsea package. The VRTSvcsea package is already installed if you chose to install all packages or recommended packages during VCS installation. You must manually install the VRTSvcsea package if you installed minimal packages during VCS installation. For Sybase ASE cluster edition, the VCS product installer installs the Sybase agent VRTSvcsea package along with other components

You can also install the Symantec Cluster Server agent for Sybase from the product disc.

Install the agent for Sybase on each node in the cluster.

### To install the agent on Solaris systems

- 1 Log in as superuser.
- 2 Make sure that the agent is not already installed.

Navigate to `/opt/VRTSagents/ha/bin` and list the contents of the directory. If the command returns the VCS agents for Sybase, you can skip this procedure.

- 3 Create a temporary directory for installation.

```
# mkdir /tmp/install
```

- 4 Insert the software disc into the system's disc drive.

- If you are running Solaris volume-management software, the software automatically mounts the disc as `/cdrom/cdrom0`. Type the following to go to the location.

```
# cd /cdrom
```

- If you are not running Solaris volume-management software, you must mount the disc manually. For example,

```
# mount -F hsfs -o ro /dev/dsk/c0t6d0s2 /cdrom
```

In this example, `/dev/dsk/c0t6d0s2` is the default for the disc drive.

After the disc is mounted, type the following command to go to the location.

```
# cd /cdrom
```

- 5 To navigate to the directory that contains the packages, and then install the agent, run the following commands:

```
# cd pkgs
```

---

**Caution:** The VRTSvcsea package includes the agent binaries for the Sybase agent. The package also installs the VCS agents for DB2 and Oracle.

---

```
# pkgadd -d VRTSvcsea.pkg
```

- 6 Copy the file SybaseTypes.cf from /etc/VRTSagents/ha/conf/Sybase/ directory to /etc/VRTSvcscs/conf/config directory.

### To install the Japanese language pack on Solaris systems

- 1 After you have installed the agent, insert the "Language" disc into a drive connected to the system.
  - If you are running Solaris volume-management software, the software automatically mounts the disc as /cdrom/cdrom0. Type the following to go to the location.

```
# cd /cdrom
```

- If you are not running Solaris volume-management software, you must mount the disc manually. For example:

```
# mount -F hsfs -o ro /dev/dsk/c0t6d0s2 /cdrom
```

Where, in this example, /dev/dsk/c0t6d0s2 is the default for the disc drive. After the disc is mounted, type the following commands to go to the location.

```
# cd /cdrom
```

- 2 Install the Japanese package.

```
# pkgadd -d VRTSjacse.pkg
```

## Disabling the agent for Sybase

To disable the agent on a system, you must first change the Sybase service group to an OFFLINE state. You can stop the application completely, or switch the service group to another system.

### To disable the agent

- 1 Determine if the service group is online. At the prompt, type:

```
# hagr -state service_group -sys system_name
```

- 2 If the service group is online, switch the service group to another system or take it offline. At the prompt, type:

```
# hagr -switch service_group -to system_name
```

Or

```
# hagr -offline service_group -sys system_name
```

- 3 Stop the agent on the system. At the prompt, type:

```
# haagent -stop Sybase -sys system_name  
# haagent -stop SybaseBk -sys system_name
```

- 4 When you get the message "Please look for messages in the log file," check the file `/var/VRTSvcS/log/engine_A.log` for a message confirming the agent has stopped.

You can also use the `ps` command to verify that the agent has stopped.

- 5 When the agent has stopped, you can remove the system, the service group, or the resource type from the VCS configuration.

For more information, refer to the chapter on reconfiguring VCS from the command line in *Symantec Cluster Server Administrator's Guide*.

## Removing the agent for Sybase

This section provides steps to remove the agent from the cluster.

---

**Warning:** The VRTSvcsea package includes the VCS agents for Oracle, Sybase, and DB2. So, the following procedure to remove the VCS agent for Sybase removes all the other agents also.

---

**To remove the agent for Sybase**

- 1 Take the Sybase and SybaseBk resources offline.
- 2 Stop the agent for Sybase.

```
# haagent -stop Sybase -sys system_name
```

Perform this step on all nodes on which the agent for Sybase is running.

- 3 Stop the agent for SybaseBk.

```
# haagent -stop SybaseBk -sys system_name
```

Perform this step on all nodes on which the agent for SybaseBk is running.

- 4 Type the following command to remove the agent from all nodes in the cluster. Answer prompts accordingly.

```
# pkgrm VRTSvcsea
```

If you installed the Japanese language package, type the following command:

```
# pkgrm VRTSjacse
```

## Upgrading the agent for Sybase

This section describes the procedure to upgrade the VCS agent for Sybase in a Symantec Cluster Server (VCS) cluster. Execute the following steps on each node of the VCS cluster.

---

**Note:** You can upgrade the VCS agent for Sybase from versions 5.0, 5.1, 6.0.1, to 6.1.0. See [“Installing the agent for Sybase”](#) on page 28.

---

**To upgrade the VCS agent for Sybase**

- 1 Save the VCS configuration and stop the VCS engine.

```
# haconf -dump -makero  
# hastop -all -force
```

- 2 Back up the configuration file, main.cf to a location on the cluster node.
- 3 Based on your current VCS Agent version for Sybase, perform the appropriate steps on all systems that have the agent installed:

**To****Perform the following steps**

Upgrade the VCS agent from a version earlier than 5.1

- 1 Remove the VCS agent for Sybase, by using the following command:

```
# pkgrm VRTSvcssy
```

- 2 If you installed the Japanese language package, use the following command:

```
# pkgrm VRTSjacss
```

- 3 Take backup of SybaseTypes.cf

```
# mv /etc/VRTSvcs/conf/config/SybaseTypes.cf  
/etc/VRTSvcs/conf/config/SybaseTypes.cf_bkp
```

- 4 Navigate to the directory that contains the packages:

```
# cd pkgs
```

- 5 Install the VCS agent for Sybase by running the following command:

**Caution:** If you run the following command, the VCS agents for Oracle and DB2 are also upgraded.

```
# pkgadd -d VRTSvsea
```



- | To   | Perform the following steps  |
|--|--|
| Upgrade the VCS agent from 5.1 or later  | <ol style="list-style-type: none"><li data-bbox="610 279 1224 383">1 Remove the VCS agent for Sybase using the following command:<br/><pre data-bbox="657 361 874 383"># pkgrm VRTSvcsea</pre></li><li data-bbox="610 423 1224 527">2 If you have installed the Japanese language package, run the following command:<br/><pre data-bbox="657 505 874 527"># pkgrm VRTSjacse</pre></li><li data-bbox="610 567 1224 671">3 Take backup of SybaseTypes.cf<br/><pre data-bbox="657 614 1224 671"># mv /etc/VRTSvcscs/conf/config/SybaseTypes.cf /etc/VRTSvcscs/conf/config/SybaseTypes.cf_bkp</pre></li><li data-bbox="610 711 1224 786">4 Navigate to the directory that contains the packages:<br/><pre data-bbox="657 758 771 786"># cd pkgs</pre></li><li data-bbox="610 826 1224 1012">5 Install the VCS agent for Sybase by running the following command:<br/><b>Caution:</b> If you run the following command, the VCS agents for Oracle and DBw are also upgraded.<br/><pre data-bbox="657 982 966 1012"># pkgadd -d VRTSvcsea.pkg</pre></li></ol> |
| 4 Make sure that you have copied the SybaseTypes.cf file from the /etc/VRTSagents/ha/conf/Sybase/ directory to /etc/VRTSvcscs/conf/config directory.   |  |
|  | Make sure to update the newly copied SybaseTypes.cf file with all the type-level changes that you had made to the older SybaseTypes.cf file.   |
|  | For example, if you had changed the value of the MonitorInterval attribute from the default 60 to 120 seconds, the SybaseTypes.cf file gets updated. You must apply these type-level changes manually to the newly copied SybaseTypes.cf file.   |
| 5 Copy the main.cf file from the backed up location to /etc/VRTSvcscs/conf/config directory.   |  |
| 6 Edit the main.cf file located under /etc/VRTSvcscs/conf/config. <ul style="list-style-type: none"><li data-bbox="404 1538 1224 1598">■ If you configured detail monitoring, make sure the Monscrip attribute of the Sybase resource type is properly configured.</li></ul> |  |

- Remove the Monscrip attribute for the SybaseBk resource type, if configured.
  - Replace the password specified for the SAPswd attribute (of Sybase and SybaseBk resources) and UPword attribute (of Sybase resource) with encrypted passwords.  
See [“Encrypting passwords for Sybase”](#) on page 42.
  - Save the main.cf file.
- 7 Verify the configuration.
- ```
# cd /etc/VRTSvcs/conf/config  
# hacf -verify
```
- 8 Start VCS on the local node.
- 9 Start VCS on the other nodes.

# Configuring VCS service groups for Sybase

This chapter includes the following topics:

- [About configuring service groups for Sybase](#)
- [Before configuring the service group for Sybase](#)
- [Configuring the service groups for Sybase](#)
- [Configuring the service group for Sybase from Cluster Manager \(Java console\)](#)
- [Configuring the service group for Sybase using the command line](#)
- [Encrypting passwords for Sybase](#)
- [About setting up detail monitoring for the agent for Sybase](#)
- [Enabling and disabling intelligent resource monitoring \(IMF\) for agents](#)
- [Administering the AMF kernel driver](#)

## About configuring service groups for Sybase

Configuring the Sybase service group involves configuring service group resources and defining attribute values for the configured resources. You must have administrator privileges to create and configure a service group. Before you configure the agent, review the Sybase resource types and their attributes.

## Before configuring the service group for Sybase

Before you configure the Sybase service group, you must meet the following prerequisites:

- Verify that VCS is installed and configured on all nodes in the cluster where you plan to configure the service group. For more information on installing VCS see the *Symantec Cluster Server Installation Guide*.

---

**Caution:** In Sybase cluster edition, the Sybase agent assumes that the **membership-mode** is set to **vcs**. When Sybase instances are configured under VCS control, the installer automatically sets the **membership-mode** to **vcs**. If the Sybase server instances are configured manually under VCS control or if the quorum device is rebuilt in 'native' mode, ensure that the **membership-mode** is set to **vcs**.

---

- Verify that Sybase is installed and configured identically on all nodes in the cluster.  
See ["VCS requirements for installing Sybase"](#) on page 22.
- Verify that the Symantec agent for Sybase is installed on all nodes in the cluster.  
See ["Installing the agent for Sybase"](#) on page 28.
- Verify the type definition for Symantec agent for Sybase is imported into the VCS engine.  
See ["Importing the SybaseTypes.cf file"](#) on page 36.

---

**Note:** From VCS 6.0 onwards, you need not encrypt passwords if you use the VCS Cluster Manager (Java Console) to configure attributes. It automatically encrypts the passwords.

---

---

**Caution:** If you do not set the Quorum\_dev attribute for Sybase Cluster Edition, the Sybase agent does not perform the qrmutil-based checks. This error in configuration may lead to undesirable results. For example, if qrmutil returns failure pending, the agent does not panic the system.

---

## Importing the SybaseTypes.cf file

Before you configure the Sybase service group, you must import the SybaseTypes.cf file to the VCS engine.

---

**Note:** Before you start the following procedure, for more instructions on Java GUI, refer to the *Symantec Cluster Server 6.1 Installation Guide*.

---

#### To import the SybaseTypes.cf file using the Cluster Manager (Java Console)

- 1 On one of the nodes in the cluster, start the Cluster Manager (Java Console).
- 2 Log in to the cluster and wait for the Cluster Explorer to launch.
- 3 From the **File** menu select **Import Types**. Switch to the read/write mode if prompted.
- 4 In the Import Types dialog box, select the file:

```
/etc/VRTSagents/ha/conf/Sybase/SybaseTypes.cf
```

- 5 Click **Import** and wait for the file to import.
- 6 Save the configuration.

#### To import the SybaseTypes.cf file using the command line

- 1 Log in to a cluster system as superuser.
- 2 Make the cluster configuration as read-only. This action ensures that all changes to the existing configuration have been saved and further changes are prevented while you modify main.cf:

```
# haconf -dump -makero
```

- 3 To ensure that VCS is not running while you edit main.cf, issue the following command to stop the VCS engine on all systems. Leave the resources that are available online.

```
# hstop -all -force
```

- 4 Make a backup copy of the main.cf file.

```
# cd /etc/VRTSvcs/conf/config  
# cp main.cf main.cf.orig
```

- 5 Edit the main.cf file to include the SybaseTypes.cf file.

```
# include "/etc/VRTSagents/ha/conf/Sybase/SybaseTypes.cf"
```

The Sybase types definition is imported to the VCS engine. The agent for Sybase can be configured without interrupting or stopping VCS.

## Configuring the service groups for Sybase

You can configure the service groups for Sybase using the following methods:

- By using VCS Cluster Manager (Java Console) to edit a resource group template for the agent.  
See [“Configuring the service group for Sybase from Cluster Manager \(Java console\)”](#) on page 38.
- By using the types configuration files and directly editing the sample main.cf file supplied with the agent. This method requires you to restart VCS before the configuration takes effect.  
See [“Configuring the service group for Sybase using the command line”](#) on page 40.
- By using the Veritas Operations Manager (VOM).  
For more information, see VOM documentation.

## Configuring the service group for Sybase from Cluster Manager (Java console)

A template for the Sybase resource groups is automatically installed with the VCS agent for Sybase. Using the VCS cluster Manager (Java console), you can view the template, which displays the Sybase service group, its resources and their attributes. You can dynamically modify the attributes' values as necessary for your configuration.

---

**Note:** Before you start the following procedure, for more instructions on Java GUI, refer to the *Symantec Cluster Server 6.1.0 Installation Guide*.

---

### To configure a service group from the Java console

- 1 Make sure that the Sybase type definition file SybaseTypes.cf is imported in your configuration.  
See [“Configuring the service groups for Sybase”](#) on page 38.
- 2 Launch the Cluster Configuration wizard using any of the following ways:
  - From the Cluster Explorer menu, select **Tools > Configuration Wizard**.
  - If no service groups exist on the system, Cluster Explorer prompts you to launch the Cluster Configuration wizard. Click **Yes** when prompted.The Loading Templates Information window appears, and launches the wizard.
- 3 Review the information in the Welcome dialog box and click **Next**.

- 4 Specify the name of the service group and the target systems on which the service group is configured.
  - Enter the name of the service group.
  - From the **Available Systems** box, select the systems on which to configure the service group.
  - Click the right arrow to move the selected systems to the **Systems for Service Group** box. To remove a system from the box, select the system and click the left arrow.
  - Specify system priority for the service group to failover. System priority is numbered sequentially, with the lowest assigned number denoting the highest priority.
  - Select the **Service Group Type** as Failover and click **Next**.
- 5 On the **Would you like to use a template to configure the service group?** dialog box, click **Next** to configure the service group using a template.
- 6 Select the **SybaseGroup** template to configure a Sybase service group.  
 If applicable, a window opens to notify that names of some resources within the new service group are already in use. Resolve the name clashes, if any and click **Next**.
- 7 Click **Next** to create the service group that is based on the selected template.  
 A progress indicator displays the percentage of the commands that are executed to create the service group. The actual commands are displayed at the top of the indicator.
- 8 After the service group is created, click **Next** to edit the attributes of the resources.  
 The left pane in the dialog box lists all the resources for the Sybase service group. Select a resource from the left pane to list the attributes on the right pane. The attributes in bold denote mandatory attributes. You can modify the attribute values as given in the procedure that follows.
- 9 Click **Finish** to accept the default values and complete the configuration.

**To edit the Sybase service group resource attributes**

- 1 Select the resource from the list on the left pane. The resource attributes appear in the right pane.
- 2 Select the attribute to be modified and click the edit icon in the **Edit** column.
- 3 In the Edit Attribute dialog box, enter the attribute values. To modify the scope of the attribute, choose the **Global** or **Local** option.

- 4 Click **OK**.
- 5 Repeat the procedure for each resource and click **Finish**. Edit the attributes for all the resources according to your configuration.
- 6 Follow the wizard instructions to complete the configuration. Click **Finish** to quit the wizard.

---

**Caution:** For added security, you must always provide a secure value for passwords. The password may contain letters (a-z), numbers (0-9), or special characters.

---

See [“Encrypting passwords for Sybase”](#) on page 42.

## Configuring the service group for Sybase using the command line

The VCS agent for Sybase contains a sample configuration file that can be used as reference to directly modify your present configuration file. This method requires you to restart VCS before the configuration takes effect.

### To configure a service group for Sybase from the command line

- 1 Log in to a cluster system as superuser.
- 2 Make sure the Sybase type definition is imported into VCS engine.  
See [“Configuring the service groups for Sybase”](#) on page 38.
- 3 Edit the main.cf file at `/etc/VRTSvcs/conf/config/main.cf`. For reference, use the sample files at `/etc/VRTSagents/ha/conf/Sybase`.
  - Create a Sybase service group.
  - Create the Sybase and SybaseBk resources.  
See [“Sybase resource type”](#) on page 51.  
See [“SybaseBk resource type”](#) on page 61.
  - Edit the default attributes to match the parameters in your configuration.  
For added security, you must always provide a secure value for passwords.  
See [“Encrypting passwords for Sybase”](#) on page 42.
  - Assign dependencies to the newly created resources. Refer to the sample file at `/etc/VRTSagents/ha/conf/Sybase/`.  
See the *Symantec Cluster Server Administrator’s Guide* for more information on assigning dependencies.



**4** Save and close the file.

**5** Verify the syntax of the file `/etc/VRTSvcs/conf/config/main.cf`

```
# cd /etc/VRTSvcs/conf/config
# hacf -verify .
```

**6** Start VCS on the local node.

```
# hastart
```

**7** Start VCS on the other nodes.

**8** If the system is listed in `AutoStartList` attribute of the Sybase service group, verify that all Sybase service group resources are brought online.

```
# hagr -state
```

**9** Take the service group offline and verify that all the resources are stopped.

```
# hagr -offline service_group -sys system_name
```

```
# hagr -state
```

**10** Bring the service group online again and verify that all the resources are available.

```
# hagr -online service_group -sys system_name
```

```
# hagr -state
```

**11** Switch the Sybase service group to the other node.

```
# hagr -switch service_group -to system_name
```

**12** Verify that all Sybase service group resources are brought online on the other node.

```
# hagr -state
```

**13** On all systems, look at the following log files for any errors or status.

```
/var/VRTSvcs/log/engine_A.log
/var/VRTSvcs/log/Sybase_A.log
/var/VRTSvcs/log/SybaseBk_A.log
```

# Encrypting passwords for Sybase

VCS provides a utility `vcseencrypt` to encrypt user passwords. Encrypt passwords before specifying them for Sybase and SybaseBk resource type definition.

The `vcseencrypt` utility also allows you to encrypt the agent passwords using a security key. The security key supports AES (Advanced Encryption Standard) encryption which creates a secure password for the agent. See the *Symantec Cluster Server Administrator's Guide* for more information.

## To encrypt passwords

- 1 From the path `$VCS_HOME/bin/`, run the `vcseencrypt` utility.
- 2 Type the following command.

```
# vcseencrypt -agent
```

The utility prompts you to enter the password twice. Enter the password and press Return.

```
Enter Password:  
Enter Again:
```

- 3 The utility encrypts the password and displays the encrypted password.
- 4 Enter this encrypted password as the value for the attribute.

Save the encrypted password for future reference.

# About setting up detail monitoring for the agent for Sybase

The VCS agent for Sybase provides two levels of application monitoring: basic and detail. In basic monitoring, Sybase resource monitors the Sybase dataserver processes to verify that they are continuously active.

In detail monitoring, the Sybase resource performs transactions on a test table in the database to ensure that the Sybase server functions properly. The agent uses this test table for internal purposes. Symantec recommends that you do not perform any other transaction on the test table. The agent uses the script that is defined in the attribute `Monscript` of the Sybase resource. During detail monitoring, the agent executes the specified script. If the script successfully executes, the agent considers the database available. You can customize the default script according to your configurations.

To activate detail monitoring, the LevelTwoMonitorFreq attribute must be set to a positive integer and User, UPword, Db, and Table attributes must not be empty (""). The attribute Monscript, which contains the path of the detail monitor script, must also exist and must have execute permissions for the root.

## Enabling detail monitoring for the agent for Sybase

Perform the following steps to enable detail monitoring on a database.

---

**Note:** All Sybase resources in the cluster gets modified when you enable detail monitoring for agents.

---

### To enable detail monitoring

- 1 Make sure the Sybase server is configured for detail monitoring.  
See [“Configuring Sybase for detail monitoring”](#) on page 24.
- 2 Make the VCS configuration writable.

```
# haconf -makerw
```

**3 Enable detail monitoring for Sybase.**

```
# hatype -modify Sybase LevelTwoMonitorFreq <value>
# hares -modify Sybase_resource User user_name
# hares -modify Sybase_resource UPword encrypted-password
# hares -modify Sybase_resource Db database_name
# hares -modify Sybase_resource Table table_name
# hares -modify Sybase_resource Monscript
"/opt/VRTSagents/ha/bin/Sybase/SqlTest.pl"
```

---

**Note:** To enable detail monitoring, the LevelTwoMonitorFreq attribute must be set to a positive value. You can also override the value of this attribute at the resource level.

---

**4 Save the configuration.**

```
# haconf -dump -makero
```

---

**Note:** If detail monitoring is configured and the database is full, the SQL queries take considerable time to commit the results. In such a case, the monitor routine for the agent fails and attempts to fail over the service group. This issue is not encountered if detail monitoring is not configured.

---

## Disabling detail monitoring for the agent for Sybase

**1 Make the VCS configuration writable with:**

```
# haconf -makerw
```

**2 To disable detail monitoring for Sybase run the following command:**

```
# hatype -modify Sybase LevelTwoMonitorFreq 0
```

---

**Note:** If the LevelTwoMonitorFreq attribute is overridden at resource level, then use `hares` command and set the LevelTwoMonitorFreq attribute to 0 at resource level.

---

**3 Save the configuration with:**

```
# haconf -dump -makero
```

# Enabling and disabling intelligent resource monitoring (IMF) for agents

Review the following procedures to enable or disable intelligent resource monitoring manually. The intelligent resource monitoring feature is enabled by default. The IMF resource type attribute determines whether an IMF-aware agent must perform intelligent resource monitoring.

---

**Note:** VCS provides `haimfconfig` script to enable and disable IMF for agents. You can use the script when VCS is running or when VCS is stopped. Use the script to enable or disable IMF for the IMF-aware bundled agents, enterprise agents, and custom agents.

---

For additional information, refer to *Enabling and disabling IMF for agents by using script* section in *Symantec Cluster Server Administrator's Guide*.

See [“How the Sybase and SybaseBk agents support intelligent resource monitoring”](#) on page 12.

---

**Note:** All Sybase resources in the cluster gets modified when you enable or disable IMF monitoring for agents.

---

## To enable intelligent resource monitoring

- 1 Make the VCS configuration writable.

```
# haconf -makerw
```

- 2 Run the following command to enable intelligent resource monitoring.

- To enable intelligent monitoring of offline resources:

```
# hatype -modify resource_type IMF -update Mode 1
```

- To enable intelligent monitoring of online resources:

```
# hatype -modify resource_type IMF -update Mode 2
```

- To enable intelligent monitoring of both online and offline resources:

```
# hatype -modify resource_type IMF -update Mode 3
```

You can also change the values of the `MonitorFreq` key and the `RegisterRetryLimit` key of the IMF attribute.

See [“Attribute definitions for the Sybase agent”](#) on page 52.

See [“Attribute definitions for the SybaseBk agent”](#) on page 61.

- 3 Save the VCS configuration

```
# haconf -dump -makero
```

- 4 Make sure that the AMF kernel driver is configured on all nodes in the cluster.

- On Solaris:

- `svcs -l amf`

Configure the AMFdriver if the command output returns that the AMFdriver is not loaded or not configured.

See [“Administering the AMF kernel driver”](#) on page 47.

- 5 Restart the agent. Run the following commands on each node.

```
# haagent -stop agent_name -force -sys sys_name
# haagent -start agent_name -sys sys_name
```

### To disable intelligent resource monitoring

- 1 Make the VCS configuration writable.

```
# haconf -makerw
```

- 2 To disable intelligent resource monitoring for all the resources of a certain type, run the following command:

```
# hatype -modify Sybase IMF -update Mode 0
```

- 3 To disable intelligent resource monitoring for a specific resource, run the following command:

```
# hares -override resource_name IMF
# hares -modify resource_name IMF -update Mode 0
```

- 4 Save the VCS configuration.

```
# haconf -dump -makero
```

---

**Note:** For Sybase cluster edition, the agent performs a monitoring check based on `qrmutil` whenever the monitor entry point is executed, either because IMF MonitorFreq is reached or LevelTwoMonitorFreq is reached. For example, if IMF MonitorFreq is set to a higher value such as 10, monitoring check based on `qrmutil` is performed after 10 x MonitorInterval seconds.

---

## Administering the AMF kernel driver

Perform the following procedures to start or stop the IMF kernel driver.

### To start the AMF kernel driver

- 1 Set the value of the AMF\_START variable to 1 in the following file:

```
# /etc/default/amf
```

- 2 Start the AMF kernel driver. Run the following command:

- On Solaris:

```
# svcadm enable amf
```

### To stop the AMF kernel driver

- 1 Set the value of the AMF\_STOP variable to 1 in the following file:

```
# /etc/default/amf
```

- 2 Run the following command:

- On Solaris:

```
# svcadm disable -t amf
```

# Administering VCS service groups for Sybase

This chapter includes the following topics:

- [About administering service groups for Sybase](#)
- [Bringing the Sybase service group online](#)
- [Taking the Sybase service group offline](#)
- [Switching the Sybase service group](#)
- [Modifying the Sybase service group configuration](#)
- [Viewing the agent log for Sybase](#)

## About administering service groups for Sybase

You can administer service groups with the Cluster Manager (Java Console), the Veritas Operations Manager, or from the command line. The following procedures use the Cluster Manager (Java Console).

## Bringing the Sybase service group online

Perform the following steps to bring a service group online. Note that in the initial few cycles of bringing a service group online, the memory usage by the agent can spike.



**To bring a service group online**

- 1 From Cluster Explorer, click the **Service Groups** tab in the configuration tree.
- 2 Right-click the service group and click **Enable Resources** to enable all the resources in this group.
- 3 Right-click the service group, hover over **Enable**, and select either the node or all the nodes where you want to enable the service group.
- 4 Save and close the configuration. Click **File > Save Configuration**, then **Close Configuration**.
- 5 Right-click the service group, pause over Online, and select the system where you want to bring the service group online.

## Taking the Sybase service group offline

Perform the following procedure from Cluster Manager (Java Console) to take the service group offline.

**To take a service group offline**

- 1 In the Cluster Explorer configuration tree with the Service Groups tab selected, right-click the service group that you want to take offline.
- 2 Choose **Offline**, and select the appropriate system from the pop-up menu.

## Switching the Sybase service group

The process of switching a service group involves taking it offline on its current system and bringing it online on another system. Perform the following procedure from Cluster Manager (Java Console) to switch the service group.

**To switch a service group**

- 1 In the Cluster Explorer configuration tree with the Service Groups tab selected, right-click the service group.
- 2 Choose **Switch To**, and select the appropriate system from the pop-up menu.

## Modifying the Sybase service group configuration

You can dynamically modify the Sybase agent using several methods, including the Cluster Manager (Java Console), Veritas Operations Manager, and the command line.

See the *Symantec Cluster Server Administrator's Guide* for more information.

## Viewing the agent log for Sybase

The VCS agent for Sybase logs messages to the following files:

`/var/VRTSvcs/log/engine_A.log`

`/var/VRTSvcs/log/Sybase_A.log`

`/var/VRTSvcs/log/SybaseBk_A.log`

# Resource type definitions for Sybase

This appendix includes the following topics:

- [About the resource type and attribute definitions for Sybase](#)
- [Sybase resource type](#)
- [SybaseBk resource type](#)

## About the resource type and attribute definitions for Sybase

The resource type represents the VCS configuration definition of the agent. It also specifies how the configuration file, `main.cf`, defines the agent. Configuring the agent involves assigning values to the resource type attributes.

For the resource type attributes:

See [“Attribute definitions for the Sybase agent”](#) on page 52.

See [“Attribute definitions for the SybaseBk agent”](#) on page 61.

For the sample `main.cf` configuration files:

See [“Sample configuration for agent for Sybase on Solaris systems”](#) on page 70.

## Sybase resource type

The type definitions and attribute definitions for the Sybase resource type are described as follows.

## Type definition for the Sybase agent

The resource type definition for the agent for Sybase is as follows.

```
type Sybase (
    static boolean AEPTIMEOUT = 1
    static keylist SupportedActions = { "checkpoint_all" }
    str Server
    str Owner
    str Home
    str Version
    str SA
    str SAPswd
    str Run_ServerFile
    str User
    str UPword
    str Db
    str Table
    str Monscript = "/opt/VRTSagents/ha/bin/Sybase/SqlTest.pl"
    boolean WaitForRecovery = 0
    str Quorum_dev
    str interfaces_File
    int ShutdownWaitLimit = 60
    int DelayAfterOnline = 10
    int DelayAfterOffline = 2
    static int ToleranceLimit = 1
    static str ArgList[] = { Server, Owner, Home, Version, SA,
        SAPswd, User, UPword, Db, Table, Monscript,
        WaitForRecovery, Run_ServerFile, Quorum_dev, State,
        interfaces_File, ShutdownWaitLimit, DelayAfterOnline,
        DelayAfterOffline }
    static int IMF{} = { Mode=3, MonitorFreq=5, RegisterRetryLimit=3 }
    static str IMFRegList[] = { Server, Owner, Quorum_dev }
    static int ContainerOpts{} = { RunInContainer=1, PassCInfo=0 }
    static str AgentDirectory = "/opt/VRTSagents/ha/bin/Sybase"
)
```

## Attribute definitions for the Sybase agent

Review the description of the Sybase agent attributes. The agent attributes are classified as required, optional, and internal.

[Table A-1](#) lists the required attributes.

**Table A-1** Required attributes

| Required Attributes | Definition                                                                                                                                                                                                                                                                                                                                                                                                                                                                                                                                                                                                                                                                                                                                                          |
|---------------------|---------------------------------------------------------------------------------------------------------------------------------------------------------------------------------------------------------------------------------------------------------------------------------------------------------------------------------------------------------------------------------------------------------------------------------------------------------------------------------------------------------------------------------------------------------------------------------------------------------------------------------------------------------------------------------------------------------------------------------------------------------------------|
| Home                | <p>The \$SYBASE path to Sybase binaries and configuration files.</p> <p>Type and dimension: string-scalar</p> <p>Default value: No default value</p>                                                                                                                                                                                                                                                                                                                                                                                                                                                                                                                                                                                                                |
| Owner               | <p>Sybase user as the defined owner of executables and database files in any of the sources (such as NIS+, /etc/hosts, and so on) specified in the /etc/nsswitch.conf file for passwd entry. The Sybase executables and database files are accessed in the context of this user.</p> <p>Type and dimension: string-scalar</p> <p>See <a href="#">“System Group and User for Sybase home directory”</a> on page 23.</p>                                                                                                                                                                                                                                                                                                                                              |
| Quorum_dev          | <p>The quorum device manages the cluster membership, stores cluster configuration data, and contains information shared among server instances and nodes. The quorum device is a disk that is accessible to all the nodes in the cluster. Specify a fully qualified quorum device name.</p> <p>Type and dimension: string-scalar</p> <p>Default value: No default value</p> <p>Note: This attribute should be specified only for the cluster edition.</p> <p><b>Note:</b> If you do not set the Quorum_dev attribute for Sybase Cluster Edition, the Sybase agent does not perform the qrmutil-based checks. This error in configuration may lead to undesirable results. For example, if qrmutil returns failure pending, the agent does not panic the system.</p> |
| SA                  | <p>Sybase database administrator. This attribute is required to connect to the ASE for shutdown.</p> <p>Type and dimension: string-scalar</p> <p>Default value: No default value</p>                                                                                                                                                                                                                                                                                                                                                                                                                                                                                                                                                                                |

**Table A-1** Required attributes (*continued*)

| Required Attributes | Definition                                                                                                                                                                                                                                                                                                                                                                                                                                                                                                                                                                                                                                                                                      |
|---------------------|-------------------------------------------------------------------------------------------------------------------------------------------------------------------------------------------------------------------------------------------------------------------------------------------------------------------------------------------------------------------------------------------------------------------------------------------------------------------------------------------------------------------------------------------------------------------------------------------------------------------------------------------------------------------------------------------------|
| SApswd              | <p>Encrypted password for Sybase database administrator. This password is required to connect to the ASE for shutdown.</p> <p>Type and dimension: string-scalar</p> <p>Default value: No default value</p> <p>See <a href="#">“Encrypting passwords for Sybase”</a> on page 42.</p> <p><b>Note:</b> You need not specify a value for this attribute if the SA user does not require a password.</p>                                                                                                                                                                                                                                                                                             |
| Server              | <p>The \$DSQUERY ASE name. Only one server should be configured in a Sybase service group. The advantage of configuring Sybase resources in a separate service group is, each Sybase data server can failover independently.</p> <p>When multiple Sybase resources are configured in a single service group, even if one of the “n” data servers fail, the entire service group will be failed over.</p> <p>Type and dimension: string-scalar</p> <p>Default value: No default value</p>                                                                                                                                                                                                        |
| Version             | <p>Version of Sybase ASE.</p> <p>Type and dimension: string-scalar</p> <p>Default value: No default value</p> <p><b>Note:</b> After the Sybase resource is online in VCS, you must not modify the Home and Version attributes. For the Sybase cluster edition, setting invalid values for Home and Version attributes when the resource is in Online state causes the node to panic.</p> <p><b>Note:</b> For Sybase cluster edition, after the Sybase resource is online in VCS, you must not modify the Home and Version attributes. For the Sybase cluster edition, setting invalid values for Home and Version attributes when the resource is in Online state causes the node to panic.</p> |

[Table A-2](#) lists the optional attributes.

Table A-2 Optional attributes

| Optional Attributes | Definition                                                                                                                                                                                                                                                                                                                                                                                                                                                                                                      |
|---------------------|-----------------------------------------------------------------------------------------------------------------------------------------------------------------------------------------------------------------------------------------------------------------------------------------------------------------------------------------------------------------------------------------------------------------------------------------------------------------------------------------------------------------|
| DetailMonitor       | <p>Specifies whether the Sybase server is monitored in detail. A positive integer value indicates that the resource monitors the Sybase server in detail. Value 0 denotes it does not.</p> <p><b>Note:</b> This attribute has been removed from the agent version 6.1.0 onwards.</p> <p>Default is 0.</p> <p>Type and dimension: int-scalar</p> <p><b>Note:</b> The DetailMonitor attribute is deprecated in VCS 6.1. Instead, LevelTwoMonitorFreq attribute at the Sybase resource type level may be used.</p> |
| LevelTwoMonitorFreq | <p>Specifies the frequency at which the agent for this resource type must perform second-level or detailed monitoring.</p> <p>This is a resource type level attribute. You can override the value of this attribute at the resource level.</p> <p>The default value of LevelTwoMonitorFreq attribute is 0 (zero).</p> <p>If required, the value of LevelTwoMonitorFreq attribute can be overridden at resource level.</p>                                                                                       |
| User                | <p>The database user, in the context of which, the transactions are performed on the database. You must specify a value for this attribute if LevelTwoMonitorFreq is set to a positive integer value.</p> <p>Type and dimension: string-scalar</p> <p>Default value: No default value</p>                                                                                                                                                                                                                       |
| UPword              | <p>Encrypted password for the database user. You must specify a value for this attribute if LevelTwoMonitorFreq is set to a positive integer value. However, you need not specify a value for this attribute if the database user does not require a password.</p> <p>See <a href="#">“Encrypting passwords for Sybase”</a> on page 42.</p> <p>intercType and dimension: string-scalar</p> <p>Default value: No default value</p>                                                                               |

Table A-2 Optional attributes (*continued*)

| Optional Attributes | Definition                                                                                                                                                                                                                                                                                                                                                                                                                                                                                                                                               |
|---------------------|----------------------------------------------------------------------------------------------------------------------------------------------------------------------------------------------------------------------------------------------------------------------------------------------------------------------------------------------------------------------------------------------------------------------------------------------------------------------------------------------------------------------------------------------------------|
| Db                  | <p>Name of the database used for detailed monitoring. The table used by the detail monitor script resides in this database. You must specify a value for this attribute if LevelTwoMonitorFreq is set to a positive integer value.</p> <p>Type and dimension: string-scalar</p> <p>Default value: No default value</p>                                                                                                                                                                                                                                   |
| Table               | <p>Name of the table on which the detail monitoring script performs the transactions. You must specify a value for this attribute if LevelTwoMonitorFreq is set to a positive integer value.</p> <p>Type and dimension: string-scalar</p> <p>Default value: No default value</p>                                                                                                                                                                                                                                                                         |
| Monscript           | <p>The path to the detail monitor script; the default value for this attribute is the path for the script, SqlTest.pl, provided with the agent. You must specify a value for this attribute if LevelTwoMonitorFreq is set to a positive integer value.</p> <p>Type and dimension: string-scalar</p> <p>Default value: No default value</p> <p><b>Note:</b> By default, SqlTest.pl script has the execute permission set. If you specify custom detail monitor script, ensure that custom detail monitor script also has the execute permissions set.</p> |
| WaitForRecovery     | <p>The recovery procedures rebuild the server's databases from the transaction logs. This boolean attribute indicates if the agent should wait during Online agent function, till recovery has been completed and all databases that can be made online are brought online. This feature is not supported for pre-12.5.1 Sybase ASE server.</p> <p>Type and dimension: boolean-scalar</p> <p>Default value: 0</p>                                                                                                                                        |
| Run_ServerFile      | <p>Specifies the location of the RUN_SERVER file for the Sybase instance. The default location of this file is used if no value is specified for this attribute.</p> <p>Type and dimension: string-scalar</p> <p>Default value: No default value</p>                                                                                                                                                                                                                                                                                                     |



**Table A-2** Optional attributes (*continued*)

| Optional Attributes | Definition                                                                                                                                                                                                                                                                                                                                                                                                                                                                                                                                                                                                                                                                                                                                                                                                                                                                                                              |
|---------------------|-------------------------------------------------------------------------------------------------------------------------------------------------------------------------------------------------------------------------------------------------------------------------------------------------------------------------------------------------------------------------------------------------------------------------------------------------------------------------------------------------------------------------------------------------------------------------------------------------------------------------------------------------------------------------------------------------------------------------------------------------------------------------------------------------------------------------------------------------------------------------------------------------------------------------|
| IMF                 | <p>This resource-type level attribute determines whether the Sybase agent must perform intelligent resource monitoring. You can also override the value of this attribute at resource-level.</p> <p>This attribute includes the following keys:</p> <ul style="list-style-type: none"><li>■ Mode: Define this attribute to enable or disable intelligent resource monitoring.</li></ul> <p>Valid values are as follows:</p> <ul style="list-style-type: none"><li>■ 0—Does not perform intelligent resource monitoring</li><li>■ 1—Performs intelligent resource monitoring for offline resources and performs poll-based monitoring for online resources</li><li>■ 2—Performs intelligent resource monitoring for online resources and performs poll-based monitoring for offline resources</li><li>■ 3—Performs intelligent resource monitoring for both online and for offline resources</li></ul> <p>Default: 3</p> |

Table A-2 Optional attributes (*continued*)

| Optional Attributes | Definition                                                                                                                                                                                                                                                                                                                                                                                                                                                                                                                                                                                                                                                                                                                                                                                                                                                                                                                                                                                                                                                                                                                                                                                                                                                                                                                                                                                                                                                                                                                                          |
|---------------------|-----------------------------------------------------------------------------------------------------------------------------------------------------------------------------------------------------------------------------------------------------------------------------------------------------------------------------------------------------------------------------------------------------------------------------------------------------------------------------------------------------------------------------------------------------------------------------------------------------------------------------------------------------------------------------------------------------------------------------------------------------------------------------------------------------------------------------------------------------------------------------------------------------------------------------------------------------------------------------------------------------------------------------------------------------------------------------------------------------------------------------------------------------------------------------------------------------------------------------------------------------------------------------------------------------------------------------------------------------------------------------------------------------------------------------------------------------------------------------------------------------------------------------------------------------|
| IMF (cont.)         | <ul style="list-style-type: none"> <li>■ <b>MonitorFreq:</b> This key value specifies the frequency at which the agent invokes the monitor agent function. The value of this key is an integer.<br/>Default: 5<br/>You can set this key to a non-zero value for cases where the agent requires to perform both poll-based and intelligent resource monitoring. If the value is 0, the agent does not perform poll-based process check monitoring.<br/>After the resource registers with the AMF kernel driver, the agent calls the monitor agent function as follows: <ul style="list-style-type: none"> <li>■ After every (MonitorFreq x MonitorInterval) number of seconds for online resources</li> <li>■ After every (MonitorFreq x OfflineMonitorInterval) number of seconds for offline resources</li> </ul> </li> <li>■ <b>RegisterRetryLimit:</b> If you enable intelligent resource monitoring, the agent invokes the <code>sybase_imf_register</code> agent function to register the resource with the AMFkernel driver. The value of the RegisterRetryLimit key determines the number of times the agent must retry registration for a resource. If the agent cannot register the resource within the limit that is specified, then intelligent monitoring is disabled until the resource state changes or the value of the Mode key changes.<br/>Default: 3</li> </ul> <p>See <a href="#">“Enabling and disabling intelligent resource monitoring (IMF) for agents”</a> on page 45.</p> <p>Type and dimension: Integer-association.</p> |
| interfaces_File     | <p>Specifies the location of interfaces file, including the directory name and the file name for the Sybase instance. If this attribute is configured, [-I interfaces file] option is used when connecting to the isql session. If this attribute is not configured, the agent does not use the -I option.</p> <p>Type and dimension: string-scalar</p> <p>Default value: No default value</p> <p>For example: <code>/sybase/my_interfaces_file</code></p> <p><b>Note:</b> It is assumed that you have modified the RUN_ServerFile with the non-default interface file location if the interfaces_File attribute is configured.</p>                                                                                                                                                                                                                                                                                                                                                                                                                                                                                                                                                                                                                                                                                                                                                                                                                                                                                                                 |

**Table A-2** Optional attributes (*continued*)

| Optional Attributes | Definition                                                                                                                                                                                                                                                                                                                      |
|---------------------|---------------------------------------------------------------------------------------------------------------------------------------------------------------------------------------------------------------------------------------------------------------------------------------------------------------------------------|
| DelayAfterOnline    | <p>Specifies the number of seconds that elapse after the Online entry point is complete and before the next monitor cycle is invoked.</p> <p>Type and dimension: integer-scalar</p> <p>Default value: 10</p>                                                                                                                    |
| DelayAfterOffline   | <p>Specifies the number of seconds that elapse after the Offline entry point is complete and before the next monitor cycle is invoked.</p> <p>Type and dimension: integer-scalar</p> <p>Default value: 2</p>                                                                                                                    |
| ShutdownWaitLimit   | <p>Maximum number of seconds for which the agent waits for the Sybase instance to stop after issuing the <code>shutdown with wait</code> command, and before attempting to issue the <code>kill -15 &lt;data server-pid&gt;</code> command, if required.</p> <p>Type and dimension: integer-scalar</p> <p>Default value: 60</p> |

Table A-2 Optional attributes (*continued*)

| Optional Attributes                 | Definition                                                                                                                                                                                                                                                                                                                                                                                                                                                                                                                                                                                                                                                                                                                                                                                                                                                                                                                                                                                                                                                                                                                                                                                                                                                                                                           |
|-------------------------------------|----------------------------------------------------------------------------------------------------------------------------------------------------------------------------------------------------------------------------------------------------------------------------------------------------------------------------------------------------------------------------------------------------------------------------------------------------------------------------------------------------------------------------------------------------------------------------------------------------------------------------------------------------------------------------------------------------------------------------------------------------------------------------------------------------------------------------------------------------------------------------------------------------------------------------------------------------------------------------------------------------------------------------------------------------------------------------------------------------------------------------------------------------------------------------------------------------------------------------------------------------------------------------------------------------------------------|
| ContainerOpts<br>(For Solaris only) | <p>This resource-type level attribute specifies the container options for the Sybase instances that run in the context of Solaris containers (zones or projects). This attribute has the following keys, which can take values 0 or 1:</p> <ul style="list-style-type: none"> <li>■ RunInContainer (RIC)<br/>Set the key value as 1 for the Sybase agent to monitor Sybase instances running in the context of Solaris container. Set the key value as 0 if you do not want to run the Sybase resource in the context of Solaris container.<br/>Default is 1.</li> <li>■ PassCInfo (PCI)<br/>Set the key value as 1 for the Sybase resource to get the container information defined in the VCS service group's ContainerInfo attribute.<br/>Set the key value as 0 if you do not want to get the container information.<br/>Default is 1.</li> <li>■ PassLoadInfo (PLI)<br/>Set the key value as 1 for the Sybase resource to get the load dimensions defined in the VCS service group's Load attribute. Set the key value as 0 if you do not want to get the load information.<br/>Default is 0.<br/>See <i>Symantec Cluster Server Administrator's Guide</i> and the <i>Symantec Storage Foundation and High Availability Solutions Virtualization Guide</i>.<br/>Type and dimension: static-assoc-int</li> </ul> |
| Quorum_dev                          | <p>The quorum device manages the cluster membership, stores cluster configuration data and contains information shared among server instances and nodes. It must be a disk accessible to all nodes in the cluster. Specify fully qualified quorum device name.</p> <p><b>Note:</b> If you do not set the Quorum_dev attribute for Sybase Cluster Edition, the Sybase agent does not perform the qrmutil-based checks. This error in configuration may lead to undesirable results. For example, if qrmutil returns failure pending, the agent does not panic the system.</p> <p>Type and dimension: String-scalar<br/>Default value: No default value</p>                                                                                                                                                                                                                                                                                                                                                                                                                                                                                                                                                                                                                                                            |

**Table A-2** Optional attributes (*continued*)

| Optional Attributes | Definition                                                                                                                                                                                                                                         |
|---------------------|----------------------------------------------------------------------------------------------------------------------------------------------------------------------------------------------------------------------------------------------------|
| Run_ServerFile      | <p>Specifies the location of the RUN_SERVER file of the Sybase instance. The default location of the file is used if no value is specified for this attribute.</p> <p>Type and dimension: String-scalar</p> <p>Default value: No default value</p> |

## SybaseBk resource type

### Type definition for the SybaseBk agent

The resource type definition for the agent for Sybase is as follows.

```

type SybaseBk (
    str Backupserver
    str Owner
    str Home
    str Version
    str Server
    str SA
    str SApswd
    str Run_ServerFile
    str interfaces_File
    static str ArgList[] = { Backupserver, Owner, Home, Version,
    Server, SA, SApswd, Run_ServerFile, interfaces_File }
    static int IMF{} = { Mode=3, MonitorFreq=5, RegisterRetryLimit=3 }
    static str IMFRegList[] = { Backupserver, Owner }
    static int ContainerOpts{} = { RunInContainer=1, PassCInfo=0 }
    static str AgentDirectory = "/opt/VRTSagents/ha/bin/SybaseBk"
)

```

### Attribute definitions for the SybaseBk agent

Review the description of the SybaseBk agent attributes. The agent attributes are classified as required and internal.

[Table A-3](#) lists the required attributes for SybaseBk resource.

**Table A-3** Required attributes

| Required Attributes | Definition                                                                                                                                                                                                                                                                                                                                                                                                                                    |
|---------------------|-----------------------------------------------------------------------------------------------------------------------------------------------------------------------------------------------------------------------------------------------------------------------------------------------------------------------------------------------------------------------------------------------------------------------------------------------|
| Server              | <p>The \$DSQUERY Backup name. Only one server should be configured in a Sybase service group. The advantage of configuring Sybase resources in a separate service group is, each Sybase data server can failover independently. When multiple Sybase resources are configured in a single service group, even if one of the “n” data servers fail, the entire service group will be failed over.</p> <p>Type and dimension: string-scalar</p> |
| Owner               | <p>Sybase user as the defined owner of executables and database files in any of the sources (such as NIS+, /etc/hosts, and so on) specified in the /etc/nsswitch.conf file for passwd entry. The Sybase executables and database files are accessed in the context of this user.</p> <p>Type and dimension: string-scalar</p>                                                                                                                 |
| Home                | <p>The \$SYBASE path to Sybase binaries and configuration files.</p> <p>Type and dimension: string-scalar</p>                                                                                                                                                                                                                                                                                                                                 |
| Version             | <p>Version of Sybase Backup Server.</p> <p>Type and dimension: string-scalar</p>                                                                                                                                                                                                                                                                                                                                                              |
| Backupserver        | <p>The \$BACKUP SYBASE Backup Server name.</p> <p>Type and dimension: string-scalar</p>                                                                                                                                                                                                                                                                                                                                                       |
| SA                  | <p>Sybase database administrator. This attribute is required to connect to the ASE for shutdown.</p> <p>Type and dimension: string-scalar</p>                                                                                                                                                                                                                                                                                                 |
| SApswd              | <p>Encrypted password of Sybase database administrator. This password is required to connect to the ASE for shutdown.</p> <p>Type and dimension: string-scalar</p> <p>See <a href="#">“Encrypting passwords for Sybase”</a> on page 42.</p> <p><b>Note:</b> You need not specify a value for this attribute if the SA user does not require a password.</p>                                                                                   |

[Table A-4](#) lists the optional attribute for SybaseBk agent.

**Table A-4** Optional attribute

| Optional attribute | Definition                                                                                                                                                                                                                                                                                                                                                                                                                                                                                                                                                             |
|--------------------|------------------------------------------------------------------------------------------------------------------------------------------------------------------------------------------------------------------------------------------------------------------------------------------------------------------------------------------------------------------------------------------------------------------------------------------------------------------------------------------------------------------------------------------------------------------------|
| Run_ServerFile     | <p>Specifies the location of the RUN_SERVER file for the Sybase instance. The default location of this file is used if no value is specified for this attribute.</p> <p>Type and dimension: String-scalar</p> <p>Default value: No default value</p>                                                                                                                                                                                                                                                                                                                   |
| interfaces_File    | <p>Specifies the location of interfaces file for the Sybase instance. If this attribute is configured, [-I interfaces file] option is used when connecting to the isql session. If this attribute is not configured, the agent does not use the -I option.</p> <p>Type and dimension: string-scalar</p> <p>Default value: No default value</p> <p>For example: /sybase/my_interfaces_file</p> <p><b>Note:</b> It is assumed that you have modified the RUN_ServerFile with the non-default interface file location if the interfaces_File attribute is configured.</p> |

**Table A-4** Optional attribute (*continued*)

| Optional attribute | Definition |
|--------------------|------------|
| IMF                |            |



Table A-4 Optional attribute (*continued*)

| Optional attribute | Definition                                                                                                                                                                                                                                                                                                                                                                                                                                                                                                                                                                                                                                                                                                                                                                                                                                                                                                                                                                                                                                                                                                                                                                                                                                                                                                                                                                                                                                                                                                                                                                                                                                                                                                                                                                                                                                                                                                                                                                                                                                                                                                                                                                                                                                                                                                                                                     |
|--------------------|----------------------------------------------------------------------------------------------------------------------------------------------------------------------------------------------------------------------------------------------------------------------------------------------------------------------------------------------------------------------------------------------------------------------------------------------------------------------------------------------------------------------------------------------------------------------------------------------------------------------------------------------------------------------------------------------------------------------------------------------------------------------------------------------------------------------------------------------------------------------------------------------------------------------------------------------------------------------------------------------------------------------------------------------------------------------------------------------------------------------------------------------------------------------------------------------------------------------------------------------------------------------------------------------------------------------------------------------------------------------------------------------------------------------------------------------------------------------------------------------------------------------------------------------------------------------------------------------------------------------------------------------------------------------------------------------------------------------------------------------------------------------------------------------------------------------------------------------------------------------------------------------------------------------------------------------------------------------------------------------------------------------------------------------------------------------------------------------------------------------------------------------------------------------------------------------------------------------------------------------------------------------------------------------------------------------------------------------------------------|
|                    | <p>This resource-type level attribute determines whether the Sybase agent must perform intelligent resource monitoring. You can also override the value of this attribute at resource-level.</p> <p>This attribute includes the following keys:</p> <ul style="list-style-type: none"> <li>■ <b>Mode:</b> Define this attribute to enable or disable intelligent resource monitoring.</li> </ul> <p>Valid values are as follows:</p> <ul style="list-style-type: none"> <li>■ 0—Does not perform intelligent resource monitoring</li> <li>■ 1—Performs intelligent resource monitoring for offline resources and performs poll-based monitoring for online resources</li> <li>■ 2—Performs intelligent resource monitoring for online resources and performs poll-based monitoring for offline resources</li> <li>■ 3—Performs intelligent resource monitoring for both online and for offline resources</li> </ul> <p>Default: 3</p> <ul style="list-style-type: none"> <li>■ <b>MonitorFreq:</b> This key value specifies the frequency at which the agent invokes the monitor agent function. The value of this key is an integer.</li> </ul> <p>Default: 5</p> <p>You can set this key to a non-zero value for cases where the agent requires to perform both poll-based and intelligent resource monitoring. If the value is 0, the agent does not perform poll-based process check monitoring.</p> <p>After the resource registers with the AMF kernel driver, the agent calls the monitor agent function as follows:</p> <ul style="list-style-type: none"> <li>■ After every (MonitorFreq x MonitorInterval) number of seconds for online resources</li> <li>■ After every (MonitorFreq x OfflineMonitorInterval) number of seconds for offline resources</li> </ul> <ul style="list-style-type: none"> <li>■ <b>RegisterRetryLimit:</b> If you enable intelligent resource monitoring, the agent invokes the oracle_imf_register agent function to register the resource with theAMFkernel driver. The value of the RegisterRetryLimit key determines the number of times the agent must retry registration for a resource. If the agent cannot register the resource within the limit that is specified, then intelligent monitoring is disabled until the resource state changes or the value of the Mode key changes.</li> </ul> <p>Default: 3</p> |

**Table A-4** Optional attribute (*continued*)

| Optional attribute                 | Definition                                                                                                                                                                                                                                                                                                                                                                                                                                                                                                                                                                                                                                                                                                                                                                                                                                                                                                                                                                                                                                                                                                                                                                                                                                                                                                                    |
|------------------------------------|-------------------------------------------------------------------------------------------------------------------------------------------------------------------------------------------------------------------------------------------------------------------------------------------------------------------------------------------------------------------------------------------------------------------------------------------------------------------------------------------------------------------------------------------------------------------------------------------------------------------------------------------------------------------------------------------------------------------------------------------------------------------------------------------------------------------------------------------------------------------------------------------------------------------------------------------------------------------------------------------------------------------------------------------------------------------------------------------------------------------------------------------------------------------------------------------------------------------------------------------------------------------------------------------------------------------------------|
|                                    | Type and dimension: Integer-association.                                                                                                                                                                                                                                                                                                                                                                                                                                                                                                                                                                                                                                                                                                                                                                                                                                                                                                                                                                                                                                                                                                                                                                                                                                                                                      |
| ContainerOpts<br>(Only Solaris 10) | <p>This resource-type level attribute specifies the container options for the Sybase instances that run in the context of Solaris containers (zones or projects). This attribute has the following keys, which can take values 0 or 1:</p> <ul style="list-style-type: none"> <li>■ RunInContainer (RIC)<br/>Set the key value as 1 for the Sybase agent to monitor Sybase instances running in the context of Solaris container.<br/>Set the key value as 0 if you do not want to run the Sybase resource in the context of Solaris container.<br/>Default is 1.</li> <li>■ PassCInfo (PCI)<br/>Set the key value as 1 for the Sybase resource to get the container information defined in the VCS service group's ContainerInfo attribute.<br/>Set the key value as 0 if you do not want to get the container information.<br/>Default is 1.</li> <li>■ PassLoadInfo (PLI)<br/>Set the key value as 1 for the Sybase resource to get the load dimensions defined in the VCS service group's Load attribute.<br/>Set the key value as 0 if you do not want to get the load information.<br/>Default is 0.<br/>See <i>Veritas Cluster Server Administrator's Guide</i> and the <i>Veritas Storage Foundation and High Availability Solutions Virtualization Guide</i>.</li> </ul> <p>Type and dimension: static-assoc-int</p> |

[Table A-5](#) lists the internal attribute for SybaseBk agent.

This attribute is for internal use only. Symantec recommends not to modify the value of this attribute.

**Table A-5** Internal attribute

| Internal attribute | Definition                                                                                                                                          |
|--------------------|-----------------------------------------------------------------------------------------------------------------------------------------------------|
| AgentDirectory     | <p>Specifies the location of the binaries, scripts, and other files related to the agent for SybaseBk.</p> <p>Type and dimension: static-string</p> |

# Sample configurations for Sybase

This appendix includes the following topics:

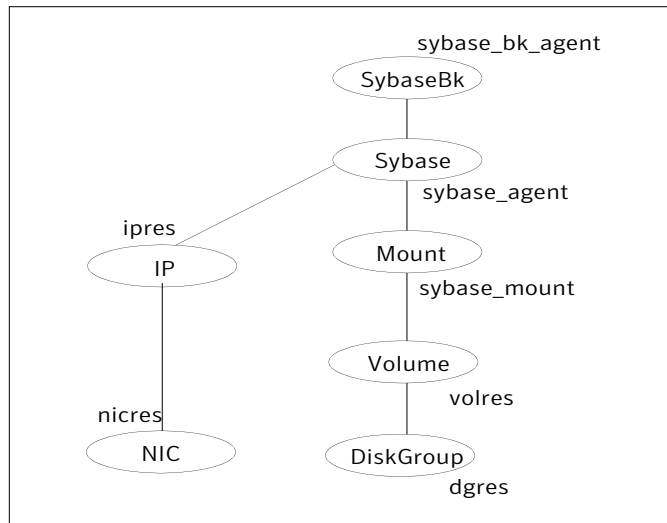
- [About the sample configuration for the Sybase agent](#)
- [Resource dependency graph for the Sybase agent](#)
- [Sample configuration for agent for Sybase on Solaris systems](#)
- [Sample main.cf files for Sybase ASE CE configurations](#)
- [Sample configuration for the Sybase agent in Solaris zones](#)

## About the sample configuration for the Sybase agent

After Sybase agent installation, several sample `main.cf` file types can be viewed in the `/etc/VRTSagents/ha/conf/Sybase`. This appendix describes a typical service group that is configured to monitor the state of Sybase servers in a VCS cluster. The sample configuration graphically depicts the resource types, resources, and resource dependencies within the service group. Review these dependencies carefully before you configure the agent. For more information about these resource types, see the *Symantec Cluster Server Bundled Agents Reference Guide*.

## Resource dependency graph for the Sybase agent

[Figure B-1](#) illustrates the configuration's dependency graph for Solaris.

**Figure B-1** Dependency graph

The dependency graph depicts a single Sybase instance configuration. The configuration contains a disk group with a single volume. The volume is monitored using a Volume resource and mounted using a Mount resource. The Mount resource requires Volume resource, which in turn requires the DiskGroup resource. The service group IP address for Sybase server is monitored using the IP and NIC resource types. The Sybase server can be started after each of these resources are brought online. The Backup Server is started after the Sybase SQL Server is online.

## Resource dependency for Sybase configured in Solaris zones

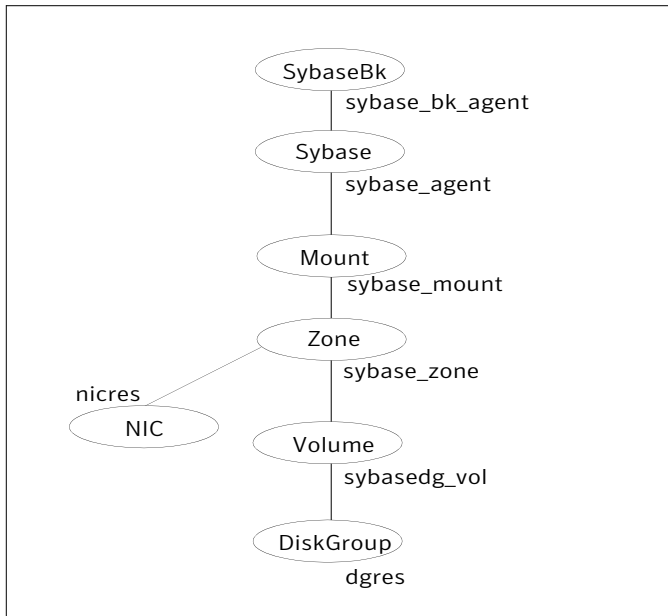
The following examples describe a typical service group that is configured to monitor the state of a Sybase instance that is configured in a Solaris zone.

- Zone root on local disk
- Zone root on shared disk

If the root file system of a zone is on the local disk of each node, the file system is mounted when the system is booted. Hence, the service group does not need to have separate DiskGroup and Volume resources for the zone.

[Figure B-2](#) shows a configuration in which zone root is on the local disk.

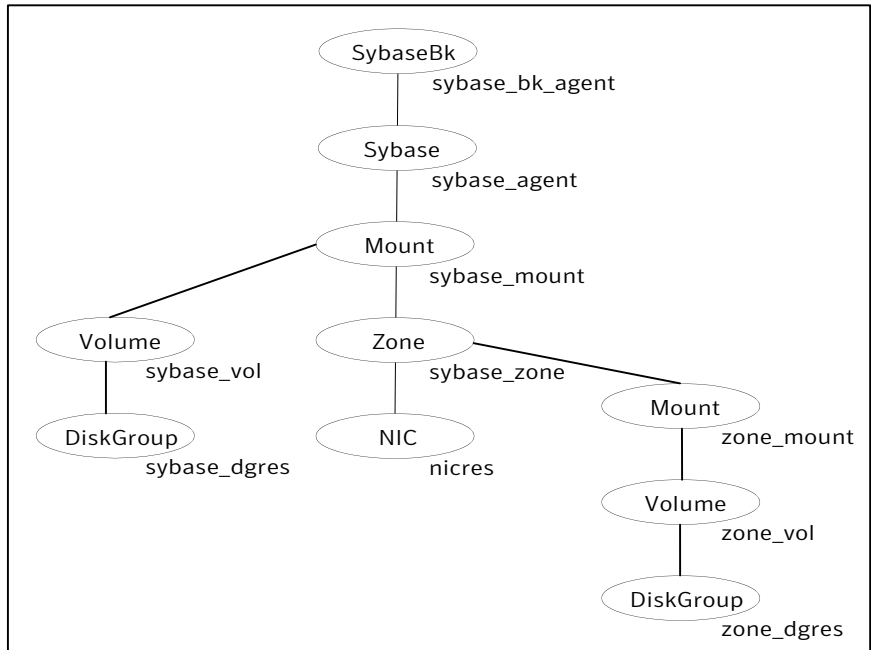
**Figure B-2** Zone root on local disk



If the root file system of a zone is on a shared disk, VCS should mount the file system. Hence, separate DiskGroup and Volume resources are required for the zone.

[Figure B-3](#) shows a configuration in which zone root is on the shared disk.

**Figure B-3** Zone root on shared disk



## Sample configuration for agent for Sybase on Solaris systems

The following sample depicts a basic configuration with a Sybase service group configured with one NIC, one database instance configured with detail monitoring, and one backup instance.

```

include "types.cf"
include "/etc/VRTSagents/ha/conf/Sybase/SybaseTypes.cf"

cluster vcscluster (
  UserNames = { admin = anoGniNkoJooMwoIn1 }
  Administrators = { admin }
  CounterInterval = 5
)
system system1 (
)

system system2 (

```

```
)

group Sybase_group (
    SystemList = { system1 = 0, system2 = 1 }
    AutoStartList = { system1, system2 }
)

DiskGroup dgres (
    DiskGroup = sybasedg
)

IP ipres (
    Device = le0
    Address = "16.9.1.9"
    NetMask = "255.255.0.0"
)

NIC nicres (
    Device = le0
    NetworkType = ether
)

Mount sybase_mount (
    MountPoint = "/opt/Sybase"
    BlockDevice = "/dev/vx/dsk/sybasedg/ase1103"
    FsckOpt = "-n"
    FSType = vxfs
    MountOpt = rw
)

Sybase sybase_agent (
    Server = SYBASE
    Owner = sybase
    Home = "/opt/Sybase"
    Version = sybase11
    SA = sa
    SApswd = sybase
    User = abcd
    UPword = xxxxxxxx
    Db = testdb1
    Table = testtab
    Monscript = "/opt/VRTSagents/ha/bin/Sybase/SqlTest.pl"
    Run_ServerFile = "/opt/sybase/RUN_SYBASE_SERVER"
```

```
WaitForRecovery = 1
interfaces_File = "/newfs/interfaces"
)

SybaseBk sybase_bk_agent (
  Server = SYBASE
  Owner = sybase
  Home = "/opt/Sybase"
  Version = sybasel1
  Backupserver = SYB_BACKUP
  SA = sa
  SApswd = sybase
  Run_ServerFile = "/opt/sybase/RUN_SYBASE_SERVER_BS"
  interfaces_File = "/newfs/interfaces"
)

Volume sybasedg_vol (
  Volume = ase1103
  DiskGroup = dgres
)

sybase_agent requires sybase_mount
sybase_agent requires ipres
sybase_bk_agent requires sybase_agent
sybase_mount requires sybasedg_vol
ipres requires nicres
sybasedg_vol requires dgres
```

## Sample main.cf files for Sybase ASE CE configurations

Sample main.cf file examples are provided for the following Sybase ASE CE configurations:

- Basic cluster configuration
  - With shared mount point on CFS for Sybase binary installation
  - With local mount point on VxFS for Sybase binary installation
- Replicating data between two clusters
  - For a primary site in a CVM VVR configuration
  - For a secondary site in a CVM VVR configuration



## Sample main.cf for a basic Sybase ASE CE cluster configuration under VCS control with shared mount point on CFS for Sybase binary installation

This sample main.cf is for a single site with a basic cluster configuration with shared mount point on CFS for Sybase binary installation.

The following are the configuration details for this Sybase ASE CE configuration sample main.cf:

- File name: sybasece\_main.cf
- File location: /etc/VRTSagents/ha/conf/Sybase/

```
include "types.cf"
include "CFSTypes.cf"
include "CVMTTypes.cf"
include "SybaseTypes.cf"

cluster cluster101 (
    UserNames = { admin = HopHojOlpKppNxpJom }
    Administrators = { admin }
    HacliUserLevel = COMMANDROOT
    UseFence=SCSI3
)

system system1 (
)

system system2 (
)

// binmounts group for configuring CFS mounts for Sybase binaries.

group binmnt (
    SystemList = { system1 = 0, system2 = 1 }
    Parallel = 1
    AutoStartList = { system1, system2 }
    OnlineRetryLimit = 3
    OnlineRetryInterval = 120
)

CFSMount sybbindg_101_sybbinvol_mnt (
    MountPoint = "/sybase"
    BlockDevice = "/dev/vx/dsk/sybbindg_101/sybbin_vol"
```

```
    )

    CVMVolDg sybbindg_101_voldg (
        CVMDiskGroup = sybbindg_101
        CVMVolume = { sybbin_vol }
        CVMActivation = sw
    )

requires group cvm online local firm
sybbindg_101_sybbinvol_mnt requires sybbindg_101_voldg

// resource dependency tree
//
// group binmnt
// {
//     CFSMount sybbindg_101_sybbinvol_mnt
//     {
//         CVMVolDg sybbindg_101_voldg
//     }
// }

// cvm group for CVM and CFS specific agents.

group cvm (
    SystemList = { system1 = 0, system2 = 1 }
    AutoFailOver = 0
    Parallel = 1
    AutoStartList = { system1, system2 }
)

CFSfsckd vxfsckd (
)

CVMCluster cvm_clus (
    CVMClustName = sfsyb_90
    CVMNodeId = { system1 = 0, system2 = 1 }
    CVMTransport = gab
    CVMTimeout = 200
)

CVMVxconfigd cvm_vxconfigd (
    Critical = 0
```

```
CVMVxconfigdArgs = { syslog }
)

cvm_clus requires cvm_vxconfigd
vxfsckd requires cvm_clus

// resource dependency tree
//
// group cvm
// {
//   CFSfsckd vxfsckd
//   {
//     CVMCluster cvm_clus
//     {
//       CVMVxconfigd cvm_vxconfigd
//     }
//   }
// }

// sybasece group for:
// 1. CVM volumes for Sybase database and quorum device
// 2. CFS mount for Sybase database and quorum device
// 3. Process agent for vxfsck process.
// 4. Sybase database instance.

group sybasece (
    SystemList = { system1 = 0, system2 = 1 }
    Parallel = 1
    AutoStartList = { system1, system2 }
    OnlineRetryLimit = 3
    OnlineRetryInterval = 120
)

CFSMount quorum_101_quorumvol_mnt (
    MountPoint = "/quorum"
    BlockDevice = "/dev/vx/dsk/quorum_101/quorumvol"
)

CFSMount sybdata_101_sybvol_mnt (
    MountPoint = "/sybdata"
    BlockDevice = "/dev/vx/dsk/sybdata_101/sybvol"
)
```

```
CVMVolDg quorum_101_voldg (  
    CVMDiskGroup = quorum_101  
    CVMVolume = { quorumvol }  
    CVMActivation = sw  
)  
  
CVMVolDg sybdata_101_voldg (  
    CVMDiskGroup = sybdata_101  
    CVMVolume = { sybvol }  
    CVMActivation = sw  
)  
  
Process vxfsend (  
    PathName = "/sbin/vxfsend"  
    Arguments = "-m sybase -k /tmp/vcmp_socket"  
)  
  
Sybase ase (  
    Server @system1 = ase1  
    Server @system2 = ase2  
    Owner = sybase  
    Home = "/sybase"  
    Version = 15  
    SA = sa  
    Quorum_dev = "/quorum/q.dat"  
)  
  
requires group binmnt online local firm  
ase requires quorum_101_quorumvol_mnt  
ase requires sybdata_101_sybvol_mnt  
ase requires vxfsend  
quorum_101_quorumvol_mnt requires quorum_101_voldg  
sybdata_101_sybvol_mnt requires sybdata_101_voldg  
  
// resource dependency tree  
//  
// group sybasece  
// {  
// Sybase ase  
// {  
// CFSMount quorum_101_quorumvol_mnt
```

```
//      {  
//      CVMVolDg quorum_101_voldg  
//      }  
//      CFSMount sybdata_101_sybvol_mnt  
//      {  
//      CVMVolDg sybdata_101_voldg  
//      }  
//      Process vxfend  
//      }  
// }
```

## Sample main.cf for a basic Sybase ASE CE cluster configuration with local mount point on VxFS for Sybase binary installation

This sample main.cf is for a single site with a basic cluster configuration with local mount point on VxFS for Sybase binary installation.

The following are the configuration details for this Sybase ASE CE configuration sample main.cf:

- File name: sybasece\_main.cf
- File location: /etc/VRTSagents/ha/conf/Sybase/

```
include "types.cf"  
include "CFSTypes.cf"  
include "CVMTTypes.cf"  
include "SybaseTypes.cf"  
  
cluster cluster101 (  
    UserNames = { admin = HopHojOlpKppNxpJom }  
    Administrators = { admin }  
    HacliUserLevel = COMMANDROOT  
    UseFence=SCSI3  
)  
  
system system1 (  
)  
  
system system2 (  
)  
  
// binmounts group for configuring VxFS mounts for Sybase binaries.
```

```
group binlocalmnt (
    SystemList = { system1 = 0, system2 = 1 }
    AutoFailOver = 0
    Parallel = 1
    AutoStartList = { system1, system2 }
    OnlineRetryLimit = 3
    OnlineRetryInterval = 120
)

DiskGroup sybbindg_101_voldg (
    DiskGroup = sybbindg
)

Mount sybbindg_101_sybbinvol_mnt (
    MountPoint = "/sybase"
    BlockDevice = "/dev/vx/dsk/sybbindg_101/sybbin_vol"
    FSType = vxfs
    FsckOpt = "-y"
)

Volume sybbindg_101_vol (
    DiskGroup = sybbindg
    Volume = sybbinvol
)

requires group cvm online local firm
sybbindg_101_sybbinvol_mnt requires sybbindg_101_vol
sybbindg_101_vol requires sybbindg_101_voldg

// resource dependency tree
//
// group binlocalmnt
// {
//   Mount sybbindg_101_sybbinvol_mnt
//     {
//       Volume sybbindg_vol
//         {
//           DiskGroup sybbindg_101_voldg
//         }
//     }
// }
// }
```

```
// cvm group for CVM and CFS specific agents.

group cvm (
    SystemList = { system1 = 0, system2 = 1 }
    AutoFailOver = 0
    Parallel = 1
    AutoStartList = { system1, system2 }
)

CFSfsckd vxfsckd (
)

CVMcluster cvm_clus (
    CVMclustName = cluster101
    CVMNodeId = { system1 = 0, system2 = 1 }
    CVMTransport = gab
    CVMTimeout = 200
)

CVMVxconfigd cvm_vxconfigd (
    Critical = 0
    CVMVxconfigdArgs = { syslog }
)

cvm_clus requires cvm_vxconfigd
vxfsckd requires cvm_clus

// resource dependency tree
//
// group cvm
// {
//   CFSfsckd vxfsckd
//   {
//     CVMcluster cvm_clus
//     {
//       CVMVxconfigd cvm_vxconfigd
//     }
//   }
// }

// sybasece group for:
```

```
// 1. CVM volumes for Sybase database and quorum device
// 2. CFS mount for Sybase database and quorum device
// 3. Process agent for vxfsend process.
// 4. Sybase database instance.

group sybasece (
    SystemList = { system1 = 0, system2 = 1 }
    Parallel = 1
    AutoStartList = { system1, system2 }
    OnlineRetryLimit = 3
    OnlineRetryInterval = 120
)

CFSMount quorum_101_quorumvol_mnt (
    MountPoint = "/quorum"
    BlockDevice = "/dev/vx/dsk/quorum_101/quorumvol"
)

CFSMount sybdata_101_sybvool_mnt (
    MountPoint = "/sybdata"
    BlockDevice = "/dev/vx/dsk/sybdata_101/sybvool"
)

CVMVolDg quorum_101_voldg (
    CVMDiskGroup = quorum_101
    CVMVolume = { quorumvol }
    CVMActivation = sw
)

CVMVolDg sybdata_101_voldg (
    CVMDiskGroup = sybdata_101
    CVMVolume = { sybvool }
    CVMActivation = sw
)

Process vxfsend (
    PathName = "/sbin/vxfsend"
    Arguments = "-m sybase -k /tmp/vcmp_socket"
)

Sybase ase (
    Server @system1 = ase1
    Server @system2 = ase2
)
```



```
    Owner = sybase
    Home = "/sybase"
    Version = 15
    SA = sa
    Quorum_dev = "/quorum/q.dat"
)

requires group binlocalmnt online local firm
ase requires quorum_101_quorumvol_mnt
ase requires sybdata_101_sybvol_mnt
ase requires vxfsend
quorum_101_quorumvol_mnt requires quorum_101_voldg
sybdata_101_sybvol_mnt requires sybdata_101_voldg

// resource dependency tree
//
// group sybasece
// {
//   Sybase ase
//   {
//     CFSMount quorum_101_quorumvol_mnt
//     {
//       CVMVoldg quorum_101_voldg
//     }
//     CFSMount sybdata_101_sybvol_mnt
//     {
//       CVMVoldg sybdata_101_voldg
//     }
//     Process vxfsend
//   }
// }
```

## Sample main.cf for a primary CVM VVR site

This sample main.cf is for a primary site in a CVM VVR configuration. It is one of two sample main.cfs for replicating data between two clusters.

The following are the configuration details for this Sybase ASE CE configuration sample main.cf:

- File name: sybasece\_cvmvvr\_primary\_main.cf

- File location: /etc/VRTSagents/ha/conf/Sybase

```
include "types.cf"
include "CFSTypes.cf"
include "CVMTTypes.cf"
include "VVRTTypes.cf"
include "SybaseTypes.cf"

cluster cluster101 (
    UserNames = { admin = HopHojOlpKppNxpJom }
    ClusterAddress = "10.180.88.188"
    Administrators = { admin }
    HacliUserLevel = COMMANDROOT
    UseFence=SCSI3
)

remotecluster syb_cluster102 (
    ClusterAddress = "10.190.99.199"
)

heartbeat Icmp (
    ClusterList = { syb_cluster102 }
    Arguments @syb_cluster102 = { "10.190.99.199" }

)

system system1 (
)

system system2 (
)

group ClusterService (
    SystemList = { system1 = 0, system2 = 1 }
    AutoStartList = { system1, system2 }
    OnlineRetryLimit = 3
    OnlineRetryInterval = 120
)

Application wac (
    StartProgram = "/opt/VRTSvcs/bin/wacstart"
    StopProgram = "/opt/VRTSvcs/bin/wacstop"
    MonitorProcesses = { "/opt/VRTSvcs/bin/wac" }
```

```
        RestartLimit = 3
    )

IP gcoip (
    Device = eth0
    Address = "10.180.88.188"
    NetMask = "255.255.255.0"
)

NIC csgnic (
    Device = eth0
)

gcoip requires csgnic
wac requires gcoip

// resource dependency tree
//
//     group ClusterService
//     {
//     Application wac
//     {
//     IP gcoip
//     {
//     NIC csgnic
//     }
//     }
//     }
//     }

group RVGgroup (
    SystemList = { system1 = 0, system2 = 1 }
    Parallel = 1
    AutoStartList = { system1, system2 }
)

CVMVolDg sybdata_voldg (
    CVMDiskGroup = sybdata_101
    CVMActivation = sw
)

RVGShared sybdata_rvg (
```

```
        RVG = syb_rvg
        DiskGroup = sybdata_101
    )

requires group binmnt online local firm
sybdata_rvg requires sybdata_voldg

group binmnt (
    SystemList = { system1 = 0, system2 = 1 }
    Parallel = 1
    AutoStartList = { system1, system2 }
    OnlineRetryLimit = 3
    OnlineRetryInterval = 120
)

CFSMount sybbindg_101_sybbinvol_mnt (
    MountPoint = "/sybase"
    BlockDevice = "/dev/vx/dsk/sybbindg_101/sybbin_vol"
)

CVMVolDg sybbindg_101_voldg (
    CVMDiskGroup = sybbindg_101
    CVMVolume = { sybbin_vol }
    CVMActivation = sw
)

requires group cvm online local firm
sybbindg_101_sybbinvol_mnt requires sybbindg_101_voldg

group cvm (
    SystemList = { system1 = 0, system2 = 1 }
    AutoFailOver = 0
    Parallel = 1
    AutoStartList = { system1, system2 }
)

CFSfsckd vxfsckd (
)

CVMCluster cvm_clus (
    CVMClustName = syb_cluster101
    CVMNodeId = { system1 = 0, system2 = 1 }
    CVMTransport = gab
```

```
        CVMTimeout = 200
    )

    CVMVxconfigd cvm_vxconfigd (
        Critical = 0
        CVMVxconfigdArgs = { syslog }
    )

    cvm_clus requires cvm_vxconfigd
    vxfsckd requires cvm_clus

    // resource dependency tree
    //
    //     group cvm
    //     {
    //     CFSfsckd vxfsckd
    //         {
    //         CVMCluster cvm_clus
    //             {
    //             CVMVxconfigd cvm_vxconfigd
    //             }
    //         }
    //     }
    // }

group logowner (
    SystemList = { system1 = 0, system2 = 1 }
    AutoStartList = { system1, system2 }
)

IP logowner_ip (
    Device = eth0
    Address = "10.10.9.101"
    NetMask = "255.255.255.0"
)

NIC nic (
    Device = eth0
)

RVGLogowner rvg_logowner (
    RVG = syb_rvg
```

```
        DiskGroup = sybdata_101
    )

requires group RVGgroup online local firm
logowner requires logowner_ip
logowner_ip requires nic

// resource dependency tree
//
//     group logowner
//     {
//     RVGLogowner rvg_logowner
//     {
//     IP logowner_ip
//     {
//     NIC nic
//     }
//     }
//     }
//     }

group sybasece (
    SystemList = { system1 = 0, system2 = 1 }
    Parallel = 1
    ClusterList = { syb_cluster101 = 0, syb_cluster102 = 1 }
    AutoStartList = { system1, system2 }
    ClusterFailOverPolicy = Manual
    Authority = 1
    OnlineRetryLimit = 3
    TriggerResStateChange = 1
    OnlineRetryInterval = 120
)

CFSMount quorum_101_quorumvol_mnt (
    MountPoint = "/quorum"
    BlockDevice = "/dev/vx/dsk/quorum_101/quorumvol"
)

CFSMount sybdata_101_sybvol_mnt (
    MountPoint = "/sybdata"
    BlockDevice = "/dev/vx/dsk/sybdata_101/sybvol"
)
```

```
CVMVolDg quorum_101_voldg (
    CVMDiskGroup = quorum_101
    CVMVolume = { quorumvol }
    CVMActivation = sw
)

Process vxfsend (
    PathName = "/sbin/vxfsend"
    Arguments = "-m sybase -k /tmp/vcmp_socket"
)

RVGSharedPri syb_vvr_shpri (
    RvgResourceName = sybdata_rvg
    OnlineRetryLimit = 0
)

Sybase ase (
    Server @system1 = ase1
    Server @system2 = ase2
    Owner = sybase
    Home = "/sybase"
    Version = 15
    SA = sa
    Quorum_dev = "/quorum/q.dat"
)

requires group RVGgroup online local firm
sybdata_101_sybvol_mnt requires syb_vvr_shpri
ase requires vxfsend
ase requires sybdata_101_sybvol_mnt
ase requires quorum_101_quorumvol_mnt
quorum_101_quorumvol_mnt requires quorum_101_voldg

// resource dependency tree
//
//     group sybasece
//     {
//     Sybase ase
//         {
//             CFSMount sybdata_101_sybvol_mnt
//                 {
//                     RVGSharedPri syb_vvr_shpri
//                 }
//             }
//         }
//     }
```

```
//          Process vxfsend
//          CFSSMount quorum_101_quorumvol_mnt
//          {
//          CVMVolDg quorum_101_voldg
//          }
//      }
//  }
```

## Sample main.cf for a secondary CVM VVR site

This sample main.cf is for a secondary site in a CVM VVR configuration. It is the second of two sample main.cfs for replicating data between two clusters.

The following are the configuration details for this Sybase ASE CE configuration sample main.cf:

- File name: sybasece\_cvmvvr\_secondary\_main.cf
- File location: /etc/VRTSagents/ha/conf/Sybase

This is main.cf for CVM VVR configuration on Secondary site.

```
-----

include "types.cf"
include "CFSTypes.cf"
include "CVMTTypes.cf"
include "VVRTypes.cf"
include "SybaseTypes.cf"

cluster cluster102 (
    UserNames = { admin = HopHojOlpKppNxpJom }
    ClusterAddress = "10.190.99.199"
    Administrators = { admin }
    HacliUserLevel = COMMANDROOT
    UseFence=SCSI3
)

remoteclass syb_cluster101 (
    ClusterAddress = "10.180.88.188"
)

heartbeat Icmp (
    ClusterList = { syb_cluster101 }
    Arguments @syb_cluster101 = { "10.180.88.188" }
)
```



```
system system3 (
)

system system4 (
)

group ClusterService (
    SystemList = { system3 = 0, system4 = 1 }
    AutoStartList = { system3, system4 }
    OnlineRetryLimit = 3
    OnlineRetryInterval = 120
)

    Application wac (
        StartProgram = "/opt/VRTSvcs/bin/wacstart"
        StopProgram = "/opt/VRTSvcs/bin/wacstop"
        MonitorProcesses = { "/opt/VRTSvcs/bin/wac" }
        RestartLimit = 3
    )

        IP gcoip (
            Device = eth0
            Address = "10.190.99.199"
            NetMask = "255.255.255.0"
        )

            NIC csgnic (
                Device = eth0
            )

            gcoip requires csgnic
            wac requires gcoip

// resource dependency tree
//
// group ClusterService
// {
// Application wac
//     {
//     IP gcoip
//         {
//         NIC csgnic
```

```
//      }  
//    }  
// }  
  
group RVGgroup (  
    SystemList = { system3 = 0, system4 = 1 }  
    Parallel = 1  
    AutoStartList = { system3, system4 }  
)  
  
    CVMVolDg sybdata_voldg (  
        CVMDiskGroup = sybdata_101  
        CVMActivation = sw  
    )  
  
    RVGShared sybdata_rvg (  
        RVG = syb_rvg  
        DiskGroup = sybdata_101  
    )  
  
    requires group binmnt online local firm  
    sybdata_rvg requires sybdata_voldg  
  
group binmnt (  
    SystemList = { system3 = 0, system4 = 1 }  
    Parallel = 1  
    AutoStartList = { system3, system4 }  
    OnlineRetryLimit = 3  
    OnlineRetryInterval = 120  
)  
  
    CFMount sybbindg_101_sybbinvol_mnt (  
        MountPoint = "/sybase"  
        BlockDevice = "/dev/vx/dsk/sybbindg_101/sybbin_vol"  
    )  
  
    CVMVolDg sybbindg_101_voldg (  
        CVMDiskGroup = sybbindg_101  
        CVMVolume = { sybbin_vol }  
        CVMActivation = sw  
    )  
  
    requires group cvm online local firm
```

```
sybbindg_101_sybbinvol_mnt requires sybbindg_101_voldg

group cvm (
    SystemList = { system3 = 0, system4 = 1 }
    AutoFailOver = 0
    Parallel = 1
    AutoStartList = { system3, system4 }
)

CFSfsckd vxfsckd (
)

CVMCluster cvm_clus (
    CVMClustName = syb_cluster102
    CVMNodeId = { system3 = 0, system4 = 1 }
    CVMTransport = gab
    CVMTimeout = 200
)

CVMVxconfigd cvm_vxconfigd (
    Critical = 0
    CVMVxconfigdArgs = { syslog }
)

cvm_clus requires cvm_vxconfigd
vxfsckd requires cvm_clus

// resource dependency tree
//
//     group cvm
//     {
//     CFSfsckd vxfsckd
//         {
//             CVMCluster cvm_clus
//                 {
//                     CVMVxconfigd cvm_vxconfigd
//                 }
//             }
//         }
//     }

group logowner (
    SystemList = { system3 = 0, system4 = 1 }
```

```
AutoStartList = { system3, system4 }
)

IP logowner_ip (
    Device = eth0
    Address = "10.11.9.102"
    NetMask = "255.255.255.0"
)

NIC nic (
    Device = eth0
)

RVGLogowner rvg_logowner (
    RVG = syb_rvg
    DiskGroup = sybdata_101
)

requires group RVGgroup online local firm
logowner requires logowner_ip
logowner_ip requires nic

// resource dependency tree
//
// group logowner
// {
//   RVGLogowner rvg_logowner
//   {
//     IP logowner_ip
//     {
//       NIC nic
//     }
//   }
// }

group sybasece (
    SystemList = { system3 = 0, system4 = 1 }
    Parallel = 1
    ClusterList = { syb_cluster102 = 0, syb_cluster101 = 1 }
    AutoStartList = { system3, system4 }
    OnlineRetryLimit = 3
    OnlineRetryInterval = 120
```

```
)

CFSMount quorum_101_quorumvol_mnt (
    MountPoint = "/quorum"
    BlockDevice = "/dev/vx/dsk/quorum_101/quorumvol"
)

CVMVolDg quorum_101_voldg (
    CVMDiskGroup = quorum_101
    CVMVolume = { quorumvol }
    CVMActivation = sw
)

CFSMount sybdata_101_sybvol_mnt (
    MountPoint = "/sybdata"
    BlockDevice = "/dev/vx/dsk/sybdata_101/sybvol"
)

Process vxfsend (
    PathName = "/sbin/vxfsend"
    Arguments = "-m sybase -k /tmp/vcmp_socket"
)

RVGSharedPri syb_vvr_shpri (
    RvgResourceName = sybdata_rvg
    OnlineRetryLimit = 0
)

Sybase ase (
    Server @system3 = ase1
    Server @system4 = ase2
    Owner = sybase
    Home = "/sybase"
    Version = 15
    SA = sa
    Quorum_dev = "/quorum/q.dat"
)

requires group RVGgroup online local firm
sybdata_101_sybvol_mnt requires syb_vvr_shpri
ase requires vxfsend
ase requires sybdata_101_sybvol_mnt
ase requires quorum_101_quorumvol_mnt
```

```
quorum_101_quorumvol_mnt requires quorum_101_voldg
```

## Sample configuration for the Sybase agent in Solaris zones

A resource of type Zone is added to the sample configuration if the Sybase agent is configured to run in Solaris zones, irrespective of whether the root file system of the zone is on local or shared disks.

```
Zone sybase_zone (  
    ZoneName = z-syb  
)
```

Along with this resource addition, the service group configuration would also change to have the NIC and Mount resources to depend on the Zone resource.

# Changes introduced in previous releases

This appendix includes the following topics:

- [Changes introduced in the previous release](#)

## Changes introduced in the previous release

The enhancements in the previous releases of Symantec Cluster Server Agent for Sybase are as follows:

The VCS agent for Sybase includes the following new or enhanced features:

- The VCS agents for Sybase and SybaseBk now support intelligent resource monitoring. See [“How the Sybase and SybaseBk agents support intelligent resource monitoring”](#) on page 12.
- Intelligent monitoring framework (IMF) is enabled by default in VCS 6.0 release.
- The VCS agent for Sybase now provides the high availability for adaptive server in Sybase ASE cluster edition.
- The VCS agent for Sybase introduces the following new Sybase agent attributes:
  - Quorum\_dev
  - interfaces\_File
  - ShutdownWaitLimit (default value 60)
  - DelayAfterOnline (default value 10)
  - DelayAfterOffline (default value 2)  
See [“Attribute definitions for the Sybase agent”](#) on page 52.
  - WaitForRecovery

---

**Note:** WaitForRecovery is introduced if you upgrade from SFSYBASECE 5.0.

---

- The VCS agent for Sybase introduces the following new SybaseBk agent attribute:
  - `interfaces_File`  
See [“Attribute definitions for the SybaseBk agent”](#) on page 61.
- The DetailMonitor attribute is deprecated in VCS 6.0. Instead, LevelTwoMonitorFreq attribute of Sybase agent may be used. The default value of LevelTwoMonitorFreq attribute is 0 (zero).
- The default value of Tolerancelimit attribute is set to 1 (one) for Sybase agent.
- The long pathname limitation for \$SYBASE is resolved.
- With VCS 6.1 release, using VCS Cluster Manager (Java Console), Sybase and SybaseBk agents encrypt the password by default. Sybase and SybaseBk agents support both plain text and encrypted password. If required, the plain text value can be specified for agent attributes using the command line on by editing the configuration file.
- Sybase agent uses new timeout option during Shutdown of Sybase data server used instead of `shutdown with nowait`.
- For Sybase ASE Enterprise edition, the timeout option for `shutdown` command is supported for versions 12.5.4 and 15.0.2 onwards.
- For Sybase ASE cluster edition, the timeout option for `shudown` command is supported from versions 15.5 ESD#1 onwards.
- The agent supports a new optional attribute `Run_ServerFile`. The attribute specifies the location of the `Run_ServerFile` for a Sybase instance. If this attribute is not specified, the default location of this file is accessed while starting Sybase server instances.
- The VCS agent binaries for Sybase are now part of VRTSvcsea package. This package also includes the VCS agent binaries for DB2 and Oracle.
- If you installed the VCS agent binaries using the installer program, the program updates the `main.cf` file to include the appropriate agent `types.cf` files.
- The Sybase agent supports the IPC cleanup feature.
- The agent supports a new attribute `WaitForRecovery`. If this attribute is enabled, during the online function, the agent waits till recovery has been completed and all databases that can be made online are brought online.



- The attributes ContainerName and ContainerType are replaced with resource type-level attribute ContainerOpts, and a service group-level attribute ContainerInfo.
- The agent supports a new action called checkpoint\_all. Performs "checkpoint\_all" for the Sybase dataserver by connecting to an isql session.
- The agent supports a new optional attribute Run\_ServerFile. The attribute specifies the location of the RUN\_SERVER file for a Sybase instance. If this attribute is not specified, the default location of this file is accessed while starting Sybase server instances.

# Index

## Symbols

\$SYBASE 23

## A

agent for Backup server  
    functions 15  
    resource type 61  
    type definition 61  
agent for SQL server  
    attribute definitions 52  
    functions 13  
    resource type 51  
    type definition 51

## B

Backup server agent attributes  
    AgentDirectory 63, 66  
    Backupserver 62  
    home 62  
    owner 62  
    SA 62  
    SApswd 62  
    server 62  
    version 62

## C

cluster manager 38  
commands  
    hagr 30  
    hagui 36  
configuration  
    typical setup 20  
configuration wizard 38  
configuring service groups 38  
    about 38  
    cluster manager (Java Console) 38  
    command line 40  
    prerequisites 38

## D

database dbspaces 23  
detail monitoring  
    disabling 44  
    enabling 43

## H

hagr command 30  
hagui command 36

## I

IMF 12  
installing Sybase 24  
installing Sybase agent  
    Japanese language pack 28  
    Solaris 28

## M

monitoring  
    basic 18  
    detail 18  
monitoring options  
    Solaris zones 19

## R

removing Sybase agent 30

## S

sample configuration  
    Solaris 70  
    Solaris zones 94  
service group  
    viewing log 50  
SQL server agent attributes  
    Db 56  
    DelayAfterOffline 59  
    DelayAfterOnline 59  
    DetailMonitor 55  
    home 53

- SQL server agent attributes *(continued)*
  - monscript 56
  - owner 53
  - Quorum\_dev 53
  - Run\_ServerFile 56
  - SA 53
  - SAPswd 54
  - server 54
  - ShutdownWaitLimit 59
  - table 56
  - UPword 55
  - user 55
  - version 54
  - WaitForRecovery 56
- support for intelligent resource monitoring 12
- supported software 11
- Sybase
  - database dbspaces 23
  - directory on shared disks 23
  - installation directory 22
  - installation prerequisites 22
  - installing 24
  - language settings 23
  - setting up for detail monitoring 24
  - transparent TCP/IP failover 23
- Sybase agent
  - about 10
  - agent functions 12
  - configuring using cluster manager 38
  - configuring using command line 40
  - detail monitoring 42
  - disabling 30
  - installation prerequisites 27
  - installing 28
  - monitoring options 18
  - removing 30
  - supported software 11
  - typical setup 20
  - uninstalling 30
  - upgrading 31
- Sybase high availability 11
- SybaseTypes.cf file
  - importing 36

## T

- transparent TCP/IP failover 23
- type definition 52

## U

- uninstalling Sybase agent 30