

Symantec NetBackup™ for Informix Administrator's Guide

for UNIX and Linux



Symantec NetBackup™ for Informix Administrator's Guide

The software described in this book is furnished under a license agreement and may be used only in accordance with the terms of the agreement.

Documentation version: 7.6

Legal Notice

Copyright © 2013 Symantec Corporation. All rights reserved.

Symantec, the Symantec Logo, the Checkmark Logo, Veritas, and NetBackup are trademarks or registered trademarks of Symantec Corporation or its affiliates in the U.S. and other countries. Other names may be trademarks of their respective owners.

This Symantec product may contain third party software for which Symantec is required to provide attribution to the third party ("Third Party Programs"). Some of the Third Party Programs are available under open source or free software licenses. The License Agreement accompanying the Software does not alter any rights or obligations you may have under those open source or free software licenses. Please see the Third Party Legal Notice Appendix to this Documentation or TPIP ReadMe File accompanying this Symantec product for more information on the Third Party Programs.

Portions of this software are derived from the RSA Data Security, Inc. MD5 Message-Digest Algorithm. Copyright 1991-92, RSA Data Security, Inc. Created 1991. All rights reserved.

The product described in this document is distributed under licenses restricting its use, copying, distribution, and decompilation/reverse engineering. No part of this document may be reproduced in any form by any means without prior written authorization of Symantec Corporation and its licensors, if any.

THE DOCUMENTATION IS PROVIDED "AS IS" AND ALL EXPRESS OR IMPLIED CONDITIONS, REPRESENTATIONS AND WARRANTIES, INCLUDING ANY IMPLIED WARRANTY OF MERCHANTABILITY, FITNESS FOR A PARTICULAR PURPOSE OR NON-INFRINGEMENT, ARE DISCLAIMED, EXCEPT TO THE EXTENT THAT SUCH DISCLAIMERS ARE HELD TO BE LEGALLY INVALID. SYMANTEC CORPORATION SHALL NOT BE LIABLE FOR INCIDENTAL OR CONSEQUENTIAL DAMAGES IN CONNECTION WITH THE FURNISHING, PERFORMANCE, OR USE OF THIS DOCUMENTATION. THE INFORMATION CONTAINED IN THIS DOCUMENTATION IS SUBJECT TO CHANGE WITHOUT NOTICE.

The Licensed Software and Documentation are deemed to be commercial computer software as defined in FAR 12.212 and subject to restricted rights as defined in FAR Section 52.227-19 "Commercial Computer Software - Restricted Rights" and DFARS 227.7202, "Rights in Commercial Computer Software or Commercial Computer Software Documentation", as applicable, and any successor regulations. Any use, modification, reproduction release, performance, display or disclosure of the Licensed Software and Documentation by the U.S. Government shall be solely in accordance with the terms of this Agreement.

Symantec Corporation
350 Ellis Street
Mountain View, CA 94043

<http://www.symantec.com>

Technical Support

Symantec Technical Support maintains support centers globally. Technical Support's primary role is to respond to specific queries about product features and functionality. The Technical Support group also creates content for our online Knowledge Base. The Technical Support group works collaboratively with the other functional areas within Symantec to answer your questions in a timely fashion. For example, the Technical Support group works with Product Engineering and Symantec Security Response to provide alerting services and virus definition updates.

Symantec's support offerings include the following:

- A range of support options that give you the flexibility to select the right amount of service for any size organization
- Telephone and/or Web-based support that provides rapid response and up-to-the-minute information
- Upgrade assurance that delivers software upgrades
- Global support purchased on a regional business hours or 24 hours a day, 7 days a week basis
- Premium service offerings that include Account Management Services

For information about Symantec's support offerings, you can visit our website at the following URL:

www.symantec.com/business/support/

All support services will be delivered in accordance with your support agreement and the then-current enterprise technical support policy.

Contacting Technical Support

Customers with a current support agreement may access Technical Support information at the following URL:

www.symantec.com/business/support/

Before contacting Technical Support, make sure you have satisfied the system requirements that are listed in your product documentation. Also, you should be at the computer on which the problem occurred, in case it is necessary to replicate the problem.

When you contact Technical Support, please have the following information available:

- Product release level
- Hardware information

- Available memory, disk space, and NIC information
- Operating system
- Version and patch level
- Network topology
- Router, gateway, and IP address information
- Problem description:
 - Error messages and log files
 - Troubleshooting that was performed before contacting Symantec
 - Recent software configuration changes and network changes

Licensing and registration

If your Symantec product requires registration or a license key, access our technical support Web page at the following URL:

www.symantec.com/business/support/

Customer service

Customer service information is available at the following URL:

www.symantec.com/business/support/

Customer Service is available to assist with non-technical questions, such as the following types of issues:

- Questions regarding product licensing or serialization
- Product registration updates, such as address or name changes
- General product information (features, language availability, local dealers)
- Latest information about product updates and upgrades
- Information about upgrade assurance and support contracts
- Information about the Symantec Buying Programs
- Advice about Symantec's technical support options
- Nontechnical presales questions
- Issues that are related to CD-ROMs, DVDs, or manuals

Support agreement resources

If you want to contact Symantec regarding an existing support agreement, please contact the support agreement administration team for your region as follows:

Asia-Pacific and Japan customercare_apac@symantec.com

Europe, Middle-East, and Africa semea@symantec.com

North America and Latin America supportsolutions@symantec.com

Contents

Technical Support	4
Chapter 1	Introduction to NetBackup for Informix 9
	Features of NetBackup for Informix 9
	About NetBackup for Informix 11
	About NetBackup for Informix terms 11
	Example NetBackup for Informix configuration 12
	About the Informix ON-bar utility and library 13
	How NetBackup for Informix works 13
Chapter 2	Installing NetBackup for Informix 15
	Planning the installation of NetBackup for Informix 15
	Verifying the operating system and platform compatibility for NetBackup for Informix 16
	NetBackup server and client requirements for NetBackup for Informix 16
	Informix server software requirements for NetBackup for Informix 17
	About license keys for NetBackup for Informix 17
	Specifying the Informix home path (UNIX) 18
	Adding new Informix instances 19
Chapter 3	Configuring NetBackup for Informix 20
	About configuring NetBackup for Informix 20
	About configuring a backup policy for an Informix database 21
	Adding a new NetBackup for Informix policy 22
	About policy attributes for NetBackup for Informix 23
	About adding schedules to a NetBackup for Informix policy 23
	Adding clients to a NetBackup for Informix policy 28
	About backup selections for an Informix client 28
	Configuring a Standard policy 30
	About NetBackup for Informix scripts 31
	Modifying NetBackup for Informix scripts 32
	About NetBackup for Informix environment variables 36
	Configuring an additional bp.conf file 37

	About permissions for NetBackup for Informix log files (UNIX)	38
	Configuring the Maximum jobs per client for NetBackup for Informix	38
	Performing a manual backup for a Informix-ON-Bar policy	39
Chapter 4	Performing backups and restores of Informix	41
	About using NetBackup for Informix	41
	About Informix ON-Bar backup types	42
	Example Informix backup strategy	42
	Automatic backup policy for Informix	43
	Manual backup policy for Informix	43
	Using the onbar command to perform a user-directed backup	43
	About browsing Informix backups	43
	Restoring files to the original client	44
	Redirecting an Informix restore to a different client	45
	Example of procedure for restoring an Informix database	48
Chapter 5	Troubleshooting	52
	Verifying the NetBackup for Informix configuration	52
	Verifying NetBackup for Informix log files	54
	Enabling the NetBackup for Informix logs	56
	About the NetBackup for Informix log files	57
	About the bphdb directory on the UNIX database client	57
	About the infxbsa directory on the UNIX database client	57
	About NetBackup server reports	57
	About Informix ON-Bar utility logs	58
	Setting the debug level on a NetBackup for SAP UNIX/Linux client	58
	Minimizing timeout failures on large database restores	58
	Minimizing loading and unloading of tapes for database backups for Windows and UNIX	59
	About deleting expired backups from the Informix backup database	60
	Informix versions XPS 8.x and IDS 9.x	60
	Informix version IDS 7.x	60
	Delays in completion of backup jobs	60
Index		61

Introduction to NetBackup for Informix

This chapter includes the following topics:

- [Features of NetBackup for Informix](#)
- [About NetBackup for Informix](#)
- [About NetBackup for Informix terms](#)
- [Example NetBackup for Informix configuration](#)
- [About the Informix ON-bar utility and library](#)
- [How NetBackup for Informix works](#)

Features of NetBackup for Informix

[Table 1-1](#) shows NetBackup for Informix's main features and introduces some terms used in this documentation.

Table 1-1 NetBackup for Informix features and descriptions

Feature	Description
Media and device management	All devices supported by Media Manager are available to NetBackup for Informix.

Table 1-1 NetBackup for Informix features and descriptions (*continued*)

Feature	Description
Scheduling facilities	<p>NetBackup scheduling facilities on the master server can be used to schedule automatic and unattended Informix backups.</p> <p>This feature also lets you choose the times when these operations can occur. For example, to prevent interference with normal daytime operations, you can schedule your database backups to occur only at night.</p>
Multiplexed backups and restores	<p>NetBackup for Informix lets you take advantage of NetBackup's multiplexing capabilities. Multiplexing directs multiple data streams to one backup device, thereby reducing the time necessary to complete the operation.</p>
Transparent Informix and regular file system backup and restore operations	<p>All backups and restores run simultaneously and transparently without any action from the NetBackup administrator.</p> <p>The database administrator can run database backup and restore operations through NetBackup. An administrator or any other authorized user can use NetBackup to run database backups and restores.</p> <p>Alternatively, you can use the Informix ON-Bar utility as if NetBackup were not present.</p>
Sharing the same storage units used for other file backups	<p>It is possible to share the same devices and media used for other backups or to give Informix exclusive use of certain devices and media. NetBackup for Informix can use Media Manager, disk, and PureDisk storage units.</p>
Centralized and networked backup operations	<p>From the NetBackup master server, you can schedule database backups or start them manually for any client. The Informix databases can also reside on hosts that are different from the devices on which NetBackup stores the backups.</p>
Graphical user interfaces	<p>NetBackup provides the following graphical user interfaces for client users and administrators:</p> <ul style="list-style-type: none">■ NetBackup Administration Console for Java■ NetBackup Administration Console for Windows <p>A database administrator or NetBackup administrator can start backup or restore operations for Informix from the NetBackup graphical user interface on the master server.</p>

Table 1-1 NetBackup for Informix features and descriptions (*continued*)

Feature	Description
Parallel backup and restore operations	NetBackup for Informix supports the parallel backup and restore capabilities of Informix ON-Bar. For example, this permits the user to run more than one tape device at a time for a single Informix backup or restore, thereby reducing the time necessary to complete the operation.
Compression	Compression increases backup performance over the network and reduces the size of the backup image that NetBackup writes to the storage unit.

About NetBackup for Informix

NetBackup for Informix integrates the database backup and recovery capabilities of the Informix ON-Bar utility with the backup and the recovery management capabilities of NetBackup and its media manager.

This topic introduces NetBackup for Informix, and it explains how this agent relates both to the Informix ON-Bar utility and NetBackup.

About NetBackup for Informix terms

[Table 1-2](#) lists the terms that may be new to an Informix database administrator or a NetBackup administrator.

Table 1-2 Terminology

Term	Meaning
Informix ON-Bar utility	The Informix ON-Bar utility lets database administrators back up and restore Informix databases on UNIX systems. However, this utility does not directly manage storage devices and media. The Informix ON-Bar utility must be integrated with a media management system that can access devices and keep information about the media used in Informix database backups. NetBackup for Informix provides this media-management capability by integrating the utility with NetBackup.
<code>onbar</code>	More information about this command is available. The <code>onbar</code> command starts a backup or restore with the Informix ON-Bar utility. See the <i>IBM Informix Backup and Restore Guide</i> .

Table 1-2 Terminology (*continued*)

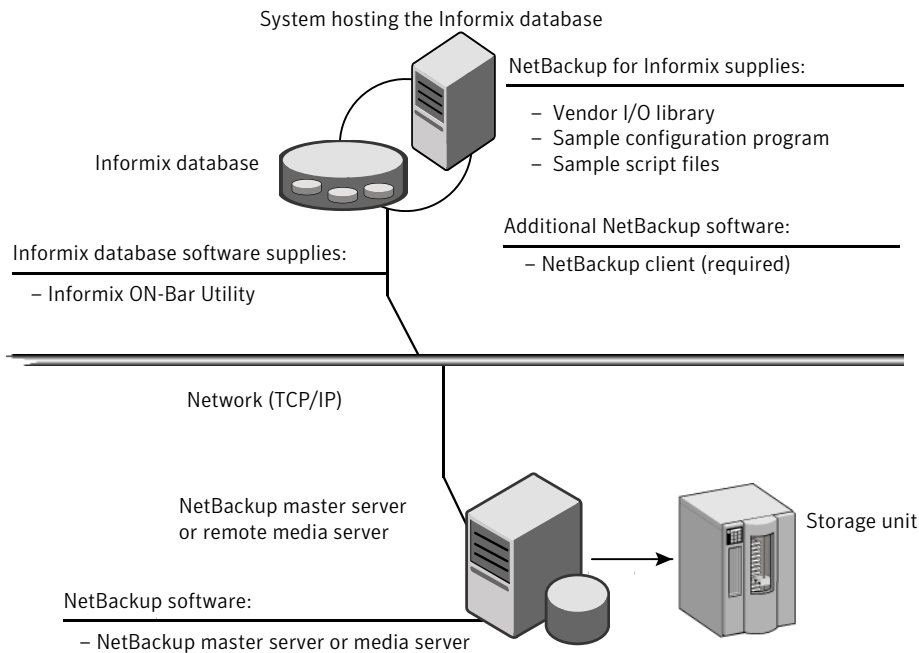
Term	Meaning
ON-Bar scripts	A Bourne-shell script that contains <code>onbar</code> commands.
<code>onmsmsync</code>	The <code>onmsmsync</code> utility is an Informix version XPS 8.x, IDS 9.x, and later feature that synchronizes the NetBackup catalog with the Informix backup catalog. The <code>onmsmsync</code> utility deletes images from both Informix backup catalogs and NetBackup catalogs. For more information, see your IBM Informix documentation.

Example NetBackup for Informix configuration

The server that hosts the Informix database must be a NetBackup client. It must have NetBackup for Informix and the Informix ON-Bar utility installed.

Figure 1-1 shows the major components in a NetBackup for Informix configuration.

Figure 1-1 Major components in a NetBackup for Informix configuration



About the Informix ON-bar utility and library

During a backup or restore, the Informix ON-Bar utility provides the interface to the databases and performs the actual extraction and insertion of data.

To start a database backup or restore, the database administrator runs a command called `onbar`. This command, which is part of the Informix ON-Bar utility, can be executed from the command line, from an ON-Bar script, or from an application such as NetBackup. An ON-Bar script includes the `onbar` command to be executed and defines the database objects to be backed up or restored.

During a backup or restore, the Informix ON-Bar utility controls the data streams going into or out of a database. To access the storage devices, this utility must be integrated with a media-management system such as the one provided by NetBackup and its Media Manager.

The `onbar` command is documented in the *IBM Informix Backup and Restore Guide*.

Instructions are available for how to find the supported Informix version level.

See [“Verifying the operating system and platform compatibility for NetBackup for Informix”](#) on page 16.

NetBackup for Informix has a special library that contains the functions necessary for the Informix ON-Bar utility to use NetBackup.

How NetBackup for Informix works

You can run an ON-Bar script in one of the following ways:

- Automatically, from the NetBackup scheduler
- From the NetBackup administration interface on the NetBackup master server
- From the command line on the NetBackup client

With the exception of the command-line method, a NetBackup process named `bphdb` starts the ON-Bar script on the client.

The following events occur for a backup:

- The `onbar` command starts the requested operation on the databases.
- If the process requires media to store backup data, `onbar` starts a user-directed backup by issuing a backup request.
- The NetBackup media server connects to ON-Bar through the NetBackup library on the client and transfers the database data to secondary storage.

A restore works in essentially the same manner except that `onbar` issues a restore request. This action causes NetBackup to retrieve the data from secondary storage and send it to NetBackup for Informix on the client.

The status for an ON-Bar operation is logged in the Informix `BAR_ACT_LOG`. A database administrator can use this log to determine if a backup or restore was successful.

NetBackup also logs status, but only for its own part of the operation. This debug log is located in the following directory:

```
/usr/opensv/netbackup/logs/infbsa
```

A database administrator cannot use NetBackup status to determine whether ON-Bar was successful because errors can occur in ON-Bar that do not affect NetBackup and are not recorded in its logs.

See [“About NetBackup for Informix scripts”](#) on page 31.

Installing NetBackup for Informix

This chapter includes the following topics:

- [Planning the installation of NetBackup for Informix](#)
- [Verifying the operating system and platform compatibility for NetBackup for Informix](#)
- [NetBackup server and client requirements for NetBackup for Informix](#)
- [Informix server software requirements for NetBackup for Informix](#)
- [About license keys for NetBackup for Informix](#)
- [Specifying the Informix home path \(UNIX \)](#)
- [Adding new Informix instances](#)

Planning the installation of NetBackup for Informix

[Table 2-1](#) shows the major installation steps needed to run NetBackup for Informix. Each step contains one or more links to pertinent procedures and concepts.

Table 2-1 Installation steps for NetBackup for Informix

Step	Action	Description
Step 1	Verify the installation prerequisites.	See “ Verifying the operating system and platform compatibility for NetBackup for Informix ” on page 16. See “ NetBackup server and client requirements for NetBackup for Informix ” on page 16. See “ Informix server software requirements for NetBackup for Informix ” on page 17.
Step 2	Add the license key for NetBackup for Informix.	See “ About license keys for NetBackup for Informix ” on page 17.
Step 3	Specify the Informix home path.	See “ Specifying the Informix home path (UNIX) ” on page 18.
Step 4	Add a new database instance.	See “ Adding new Informix instances ” on page 19.

Verifying the operating system and platform compatibility for NetBackup for Informix

Verify that the NetBackup for Informix agent is supported on your operating system or platform.

To verify operating system and compatibility

- 1 Go to the Symantec Support webpage:
<http://www.symantec.com/business/support/index.jsp>
- 2 Click on the link for **NetBackup Enterprise Server**.
- 3 In the list of documents, click on the following document:
[NetBackup Database Agent Compatibility List](#)

NetBackup server and client requirements for NetBackup for Informix

Verify that the following requirements are met for the NetBackup server:

- The NetBackup server software is installed and operational on the NetBackup server. The NetBackup server platform can be any that NetBackup supports. See the [NetBackup Installation Guide](#).

- Make sure that you configure any backup media that the storage unit uses. The number of media volumes that are required depends on several things:
 - The devices used and storage capacity of the media
 - The sizes of the databases that you want to back up
 - The amount of data that you want to archive
 - The size of your backups
 - The frequency of backups or archives
 - The length of retention of the backup imagesSee the [NetBackup Administrator's Guide, Volume I](#).

Verify that the following requirements are met for the NetBackup clients:

- The NetBackup client software is installed on the computer that has the databases you want to back up.

Informix server software requirements for NetBackup for Informix

Verify the following regarding the Informix server software on the NetBackup server or client:

- Informix server software must be installed and operational.
- One or more Informix instances must exist.

See "[NetBackup server and client requirements for NetBackup for Informix](#)" on page 16.

About license keys for NetBackup for Informix

The NetBackup for Informix agent is installed with the NetBackup client software. No separate installation is required. A valid license for the agent must exist on the master server.

More information is available on how to add license keys.

See the [NetBackup Administrator's Guide, Volume I](#).

Specifying the Informix home path (UNIX)

After you add the license key for NetBackup for Informix, run this script on the computer where the Informix vendor software is installed. With this script, NetBackup can gather additional information about your Informix environment.

Complete this procedure at the following times:

- If you licensed NetBackup for Informix for the first time.

To specify the Informix home path

- 1 Change to the following directory:

```
/usr/opensv/netbackup/bin
```

- 2 Run the following script:

```
./informix_config
```

- 3 Supply the home path for the database instance.

- 4 Verify the Informix ON-Bar configuration.

This script creates the following entry in the Informix instance home path's `etc/sm_versions` file for each client.

```
1|1.1.0|Veritas-NetBackup|1
```

All Informix versions later than 7.31 UC4 dynamically read the appropriate information from the `sm_versions` file every time a backup or restore is performed. If you use a release at this level, you do not need to edit any files.

- 5 If you use Informix version 7.31 UC4 and earlier, continue with the next step.
- 6 (Conditional) Perform this step if you use Informix version 7.31 UC4 and earlier. Update the `bar_version` table in the `sysutils` database.

Insert the following lines into the `bar_version` table in the `sysutils` database:

<code>bar_version</code>	<code>bsa_version</code>	<code>bar_sm</code>	<code>sm_version</code>
1	1.1.0	Veritas-NetBackup	1

- 7 Make sure `$BAR_BSALIB_PATH` is correctly linked to NetBackup's `infxbas.[so,sl,a]`.

See [“Verifying the NetBackup for Informix configuration”](#) on page 52.

- 8 Set the `BAR_RETRY` configuration parameter to 5.

The configuration parameter `BAR_RETRY` is used in the `$INFORMIXDIR/etc/$ONCONFIG` file. This parameter specifies the number of times ON-Bar attempts to back up or restore the storage space or logical log if the first attempt fails. Informix recommends setting `BAR_RETRY` to 5.

Adding new Informix instances

If you install a new Informix instance after you install NetBackup, you need to add this new instance to the NetBackup configuration. This action ensures that all new Informix instances are included in backup operations.

See [“Specifying the Informix home path \(UNIX \)”](#) on page 18.

Configuring NetBackup for Informix

This chapter includes the following topics:

- [About configuring NetBackup for Informix](#)
- [About configuring a backup policy for an Informix database](#)
- [About NetBackup for Informix scripts](#)
- [Configuring an additional bp.conf file](#)
- [About permissions for NetBackup for Informix log files \(UNIX\)](#)
- [Configuring the Maximum jobs per client for NetBackup for Informix](#)
- [Performing a manual backup for a Informix-ON-Bar policy](#)

About configuring NetBackup for Informix

Before you configure NetBackup for Informix, complete the installation procedure. After you complete the installation procedure, complete the procedures in [Table 3-1](#) to configure your environment.

Table 3-1 Steps to configure NetBackup for Informix

Step	Action	Description
Step 1	Configure a backup policy.	See “About configuring a backup policy for an Informix database” on page 21.

Table 3-1 Steps to configure NetBackup for Informix (*continued*)

Step	Action	Description
Step 2	Configure NetBackup for Informix scripts.	See “About NetBackup for Informix scripts” on page 31.
Step 3	Configure an additional bp.conf file.	See “Configuring an additional bp.conf file” on page 37.
Step 4	Configure permissions for log files on UNIX systems	See “About permissions for NetBackup for Informix log files (UNIX)” on page 38.
Step 5	Configure the Maximum jobs per client.	See “Configuring the Maximum jobs per client for NetBackup for Informix” on page 38.
Step 6	Test the configuration settings.	See “Performing a manual backup for a Informix-ON-Bar policy” on page 39.

About configuring a backup policy for an Informix database

A backup policy for a database defines the backup criteria for a specific group of one or more clients.

These criteria include the following:

- Storage unit and media to use
- Policy attributes
- Backup schedules
- Clients to be backed up
- The script files to run on the clients

To back up the database environment, define at least one Informix-ON-Bar policy with the appropriate schedules. A configuration can have a single policy that includes all clients, or there can be many policies, some of which include only one client.

In addition to the Informix-ON-Bar policy, back up the `$INFORMIXDIR/etc` files that are specified in the backup scripts. Define a Standard policy with a User Backup schedule type to back up these files.

Most requirements for database policies are the same as for file system backups. In addition to the policy attributes for this database agent, other attributes are available that you should consider.

See the [NetBackup Administrator's Guide, Volume I](#).

To add and configure a policy, see the following topics:

- See [“Adding a new NetBackup for Informix policy”](#) on page 22.
- See [“About policy attributes for NetBackup for Informix”](#) on page 23.
- See [“About adding schedules to a NetBackup for Informix policy”](#) on page 23.
- See [“Adding clients to a NetBackup for Informix policy”](#) on page 28.

Adding a new NetBackup for Informix policy

This topic describes how to add a new backup policy for a database.

To add a new NetBackup for Informix policy

- 1 Log on to the master server as administrator (Windows) or root (UNIX).
- 2 Start the NetBackup Administration Console.
- 3 If your site has more than one master server, choose the one on which you want to add the policy.
- 4 In the NetBackup Administration Console, select **NetBackup Management > Policies**. Then select **Actions > New > New Policy**.
- 5 In the **Add a New Policy** dialog box, in the **Policy name** box, type a unique name for the new policy.
- 6 Click **OK**.
- 7 In the **Add New Policy** dialog box, in the **Policy type** list, select **Informix-ON-Bar**.

The database agent policy type does not appear in the drop-down list unless your master server has a license key for the database agent.

- 8 Complete the entries on the **Attributes** tab.
See [“About policy attributes for NetBackup for Informix”](#) on page 23.
- 9 Add other policy information as follows:
 - Add schedules.
See [“About adding schedules to a NetBackup for Informix policy”](#) on page 23.
 - Add clients.

- See [“Adding clients to a NetBackup for Informix policy”](#) on page 28.
 - Add scripts to the backup selections list.
 See [“About backup selections for an Informix client”](#) on page 28.
- 10 When you have added all the schedules, clients, and backup selections you need, click **OK**.

About policy attributes for NetBackup for Informix

With a few exceptions, NetBackup manages a database backup like a file system backup. Other policy attributes vary according to your specific backup strategy and system configuration.

For more information on policy attributes, see the [NetBackup Administrator’s Guide, Volume I](#). [Table 3-2](#) describes the policy attributes available for a NetBackup for Informix policy.

Table 3-2 Policy attribute descriptions for NetBackup for Informix policies

Attribute	Description
Policy type	Determines the types of clients that can be in the policy. In some cases the policy type determines the types of backups that NetBackup can perform on those clients. To use the Informix database agent, you must define at least one policy of type that is Informix-ON-Bar.
Keyword phrase	For NetBackup for Informix, the Keyword phrase entry is ignored. However, it can be set using the environment variable <code>INFXB_SA_KEYWORD</code> . See “About NetBackup for Informix environment variables” on page 36.

About adding schedules to a NetBackup for Informix policy

Each policy has its own set of schedules. These schedules initiate automatic backups and specify when a user can initiate operations. A database backup has these types of schedules: application backup and automatic backup.

Configuring a NetBackup for Informix application backup schedule

A database backup requires an application backup schedule. You cannot perform backups if this type of schedule is not included in the policy. The NetBackup for Informix agent automatically creates this schedule and names it **Default-Application-Backup**.

The backup window for an application backup schedule must encompass the time period during which all scheduled jobs and client-initiated jobs can occur. This

window is necessary because the application backup schedule accepts the backup request from NetBackup for SAP regardless of whether the backup was initiated from an automatic schedule or from the client. You can choose to set the window for the application backup schedule for 24 hours per day, seven days per week. This window ensures that your operations are never locked out due to the application backup schedule.

To configure an application backup schedule

- 1 In the **Policy** dialog box, click the **Schedules** tab.
 To access the **Policy** dialog box, double-click the policy name in the **Policies** list in the NetBackup Administration Console .
- 2 Double-click the schedule that is named **Default-Application-Backup**.
- 3 Specify the other properties for the schedule.
 See [“About NetBackup for Informix schedule properties”](#) on page 26.

Example application backup schedule for NetBackup for Informix

Note: (Optional) Specify the application backup schedule name in the `bp.conf` file on the client.

See [“Configuring an additional bp.conf file”](#) on page 37.

Assume the following:

- Users perform database backup operations during business hours, 08:00 to 13:00.
- The automatic backups that use this policy start between 18:00 and 22:00.

In this scenario, the application backup schedule must have a start time of 0800 and a duration of 14 hours. Alternatively, the schedule can have two windows each day; one with a start time of 0800 and duration of 5 hours, and another with a start time of 1800 and a duration of 4 hours.

Table 3-3 Example settings for a NetBackup for Informix application backup schedule

Schedule option	Setting
Retention	2 weeks

Table 3-3 Example settings for a NetBackup for Informix application backup schedule (*continued*)

Schedule option	Setting
Backup window	Sunday through Saturday 00:08:00 - 22:00:00

Configuring NetBackup for Informix automatic backup schedules

If you plan to have NetBackup perform automatic scheduled backups, you need one or more automatic backup schedules.

To configure an automatic backup schedule

- 1 On the **Policy** dialog box, click the **Schedules** tab.
- 2 Click **New**.
- 3 Specify a unique name for the schedule.
- 4 Select the **Type of backup**.
See [“NetBackup for Informix backup types”](#) on page 26.
- 5 Specify the other properties for the schedule.
See [“About NetBackup for Informix schedule properties”](#) on page 26.
- 6 Click **OK**.

Example automatic backup schedule for NetBackup for Informix

[Table 3-4](#) shows example settings for automatic backup schedules.

Table 3-4 Example settings for NetBackup for Informix automatic backup schedules

Type of backup	Schedule property	Setting
Automatic Full Backup	Retention	2 weeks
	Frequency	Every week
	Backup window	Sunday, 18:00:00 - 22:00:00
Automatic Incremental Backup	Retention	1 week
	Frequency	Every day

Table 3-4 Example settings for NetBackup for Informix automatic backup schedules (*continued*)

Type of backup	Schedule property	Setting
	Backup window	Sunday through Saturday 18:00:00 - 22:00:00

NetBackup for Informix backup types

Table 3-5 shows the backup schedules you can specify.

Table 3-5 Informix backup types

Backup type	Description
Application Backup	The Application Backup schedule enables user-controlled NetBackup operations from the client. These operations include those initiated from the client and those initiated by an automatic schedule on the master server. NetBackup uses the Application Backup schedule when the user starts a backup manually. Configure at least one Application Backup schedule for each database policy. The Default-Application-Backup schedule is configured automatically as an Application Backup schedule.
Automatic Full Backup	An Automatic Full Backup copies all blocks into the backup set. It skips only the data file blocks that have never been used. Note that a full backup is not the same as a whole database backup; full is an indicator that the backup is not incremental. This type of backup corresponds to an Informix Level-0 backup, which is a baseline backup.
Automatic Incremental Backup	An Automatic Incremental Backup is a backup of only those blocks that have changed since the last Automatic Full (baseline) backup. This kind of backup takes less time and space than a full backup because the Automatic Incremental Backup contains only the changed data. This type of backup corresponds to an Informix Level-1 backup.

About NetBackup for Informix schedule properties

This topic describes the schedule properties that have a different meaning for database backups than for file system backups. Other schedule properties vary according to your specific backup strategy and system configuration. Additional information about other schedule properties is available.

See the [NetBackup Administrator's Guide, Volume I](#).

Table 3-6 Description of schedule properties

Property	Description
Type of backup	<p>Specifies the type of backup that this schedule controls. The selection list shows only the backup types that apply to the policy you want to configure.</p> <p>See "NetBackup for Informix backup types" on page 26.</p>
Schedule type	<p>You can schedule a backup in one of the following ways:</p> <ul style="list-style-type: none"> ■ Frequency This setting is used only for automatic schedules. It is not used for application schedules. Frequency specifies the period of time that can elapse until the next backup operation begins on this schedule. For example, assume that the frequency is seven days and a successful backup occurs on Wednesday. The next full backup does not occur until the following Wednesday. Typically, incremental backups have a shorter frequency than full backups. ■ Calendar This setting is used only for schedules. It is not used for application schedules. The Calendar option allows you to schedule backup operations that are based on specific dates, recurring week days, or recurring days of the month.
Retention	<p>The retention period for an application backup schedule refers to the length of time that NetBackup keeps the non-snapshot SAP backup images. The retention period for an automatic schedule controls how long NetBackup keeps records of when automatic backups occurred. For example, if your database is backed up once every Sunday morning, you should select a retention period of at least 2 weeks.</p> <p>The retention period is affected by the scheduling type selected, as follows:</p> <ul style="list-style-type: none"> ■ Frequency-based scheduling Set a retention period that is longer than the frequency setting for the schedule. For example, if the frequency setting is set to one week, set the retention period to be more than one week. The NetBackup scheduler compares the latest record of the automatic backup schedule to the frequency of that automatic backup schedule to determine whether a backup is due. This means that if you set the retention period to expire the record too early, the scheduled backup frequency is unpredictable. However, if you set the retention period to be longer than necessary, the NetBackup catalog accumulates unnecessary records. ■ Calendar-based scheduling The retention period setting is not significant for calendar-based scheduling. <p>Note: If using Snapshot Client, the retention on the automatic schedule also determines how long the SAP phase 1 backup of the database files is retained.</p>

Table 3-6 Description of schedule properties (*continued*)

Property	Description
Multiple copies	If you want to specify multiple copies of a backup for the policy, configure Multiple copies on the application backup schedule. If using Snapshot Client, also specify Multiple copies on the automatic schedule.

Adding clients to a NetBackup for Informix policy

The client list contains a list of the clients on which your scripts are run during an automatic backup, and/or the clients that can send backup requests to the application schedule. A NetBackup client must be in at least one policy but can be in more than one.

For a NetBackup for Informix policy, clients you want to add must have the following software installed:

- Informix
- NetBackup client or server
- The backup or restore script(s)

To add clients to a NetBackup for Informix policy

- 1 To access the **Policy** dialog box, double-click the policy name in the **Policies** list in the NetBackup Administration Console.
- 2 In the **Policy** dialog box, click the **Clients** tab.
- 3 Click **New**.
- 4 Type the name of the client and press **Enter** (Windows) or click **Add** (Java).
If Informix is installed in a cluster, specify the virtual Informix name as the client name.
- 5 (Windows) To add another client, repeat step 3 and step 4.
- 6 (Java) To add another client, repeat step 4.
- 7 If this client is the last client you want to add, click **OK**.
- 8 (Java) In the **Policy** dialog box, click **Close**.

About backup selections for an Informix client

The backup selections list in a database policy is different from the list in non-database policies. For example, in a Standard or MS-Windows policy, the list contains files and directories to be backed up. In a database policy, you specify scripts to be run.

About NetBackup for Informix scripts rules

Observe the following when you use scripts:

- Make sure that the scripts reside on each client in the client list and in the same location as otherwise they fail to execute on every client. Make sure that NetBackup has permission access the location you choose and that NetBackup can run the scripts.
- NetBackup installs sample scripts when you install the software; you can modify these scripts for your own use. Be sure to rename the scripts or copy the scripts to a location outside of the original installation location. This ensures that future NetBackup upgrades do not overwrite the SAP instance-specific modification that you are required to make before using the scripts.
- If you use NetBackup for Informix in a cluster, make sure that the scripts reside in a location that is available after a failover.

Add scripts to the backup selections list only if you want to set up a policy for automatic backups. These scripts are run for automatic backup schedules. NetBackup runs the scripts in the order that the scripts appear in the backup selections list.

See [“About NetBackup for Informix scripts”](#) on page 31.

Adding NetBackup for Informix scripts to the backup selections list

The following procedures describe how to add scripts to the backup selections list with both the Java interface and the Windows interface. Review the information on backup scripts if necessary.

Note: Be sure to specify the correct script names in the backup selections list to prevent an error or possibly a wrong operation. Make sure that the script resides on the client before you try to add it to the backup selections list.

To add NetBackup for Informix scripts to the backup selections list from the Java interface

- 1 Open the **Policy** dialog box.
To access the **Policy** dialog box, double-click the policy name in the Policies list in the NetBackup Administration Console.
- 2 Click the **Backup Selections** tab.
- 3 Click **New**.

- 4 In the **Script** box, type the full path name of a script on the client.

For example:

```
/backup_scripts/db/cold_backup.sh
```

- 5 Click **Add** to add the script to the list.
- 6 Click **OK**.

To add NetBackup for Informix scripts to the backup selections list from the Windows interface

- 1 In the **Policy** dialog box, click the **Backup Selections** tab.

To access the **Policy** dialog box, double-click the policy name in the Policies list in the NetBackup Administration Console.

- 2 Click **New**.
- 3 Specify the names of the scripts you want NetBackup to use.

Use one of the following methods:

- Type the full path name of the script on the client. For example:

```
/backup_scripts/db/cold_backup.sh
```

- Click the **Remote Folder** button.



- 4 Navigate to and select the script file, then click **OK**.
- 5 Click **OK**.

Configuring a Standard policy

In addition to the Informix policy, you also must configure a Standard type policy. A Standard policy enables the backup of the `$INFORMIXDIR/etc` files that is specified in the scripts.

Note the following:

- You must specify the name of the policy in the backup scripts that you modify on the client.
- You do not need to configure a file list for this policy because the policy uses a User Backup type schedule.

To configure a Standard policy

- 1 Add a new policy.
See "Configuring a NetBackup Policy."
- 2 Specify the general attributes for the policy.
 - Select **Standard** for the policy type.
 - Specify other attributes as desired.

- 3 Add a schedule.
Provide the following information.

Name	Type the name of your schedule.
Type of Backup	Select User Backup . A User Backup schedule enables user controlled NetBackup operations performed on the client.
Retention	Set the time period that is needed to retain two full backups of your database. For example, if your database is backed up once every Sunday morning, select a retention period of at least two weeks.
Start Window	Set the time of day when you want backup operations to be available to the user. Set this window to the same time periods as the Application Backup schedule in the Informix-ON-Bar policy.

- 4 Specify the clients to be backed up.
The client must have both Informix and NetBackup for Informix installed.
- 5 Click **OK**.

About NetBackup for Informix scripts

The NetBackup installation software writes Informix scripts to the following directory:

```
/usr/opensv/netbackup/ext/db_ext/informix/scripts
```

For more information on ON-Bar scripts, see your Informix documentation.

Be sure to modify these scripts for your environment. Although each script can perform multiple ON-Bar operations, each type of operation requires a separate script. For example, you need separate scripts for backups and restores.

Note: Always specify the correct script when you configure automatic backups or when you start operations through NetBackup. NetBackup for Informix does not generate an error if a restore script is used for a backup operation or a backup script is used for a restore operation.

The NetBackup for Informix installation software includes the following example scripts:

- `informix_dbspace_list`
- `informix_logical_log_backup`
- `informix_onbar_backup_of_dbspace1`
- `informix_onbar_backup_of_rootdbs`
- `informix_onbar_backup_of_rootdbs_and_dbspace1`
- `informix_onbar_backup_using_file_list`
- `informix_onbar_restore_dbspace1`
- `informix_onbar_restore_rootdbs`
- `infx_remove_expired_backup`

Modifying NetBackup for Informix scripts

The following procedure shows how to modify a script. Repeat this procedure for each script that you modify.

To modify NetBackup for Informix scripts

- 1 Copy the example scripts from `/usr/openv/netbackup/ext/db_ext/informix/scripts` to a different location on your client.

The Informix scripts can reside anywhere on the client. Do not store your scripts in the sample directory because your modifications are lost if you upgrade or reinstall. Always relocate your scripts to a safe location. In a NetBackup cluster, the script must be available after a failover.

- 2 Enable proper permissions on the script files so NetBackup can access the script files.

Set the access permissions of the scripts to `775`. For example:

```
chmod 775 script_name
```


- 3 Open the script file with a text editor.

For example, use the following command to modify the

`informix_onbar_backup_of_rootdbs` script:

```
vi informix_onbar_backup_of_rootdbs
```

4 Modify the script according to the instructions in the file.

Customize the scripts to reflect your Informix installation. Refer to the comments in the scripts that indicate "Replace". The scripts need to be modified to have the correct Informix home path and Informix server name. The scripts also must include the policy that you want to use to back up the files and the name of the Informix configuration file.

For example, the `informix_onbar_backup_of_rootdbs` script contains the following lines:

```
#!/bin/sh

# Replace xxxxx below with the extension used for your onconfig file.
ONCONFIG=onconfig.xxxxx

# Replace yyyyy below with the Informix home path.
INFORMIXDIR=/yyyyy/informix

# Replace zzzzz below with the name of the Informix server.
INFORMIXSERVER=zzzzz

# Replace informix_etc below with the name of the NetBackup server policy
# to be used to back up the $INFORMIXDIR/etc directory.
INFX_ETC_POLICY=informix_etc

echo "Started `date`"

export ONCONFIG
echo "exported ONCONFIG"

export INFORMIXDIR
echo "exported INFORMIXDIR"

export INFORMIXSERVER
echo "exported INFORMIXSERVER"

echo "INFXBSA_SERVER = $INFXBSA_SERVER"
echo "INFXBSA_SCHEDULED = $INFXBSA_SCHEDULED"
echo "INFXBSA_USER_INITIATED = $INFXBSA_USER_INITIATED"
echo "INFXBSA_FULL = $INFXBSA_FULL"
echo "INFXBSA_INCR = $INFXBSA_INCR"
echo "INFXBSA_POLICY = $INFXBSA_POLICY"
```

```
RETURN_STATUS=0

if [ "${INFXBSA_INCR}" = "1" ]
then
    # Netbackup has started an incremental backup.
    echo "$INFORMIXDIR/bin/onbar -b -L 1 rootdbs"
    $INFORMIXDIR/bin/onbar -b -L 1 rootdbs
    RETURN_STATUS=$?
else

    echo "$INFORMIXDIR/bin/onbar -b -L 0 rootdbs"
    $INFORMIXDIR/bin/onbar -b -L 0 rootdbs
    RETURN_STATUS=$?

fi

if [ "$RETURN_STATUS" -eq "0" ]
then

    # Initiate a backup of the directory that contains the onconfig,
    # sqlhosts, oncfg_$INFORMIXSERVER.SERVERTYPE, and ixbar.SERVERTYPE
    # files after doing the backup.

    echo "bpbackup -p $INFX_ETC_POLICY -w 0 $INFORMIXDIR/etc"
    /usr/openv/netbackup/bin/bpbackup -p $INFX_ETC_POLICY -w 0 $INFORMIXDIR/etc
    BPBACKUP_STATUS=$?

    if [ "$BPBACKUP_STATUS" -ne "0" ]
    then
        echo ""
        echo "bpbackup of $INFORMIXDIR/etc returned $BPBACKUP_STATUS"
    fi
fi

echo "Finished `date`"

echo "exit $RETURN_STATUS"
echo ""
```

```
exit $RETURN_STATUS
```

5 Test the scripts that you created.

More information is available on how to test your configuration.

See [“Performing a manual backup for a Informix-ON-Bar policy”](#) on page 39.

About NetBackup for Informix environment variables

When a schedule runs, NetBackup sets environment variables for the local shell scripts to use when it performs the backup. The `echo` lines are used to show what Informix environment variables are available.

You can use the Informix environment variables in the following lists to perform conditional functions inside the scripts. These variables are local to the Informix shell script.

NetBackup sets the following variables:

<code>INFXBSA_FULL</code>	Set to 1 if this backup is a full backup (Automatic Full Backup).
<code>INFXBSA_INCR</code>	Set to 1 if this backup is an incremental backup (Automatic Incremental Backup).
<code>INFXBSA_SCHEDULED</code>	Set to 1 if this backup is a scheduled backup (Automatic Full Backup or Automatic Incremental Backup).
<code>INFXBSA_USER_INITIATED</code>	Set to 1 if this backup is a user-initiated backup (Application Backup backup).

The Informix user can set the following variables either in the script or manually from the command line in the same environment from which `onbar` is issued:

<code>INFXBSA_SERVER</code>	Name of the NetBackup server.
<code>INFXBSA_LOGICAL_POLICY</code>	Name of the policy to be used for a logical logs backup. If this variable is set, NetBackup backs up the logical logs with this policy.
<code>INFXBSA_LOGICAL_SCHED</code>	Name of the schedule to be used for a logical logs backup. If this variable is set, NetBackup distinguishes and backs up logical logs with this schedule.

INFXBSA_POLICY	Name of the Informix-ON-Bar policy. If this variable is set, NetBackup backs up Informix databases with this policy.
INFXBSA_SCHED	Name of the Application Backup schedule. If this variable is set, NetBackup backs up Informix databases with this schedule.
INFXBSA_KEYWORD	The keyword phrase you want to associate with a backup image.

Configuring an additional bp.conf file

The administrator can add options to the NetBackup `bp.conf` file on the NetBackup master server. The administrator can create an additional `bp.conf` file in the home directory of the Informix user's account used for the backup or restore.

Before you use NetBackup for Informix, you can create a `bp.conf` file in the home directory of the Informix user's account used for the backup on the NetBackup client. The path to this directory can be equal to the value of the `$INFORMIXDIR` variable.

For example, if the home directory is `/informix`, the path is as follows:

```
/informix/bp.conf
```

After you create a `bp.conf` file in the Informix home directory, add the following options to the file and replace the italicized text with the information that pertains to the client:

```
BPBACKUP_POLICY=informix_policy
BPBACKUP_SCHED=informix_sched
SERVER=server_name
CLIENT_READ_TIMEOUT=1800
```

The variables are as follows:

<i>informix_policy</i>	The name of the Informix-ON-Bar policy that was configured in the backup policy. See “About configuring a backup policy for an Informix database” on page 21.
<i>informix_sched</i>	The schedule name for the <i>informix_policy</i> . By default, it is Default-Application-Backup.
<i>server_name</i>	The name of the NetBackup master server.

NetBackup uses the `bp.conf` file in the Informix user's home directory only for backups and restores initiated by this Informix user.

About permissions for NetBackup for Informix log files (UNIX)

NetBackup uses the `/usr/opensv/netbackup/logs` directory tree not only for the recording of troubleshooting information, but for progress and communication updates to users and other NetBackup applications. Restrictive permissions on these directories can not only disable the collection of troubleshooting data, but also prevent the application itself from functioning correctly.

Backup and restore operations fail when permissions are too restrictive. We recommend that you make all of the `usr/opensv/netbackup/logs` directories and subdirectories readable and writeable by all users (777 permissions). However, security requirements may prohibit global read-write access. If so, you can restrict permissions of specific directories to a single group or user if the following is true: Processes that run as a part of a group or as a user initiate all backup and restore operations that are related to that directory.

Check that the `/usr/opensv/netbackup/logs/user_ops` directory tree has 777 permissions. The items in this directory need to be accessible for the applications to operate correctly.

Configuring the Maximum jobs per client for NetBackup for Informix

The following procedure shows how to set the **Maximum jobs per client** attribute.

To configure the maximum jobs per client

- 1 In the left pane of the NetBackup Administration Console, expand **NetBackup Management > Host Properties**.
- 2 Select **Master Server**.
- 3 In the right pane, double-click the server icon.
- 4 Click **Global Attributes**.
- 5 Change the **Maximum jobs per client** value to 99.

The **Maximum jobs per client** specifies the maximum number of concurrent backups that are allowed per client. The default is 1.

You can use the following formula to calculate a smaller value for the Maximum jobs per client setting:

Maximum jobs per client = *number_of_streams* X *number_of_policies*

Refer to the following definitions:

number_of_streams The number of backup streams between the database server and NetBackup. Each separate stream starts a new backup job on the client.

number_of_policies The number of policies of any type that can back up this client at the same time. This number can be greater than one. For example, a client can be in two policies to back up two different databases. These backup windows can overlap.

Note: Enter a large enough value for the **Maximum jobs per client** attribute to meet the number of jobs that Informix runs. You may need to experiment with different values at your site.

Performing a manual backup for a Informix-ON-Bar policy

After you configure the servers and clients in your environment, you can test the configuration settings with a manual backup. Perform a manual backup (or backups) with the automatic backup schedules you created. A description of status codes and other troubleshooting information is available.

See the [NetBackup Status Codes Reference Guide](#).

See the [NetBackup Troubleshooting Guide](#).

To perform a manual backup

- 1 Log onto the master server as administrator (Windows) or root (UNIX).
- 2 Start the NetBackup Administration Console.
- 3 In the left pane, click **Policies**.
- 4 Click the policy you want to test.
- 5 Select **Actions > Manual Backup**.

The **Schedules** pane contains the name of an automatic schedule (or schedules) configured for the policy that you want to test. The **Clients** pane contains the name of the client(s) listed in the policy that you want to test.

- 6 Follow the directions in the **Manual Backup** dialog box.
- 7 To check the status of the backup, click **Activity Monitor** in the NetBackup Administration Console.

The Activity Monitor and the script output indicate the status of the backup operation.

Performing backups and restores of Informix

This chapter includes the following topics:

- [About using NetBackup for Informix](#)
- [About Informix ON-Bar backup types](#)
- [Example Informix backup strategy](#)
- [Automatic backup policy for Informix](#)
- [Manual backup policy for Informix](#)
- [Using the onbar command to perform a user-directed backup](#)
- [About browsing Informix backups](#)
- [Restoring files to the original client](#)
- [Redirecting an Informix restore to a different client](#)
- [Example of procedure for restoring an Informix database](#)

About using NetBackup for Informix

When all installation and configuration are complete, you can start Informix backups and restores through NetBackup or run the `onbar` command directly.

Always specify the correct ON-Bar script when configuring automatic backups or when starting operations through NetBackup. NetBackup for Informix does not generate an error if a restore ON-Bar script file is used for a backup operation or a backup ON-Bar script is used for a restore operation.

About Informix ON-Bar backup types

The Informix ON-Bar utility supports different types of backups.

Table 4-1 describes each backup type.

Table 4-1 Informix ON-Bar backup types

Backup type	Description
Level 0 backup (Full)	An Informix level 0 backup is a full backup. It includes all the records in the selected dbspaces and is the only type of backup that allows a complete restore without performing any recovery steps.
Level 1 backup (Incremental)	An Informix level 1 backup is an incremental backup. It backs up the records that changed since the last level 0 backup in the selected dbspaces.
Level 2 backup	An Informix level 2 backup backs up the records that changed since the last Level 1 Backup in the selected dbspaces. NetBackup does not support this type of backup with an equivalent automatic schedule. To perform level 2 backups write a script and by keep track of the previous backup type with the ON-Bar script.
Logical-log backup	An Informix logical-log backup backs up the filled logical logs. By using the Informix <code>ALARMPROGRAM</code> configuration option, these backups can be started on demand when the logical logs fill.

For more information, see your Informix documentation.

Example Informix backup strategy

The backup strategy in the following example is for a database that requires frequent backups to provide protection against disk failure.

This strategy is as follows:

- Perform an Informix full backup (level 0) every Friday night.
This backs up the selected dbspaces.
- Perform an Informix incremental backup (level 1) each night.
- Back up the `$(INFORMIXDIR)/etc` directory once a day.
The sample scripts that NetBackup for Informix installs by default include parameters to back up the `$(INFORMIXDIR)/etc` directory after each full or each incremental backup.

- Configure the Informix `ALARMPROGRAM` to start a logical-log backup as the logs fill.
If you do not want to wait for log files to fill, you can set up a separate NetBackup policy and then schedule a full logical-log backup to occur as often as necessary. Have a good strategy for backing up logical-log files because they are needed for database recovery.

Automatic backup policy for Informix

The most convenient way to back up your database is to set up schedules for automatic backups.

When the NetBackup scheduler invokes a schedule for an automatic backup, the ON-Bar scripts run as follows:

- In the same order as they appear in the file list
- On all clients that have them (that is, matching path names)

The ON-Bar scripts start the database backup.

Instructions for how to add a new schedule or change an existing schedule for automatic backups are available.

Manual backup policy for Informix

The administrator on the master server can use the NetBackup server software to manually execute an Automatic Backup schedule for the Informix-ON-Bar policy.

Using the `onbar` command to perform a user-directed backup

You can run the `onbar` command from the UNIX command line on the client to start a backup.

About browsing Informix backups

Use the `bplist` command to browse the Informix backup history on the master server. The result is the list of dump file names. The following example assumes that the root user issued the `bplist(1M)` command from the NetBackup master server to search all Informix backups for a client named `cabbage`:

```
bplist -C cabbage -t 6 -R /legohead  
/legohead/0/18  
/legohead/0/17  
/legohead/0/17  
/legohead/rootdbs/0  
/legohead/0/17  
/legohead/0/17  
/legohead/0/17  
/legohead/0/16  
/legohead/rootdbs/0
```

The `-t 6` on this command specifies the Informix backups (dumps). Alternatively, you can specify `-t 0` to browse the backups of files in the `$(INFORMIXDIR)/etc` files. For more information on this command, see the `bplist(1M)` man page.

Restoring files to the original client

Start all restores from the NetBackup for Informix client. A backup must have completed successfully before a restore is started. Otherwise, an error message is generated.

To perform a user-directed restore, use the `onbar` command from the UNIX command line on the client.

Note: You cannot run restore operations from the server.

To restore files to the original client

- 1 Before you replace any disks that have failed, salvage the logical-log files.

Use the following command:

```
onbar -l -s
```

- 2 (Conditional) Determine whether you need to restore the `$(ONCONFIG)` file, `sqlhosts` file, emergency boot file, or the `oncfg_$(INFORMIXSERVER).$(SERVERNUM)` file.

If you need to restore these files, use the NetBackup Administration Console, as follows:

- Change to the `$(INFORMIXDIR)/etc` directory.

Use the following command:

```
cd $(INFORMIXDIR)/etc
```

- Start the Java interface:
Use the following command:

```
/usr/opensv/netbackup/bin/jbpSA &
```
 - Select the files to restore and start the restore.
- 3 Use `onbar` to physically restore the damaged dbspaces.

For example:

```
onbar -r -p dbspace1 dbspace2
```

- 4 Use `onbar` to logically restore the dbspaces that you physically restored.

For example:

```
onbar -r -l
```

Redirecting an Informix restore to a different client

You have the option to restore an Informix database to a client other than the one that originally supplied the backup. This process of restoring data to a different client is called a redirected restore.

To perform a redirected restore, the following conditions must be present:

- The source and the destination clients must have identical operating system versions and bit levels.
- The source and the destination clients must have identical Informix database versions.
- The Informix ownerId, Informix groupId, and Informix home must be identical on the source and on the destination clients.

For more information on redirected restores, see the [NetBackup Administrator's Guide, Volume I](#).

To redirect an Informix restore to a different client

- 1 Configure the NetBackup server to allow redirected restores. You must be the NetBackup administrator to perform these tasks.

Create one of the following files:

- To remove restrictions for all clients, create the following file on the NetBackup master server:

```
/usr/opensv/netbackup/db/altnames/No.Restrictions
```

Take care when using the `No.Restrictions` file. This file permits the root user of any client to browse and restore backups from any other client.

- To restrict clients to restore only from certain other clients, create the following file on the NetBackup master server:

```
/usr/opensv/netbackup/db/altnames/client_name
```

For *client_name*, specify the name of the client that is allowed to perform the redirected restore. Add the name of the NetBackup for Informix source client to that file.

- 2 Back up the logical logs on the NetBackup for Informix source client.

A logical log contains records of all the database activity that occurs between backups. These records contain all the database transactions that have taken place after the last backup.

Log into the source client as Informix ownerId and issue the following command:

```
onbar -b -l
```

- 3 If the source client database server is down, salvage the logical logs.

This command backs up any logical logs that have not yet been backed up and are not corrupted or destroyed.

Log into the source client as Informix ownerId and issue the following command:

```
onbar -l -s
```

- 4 Shut down the Informix database server on both the source client and the destination client.

Issue one of the following commands:

- For Informix Dynamic Server:

```
onmode -ky
```

- For Extended Parallel Server:

```
xctl onmode -ky
```

- 5 On the NetBackup for Informix destination client, back up the files that reside in the `$INFORMIXDIR/etc` directory to preserve the original configuration. The following steps overwrite files in this directory.

- 6 Copy configuration and informational files in the `$INFORMIXDIR/etc` directory from the NetBackup for Informix source client to the `$INFORMIXDIR/etc` directory on the NetBackup for Informix destination client.

You can use `ftp(1)` to copy files from the source client to the destination client.

- Copy the emergency or the backup boot files.
 For the Informix Dynamic Server, the emergency boot file is
`$INFORMIXDIR/etc/ixbar.servernum`.
 For the Extended Parallel Server, the backup boot file is
`$INFORMIXDIR/etc/Bixbar_hostname.servernum`.
 For *servernum*, specify the value of the `SERVERNUM` configuration parameter that is specified in the `$INFORMIXDIR/etc/$ONCONFIG` file.
- Copy the connectivity information file, `$INFORMIXDIR/etc/sqlhosts`, which specifies how the client application finds and connects to an Informix database server .
- Copy the database configuration file that the environment variable `ONCONFIG` specifies. This file is located in the `$INFORMIXDIR/etc` directory.
- Copy the files that the Informix database server creates and updates every time a `dbspace`, `blobspace`, logical-log file, or chunk is added or deleted.
 For Informix Dynamic Server, this file is
`$INFORMIXDIR/etc/oncfg_servername.servernum`
 For Extended Parallel Server and for each coserver this file is
`$INFORMIXDIR/etc/oncfg_servername.servernum.coserverid`
 The variables are as follows:

<i>servernum</i>	The value of the <code>SERVERNUM</code> configuration.
<i>servername</i>	The value of the <code>DBSERVERNAME</code> configuration.
<i>coserverid</i>	The ID of the coserver.

- (Conditional) Copy file `xcfg_servername.servernum`.
 Perform this step if you use the Extended Parallel Server. File `xcfg_servername.servernum` contains information about coserver location and `dbslice` definition.
 In the file name, the variables are as follows:

<i>servernum</i>	The value of the <code>SERVERNUM</code> configuration.
<i>servername</i>	The value of the <code>DBSERVERNAME</code> configuration.

- 7 Configure the NetBackup for Informix destination client.
 - Set the `INFXBSA_CLIENT` environment variable to the host name of the source client.
 - (Conditional) Set the `INFXBSA_SERVER` environment variable to the NetBackup master server that is used for the source client backup. Perform this step if the NetBackup master server that is used for the source client backup is different than the server that is specified in the `bp.conf` file on the destination.
- 8 Perform the redirected restore.
 - Log onto the NetBackup for Informix destination client as Informix ownerid.
 - Perform a physical restore.
Use the following command to restore storage spaces to their most recent backed-up state:


```
onbar -r -p
```
 - Perform a logical restore.
Use the following command to update the most recent backed-up version of the storage spaces with later transactions:


```
onbar -r -l
```

Example of procedure for restoring an Informix database

This example shows the procedure for restoring an Informix database from the original source computer, `camel`, to the destination computer, `giraffe`. For this example, the redirected restore is necessary because the original computer, `camel`, failed. You also can use a redirected restore to duplicate your Informix database in a development or in a test environment.

This example assumes the following:

- Source client `camel` is a Solaris computer that is running Informix.
 - `SERVERNUM` is 6
 - `DBSERVERNAME` is `srcdb`
 - Host name is `camel`
- Destination client `giraffe` is a Solaris computer that is running Informix.

- SERVERNUM is 0
- DBSERVERNAME is destdb
- Host name is giraffe
- NetBackup master server is lion. The bp.conf on camel includes SERVER=lion. If SERVER=lion were not the first server in the bp.conf file, then the environment variable INFXBSA_SERVER on camel you would set to lion, as follows:

```
export INFXBSA_SERVER=lion
```

- Previously you performed the onbar -b Informix database backup on camel.
- Previously you performed a file system backup of \$INFORMIXDIR/etc on camel, which effectively backed up the following:

- ixbar.6
- sqlhosts
- onconfig
- oncfg_srcdb.6

- You salvaged the logical logs on camel by using the following command:

```
onbar -l -s
```

To redirect an Informix restore (Example)

- 1 As the NetBackup administrator, create the following file on the NetBackup server, lion:

```
/usr/opensv/netbackup/db/altnames/giraffe
```

- 2 Add the name camel to the file.
- 3 Log into giraffe as Informix ownerId and ensure that the Informix database server is shut down.
- 4 Perform a manual file system backup of \$INFORMIXDIR/etc on giraffe.

Including the following files:

- ixbar.0
- sqlhosts
- onconfig
- oncfg_destdb.0

Note that this step is a precautionary measure. It is performed in case these configuration files are needed to recreate the environment on `giraffe`. This backup is not used for the redirected restore.

- 5 On `giraffe`, change the Informix server environment variable to match the variable on `camel`.

Use the following command:

```
export INFORMIXSERVER=srcdb
```

- 6 On `giraffe`, change the `INFXBSA_CLIENT` environment variable to `camel`.

For example:

```
export INFXBSA_CLIENT=camel
```

This causes `giraffe` to browse backups from `camel`.

- 7 (Conditional) On `giraffe`, set the `INFXBSA_SERVER` environment variable to `lion`.

For example:

```
export INFXBSA_SERVER=lion
```

This step is needed only if the first server that is specified in the `bp.conf` file on `giraffe` is not `lion`.

- 8 Browse the file system backups from `camel` and restore to `$INFORMIXDIR/etc` on `giraffe`.

Restore the following files:

- `ixbar.6`
- `sqlhosts`
- `onconfig`
- `oncfg_destdb.6`

- 9 Perform the redirected restore to `giraffe`.

Complete the following steps:

- To perform the physical restore, run the following command:

```
onbar -r -p
```

- Verify the return status by using the following command:

```
echo $?
```

If the restore was successful, the return status is 0.

- To perform the logical restore run the following command

```
onbar -r -l
```

- Verify the return status by using the following command:

```
echo $?
```

If the restore was successful, the return status is 0.

- 10 On the destination client (*giraffe*), start the database.

Troubleshooting

This chapter includes the following topics:

- [Verifying the NetBackup for Informix configuration](#)
- [Verifying NetBackup for Informix log files](#)
- [Enabling the NetBackup for Informix logs](#)
- [About the NetBackup for Informix log files](#)
- [About NetBackup server reports](#)
- [About Informix ON-Bar utility logs](#)
- [Setting the debug level on a NetBackup for SAP UNIX/Linux client](#)
- [Minimizing timeout failures on large database restores](#)
- [Minimizing loading and unloading of tapes for database backups for Windows and UNIX](#)
- [About deleting expired backups from the Informix backup database](#)
- [Delays in completion of backup jobs](#)

Verifying the NetBackup for Informix configuration

Use the following procedure to verify that environment variables, paths, and other settings are correct for your installation.

To verify the configuration

- 1 Verify the existence of `$BAR_BSALIB_PATH`, which is defined in the Informix `$CONFIG` file. This path should point to NetBackup's `/usr/opensv/netbackup/bin/infxbsa.[so,sl,a]` library. Ensure that the permissions are set to `755`.
- 2 Verify that the Informix policy and schedule are properly created.
 See [“About configuring a backup policy for an Informix database”](#) on page 21.
- 3 Set the following variables in the Informix `$INFORMIXDIR/etc/$ONCONFIG` configuration file:
 - `BAR_DEBUG`. This variable sets the level of detail to be gathered about the backup. The range is 0-9, with 9 providing the most detail. The Informix instance uses the value that is specified in this variable, and it provides debugging information according to the level specified.
 - `BAR_DEBUG_LOG`. This variable sets the location of the file to collect the log. This should be the same location `MSGPATH` specifies in the Informix configuration file, `$ONCONFIG`.

To set these variables, stop and restart the Informix instance, as follows:

- For Informix version 7.X and 9.X, run the following Informix commands:

```
onmode -uky
oninit
```

- For Informix version 8.X, run the following commands:

```
xctl onmode -uky
xctl -C oninit
```

- 4 Make sure the table `bar_version` in the `sysutils` database has the correct value for the `bar_version` column. The value should be `1.1.0` for Informix 7.3 or later.
- 5 (Optional) Verify that you are using the correct library.

Perform this step if you use NetBackup for Informix on an IBM AIX platform. Informix 7.3 and later releases require file `infxbsa.so` instead of `infxbsa.a`. You can use the `ar(1)` command to extract `infxbsa.so` from `infxbsa.a` if necessary.

Verifying NetBackup for Informix log files

Use the following procedure to verify that the log files are configured correctly.

To verify the NetBackup for Informix log files

1 Check the Informix instance log specified by `MSGPATH` in the Informix configuration file `$ONCONFIG`.

2 Verify the existence of the following log directories:

```
/usr/opensv/netbackup/logs/user_ops/dbext/logs
/usr/opensv/netbackup/logs/infxbsa
```

The `user_ops` and `infxbsa` directories and any subdirectories should have `777` permissions. They must exist and be accessible for the applications to operate correctly.

3 Examine the client logs in the following order:

- The Informix server log. This path is specified in `ONCONFIG`.
- `OnBAR` debug log. This path is specified in `ONCONFIG`.
- The NetBackup for Informix debug log directory, `/usr/opensv/netbackup/logs/infxbsa`. If this directory was created properly and no log is present, then stop. The absence of a file in a properly created directory indicates a problem with the communication from `ON-Bar` to NetBackup for Informix. This file is the starting point of communication with NetBackup. Its absence indicates there are no further NetBackup activities on either the server or client.

4 Examine other log files.

The following log files reside in the `/usr/opensv/netbackup/logs` directories on the servers indicated:

Master server	<code>bpcd, bpdbm, bprd</code>
Media server	<code>bpbrm, bpcd, bpdm, bptm</code>
Client	<code>/user_ops/dbext/logs, bpcd, bphdb, infxbsa</code>

NetBackup writes a log file to

`/usr/opensv/netbackup/logs/user_ops/dbext/logs` for each backup and restore session. NetBackup writes the other log files on a daily basis. Log files in the log directories have the naming convention of `log.mmddy.` or `mmddy_nnnn.log` (if robust logging is enabled). These files may offer additional debug information.

For example, the `bprd` log file shows if a backup or restore request from `bpbackup` or `bprestore` was received. Examine the request's details such as client name, policy type, client type, and backup file name.

5 Examine the communication progress file.

The communication progress file logs communication between the NetBackup server and the NetBackup client during backups and restores. This file is the key file in the debugging process.

The following is an example of a progress file name:

```
/usr/opensv/netbackup/logs/user_ops/dbext/logs/6749.0.1115233002
```

Perform the following steps to determine the communication progress file's name:

- Use the `cd(1)` command to change to the `/usr/opensv/netbackup/logs/infxbsa` directory.
- Use an editor to open the file in that directory. The following are examples of file names: `log.103105`, `103105.00001.log`.
- Use an editor to open the log file and search for the communication progress file's name.

For example, search for the string `openProgressFile`.

The search flags the following lines in the file:

```
13:56:42.905 [6749] <4> openProgressFile: entering openProgressFile.
13:56:42.905 [6749] <4> openProgressFile: commFull = </usr/opensv/
netbackup/logs/user_ops/dbext/logs/6749.0.1115233002>
```

This output tells you that the communication progress file's name is
 6749.0.1115233002.

Enabling the NetBackup for Informix logs

Enabling the NetBackup for Informix database agent logs manually

- 1 Create the following directories on the client:

```
/usr/opensv/netbackup/logs/bpbackup
/usr/opensv/netbackup/logs/bpbkar

/usr/opensv/netbackup/logs/bphdb

/usr/opensv/netbackup/logs/bprestore

/usr/opensv/netbackup/logs/tar
/usr/opensv/netbackup/logs/infxbasa
chmod 777 /usr/opensv/netbackup/logs/infxbasa
```

For example:

```
cd /usr/opensv/netbackup/logs
mkdir bphdb
```

- 2 The `user_ops`, each of the log directories, and any subdirectories should have 777 permissions. They must exist and be accessible for the applications to operate correctly.

For example:

```
chmod 777 bphdb
```

See [“About permissions for NetBackup for Informix log files \(UNIX\)”](#) on page 38.

- 3 Enable logging for the `nbpem`, `nbjrm`, and `nbrb` scheduling processes that use unified logging.

NetBackup writes unified logs to `/usr/opensv/logs`.

You do not need to create log directories for processes that use unified logging.

Information on how to use logs and reports is available.

See the [NetBackup Troubleshooting Guide](#).

About the NetBackup for Informix log files

The following topics describe the logs that are created when you create the log directories. Use a text editor to view the contents of the logs.

See “[About the bphdb directory on the UNIX database client](#)” on page 57.

About the bphdb directory on the UNIX database client

The `/usr/opensv/netbackup/logs/bphdb` directory contains logs.

The following types of logs exist:

- `onbar_stdout.mmdyy`

Unless it is redirected elsewhere, NetBackup writes ON-Bar script output to this file.

- `onbar_stderr.mmdyy`

Unless it is redirected elsewhere, NetBackup writes ON-Bar script errors to this file.

- `log.mmdyy`

This log contains debugging information for the `bphdb` process. `bphdb` is the NetBackup database backup binary. It is invoked when an automatic backup schedule is run. NetBackup for Informix uses this client process for ON-Bar script execution.

About the infxbsa directory on the UNIX database client

The `/usr/opensv/netbackup/logs/infxbsa` directory contains execution logs.

The following execution log exists:

- `log.mmdyy`

This log contains debugging information and execution status for the NetBackup for Informix client process.

About NetBackup server reports

NetBackup provides other reports that are useful in isolating problems. One such report is All Logs Entries on the server. Information on server reports is available.

See the [NetBackup Administrator's Guide, Volume I](#).

About Informix ON-Bar utility logs

The Informix ON-Bar utility performs its own error logging and tracing in the file specified by `BAR_ACT_LOG` in the `$INFORMIXDIR/etc/ONCONFIG` file. Database administrators can use this log file to determine what happened during ON-Bar execution.

Setting the debug level on a NetBackup for SAP UNIX/Linux client

To control the amount of information that is written to the debug logs, change the “Database” debug level. Typically, the default value of 0 is sufficient. However, Technical Support may ask you to set the value higher to analyze a problem.

The debug logs are located in `/user/openv/netbackup/logs`.

To set the debug level on a UNIX client

- ◆ Enter the following line in the `bp.conf` file.

```
VERBOSE = X
```

Where *X* is the debug level you want.

Minimizing timeout failures on large database restores

Large database restores sometimes fail when multiple restore sessions compete for resources. In this situation, a restore session can be delayed while waiting for media or device access. If the delay is too long, the restore session times out. Use the following procedure to minimize session timeouts and to allow the restores to complete successfully.

To minimize timeout failures on large database restores

- 1 In the NetBackup Administration Console, expand **NetBackup Management > Host Properties > Clients**
- 2 Set the **Client read timeout** property to a large value.

The default for the **Client read timeout** setting is 300 seconds (5 minutes). For database agent clients, increase the value significantly from the recommended value.

See the [NetBackup Administrator's Guide, Volume 1](#).

For example, change this setting to 30-60 minutes to minimize timeout errors.
- 3 Click **OK** for each client.

Note: This change may delay detecting problems during subsequent backups. Consider putting the original value back in place once any restore that requires a change is complete.

Minimizing loading and unloading of tapes for database backups for Windows and UNIX

You can minimize excessive unloading and reloading of tapes between multistreamed database backups by making changes on the NetBackup media server.

To minimize loading and unloading of tapes

- 1 For UNIX, in the `/usr/opensv/netbackup/bp.conf` file on the NetBackup media server, add the following options:
 - `MEDIA_UNMOUNT_DELAY`.
 - `MEDIA_REQUEST_DELAY`. Use this variable only with non-robotic drives, such as tape stackers.
See the NetBackup Administration Guide, Volume 1 for details.
- 2 For Windows, add the options in the Windows registry.
Select **Host Properties > Media Servers** (select media server) > **Media**.

About deleting expired backups from the Informix backup database

The following topics describe how to delete expired backup images.

Informix versions XPS 8.x and IDS 9.x

`onmsmsync` is an Informix version XPS 8.x, IDS 9.x utility that synchronizes the NetBackup catalog with the Informix backup catalog. Use the `onmsmsync` utility to delete images from both Informix backup catalogs and NetBackup catalogs. For information on the `onmsmsync` utility, see your Informix documentation.

Informix version IDS 7.x

Informix version IDS 7.x does not have a mechanism for deleting records of expired backups from its backup database. NetBackup for Informix provides a script that can delete these records from the Informix backup database if the NetBackup image database has expired the backups. Run execute the following command as user `informix` or the Informix Administrator.

```
/usr/opensv/netbackup/ext/db_ext/informix/scripts/infx_remove_expired_images
```

When this script runs, it creates files in the `/tmp` directory. These files are not removed. Later, they can be used to diagnose any problems that occur.

Delays in completion of backup jobs

Sometimes you may see a NetBackup for Informix backup job complete the data transfer but appear to hang before the job completes. The delay may be due to one of the following:

- Network issues
- Storage transfer delays
- NetBackup server post-backup processing

To determine the cause of the delay, refer to the following article:

<http://www.symantec.com/docs/TECH198864>

Index

A

- Application Backup schedule
 - environment variables 36
 - overview 26
- application backup schedule
 - configuring 24
 - overview 24
 - retention 24
- automatic backup
 - create scripts 32
 - manual backup 43
 - policy 43
- automatic backup schedule
 - configuring 25
- Automatic Full Backup schedule 25–26
- Automatic Incremental Backup schedule 26

B

- backup
 - automatic 39
 - manual 39
- backup media required 16
- Backup Selections list
 - adding selections 29–30
 - overview 28
- backups
 - automatic
 - configuring scripts 32
 - automatic using scripts 43
 - expired
 - deleting from Informix 60
 - logical log 42
 - ON-Bar types 42
 - performing database backups 42
 - strategy 42
- BAR_ACT_LOG log file 14
- BAR_BSALIB_PATH variable 19, 53
- BAR_DEBUG variable 53
- BAR_DEBUG_LOG variable 53
- BAR_RETRY parameter 19
- bar_version table 18

- bp.conf
 - administrator 59
 - client 37
 - overview 37
- bphdb
 - process
 - sequence of operation 13
- bphdb log
 - UNIX 57
- bplist command 43
- browsing backups 43

C

- client read timeout property 59
- clients list, for backup policies 28
- commands
 - bplist 43
 - onbar 11, 13, 43–45
 - onmsync 11–12
- communication progress file 55
- compatibility information 16

D

- daemons
 - scheduling processes 56
- debug logs
 - accessing 57
 - in /usr/openv/netbackup/logs 55–56

E

- environment variables 36
- error
 - script name 32

I

- Informix home path 18
- Informix ON-Bar utility
 - overview 11
- INFORMIXDIR/etc directory 30
- infxbsa library 19

installation

- adding a license key 17
- requirements for NetBackup clients 17
- requirements for NetBackup servers 16

instances, adding 19

L

level 0 (full) backup 42

level 1 (incremental) backup 42

level 2 backup 42

license keys 17

log files

- also see debug logs 55
- BAR_ACT_LOG 14

logical log backups 42

logs

OnBAR 54

M

manual backups 43

maximum jobs per client 38

multi-streamed backups 59

multiple copies feature 28

multiplexing

overview 10

N

nbjm scheduling process 56

nbpem scheduling process 56

nbrb scheduling process 56

O

ON-Bar

- also see onbar command 13
- backup types supported 42
- script

overview 13

used in backing up 43

utility

- overview 11, 13
- script 12

onbar command

overview 11, 13

performing backup 43

performing restore 44

physical restore 45

sequence of operation 13

OnBAR debug log 54

ONCONFIG 19, 53–54

onmsync utility 11–12, 60

P

policy configuration

adding clients 28

attributes 23

backup selections list 28

for databases 22

Informix-On-BAR 21

overview 21

schedules 23

Standard 30

testing 39

processes

log files for NetBackup processes 57

scheduling (nbpem

nbjm). See nbrb

R

remote folder button 30

reports

All Log Entries report 57

NetBackup server reports 57

restoring

redirected 45

user directed 44

robust logging 56

S

schedules

adding 23

automatic backup 43

frequency 26

properties 26

types of schedules 23

scripts

cautions regarding usage 32

examples 32

modifying 32

ON-Bar 12

scheduler 43

type of operation 31

sysutils database 18

T

testing policy configuration 39

timeout failures
 minimizing 58

U

unified logging 56