

Veritas Volume Replicator Advisor User's Guide

Windows Server 2008 (x64),
Windows Server 2008 R2 (x64)

6.0

Veritas Volume Replicator Advisor User's Guide

The software described in this book is furnished under a license agreement and may be used only in accordance with the terms of the agreement.

Product version: 6.0

Document version: 6.0.0.0

Legal Notice

Copyright © 2011 Symantec Corporation. All rights reserved.

Symantec, the Symantec Logo, Veritas, Veritas Storage Foundation, CommandCentral, NetBackup, Enterprise Vault, and LiveUpdate are trademarks or registered trademarks of Symantec Corporation or its affiliates in the U.S. and other countries. Other names may be trademarks of their respective owners.

This Symantec product may contain third party software for which Symantec is required to provide attribution to the third party ("Third Party Programs"). Some of the Third Party Programs are available under open source or free software licenses. The License Agreement accompanying the Software does not alter any rights or obligations you may have under those open source or free software licenses. See the Third-party Legal Notices document for this product, which is available online or included in the base release media.

The product described in this document is distributed under licenses restricting its use, copying, distribution, and decompilation/reverse engineering. No part of this document may be reproduced in any form by any means without prior written authorization of Symantec Corporation and its licensors, if any.

THE DOCUMENTATION IS PROVIDED "AS IS" AND ALL EXPRESS OR IMPLIED CONDITIONS, REPRESENTATIONS AND WARRANTIES, INCLUDING ANY IMPLIED WARRANTY OF MERCHANTABILITY, FITNESS FOR A PARTICULAR PURPOSE OR NON-INFRINGEMENT, ARE DISCLAIMED, EXCEPT TO THE EXTENT THAT SUCH DISCLAIMERS ARE HELD TO BE LEGALLY INVALID. SYMANTEC CORPORATION SHALL NOT BE LIABLE FOR INCIDENTAL OR CONSEQUENTIAL DAMAGES IN CONNECTION WITH THE FURNISHING, PERFORMANCE, OR USE OF THIS DOCUMENTATION. THE INFORMATION CONTAINED IN THIS DOCUMENTATION IS SUBJECT TO CHANGE WITHOUT NOTICE.

The Licensed Software and Documentation are deemed to be commercial computer software as defined in FAR 12.212 and subject to restricted rights as defined in FAR Section 52.227-19 "Commercial Computer Software - Restricted Rights" and DFARS 227.7202, "Rights in Commercial Computer Software or Commercial Computer Software Documentation", as applicable, and any successor regulations. Any use, modification, reproduction release, performance, display or disclosure of the Licensed Software and Documentation by the U.S. Government shall be solely in accordance with the terms of this Agreement.

Symantec Corporation
350 Ellis Street
Mountain View, CA 94043

<http://www.symantec.com>

Technical Support

Symantec Technical Support maintains support centers globally. Technical Support's primary role is to respond to specific queries about product features and functionality. The Technical Support group also creates content for our online Knowledge Base. The Technical Support group works collaboratively with the other functional areas within Symantec to answer your questions in a timely fashion. For example, the Technical Support group works with Product Engineering and Symantec Security Response to provide alerting services and virus definition updates.

Symantec's support offerings include the following:

- A range of support options that give you the flexibility to select the right amount of service for any size organization
- Telephone and/or web-based support that provides rapid response and up-to-the-minute information
- Upgrade assurance that delivers automatic software upgrades protection
- Global support purchased on a regional business hours or 24 hours a day, 7 days a week basis
- Premium service offerings that include Account Management Services

For information about Symantec's support offerings, you can visit our web site at the following URL:

www.symantec.com/business/support/index.jsp

All support services will be delivered in accordance with your support agreement

and the then-current enterprise technical support policy.

Contacting Technical Support

Customers with a current support agreement may access Technical Support information at the following URL:

www.symantec.com/business/support/contact_techsupp_static.jsp

Before contacting Technical Support, make sure you have satisfied the system requirements that are listed in your product documentation. Also, you should be at the computer on which the problem occurred, in case it is necessary to replicate the problem.

When you contact Technical Support, please have the following information available:

- Product release level
- Hardware information
- Available memory, disk space, and NIC information
- Operating system
- Version and patch level

- Network topology
- Router, gateway, and IP address information
- Problem description:
 - Error messages and log files
 - Troubleshooting that was performed before contacting Symantec
 - Recent software configuration changes and network changes

Licensing and registration

If your Symantec product requires registration or a license key, access our technical support web page at the following URL:

www.symantec.com/business/support/

Customer service

Customer service information is available at the following URL:

www.symantec.com/business/support/

Customer Service is available to assist with non-technical questions, such as the following types of issues:

- Questions regarding product licensing or serialization
- Product registration updates, such as address or name changes
- General product information (features, language availability, local dealers)
- Latest information about product updates and upgrades
- Information about upgrade assurance and support contracts
- Information about the Symantec Buying Programs
- Advice about Symantec's technical support options
- Nontechnical presales questions
- Issues that are related to CD-ROMs or manuals

Support agreement resources

If you want to contact Symantec regarding an existing support agreement, please contact the support agreement administration team for your region as follows:

Asia-Pacific and Japan	customercare_apac@symantec.com
Europe, Middle-East, and Africa	semea@symantec.com
North America and Latin America	supportsolutions@symantec.com

Documentation

Your feedback on product documentation is important to us. Send suggestions for improvements and reports on errors or omissions. Include the title and document version (located on the second page), and chapter and section titles of the text on which you are reporting. Send feedback to:

doc_feedback@symantec.com

About Symantec Connect

Symantec Connect is the peer-to-peer technical community site for Symantec's enterprise customers. Participants can connect and share information with other product users, including creating forum posts, articles, videos, downloads, blogs and suggesting ideas, as well as interact with Symantec product teams and Technical Support. Content is rated by the community, and members receive reward points for their contributions.

<http://www.symantec.com/connect/storage-management>

Contents

Chapter 1	Introducing Veritas Volume Replicator Advisor (VRAdvisor)	
	Audience	9
	Overview of VRAdvisor	10
	How VRAdvisor works	10
	Data collection	11
	Data analysis	11
	What-if analysis	11
Chapter 2	Installing Volume Replicator Advisor (VRAdvisor)	
	Installing VRAdvisor on Windows	13
	Uninstalling VRAdvisor on Windows	14
Chapter 3	Collecting the sample of data	
	Collecting sample data on Windows	18
	Collecting sample data using the VRAdvisor wizard	18
	Collecting the sample data using the diskStats command	21
Chapter 4	Analyzing the sample of data	
	Analyzing the collected data	24
	Understanding the results of the analysis	28
	Viewing the analysis results	28
	Analysis graph	29
	Analysis results	29
	Recalculating the analysis results	30
	Applying different parameters to the existing sample of data	31
	Performing What-if analysis	31
	Recording and viewing the results	35
Appendix A	Sizing the SRL	
	Overview	37
	Peak usage constraint	38
	Synchronization period constraint	40
	Secondary backup constraint	41
	Secondary downtime constraint	42

Additional factors	42
Example	44

Introducing Veritas Volume Replicator Advisor (VRAdvisor)

Veritas Volume Replicator Advisor (VRAdvisor) is a planning tool that helps you determine an optimum Veritas Volume Replicator (VVR) configuration. This document assumes that you understand the concepts of VVR.

This document provides information on installing and using this tool on different platforms. Wherever applicable, the information that is specific to a platform has been appropriately indicated. For Windows, note that the Veritas Volume Manager (VxVM) has been renamed to Veritas Storage Foundation for Windows (VSW) from Release 4.1 onwards.

For a description of the concepts of VVR, refer to the *Veritas Volume Replicator Administrator's Guide*.

Audience

This guide is intended for system administrators who are responsible for installing, configuring, and setting up replication using VVR. This guide assumes that the user has:

- A basic understanding of system administration.
- Working knowledge of the VVR product.

This document guides you through the process of installing VRAdvisor and then evaluating various parameters using the data collection and data analysis process. This document describes procedures using both the graphical user

interface and the command-line interface, as applicable, on the different platforms.

Overview of VRAdvisor

Planning is the key to successfully configuring VVR. To set up an optimum configuration, you must understand the components of VVR and their interactions with each other. In addition, you must consider the factors that are specific to your environment while planning your VVR configuration. The important factors to consider while planning include:

- Needs and constraints of the business
- Application characteristics
- Mode of replication
- Network characteristics

These factors are dependent on each other and these dependencies must be considered during planning. For example, if your business requires that the data on the Secondary to be as up to date with the Primary as possible, you must choose synchronous mode and provide enough network bandwidth to handle the peak application write rate on the Primary. Or, if the available network bandwidth is less than the peak write rate of the application, you must choose asynchronous mode of replication. Also, the size of the Storage Replicator Log (SRL) must be able to handle the Secondary outages and network outages for the given application characteristics. VRAdvisor considers these dependencies and enables you to determine the parameters to suit your VVR environment.

VRAdvisor does the following:

- Collects a sample of data that reflects the application characteristics.
- Analyzes the sample of the application characteristic and calculates the size of the SRL and the network bandwidth required for replication.
- Enables you to perform a What-if Analysis by varying the needs and constraints of your business, based on your future requirements.

Note that the replication log of VVR is referred to as SRL (Storage Replicator Log) on UNIX and as Replicator Log on Windows. The terms SRL and Replicator Log are used interchangeably in the document.

How VRAdvisor works

Using VRAdvisor for planning involves collecting a sample of data that represents the application write rate and analyzing this sample of data based on

factors, such as the network bandwidth and network outage. VRAdvisor considers the worst case situations when analyzing data, which results in an optimum configuration for VVR. Working with VRAdvisor involves:

- [Data collection](#)
- [Data analysis](#)
- [What-if analysis](#)

Data collection

VRAdvisor uses a sample of data for analysis; the sample of data must be available in an appropriate format required by VRAdvisor. To collect a sample of data that represent the application write rate, we recommend that you collect the sample of data for a period of seven to fourteen days. Make sure that the collection period includes times of peak usage for your application, so that the collected data reflects your environment.

In the data collection mode, VRAdvisor collects the sample of data in the appropriate format required by VRAdvisor. You can also collect the sample of data using the data collection script provided. The data collection script uses the appropriate command at the operating system level to collect the data, and also converts the data to the appropriate format required by VRAdvisor. For more information, see [“Collecting the sample of data”](#) on page 17.

Data analysis

In the data analysis mode, VRAdvisor analyzes the sample of data that you have collected, based on the following factors specified by you:

- Available network bandwidth
- Network outage duration
- Secondary outage duration

After analyzing the data, VRAdvisor displays a graphical as well as textual representation of the results in a separate window. For more information, see [“Analyzing the sample of data”](#) on page 23.

What-if analysis

The What-if analysis feature enables you to perform additional calculations, to plan for future requirements or alternative scenarios. You can vary the parameters and recalculate the results according to different criteria. For example, you can vary the network bandwidth parameter to see what effect it would have on the SRL size. Or, you can specify a potential SRL size and see how

much network bandwidth would be required for that SRL size. For more information, see [“Performing What-if analysis”](#) on page 31.

Installing Volume Replicator Advisor (VRAdvisor)

This chapter explains how to install Veritas Volume Replicator Advisor on the Solaris and Windows operating systems.

VRAdvisor is supported on the following operating systems:

- Windows XP , Windows Vista, Windows 7
- Windows Server 2008, Windows Server 2008 R2

Installing VRAdvisor on Windows

Note: This section gives instructions on installing VRAdvisor on Windows. VRAdvisor is not installed as a part of the common installation process that uses the product installer. To install Veritas Volume Replicator Advisor, follow the procedure in this section. Although VRAdvisor is supported in a non-English locale, the wizards are still displayed in English.

To install VRAdvisor

- 1 If a previous version of VRAdvisor is installed, remove the existing VRAdvisor before installing VRAdvisor.
- 2 Navigate to the `common` directory under the `pkgs` directory in the software package.
- 3 Run the `vrtsvradv.msi` from the `common` directory.

The installation wizard is launched. A message indicates that the `VRAdvisor` setup file is checking for the necessary parameters before starting the installation process.

- 4 In the Welcome page, click **Next**.
- 5 In the Customer Information page, enter your user name and organization, and click **Next**.
- 6 Complete the Destination Folder page as follows:
 - To install `VRAdvisor` in the default directory `c:\Program Files\Veritas\Volume Replicator Advisor`, click **Next**.OR
 - To choose another location for installing `VRAdvisor`, click **Change**.
 - In the Change Current Destination Folder page, in the **Folder name** field, enter the complete path to the directory where you want the `VRAdvisor` package to be installed. You can also use the browse button to navigate to the required directory. Click **OK**.
 - In the Destination Folder page, click **Next**.
- 7 In the Ready to Install the Program page, click **Install** to proceed with the installation.

The Installing Veritas Volume Replicator Advisor page appears. This page displays a progress bar to indicate that the installation is in progress. After the installation completes, a message indicates that the installation was successful.
- 8 Click **Finish**.
- 9 If required, a message prompts you to restart the system. Click **Yes** to reboot the system now. Click **No** to reboot it later.

On Windows XP, a reboot is not required to enable disk performance counters.

Uninstalling VRAdvisor on Windows

- 1 To uninstall VRAdvisor, select **Settings > Control Panel** from the Windows **Start** menu.
- 2 Select **Add or Remove Programs**.
- 3 Select **Veritas Volume Replicator Advisor** from the list of programs.
- 4 Click **Remove**. Windows prompts you to confirm that you want to remove Veritas Volume Replicator Advisor.
- 5 Click **Yes**. The Veritas Volume Replicator Advisor dialog box appears.

The progress bar on the Veritas Volume Replicator Advisor dialog box indicates that the removal is in progress.

After the uninstallation procedure completes, the Add or Remove Programs dialog indicates that the Veritas Volume Replicator Advisor program has been removed successfully.

Collecting the sample of data

You need to collect data write samples that can be used with the VRAdvisor wizard. VRAdvisor uses the sample of data for analysis.

Best practices

- Symantec recommends that you collect the sample data using the volumes that are part of the VVR configuration you are planning to set up.
- To collect a representative sample of data, it is recommended that you collect the sample of data over a period of 7 to 14 days.

Note: The data must be collected for a minimum of seven days.

- Make sure that the collection period includes times of peak usage for your application, so that the collected data reflects your actual requirements.

VRAdvisor calculates an optimum size of the Storage Replicator Log (SRL) and the network for your VVR configuration using a sample of the write statistics.

Depending on the operating system on which you are collecting data, you can either collect the sample of data using the VRAdvisor wizard, commands, or the data collection script. For details, refer to the section for your platform.

- [“Collecting sample data on Windows”](#) on page 18

Collecting sample data on Windows

VRAdvisor can be used to collect and analyze a sample data. You can collect data using the VRAdvisor wizard or the `diskStats` command. To use VRAdvisor to collect data, you must install VRAdvisor on your system. If you do not plan to install VRAdvisor on your system, use the `diskStats` command to collect data.

On Windows, collect the sample data using one of the following methods:

- [Collecting sample data using the VRAdvisor wizard](#)
- [Collecting the sample data using the diskStats command](#)

Prerequisite

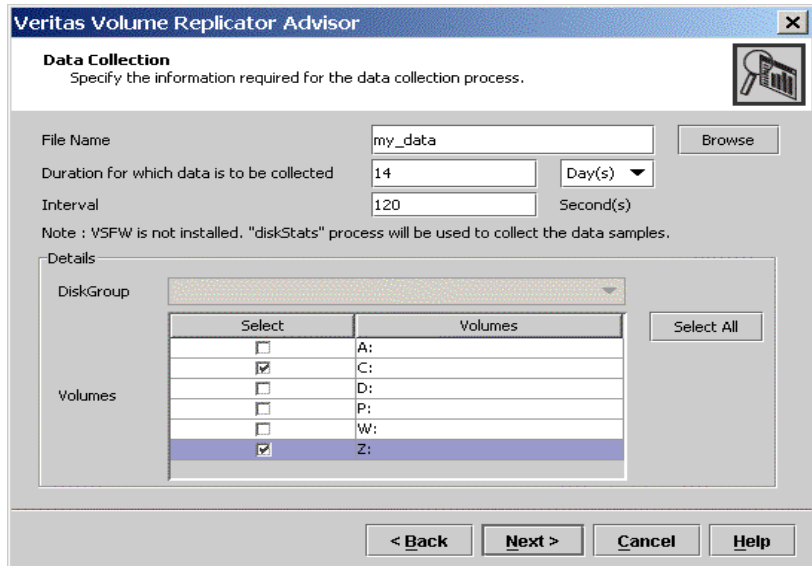
- If you are using VSFV volumes, then ensure that you import the disk group containing the required volumes onto your system.

Collecting sample data using the VRAdvisor wizard

To collect data using the VRAdvisor wizard

- 1 To launch the VRAdvisor wizard on Windows, select **Start > All Programs > Symantec > Volume Replicator Advisor > VRAdvisor Wizard**.
- 2 On the Welcome page, select **Data Collection** and click **Next**.
The Data Collection page appears.

Note: On Windows, only the `diskStats` command is used to collect data.



3 Complete the Data Collection page as follows:

- | | |
|---|--|
| File Name | Enter the name of the file where the data write samples will be collected.

Make sure the name is not being used by another application.

If a file already exists with that filename or if the path is incorrect, a message is displayed. |
| Duration for which data is to be collected | Enter the duration in days or hours. The default value is 14 days. The maximum duration is 30 days. |
| Interval | Enter a value in seconds to indicate the frequency at which you want the data to be collected. The default value is 120 seconds. |

Details

Select the required volumes individually, or click **Select All** to select all of the available volumes in the selected disk group.

Only volumes with drive letters are displayed.

On Windows, the Disk Group field is not available.

- 4 Click **Next**. The Confirmation message appears.
- 5 To start the data collection process immediately, click **Yes**. To go back and make any changes, click **No**.
The Data Collection Summary page indicates that the data collection has started. It also displays a summary of the specifications you entered for the data collection.
- 6 Click **Finish**. VRAdvisor continues to collect data for the specified duration, although the wizard window closes.
The data collection wizard displays an error message if it is unsuccessful in starting the data collection process. Select **Cancel**, fix the reported error and launch the data collection wizard again.

After the data collection completes, the file specified by **File Name** contains the sample of data in a format that can be used for analysis by VRAdvisor. To proceed, see “[Analyzing the sample of data](#)” on page 23.

Collecting the sample data using the diskStats command

On Windows, use the `diskStats` command to collect the data required for analysis. This command can be used to collect data whether or not the Veritas Storage Foundation is installed on the system. The `diskStats` utility is installed in the following location:

```
\Veritas\Volume Replicator Advisor\bin\diskStats.exe
```

To collect data using the diskStats command

- 1 Navigate to the specified path:

```
\Veritas\Volume Replicator Advisor\bin\
```

- 2 At the prompt, enter the following command with exactly the parameters shown:

```
diskStats [-i interval [-c count]] \  
<drive 1> [[drive 2][drive 3]... ]
```

The command will display the output on the console.

Note: The `diskStats` command can accept only drive letters of the volumes as inputs. Volume names are not supported. Volumes created by any application are supported.

To save the output to a file, you can redirect the output to a named file using the command:

```
diskStats [-i interval [-c count]] \  
<drive 1> [[drive 2][drive 3]... ] > <filename>
```

After data collection completes, the file `filename` contains the sample data in `diskStats` format, which can be used for analysis by VRAdvisor. To proceed, see [“Analyzing the sample of data”](#) on page 23.

Analyzing the sample of data

You can use VRAdvisor to analyze the sample data that you have collected. VRAdvisor analyzes the sample data according to parameters that you specify such as available network bandwidth and network outage. In addition, VRAdvisor enables you to perform a What-If analysis by varying the values of the parameters. The output of the analysis gives the network bandwidth required to replicate in synchronous mode, and the SRL (Storage Replicator Log) size required for a given bandwidth and for the given outages to replicate in asynchronous mode. The results of the analysis help you to set up an optimum configuration for VVR. For more information on some of the considerations and formulas used in determining the size of the SRL, see [Appendix A, “Sizing the SRL” on page 37](#).

VRAdvisor enables you to analyze data collected on any of the supported platforms described in [“Collecting the sample of data” on page 17](#). However, to analyze the data, you must install and use VRAdvisor on either Solaris or Windows system.

Prerequisites

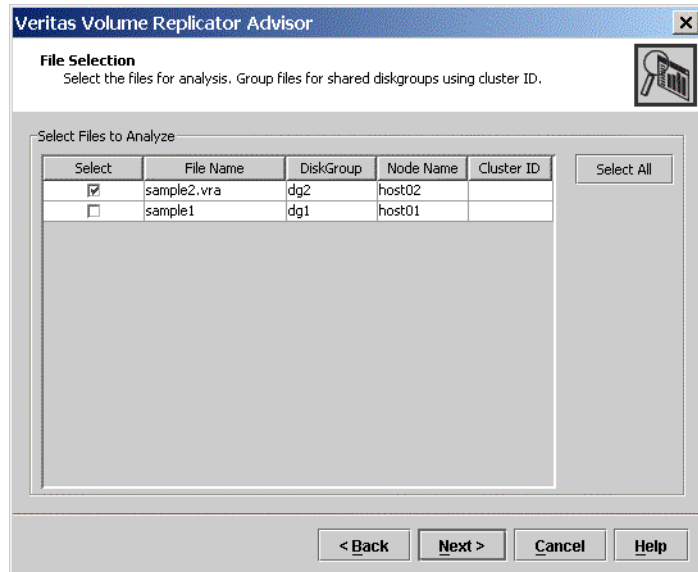
- All the files to be analyzed must be present in a single directory.
- The sample data must be available in a format required by VRAdvisor. VRAdvisor accepts the following formats:
 - `vxstat` output
 - `diskStats` output
 - VRAdv CSV format (used by VRAdvisor wizard or the UNIX data collection script)

Analyzing the collected data

To analyze the collected data using VRAdvisor

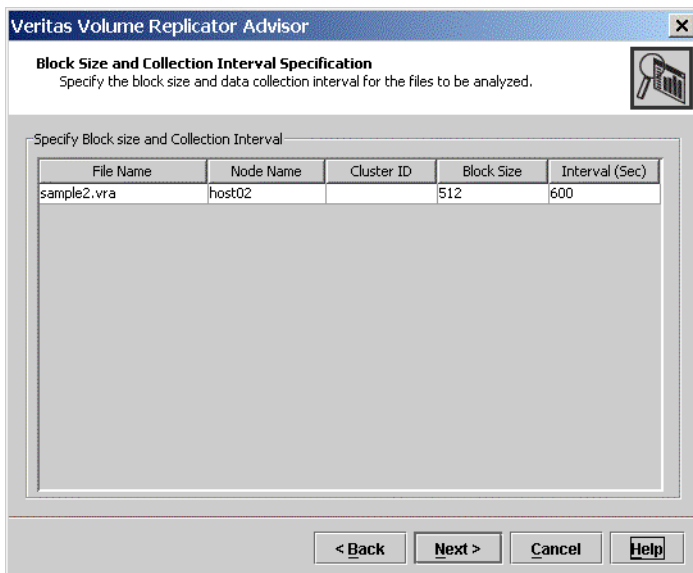
- 3 Launch the VRAdvisor wizard.
For Windows:
Choose **Start > Programs > Veritas > Volume Replicator Advisor > VRAdvisor Wizard**.
- 4 On the Welcome page, select **Analysis**, and then click **Next**.
- 5 On the Directory Specification page, enter the name of the directory containing the data files to be analyzed. All files to be analyzed must be present in the same directory.
The specified directory must contain the data files and any metadata files associated with each data file. The associated metadata and data files must have the same name except for the extension. Metadata files must have the extension `.meta`.
- 6 In the File Selection page, VRAdvisor displays the list of files in a table. Select the files to be analyzed.

Note: Files containing information from nodes that will use the same network bandwidth for replication should be analyzed together. Otherwise, files should not be selected together. In order for the files to be analyzed together, the data collection for each node must start at the same time.



- Enter the DiskGroup name, Node Name and Cluster ID, if necessary.

- 7 In the Block Size and Collection Interval Specification page, specify the metadata as follows:



If the data was collected using the data collection script for UNIX platforms, the generated files contain metadata such as block size, and data collection interval.

If the files do not contain metadata, because the data was collected using operating system commands or the VRAdvisor Wizard, enter the appropriate metadata:

- Specify the block size, if required.
 - If no timestamps are present in the file, or if VRAdvisor is unable to parse the timestamps, specify the interval used during the data collection.
- 8 In the Volume or Disk Selection page, select the tab for each selected file. For each file, the wizard lists the disks or volumes for which data has been collected.

When selecting disks or volumes, make sure you do not select:

- RAID-5 volumes because these are not supported.
- Sub-level volumes (if the volumes are layered volumes). Select only the top-level volumes.
- The volume that you intend to use as the SRL.

- Drives or volumes containing high-activity data that is not be replicated.
Using VRA to analyze data from drives or volumes containing high-activity data that is not be replicated will lead to erroneous results.
Select the volumes or disks to be analyzed, and then Click **Next**.
- 9 The RVG Summary page displays the disks or volumes that were selected for analysis. The disks or volumes for each analyzed file are grouped under an RVG name.
Click **Back** to modify the selections, or click **Next** to continue.
- 10 In the Network Parameters for Analysis page, specify the parameters that apply to all defined RVGs.
 - **Network Bandwidth Available for Replication** indicates the total bandwidth of the network across which you are replicating. Enter the network bandwidth that will be available for replication. Select the unit for the network bandwidth from the drop-down list. The default is 100 Mbps.

Note: Before specifying the network bandwidth you must also consider the loss of available bandwidth because of the TCP-IP/UDP headers, because VRAdvisor does not handle this.

- **Network Outage Duration** indicates the maximum expected outage times applicable for all defined RVGs, for example, the time during which the network link is unavailable for the network that is used by all of the RVGs for replication. Enter the duration of the network outage in days, hours, or minutes. The default is zero.
Click **Next**.
- 11 Complete the RVG Specific Parameters page, as follows:
For each RVG, select the tab and specify the following parameters:
 - **Bandwidth Limit** indicates the bandwidth throttling for that RVG. The default is 0 (zero), which indicates that no bandwidth limit applies.
 - **Secondary Outage Duration** indicates the maximum expected outage times specific to that RVG, for example, the time during which the Secondary host for the RVG is unavailable. Enter the outage duration in days, hours, or minutes. The default is one hour.
 - **Apply to all RVG(s)** indicates that the same bandwidth limit and outage duration apply to all RVGs. Select this check box to enable the All tab and disable the RVG-specific tabs.
Click **Next**.

The Summary of Inputs page displays. The Total Outage Duration column shows the sum of the Network Outage Duration and the Secondary Outage for that RVG.

- 12 In the Summary of Inputs page, click **Back** to modify the parameters, or select **Analyze** to start the analysis.
VRAdvisor displays the results of the analysis for the selected data files.

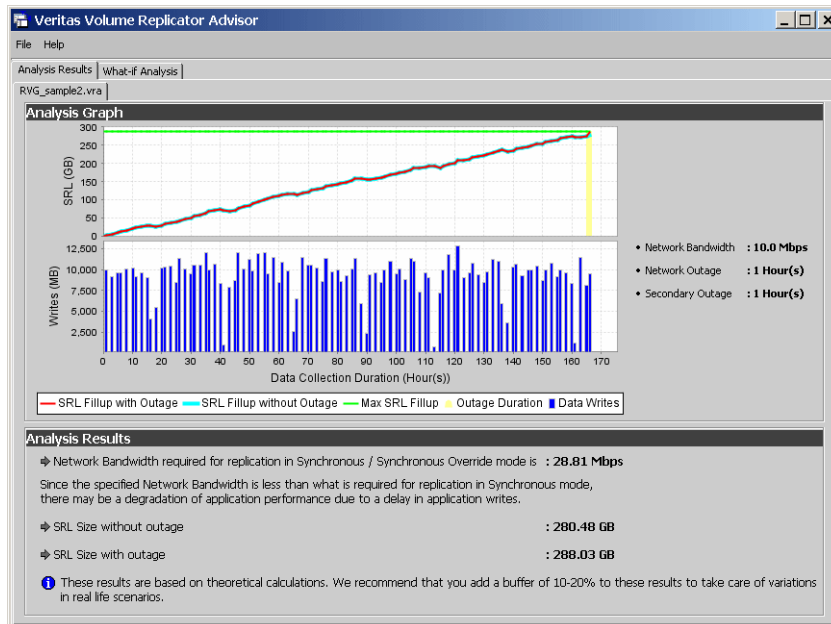
Understanding the results of the analysis

After the analysis completes, VRAdvisor displays the result. You can also change some parameters and recalculate the result. You can perform the following actions:

- [Viewing the analysis results](#)
- [Recalculating the analysis results](#)
- [Recording and viewing the results](#)

Viewing the analysis results

After the analysis completes, the Analysis Results page is displayed by default.



The Analysis Results page displays the result of the analysis for each RVG. Select the tab for an RVG to display the result for that particular RVG. The results page displays the following information:

Analysis graph

The Analysis Graph section shows the following information:

- The top graph shows the SRL (Storage Replicator Log) fillup in megabytes (MB) on the y-axis. The fillup rate is shown both with specified outages and no outages. The x-axis shows the data write duration values. The peak SRL fillup size is shown against a max outage window displayed in yellow, which indicates a worst case scenario.

Note: If SRL fillup value in the graph steadily increases upto maximum during the last data write duration, it indicates that you do not have sufficient network bandwidth for the amount of data writes contained in the sample data.

- The bar graph shows the value of the Application Writes in bytes for the y-axis. The x-axis shows the data write duration values.
- To the right of the graphs, the page displays the values specified for network bandwidth and outage parameters.

Analysis results

The Analysis Results section displays the following information:

- Network bandwidth required for synchronous replication.
If the required bandwidth is more than the bandwidth that you specified, then VRAdvisor displays a message to indicate that the performance of the application writing to the disk writes will be affected.
- The required SRL size with the specified outage.
- The required SRL size with no outage.

Note: Symantec recommends that you add a 10-20 percent buffer to the values calculated by VRAdvisor when setting up the VVR configuration. VRAdvisor analyzes the data based on the specified values, which could be affected by factors that VRAdvisor does not consider, such as TCP/IP headers overhead or network congestion.

Recalculating the analysis results

You can recalculate the analysis results in the following ways:

- [Applying different parameters to the existing sample of data](#)
- [Performing What-if analysis](#)

Applying different parameters to the existing sample of data

You can recalculate the analysis results by changing the values you specified for the network bandwidth and the outage durations.

To recalculate the analysis results

- 1 To change the values you specified, select **File > Change Inputs**.
- 2 On the Network Parameters for Analysis page, specify new values for any of the fields as required. Click **Next** to specify RVG specific parameters or click **Back** to change volume or disk selection.
- 3 Continue using the **Next** and **Back** buttons to navigate through the input pages and change values as required. See “[Analyzing the collected data](#)” on page 24 for information.
- 4 When the values are correct, click **Next** to navigate to the Summary of Inputs page.
- 5 Select **Analyze** to start the analysis.
VRAdvisor performs the analysis of the data using the changed values and displays the results.

Performing What-if analysis

After checking the analysis results, you can use the What-if Analysis page to do additional calculations, to plan for future requirements or alternative scenarios.

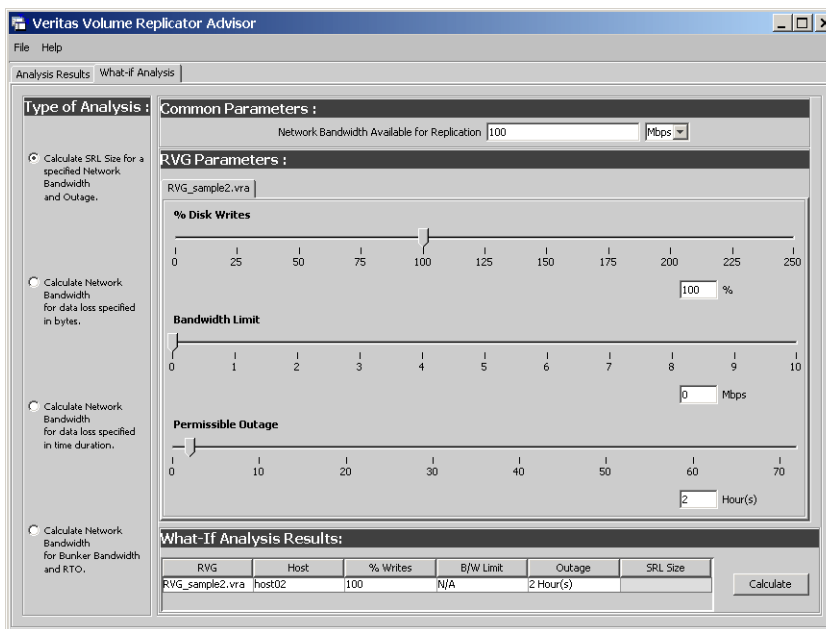
You can vary the parameters and recalculate the results according to different criteria. For example, you can vary the network bandwidth parameter to see what effect it would have on the SRL size or you can specify a potential SRL size and see how much network bandwidth would be required for that SRL size.

Note: Before specifying the network bandwidth, you must also consider the loss of available bandwidth due to the TCP-IP/UDP headers as VRAdvisor cannot manage this.

What-if Analysis also enables you to vary the percentage of disk writes as compared to the sample of data that was analyzed. For example, if you anticipate that your future needs will involve twenty percent more disk writes, set the percentage of disk writes to 120% and recalculate.

To recalculate results using the What-If Analysis

- 1 Select the **What-If Analysis** tab.



- 2 Select the appropriate option on the left side of the What-If Analysis page to recalculate results, as follows:
 - **Calculate SRL Size for a specified Network Bandwidth and Outage**
Use this option to calculate the SRL size for a specified network bandwidth and outage duration.
Available parameters for this option are % Disk Writes and Permissible Outage.
 - **Calculate the Network Bandwidth for data loss specified in bytes**
Use this option to calculate the network bandwidth that would be required to minimize the amount of data loss at the Primary host.
Available parameters for this option are % Disk Writes and Data loss in bytes.
 - **Calculate Network Bandwidth for data loss specified in time duration**
Use this option to calculate the network bandwidth that would be required to minimize the amount of data loss at the Primary host.
Available parameters for this option are % Disk Writes and Data loss in time.

■ **Calculate Network Bandwidth for Bunker and RTO**

In a Bunker replication setup, the available bandwidth determines the RPO (Recovery Point Objective) and the RTO (Recovery Time Objective) that can be achieved after a disaster. Use this option to calculate the bandwidth required for a Primary and Secondary site and between a Bunker and Secondary based on the desired RPO and RTO.

Available parameters for this option are % Disk Writes and RTO. The **Have Bunker** check box indicates that the RVG has a bunker attached.

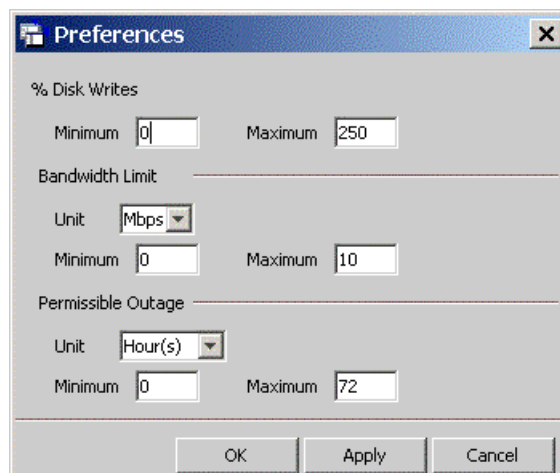
The right side of the page displays the parameters you can specify for each option and the corresponding slider bars.

- 3 In the Common Parameters section, change the bandwidth value shared by all RVGs.
- 4 In the RVG Parameters section, select the tab for the RVG that you want to change, and then use the slider bar to specify the value for each parameter. Each slider has a default range of values, which can be customized using the **Preferences** option that is available from the **File** menu. For more information, see “[Changing the value ranges on the slider bar](#)” on page 33.
- 5 Click **Calculate** at the lower region of the page. The What-if Analysis Results are displayed in this section.

Changing the value ranges on the slider bar

Follow the steps given below to change the value ranges for the slider bars.

- 1 Make sure the option for which you want to change the value ranges is selected on the left side of the What-if Analysis page.
- 2 Use the **File > Preferences** option to display the Preferences page.



Note: The Preferences dialog box displays parameters corresponding to the calculate option that you selected.

- 3 Change the values on the Preferences page as required:
 - Select the Unit for each option from the drop-down box.
 - Specify the appropriate values in the **Maximum** and **Minimum** fields. These values are used to indicate the range of values available on the slider bar.
- 4 Click **Ok**.

Recording and viewing the results

VRAdvisor records values that you specified during the analysis phase and the results of the What-if Analysis to a file, which uses the following naming convention:

`VRAdvResults_Datestamp_and_Timestamp.txt`

For Windows, the file is located at the `Veritas/Volume Replicator Advisor/results` subdirectory.

For Solaris, the file is located at the `/opt/VRTSvradv/results` subdirectory.

Every time you start the Analysis wizard, this file is automatically created and can be referenced later.

Sizing the SRL

The size of the Storage Replicator Log (SRL) is critical to the performance of replication. You can use VRAdvisor to help determine the appropriate SRL size. This section describes some of the considerations in determining the size of the SRL. VRAdvisor uses formulas described in this section to determine the appropriate SRL size.

Note: The terms Replicator Log and Storage Replicator Log (SRL) mean the same.

Overview

When the SRL overflows for a particular Secondary, the RLINK corresponding to that Secondary is marked `STALE` and becomes out of date until a complete resynchronization with the Primary is performed. Because resynchronization is a time-consuming process and during this time the data on the Secondary cannot be used, it is important to avoid SRL overflows. The SRL size needs to be large enough to satisfy four constraints:

- It must not overflow for asynchronous RLINKs during periods of peak usage when replication over the RLINK may fall far behind the application.
- It must not overflow while a Secondary RVG is being synchronized.
- It must not overflow while a Secondary RVG is being restored.
- It must not overflow during extended outages (network or Secondary node).

Note: The size of a SRL must be at least 110 MB. If size specified for SRL is less than 110 MB, VVR displays an error message that prompts to specify a value that is equal to or greater than 110 MB.

To determine a size of the SRL, you must determine a size required to satisfy each of these constraints individually. Choose a value at least equal to the maximum so that all constraints are satisfied. The information needed to perform this analysis includes:

- The maximum expected downtime for Secondary nodes
- The maximum expected downtime for a network connection
- The method for synchronizing Secondary data volumes with data from Primary data volumes. If the application is shut down to perform the synchronization, the SRL is not used and the method is not important. Otherwise, this information could include the time required to copy data over the network or the time required to copy it to a tape or disk, to send the copy to the Secondary site, and to load the data onto the Secondary data volumes.

Note: If Automatic Synchronization option is used to synchronize the Secondary, the above-mentioned step is not a concern.

To perform Secondary backups in order to avoid complete resynchronization in case of Secondary data volume failure, the following information is required:

- The frequency of Secondary backups
- The maximum expected delay to detect and repair a failed Secondary data volume
- The expected time to reload backups onto the repaired Secondary data volume

Peak usage constraint

For some configurations, it might be common for replication to fall behind the application during certain period and catch up during others. For example, an RLINK might fall behind during business hours and catch up overnight if its peak bandwidth requirements exceed the network bandwidth. However, for synchronous RLINKs this does not apply as a shortfall in network capacity would cause each application write to be delayed. This in turn causes the application to run more slowly.

For asynchronous RLINKs, the only limit to how far replication can fall behind is the size of the SRL. If it is known that the peak write rate requirements of the application exceed the available network bandwidth, then it becomes important to consider this factor when sizing the SRL.

Assuming that data is available providing the typical application write rate over a series of intervals of equal length, it is simple to calculate the SRL size needed to support this usage pattern:

- 1 Calculate the network capacity over the given interval (BW_N).
- 2 For each interval n , calculate SRL log volume usage (LU_n), as the excess of application write rate (BW_{AP}) over network bandwidth ($LU_n = BW_{AP(n)} - BW_N$).
- 3 For each interval, accumulate all the SRL usage values to find the cumulative SRL log size (LS):

$$LS_n = \sum_{i=1 \dots n} LU_i$$

The largest value obtained for any LS_n is the value that should be used for SRL size as determined by the peak usage constraint. See the table “[Example calculation of SRL size required to support peak usage period](#)” on page 39, which shows an example of this calculation. The third column, Application, contains the maximum likely application write rate per hour. The fourth column Network shows the network bandwidth. The fifth column SRL Usage shows the difference between application write rate and network bandwidth obtained for each interval. The sixth column Cumulative SRL Size shows the cumulative difference every hour. The largest value in column 6 is 37 gigabytes. The SRL should be at least this large for this application.

Several factors can reduce the maximum size to which the SRL can fill up during the peak usage period. The factors that need to be considered are:

- The `latencyprot` characteristic can be enabled to restrict the amount by which the RLINK can fall behind, slowing down the write rate.
- The network bandwidth can be increased to handle the full application write rate. In this example, the bandwidth should be 15 gigabytes/hour—the maximum value in column three.

Table A-1 Example calculation of SRL size required to support peak usage period

Hour Starting	Hour Ending	Application (GB/hour)	Network (GB/hour)	SRL Usage (GB)	Cumulative SRL Size (GB)
7am	8 a.m.	6	5	1	1
8	9	10	5	5	6
9	10	15	5	10	16
10	11	15	5	10	26

Table A-1 Example calculation of SRL size required to support peak usage period(Continued)

Hour Starting	Hour Ending	Application (GB/hour)	Network (GB/hour)	SRL Usage (GB)	Cumulative SRL Size (GB)
11	12 p.m.	10	5	5	31
12 p.m.	1	2	5	-3	28
1	2	6	5	1	29
2	3	8	5	3	32
3	4	8	5	3	35
4	5	7	5	2	37
5	6	3	5	-2	35

Synchronization period constraint

When a new Secondary is added to an RDS, its data volumes must be synchronized with those of the Primary unless the Primary and the Secondary data volumes have been zero initialized and the application has not yet been started. You also need to synchronize the Secondary after a Secondary data volume failure, in case of SRL overflow or after replication is stopped.

This section applies if you choose *not* to use the automatic synchronization method to synchronize the Secondary. Also, this constraint does not apply if you choose to use a method other than automatic synchronization and if the application on the Primary can be shut down while the data is copied to the Secondary. However, in most cases, it might be necessary to synchronize the Secondary data volumes with the Primary data volumes while the application is still running on the Primary. This is performed using one of the methods described in the *Veritas Volume Replicator Administrator's Guide*.

If SRL overflows during the synchronization period when the application is running and data is getting accumulated in the SRL, then the synchronization process must be restarted. To ensure that the SRL does not overflow during such periods, it is necessary to appropriately size the SRL so that it can hold as much data as the application writes. After replication is started, this data is replicated and the Secondary eventually catches up with the Primary.

Depending on your needs, it may or may not be possible to schedule synchronization during periods of low application write activity. If it is possible to complete the synchronization process during a period of low application write activity, then you must ensure that the SRL is sized such that it can hold

all the incoming writes during this period. Otherwise, the SRL may overflow. Using VRAdvisor enables you to arrive at an optimum SRL size.

Secondary backup constraint

VVR provides a mechanism to perform periodic backups of the Secondary data volumes. In case of a problem that would otherwise require a complete resynchronization using one of the methods described in “[Synchronization period constraint](#)” on page 40, a Secondary backup, if available, can be used to bring the Secondary online much more quickly.

A Secondary backup is made by defining a Secondary checkpoint and then making a raw copy of all the Secondary data volumes. If a failure occurs, then the Secondary data volumes are restored from this local copy and replication proceeds from the checkpoint. Data is replayed from the checkpoint to the present.

The constraint introduced by this process is that the Primary SRL must be large enough to hold all the data logged in the Primary SRL after the creation of the checkpoint corresponding to the most recent backup. This depends largely on three factors:

- The application write rate.
- The frequency of Secondary backups.
- Minimum SRL size.

You need to consider an application’s write rate and frequency of Secondary backups in order calculate the minimum SRL size. Realistically, an extra margin should be added to an estimate arrived at using these figures to cover other possible delays including:

- Maximum delay before a data volume failure is detected by a system administrator.
- Maximum delay to repair or replace the failed drive.
- Delay to reload disk with data from the backup tape.

To arrive at an estimate of the SRL size needed to support this constraint, first determine the total time period the SRL needs to support by adding the period planned between Secondary backups to the time expected for the three factors mentioned above. Then use the application write rate data to determine for the worst case scenario the amount of data the application could generate over this time period.

Note: Even if only one volume fails, all other volumes need to be restored.

Secondary downtime constraint

When the network connection to a Secondary node or the Secondary node itself, goes down, the RLINK on the Primary node detects the broken connection and responds. If the RLINK has its `synchronous` attribute set to `fail`, the response is to fail all subsequent write requests until the connection is restored. In this case, the SRL does not grow and hence, the downtime constraint is irrelevant. For all other types of RLINKs, incoming write requests accumulate in the SRL until the connection is restored. Thus, the SRL must be large enough to hold the maximum output that the application could be expected to generate over the maximum possible downtime.

Maximum downtimes may be difficult to estimate. In some cases, the vendor may guarantee that failed hardware or network connections would be repaired within a stipulated period. However, if the repair is not completed within the guaranteed period, then SRL may overflow. Hence, it is recommended that a safety margin should always be added to any such arrived estimate.

To arrive at an estimate of the SRL size needed to support this constraint, first obtain estimates for the maximum downtimes which the Secondary node and network connections could reasonably be expected to incur. Then, use the application write rate data to determine, for the worst case scenario, the amount of data the application could generate over this time period. With the introduction of the `autodcm` mode of SRL overflow protection, sizing the SRL for downtime is not essential to prevent SRL overflow because the changed blocks are no longer stored in the SRL. However, note that the Secondary is inconsistent during the replay of the DCM, and hence it is still important for the SRL to be large enough to cover most eventualities.

Additional factors

Once estimates of required SRL size have been obtained under each of the constraints described above, several additional factors must be considered.

For the synchronization period, downtime and Secondary backup constraints, it is likely that any of these situations could be immediately followed by a period of peak usage. In this case, the Secondary could continue to fall further behind rather than catching up during the peak usage period. As a result, it might be necessary to add the size obtained from the peak usage constraint to the maximum size obtained using the other constraints. Note that this applies even for synchronous RLINKs, which are not normally affected by the peak usage constraint as after a disconnect they act as asynchronous RLINKs until caught up.

It is also possible that other situations could occur requiring additions to constraints. For example, a synchronization period could be immediately followed by a long network failure or a network failure could be followed by a

Secondary node failure. Whether and to what degree to plan for unlikely occurrences requires weighing the cost of additional storage against the cost of additional downtime caused by SRL overflow.

Once an estimate has been computed, one more adjustment must be made to account for the fact that all data written to the SRL also includes some header information. This adjustment must take into account the typical size of write requests. Each request uses at least one additional disk block for header information.

For AIX, Linux, and Solaris, the adjustments are as follows:

If Average Write Size is:	Add This Percentage to SRL Size:
512 bytes	100%
1K	50%
2K	25%
4K	15%
8K	7%
10K	5%
16K	4%
32K or more	2%

For HP-UX, the adjustments are as follows:

If Average Write Size is:	Add This Percentage to SRL Size:
1K	100%
2K	50%
4K	25%
8K	13%
10K	10%
16K	6%
32K or more	3%

Example

This section shows how to calculate the SRL size for a VVR configuration. First, collect the relevant parameters for the site as follows:

Application peak write rate	1 gigabyte/hour
Duration of peak	8 am - 8 pm
Application off-peak write rate	250 megabytes/hour
Average write size	2 kilobytes
Number of Secondary sites	1
Type of RLINK	synchronous=override
Synchronization Period:	
application shutdown	no
copy data to tape	3 hours
send tapes to Secondary site	4 hours
load data	3 hours
Total	10 hours
Maximum downtime for Secondary node	4 hours
Maximum downtime for network	24 hours
Secondary backup	not used

Because synchronous RLINKs are to be used, the network bandwidth must be sized to handle the peak application write rate to prevent the write latency from growing. Thus, the peak usage constraint is not an issue and the maximum constraint is that the network could be out for 24 hours. The amount of data accumulating in the SRL over this period would be:

(Application peak write rate x Duration of peak) +
(Application off-peak write rate x Duration of off peak).

In this case, the calculation would appear as follows:

$$1 \text{ GB/hour} \times 12 \text{ hours} + 1/4 \text{ GB/hour} \times 12 = 15 \text{ GB}$$

An adjustment of 25% is made to handle header information. Since the 24-hour downtime is already an extreme case, no additional adjustments are needed to handle other constraints. The result shows that the SRL should be at least 18.75 gigabytes.

Index

A

- Add or Remove Programs option 14
- analysis results
 - recalculating 30
 - saving 35
 - viewing from file 35
- analyzing data
 - overview 23
 - performing what-if analysis 31
- application writes, displaying 29

B

- backup constraints, Secondary 41
- backup interval, see Secondary outage 32
- bandwidth, required for synchronous replication 29

C

- collecting data
 - on Windows 18
- constraints
 - peak usage 38
 - Secondary backup 41
 - Secondary downtime 42
 - synchronization period 40

D

- data analysis results
 - recalculating 30
 - saving 35
 - viewing from file 35
 - viewing in VRAdvisor 29
- data analyzing
 - overview 23
 - performing what-if analysis 31
- data collection
 - on Windows 18
- data loss, calculating bandwidth based on 32
- diskStats command, collecting data 21

- downtime constraint, Secondary 42

F

- files
 - analysis results 35

G

- graphs, displaying analysis results 29

I

- installation wizard 14
- installing VRAdvisor
 - on Windows 13

L

- layered volumes, collecting data on 26

M

- maximum outage window 29
- minimum time for collecting data 17

N

- network bandwidth
 - choosing 38
- network bandwidth, required for synchronous replication 29

O

- operating systems, supported 13
- outage window, maximum 29
- outage, calculating SRL size from 32

P

- peak usage constraint 38
- period of synchronization 40
- permissible outage, calculating SRL size from 32

platforms, supported 13
preferences, modifying 33

installing VRAdvisor 13
uninstalling VRAdvisor 14

R

RAID-5 volumes not supported 26
recalculating analysis results 30
removing VRAdvisor
 on Windows 14
required bandwidth, synchronous replication 29
required SRL size 29
results file, location 35
results graphs, described 29

S

saving analysis results 35
Secondary backup constraints 41
Secondary backup interval
 see Secondary outage 32
Secondary downtime constraint 42
slider bar, customizing values 33
SRL fillup 29
SRL size
 calculating 32
 results of analysis 29
supported operating systems 13
synchronization period constraint 40
synchronous replication, required bandwidth 29

U

uninstalling VRAdvisor
 on Windows 14
usage constraint, peak 38

V

value ranges, for slider bar 33
VRAdvisor Wizard, collecting data
 on Windows 18

W

what-if analysis
 changing the value ranges 33
 overview 31
 performing 32
 recording and viewing the results 35
Windows
 collecting data 18