

Veritas™ Cluster Server Agent for Sybase Installation and Configuration Guide

Solaris

5.1 Service Pack 1



Veritas Cluster Server Agent for Sybase Installation and Configuration Guide

The software described in this book is furnished under a license agreement and may be used only in accordance with the terms of the agreement.

Product version: VCS 5.1SP1

Document version: 5.1SP1.0

Legal Notice

Copyright © 2010 Symantec Corporation. All rights reserved.

Symantec, the Symantec logo, Veritas, Veritas Storage Foundation, CommandCentral, NetBackup, Enterprise Vault, and LiveUpdate are trademarks or registered trademarks of Symantec corporation or its affiliates in the U.S. and other countries. Other names may be trademarks of their respective owners.

The product described in this document is distributed under licenses restricting its use, copying, distribution, and decompilation/reverse engineering. No part of this document may be reproduced in any form by any means without prior written authorization of Symantec Corporation and its licensors, if any.

THE DOCUMENTATION IS PROVIDED "AS IS" AND ALL EXPRESS OR IMPLIED CONDITIONS, REPRESENTATIONS AND WARRANTIES, INCLUDING ANY IMPLIED WARRANTY OF MERCHANTABILITY, FITNESS FOR A PARTICULAR PURPOSE OR NON-INFRINGEMENT, ARE DISCLAIMED, EXCEPT TO THE EXTENT THAT SUCH DISCLAIMERS ARE HELD TO BE LEGALLY INVALID. SYMANTEC CORPORATION SHALL NOT BE LIABLE FOR INCIDENTAL OR CONSEQUENTIAL DAMAGES IN CONNECTION WITH THE FURNISHING, PERFORMANCE, OR USE OF THIS DOCUMENTATION. THE INFORMATION CONTAINED IN THIS DOCUMENTATION IS SUBJECT TO CHANGE WITHOUT NOTICE.

The Licensed Software and Documentation are deemed to be commercial computer software as defined in FAR 12.212 and subject to restricted rights as defined in FAR Section 52.227-19 "Commercial Computer Software - Restricted Rights" and DFARS 227.7202, "Rights in Commercial Computer Software or Commercial Computer Software Documentation", as applicable, and any successor regulations. Any use, modification, reproduction release, performance, display or disclosure of the Licensed Software and Documentation by the U.S. Government shall be solely in accordance with the terms of this Agreement.

Symantec Corporation
350 Ellis Street
Mountain View, CA 94043
<http://www.symantec.com>

Technical Support

Symantec Technical Support maintains support centers globally. Technical Support's primary role is to respond to specific queries about product features and functionality. The Technical Support group also creates content for our online Knowledge Base. The Technical Support group works collaboratively with the other functional areas within Symantec to answer your questions in a timely fashion. For example, the Technical Support group works with Product Engineering and Symantec Security Response to provide alerting services and virus definition updates.

Symantec's support offerings include the following:

- A range of support options that give you the flexibility to select the right amount of service for any size organization
- Telephone and/or Web-based support that provides rapid response and up-to-the-minute information
- Upgrade assurance that delivers software upgrades
- Global support purchased on a regional business hours or 24 hours a day, 7 days a week basis
- Premium service offerings that include Account Management Services

For information about Symantec's support offerings, you can visit our Web site at the following URL:

www.symantec.com/business/support/index.jsp

All support services will be delivered in accordance with your support agreement and the then-current enterprise technical support policy.

Contacting Technical Support

Customers with a current support agreement may access Technical Support information at the following URL:

www.symantec.com/business/support/contact_techsupp_static.jsp

Before contacting Technical Support, make sure you have satisfied the system requirements that are listed in your product documentation. Also, you should be at the computer on which the problem occurred, in case it is necessary to replicate the problem.

When you contact Technical Support, please have the following information available:

- Product release level

- Hardware information
- Available memory, disk space, and NIC information
- Operating system
- Version and patch level
- Network topology
- Router, gateway, and IP address information
- Problem description:
 - Error messages and log files
 - Troubleshooting that was performed before contacting Symantec
 - Recent software configuration changes and network changes

Licensing and registration

If your Symantec product requires registration or a license key, access our technical support Web page at the following URL:

www.symantec.com/business/support/

Customer service

Customer service information is available at the following URL:

www.symantec.com/business/support/

Customer Service is available to assist with non-technical questions, such as the following types of issues:

- Questions regarding product licensing or serialization
- Product registration updates, such as address or name changes
- General product information (features, language availability, local dealers)
- Latest information about product updates and upgrades
- Information about upgrade assurance and support contracts
- Information about the Symantec Buying Programs
- Advice about Symantec's technical support options
- Nontechnical presales questions
- Issues that are related to CD-ROMs or manuals

Support agreement resources

If you want to contact Symantec regarding an existing support agreement, please contact the support agreement administration team for your region as follows:

Asia-Pacific and Japan	customercare_apac@symantec.com
Europe, Middle-East, and Africa	semea@symantec.com
North America and Latin America	supportsolutions@symantec.com

Documentation

Product guides are available on the media in PDF format. Make sure that you are using the current version of the documentation. The document version appears on page 2 of each guide. The latest product documentation is available on the Symantec Web site.

<https://sort.symantec.com/documents>

Your feedback on product documentation is important to us. Send suggestions for improvements and reports on errors or omissions. Include the title and document version (located on the second page), and chapter and section titles of the text on which you are reporting. Send feedback to:

docs@symantec.com

About Symantec Connect

Symantec Connect is the peer-to-peer technical community site for Symantec's enterprise customers. Participants can connect and share information with other product users, including creating forum posts, articles, videos, downloads, blogs and suggesting ideas, as well as interact with Symantec product teams and Technical Support. Content is rated by the community, and members receive reward points for their contributions.

<http://www.symantec.com/connect/storage-management>

Contents

Technical Support	4	
Chapter 1	Introducing the Veritas Cluster Server for Sybase	11
	About the Veritas Cluster Server for Sybase	11
	What's new in this release	12
	Supported software for the VCS agent for Sybase	12
	How the agent makes Sybase highly available	12
	About the Sybase agent functions	13
	Sybase agent functions	13
	Sybase Bk agent functions	14
	Using the IPC Cleanup feature for the Sybase agent	15
	Monitoring options for the Sybase agent	16
	Monitoring Sybase instances running in Solaris 10 zones	17
	Action function for the VCS agent for Sybase	17
	Typical Sybase configuration in a VCS cluster	17
Chapter 2	Installing and configuring Sybase	19
	VCS requirements for installing Sybase	19
	Sybase installation directory	19
	\$SYBASE directory on shared disks	20
	System Group and User for Sybase home directory	20
	Database dbspaces	20
	Transparent TCP/IP failover	20
	Long pathname limitation for \$SYBASE	20
	Language settings for the Sybase agent	22
	Installing Sybase in a VCS environment	22
	Configuring Sybase for detail monitoring	22
Chapter 3	Installing, upgrading, and removing the agent for Sybase	25
	Before you install or upgrade the agent for Sybase	25
	Installing the agent for Sybase	26
	Disabling the agent for Sybase	28

	Removing the agent for Sybase	29
	Upgrading the agent for Sybase	30
Chapter 4	Configuring VCS service groups for Sybase	33
	About configuring service groups for Sybase	33
	Before configuring the service group for Sybase	33
	Importing the SybaseTypes.cf file	34
	Configuring the service groups for Sybase	35
	Configuring the service group for Sybase from Cluster Manager (Java console)	36
	Configuring the service group for Sybase using the command line	38
	Encrypting passwords for Sybase	39
	About setting up detail monitoring for the agent for Sybase	40
	Disabling detail monitoring for the agent for Sybase	40
	Enabling detail monitoring for the agent for Sybase	41
Chapter 5	Administering VCS service groups for Sybase	43
	About administering service groups for Sybase	43
	Bringing the Sybase service group online	43
	Taking the Sybase service group offline	44
	Switching the Sybase service group	44
	Modifying the Sybase service group configuration	44
	Viewing the agent log for Sybase	45
Appendix A	Resource type definitions for Sybase	47
	About the resource type and attribute definitions for Sybase	47
	Sybase resource type	47
	Type definition for the Sybase agent	48
	Attribute definitions for the Sybase agent	48
	SybaseBk resource type	53
	Type definition for the SybaseBk agent	53
	Attribute definitions for the SybaseBk agent	53
Appendix B	Sample configurations for Sybase	57
	About the sample configuration for the Sybase agent	57
	Resource dependency graph for the Sybase agent	57
	Resource dependency for Sybase configured in Solaris zones	58
	Sample configuration for agent for Sybase on Solaris systems	60
	Sample configuration for the Sybase agent in Solaris zones	62

Appendix C	Changes introduced in previous releases	63
	Changes introduced in the previous release	63
Index		65

Introducing the Veritas Cluster Server for Sybase

This chapter includes the following topics:

- [About the Veritas Cluster Server for Sybase](#)
- [What's new in this release](#)
- [Supported software for the VCS agent for Sybase](#)
- [How the agent makes Sybase highly available](#)
- [About the Sybase agent functions](#)
- [Monitoring options for the Sybase agent](#)
- [Action function for the VCS agent for Sybase](#)
- [Typical Sybase configuration in a VCS cluster](#)

About the Veritas Cluster Server for Sybase

The Veritas Cluster Server for Sybase brings the configured Sybase servers online, monitors them, and takes them offline.

The following agents work together to make Sybase highly available in a VCS cluster.

- Agent for SQL Server- Sybase
- Agent for Backup Server- SybaseBk

The agents include type declarations and agent executables, and are represented with Sybase and SybaseBk resource types, respectively.

Note: Veritas agent for Sybase provides "active/passive" support for Sybase. For "active/active" support, contact Sybase for their agent.

What's new in this release

The Veritas Cluster Server agent for Sybase includes the following new or enhanced features:

- The agent supports a new optional attribute `Run_ServerFile`. The attribute specifies the location of the `RUN_SERVER` file for a Sybase instance. If this attribute is not specified, the default location of this file is accessed while starting Sybase server instances.

Supported software for the VCS agent for Sybase

The Veritas agent for Sybase supports the following software versions:

Sybase Sybase Adaptive Server Enterprise (ASE) 12.5.x and 15.x

Veritas Cluster Server VCS 5.1 SP1 on Solaris

Solaris SPARC: Solaris 9 and 10 (32-bit and 64-bit)
x64: Solaris 10 (64-bit)

For Solaris, Symantec recommends applying the latest Solaris operating system patches available from Sun. Visit the Oracle Web site for more information.

Refer to the *Veritas Cluster Server Release Notes* for more details.

How the agent makes Sybase highly available

The agent for Sybase can perform different levels of monitoring and different actions which you can configure. In the basic monitoring mode, the agent detects an application failure if a configured Sybase server process is not running. In the optional detail monitoring mode, the agent detects application failure if it cannot perform a transaction in the test table in the Sybase database server.

When the agent detects that the configured Sybase server is not running on a system, the Sybase service group is failed over to the next available system in the service group's `SystemList`. The configured Sybase servers are started on the new system, thus ensuring high availability for the Sybase server and data.

About the Sybase agent functions

The functions an agent performs are called entry points. The Veritas agent for Sybase can perform different operations or functions on the database. These functions are online, offline, monitor, clean, and action.

Review the functions for the following agents that are part of the Veritas Cluster Server agent suite for Sybase:

- Sybase (SQL server) agent functions
 See “[Sybase agent functions](#)” on page 13.
- Sybase Bk (Backup Server) agent functions
 See “[Sybase Bk agent functions](#)” on page 14.

Sybase agent functions

The agent for Sybase starts a Sybase SQL server, monitors the server processes, and shuts down the server.

[Table 1-1](#) lists the Sybase agent for SQL server functions.

Table 1-1 Sybase agent for SQL server functions

Agent function	Description
Online	<p>Starts the Sybase SQL server by using the following command.</p> <pre>startserver -f \$SYBASE/\$SYBASE_ASE/install/RUN_\$Server</pre> <p>Where \$SYBASE/\$SYBASE_ASE/install/RUN_\$Server is the default location of the Run server file. If you specify the value of the Run_ServerFile attribute, then the value that you specify is used instead of the default location.</p> <p>If the WaitForRecovery attribute is enabled, the agent waits either till recovery has been completed and all databases that can be made online are brought online, or till the OnlineTimeout value is reached. The agent uses the AEPTIMEOUT attribute to get the time out value for the entry point.</p> <p>By default, the WaitForRecovery attribute is not enabled.</p>
Monitor	<p>In the basic monitoring mode, the agent scans process table for the dataserver process. In detail monitoring mode, the agent runs the script that is specified in Monscrip as an option.</p> <p>See “Monitoring options for the Sybase agent” on page 16.</p>

Table 1-1 Sybase agent for SQL server functions (*continued*)

Agent function	Description
Offline	<p>Stops the Sybase SQL server by using the <code>isql</code> command in the following manner.</p> <p>The agent first executes the <code>shutdown with wait</code> command.</p> <p>The agent waits in a loop till the <code>dataserver</code> completely stops. The agent waits for up to the <code>OfflineTimeout</code> duration. If the <code>dataserver</code> remains up, the offline script executes the <code>shutdown with nowait</code> command.</p>
Clean	<p>Forcefully stops the Sybase SQL server by using the <code>isql</code> command in the following manner.</p> <p>The agent first executes the <code>shutdown with wait</code> command. If this command fails, the clean script executes the <code>shutdown with nowait</code> command.</p> <p>If the process does not respond to the <code>shutdown</code> command, the agent scans the process table for the processes that are associated with the configured database and kills them.</p>
Action	<p>Performs the predefined actions on a resource.</p> <p>See “Action function for the VCS agent for Sybase” on page 17.</p>

Sybase Bk agent functions

The agent for SybaseBk starts a Sybase Backup server, monitors the server process, and shuts down the server.

[Table 1-2](#) lists the Sybase agent for Backup server functions.

Table 1-2 Sybase agent for Backup server functions

Agent operation	Description
Online	<p>Starts the Sybase Backup server by using the following command.</p> <pre>startserver -f \$SYBASE/\$SYBASE_ASE/ install/RUN_ \$BackupServer</pre> <p>Where <code>\$SYBASE/\$SYBASE_ASE/install/RUN_ \$BackupServer</code> is the default location of the Run server file. If you specify the value of the <code>Run_ServerFile</code> attribute, then the value that you specify is used instead of the default location.</p>
Monitor	<p>Scans the process table for the backupserver process.</p>

Table 1-2 Sybase agent for Backup server functions (*continued*)

Agent operation	Description
Offline	<p>Stops the Sybase Backup server by using the <code>isql</code> command in the following manner.</p> <p>The agent first executes the command <code>shutdown SYB_BACKUP with wait</code>. If this command fails, the offline script executes <code>shutdown SYB_BACKUP with nowait</code>.</p>
Clean	<p>Forcefully stops the Sybase Backup server by using the <code>isql</code> command in the following manner.</p> <p>The agent first executes the command <code>shutdown SYB_BACKUP with wait</code>. If this command fails, the clean script executes <code>shutdown SYB_BACKUP with nowait</code>.</p> <p>If the process does not respond to the <code>shutdown</code> command, the agent scans the process table for the processes that are associated with the configured Sybase Backup server and kills them.</p>

Using the IPC Cleanup feature for the Sybase agent

When the Adaptive Server starts, it creates shared memory files in `$$SYBASE` to store information about the shared memory segments that it uses. Adaptive Server start-up parameter `-M` can be used to change the location of directory that stores shared memory files. The start-up parameter `-M` should be updated in `RUN_$$Server` file.

If the Sybase home directory is unmounted, the Sybase clean script cannot access the shared memory files and does not clean the IPC resources that are allocated by the Sybase processes. Hence, the agent requires shared memory files to be present in the following directory on local system `/var/tmp/sybase_shm/$$Server`.

In the `$$SYBASE/$$SYBASE_ASE/install` directory, edit the `RUN_$$Server` file. Change the location of the directory that stores shared memory files to `/var/tmp/sybase_shm/$$Server` using the `-M` option.

For example, the file `RUN_Sybase_Server` resembles the following before the change:

```
/home/sybase/ASE-15_0/bin/dataserver \  
  
-sSybase_Server \  
  
-d/home/sybase/data/master.dat \  

```

```
-e/home/sybase/ASE-15_0/install/Sybase_Server.log \  
  
-c/home/sybase/ASE-15_0/Sybase_Server.cfg \  
  
-M/home/sybase/ASE-15_0 \  

```

After the replacement, the file resembles:

```
/home/sybase/ASE-15_0/bin/dataserver \  
  
-sSybase_Server \  
  
-d/home/sybase/data/master.dat \  
  
-e/home/sybase/ASE-15_0/install/Sybase_Server.log \  
  
-c/home/sybase/ASE-15_0/Sybase_Server.cfg \  
  
-M/var/tmp/sybase_shm/Sybase_Server \  

```

Here Sybase_Server is the Adaptive server name.

Note: Make sure you create the /var/tmp/sybase_shm/Sybase_Server directory with proper permissions.

Monitoring options for the Sybase agent

The Veritas agent for Sybase provides two levels of application monitoring: basic and detail.

In the basic monitoring mode, the agent for Sybase monitors the Sybase daemon processes to verify whether they are running.

In the detail monitoring mode, the agent performs a transaction on a test table in the database to ensure that Sybase functions properly. The agent uses this test table for internal purposes. Symantec recommends that you do not perform any other transaction on the test table.

See [“About setting up detail monitoring for the agent for Sybase”](#) on page 40.

When the agent detects that the configured Sybase server is not running on a system, the Sybase service group is failed over to the next available system in the

service group's SystemList. The configured Sybase servers are started on the new system, thus ensuring high availability for the Sybase server and data.

Monitoring Sybase instances running in Solaris 10 zones

VCS provides high availability to applications running in non-global zones by extending the failover capability to zones. VCS is installed in a global zone and all VCS agents and engine components run in the global zone. For applications running within non-global zones, agents run entry points inside the zones. If a zone configured under VCS control faults, VCS fails over the entire service group containing the zone. The Veritas agent for Sybase is zone-aware and can monitor Sybase instances running in non-global zones.

For more information on using zones in your VCS environment, refer to the *Veritas Cluster Server Administrator's Guide*.

Action function for the VCS agent for Sybase

The agent for Sybase supports the Action function, which enables you to perform predefined actions on a resource.

To perform an action on a resource, type the following command:

```
# hares -action res token [-actionargs arg1 ...] \  
[-sys system] [-clus cluster]
```

You can also add custom actions for the agent.

For more information, refer to the *Veritas Cluster Server Agent Developer's Guide*.

[Table 1-3](#) describes the agent's predefined action.

Table 1-3 Predefined agent action

Action	Description
checkpoint_all	Performs "checkpoint all" for the Sybase dataserver by connecting to isql session.

Typical Sybase configuration in a VCS cluster

In a typical configuration, VCS is configured in a two node cluster. The Sybase data is installed on shared disks. The Sybase server binaries can be installed locally on both nodes or on shared disks. The agent for Sybase is installed on both nodes. The shared disks can be managed using Veritas Volume Manager (VxVM).

Figure 1-1 illustrates a sample configuration in which the Sybase servers, including binaries and data are installed completely on shared disks or shared cluster disk groups managed using VxVM.

Figure 1-1 Sybase binaries and data on shared disks

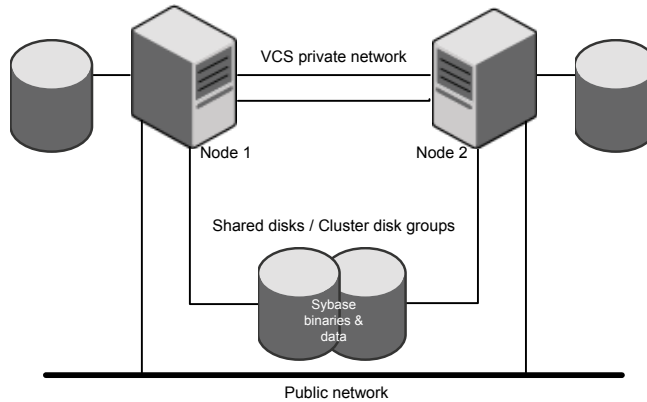
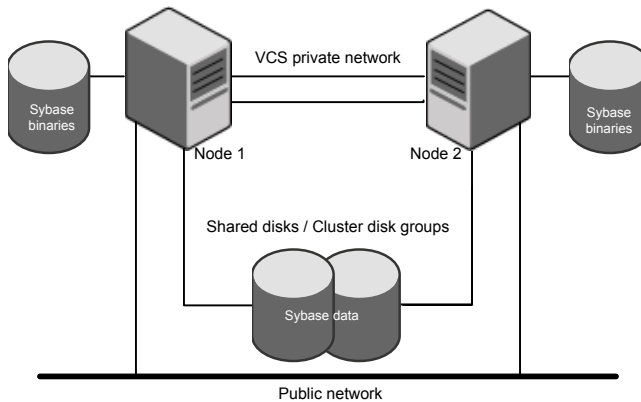


Figure 1-2 illustrates a sample configuration in which Sybase binaries are installed locally on each node in the cluster and the Sybase data is on shared disks or shared cluster disk groups managed using VxVM.

Figure 1-2 Binaries on local disk and Sybase data on shared disks



Installing and configuring Sybase

This chapter includes the following topics:

- [VCS requirements for installing Sybase](#)
- [Installing Sybase in a VCS environment](#)
- [Configuring Sybase for detail monitoring](#)

VCS requirements for installing Sybase

Review the following requirements before you install Sybase in a VCS cluster. Before installing Sybase, make sure that the systems in the cluster have adequate resources to run Sybase and VCS.

Sybase installation directory

The Sybase installation directory can be located on a local disk or a shared storage.

Review the following prerequisites:

- If the Sybase binaries are installed on a local disk, verify that the installation path is same on all the nodes in the cluster. Make sure the Sybase configuration files are identical on all the nodes in the cluster.
- If the Sybase binaries are installed on shared disks, make sure the mount points for the shared disks are same on all the nodes. The Sybase installation directory is specified by the environment variable \$SYBASE. Create the same \$SYBASE mount points on each system.

\$SYBASE directory on shared disks

All database devices, including master devices, sybserverprocs, and information about Sybase user must be located on shared disks. If the database devices are created on file systems, the file systems must also be located on shared disks. Create the same file system mount points on each system to access the shared disks.

System Group and User for Sybase home directory

Make sure you have a system group and user, with the same name and ID, on all cluster nodes. Also, the system user should have the ownership of the Sybase home directory on the shared disk. Type the following commands:

```
# groupadd -g group_id group_name
# useradd -u user_id -g group_name user_name
# chown -R user_name:group_name $SYBASE
```

Database dbspaces

If you use shared disks for dbspaces, change the permissions, or access mode on the disk groups that store the Sybase data. Change the permissions for sybase to 660.

For example, if you use Veritas Volume Manager, type

```
# vxedit -g diskgroup_name set group=dba\
user=sybase mode=660 volume_name
```

Transparent TCP/IP failover

For Sybase server failover to be transparent to Sybase clients, create an IP address as part of the Sybase service group. This IP address must match the dataserver and backup server entries in the \$SYBASE/interfaces file. For information on the format for adding entries to the \$SYBASE/interfaces file, refer to the Sybase documentation.

Long pathname limitation for \$SYBASE

The Linux and Solaris process table limits process names to 79 characters.

A process having a longer pathname is truncated in the table, making it unrecognizable. The Sybase home directory (\$SYBASE) could possibly have such a long pathname. In this case, you can create a soft link to the \$SYBASE directory and use it in place of the long filename in the appropriate Sybase installation files.

Using a soft link pathname avoids the problems that arise due to the long pathname.

After creating the soft link on each system, you must edit the following files, by making the appropriate substitutions.

- The file RUN_Server in the directory \$SYBASE/\$SYBASE_ASE/install.
- The file RUN_Server_back in the directory \$SYBASE/\$SYBASE_ASE/install.

The following example demonstrates how to replace a \$SYBASE pathname with a soft link.

To replace a \$SYBASE pathname with a soft link

- 1 On each system in the cluster, create a soft link to the long pathname.

For example,

```
# ln -s /opt/apps/sybase/home/directory/is/longer/than\
    eighty/characters/sybase /opt/link_to_longpath
```

Now the process is invoked with the short pathname of the soft link.

- 2 Example: The file RUN_Server resembles the following before the change:

```
/opt/apps/sybase/home/directory/is/longer/than/eighty
  /characters/sybase/ASE-12_5/bin/dataserver\
-d/dev/vx/rdisk/db_dg1/vol2\
-e/opt/apps/sybase/home/directory/is/longer
  /than/eighty /characters/sybase/install/fw17i.log\
-M/opt/apps/sybase/home/directory/is/longer/than/eighty
  /characters/sybase\
-sfw17i\
```

After the replacement, the file resembles as follows:

```
/opt/link_to_longpath/ASE-12_5/bin/dataserver\
-sfw17i\
-d/dev/vx/rdisk/db_dg1/vol2\
-e/opt/link_to_longpath/install/fw17i.log\
-M/opt/link_to_longpath\
```

Make sure that the -s option and its argument (fw17i in the example) are the first to be listed. It must be placed within the first eighty characters of the file. Failure to do this will not bring the service group online.

For example, if you do not put the -s option and the argument in the first eighty characters, the command string that will be considered is as follows:

```
/opt/apps/sybase/home/directory/is/longer/than/eighty  
/characters/sybase/ASE-12_5/
```

In this case, the `-s` option will be omitted and the service group will fail to come online. However, if you moved the `-s` to be the first option, the first eighty characters of the command string for the same example will be as follows:

```
/opt/link_to_longpath/ASE-12_5/bin/dataserver\  
-sfw17i\  
-d/dev/vx/rdisk/db_dg1/vol2
```

In this case, the `-s` option is among the first eighty characters.

- 3 In VCS configuration, set the value of the Home attribute for Sybase and SybaseBk as:

```
Home="/opt/link_to_longpath"
```

See [“Sybase resource type”](#) on page 47.

Language settings for the Sybase agent

For the Veritas agent for Sybase to function with the desired locale, make sure that the Sybase installation has the correct localization files. For example, if the Sybase server requires ‘LANG=en_US.UTF-8’ environment variable, verify that the localization files corresponding to language ‘en_US.UTF-8’ are installed with Sybase. Also, edit the file `$VCS_HOME/bin/vcsenv` to contain the following:

```
LANG=en_US.UTF-8;export LANG
```

This change affects all the agents that are configured on the nodes.

Installing Sybase in a VCS environment

For information on how to install Sybase, refer to Sybase documentation.

Configuring Sybase for detail monitoring

This section describes the tasks to be performed to configure a Sybase server for detail monitoring.

See [“About setting up detail monitoring for the agent for Sybase”](#) on page 40.

Note: The steps that are described here are specific to the sample script, `SqlTest.pl`, provided with the agent. If you use a custom script for detail monitoring, you must configure the Sybase database accordingly.

Perform these steps only once in a Sybase cluster.

To configure Sybase for detail monitoring

- 1 Source the `SYBASE.sh` file or `SYBASE.csh` file (depending on the user shell) to set the `$SYBASE` and `$SYBASE_ASE` environment variables.

- 2 Start the Sybase server.

```
# startserver -f ./SYBASE/$SYBASE_ASE/install/RUN_server_name
```

- 3 Start the Sybase client on any cluster node.

```
# isql -Usa -SSYBASE_SERVER_NAME
```

Enter the administrator password when prompted to do so.

- 4 Connect to the master database.

```
# use master
# go
```

- 5 Create a Sybase user account.

```
# sp_addlogin user_name, password
# go
```

The detail monitor script should use this account to make transactions on the database.

- 6 Create a database.

```
# create database database_name
# go
```

The detail monitor script should make transactions on this database.

- 7 If required, restrict the size of the log file for the database.

```
# sp_dboption database_name, "trunc log on chkpt", true
# go
```

- 8** Connect to the database that is created in step 6.

```
# use database_name  
# go
```

- 9** Associate the user created in step 5 with the database created in step 6.

```
# sp_adduser user_name  
# go
```

- 10** Change the user to the one created in step 5.

```
# setuser user_name  
# go
```

- 11** Create a table in the database.

```
# create table table_name (lastupd datetime)  
# go
```

The detail monitor script should make transactions on this table.

If you use the `SqlTest.pl` for detail monitoring, make sure you create a table with a `lastupd` field of type `datetime`.

- 12** Verify the configuration by adding an initial value to the table.

```
# insert into table_name (lastupd) values (getdate())  
# go
```

- 13** Exit the database.

```
# exit
```


Installing, upgrading, and removing the agent for Sybase

This chapter includes the following topics:

- [Before you install or upgrade the agent for Sybase](#)
- [Installing the agent for Sybase](#)
- [Disabling the agent for Sybase](#)
- [Removing the agent for Sybase](#)
- [Upgrading the agent for Sybase](#)

Before you install or upgrade the agent for Sybase

Ensure that you meet the following prerequisites to install the Veritas agent for Sybase:

- Verify that VCS is installed and configured. Symantec recommends installing the VCS graphical user interface. If required, review the *Veritas Cluster Server Installation Guide*.
- Verify that Sybase is installed and configured on all cluster nodes on which you will install the agent. Review the Sybase documentation for more information.

See [“VCS requirements for installing Sybase”](#) on page 19.

- Verify that the sybase account is valid and identical on all cluster systems that will run Sybase. Verify that the sybase user account has permissions to execute Sybase binaries.
See “[System Group and User for Sybase home directory](#)” on page 20.

Installing the agent for Sybase

The agent binaries for Veritas Cluster Server agent for Sybase is part of VRTSvcsea package. The VRTSvcsea package is already installed if you chose to install all packages or recommended packages during VCS installation. You must manually install the VRTSvcsea package if you installed minimal packages during VCS installation.

You can install the Veritas Cluster Server agent for Sybase from the product disc. Install the agent for Sybase on each node in the cluster.

To install the agent on Solaris systems

- 1 Log in as superuser.
- 2 Make sure that the agent is not already installed.
Navigate to /opt/VRTSagents/ha/bin and list the contents of the directory. If the command returns the VCS agents for Sybase, you can skip this procedure.
- 3 Create a temporary directory for installation.

```
# mkdir /tmp/install
```

- 4 Insert the software disc into the system's disc drive.
 - If you are running Solaris volume-management software, the software automatically mounts the disc as /cdrom/cdrom0. Type the following to go to the location.

```
# cd /cdrom/cdrom0
```

- If you are not running Solaris volume-management software, you must mount the disc manually. For example,

```
# mount -F hsfs -o ro /dev/dsk/c0t6d0s2 /cdrom
```

In this example, /dev/dsk/c0t6d0s2 is the default for the disc drive. After the disc is mounted, type the following command to go to the location.

```
# cd /cdrom
```

- 5 To navigate to the directory that contains the packages, and then install the agent, run the following commands:

```
# cd pkgs
```

Caution: The VRTSvcsea package includes the agent binaries for the Sybase agent. The package also installs the VCS agents for DB2 and Oracle.

```
# pkgadd -d VRTSvcsea.pkg
```

- 6 To upgrade the VRTSvcsea package, apply the following patch:

```
# cd ../patches
```

```
# patchadd 143290-01
```

- 7 Copy the file SybaseTypes.cf from /etc/VRTSagents/ha/conf/Sybase/ directory to /etc/VRTSvcscs/conf/config directory.

To install the Japanese language pack on Solaris systems

- 1 After you have installed the agent, insert the "Language" disc into a drive connected to the system.
 - If you are running Solaris volume-management software, the software automatically mounts the disc as /cdrom/cdrom0. Type the following to go to the location.

```
# cd /cdrom/cdrom0
```

- If you are not running Solaris volume-management software, you must mount the disc manually. For example:

```
# mount -F hsfs -o ro /dev/dsk/c0t6d0s2 /cdrom
```

Where, in this example, /dev/dsk/c0t6d0s2 is the default for the disc drive. After the disc is mounted, type the following commands to go to the location.

```
# cd /cdrom
```

- 2 Install the Japanese package.

```
# pkgadd -d VRTSjacse.pkg
```

- 3 To upgrade the VRTSjacse package, apply the following patch:

```
# patchadd 143713-01
```

Disabling the agent for Sybase

To disable the agent on a system, you must first change the Sybase service group to an OFFLINE state. You can stop the application completely, or switch the service group to another system.

To disable the agent

- 1 Determine if the service group is online. At the prompt, type:

```
# hagrpl -state service_group -sys system_name
```

- 2 If the service group is online, switch the service group to another system or take it offline. At the prompt, type:

```
# hagrpl -switch service_group -to system_name
```

Or

```
# hagrpl -offline service_group -sys system_name
```

- 3 Stop the agent on the system. At the prompt, type:

```
# haagent -stop Sybase -sys system_name
```

```
# haagent -stop SybaseBk -sys system_name
```

- 4 When you get the message "Please look for messages in the log file," check the file `/var/VRTSvcscs/log/engine_A.log` for a message confirming the agent has stopped.

You can also use the `ps` command to verify that the agent has stopped.

- 5 When the agent has stopped, you can remove the system, the service group, or the resource type from the VCS configuration.

For more information, refer to the chapter on reconfiguring VCS from the command line in *Veritas Cluster Server Administrator's Guide*.

Removing the agent for Sybase

This section provides steps to remove the agent from the cluster.

Warning: The agent package `VRTSvcsea` includes the VCS agents for Oracle, Sybase, and DB2. So, the following procedure to remove the VCS agent for Sybase removes all the other agents also.

To remove the agent for Sybase

- 1 Take the Sybase and SybaseBk resources offline.
- 2 Stop the agent for Sybase.

```
# haagent -stop Sybase -sys system_name
```

Perform this step on all nodes on which the agent for Sybase is running.

- 3 Stop the agent for SybaseBk.

```
# haagent -stop SybaseBk -sys system_name
```

Perform this step on all nodes on which the agent for SybaseBk is running.

- 4 Type the following command to remove the agent from all nodes in the cluster. Answer prompts accordingly.

```
# pkgrm VRTSvcsea
```

If you installed the Japanese language package, type the following command:

```
# pkgrm VRTSjacse
```

Upgrading the agent for Sybase

This section describes the procedure to upgrade the Veritas agent for Sybase in a Veritas Cluster Server (VCS) cluster. Execute the following steps on each node of the VCS cluster.

Note: You can upgrade the VCS agent for Sybase from versions 4.0, 4.1, 5.0 and 5.1 to 5.1 SP1. See [“Installing the agent for Sybase”](#) on page 26.

To upgrade the VCS for Sybase

- 1 Save the VCS configuration and stop the VCS engine.

```
# haconf -dump -makero  
# hastop -all -force
```

- 2 Back up the configuration file, main.cf to a location on the cluster node.

- 3 Based on your current VCS Agent version for Sybase, perform the appropriate steps on all systems that have the agent installed:

To	Perform the following steps
Upgrade the VCS agent from a version earlier than 5.1	<ol style="list-style-type: none">1. Remove the VCS agent for Sybase, by using the following command: <pre># pkgrm VRTSvcssy</pre>2. If you installed the Japanese language package, use the following command: <pre># pkgrm VRTSjacss</pre>3. Delete the following file : <pre>/etc/VRTSvcs/conf/config/SybaseTypes.cf</pre>4. Install the Veritas Cluster Server Agent for Sybase. See "Installing the agent for Sybase" on page 26.
Upgrade the VCS agent from 5.1 or later	<ol style="list-style-type: none">1. Navigate to the directory containing patches: <pre># cd patches</pre>2. Apply the patch by running the following command : Caution: If you run the following command, the VCS agents for Oracle and DB2 are also upgraded. <pre># patchadd 143290-01</pre> For Opteron , the patch id is: <pre>143297-01</pre>3. If you installed the VRTSjacse package, then apply the following patch from the "Language" disc: <pre># patchadd 143713-01</pre>

- 4 Make sure that you have copied the SybaseTypes.cf file from the /etc/VRTSagents/ha/conf/Sybase/ directory to /etc/VRTSvcs/conf/config directory.

Make sure to update the newly copied SybaseTypes.cf file with all the type-level changes that you had made to the older SybaseTypes.cf file.

For example, if you had changed the value of the MonitorInterval attribute from the default 60 to 120 seconds, the SybaseTypes.cf file gets updated. You must apply these type-level changes manually to the newly copied SybaseTypes.cf file.

- 5 Copy the main.cf file from the backed up location to /etc/VRTSvcs/conf/config directory.
- 6 Edit the main.cf file located under /etc/VRTSvcs/conf/config.
 - If you configured detail monitoring, make sure the Monscript attribute of the Sybase resource type is properly configured.
 - Remove the Monscript attribute for the SybaseBk resource type, if configured.
 - Replace the password specified for the SAPswd attribute (of Sybase and SybaseBk resources) and UPword attribute (of Sybase resource) with encrypted passwords.
See [“Encrypting passwords for Sybase”](#) on page 39.
 - Save the main.cf file.

- 7 Verify the configuration.

```
# cd /etc/VRTSvcs/conf/config
# hacf -verify
```

- 8 Start VCS on the local node.
- 9 Start VCS on other nodes.

Configuring VCS service groups for Sybase

This chapter includes the following topics:

- [About configuring service groups for Sybase](#)
- [Before configuring the service group for Sybase](#)
- [Configuring the service groups for Sybase](#)
- [Configuring the service group for Sybase from Cluster Manager \(Java console\)](#)
- [Configuring the service group for Sybase using the command line](#)
- [Encrypting passwords for Sybase](#)
- [About setting up detail monitoring for the agent for Sybase](#)

About configuring service groups for Sybase

Configuring the Sybase service group involves configuring service group resources and defining attribute values for the configured resources. You must have administrator privileges to create and configure a service group. Before you configure the agent, review the Sybase resource types and their attributes.

Before configuring the service group for Sybase

Before you configure the Sybase service group, you must meet the following prerequisites:

- Verify that VCS is installed and configured on all nodes in the cluster where you plan to configure the service group. For more information on installing VCS:
See the *Veritas Cluster Server Installation Guide*.
- Verify that Sybase is installed and configured identically on all nodes in the cluster.
See “[VCS requirements for installing Sybase](#)” on page 19.
- Verify that the Veritas agent for Sybase is installed on all nodes in the cluster.
See “[Installing the agent for Sybase](#)” on page 26.
- Verify the type definition for Veritas agent for Sybase is imported into the VCS engine.
See “[Importing the SybaseTypes.cf file](#)” on page 34.

Importing the SybaseTypes.cf file

Before you configure the Sybase service group, you must import the SybaseTypes.cf file to the VCS engine.

Note: Before you start the following procedure, for more instructions on Java GUI, refer to the *Veritas Cluster Server 5.1 Service Pack 1 Installation and Configuration Guide*.

To import the SybaseTypes.cf file using the Cluster Manager (Java Console)

- 1 On one of the nodes in the cluster, start the Cluster Manager (Java Console).
Type:

```
# haGUI&
```

- 2 Log in to the cluster and wait for the Cluster Explorer to launch.
- 3 From the **File** menu select **Import Types**. Switch to the read/write mode if prompted.
- 4 In the Import Types dialog box, select the file:

```
/etc/VRTSagents/ha/conf/Sybase/SybaseTypes.cf
```

- 5 Click **Import** and wait for the file to import.
- 6 Save the configuration.

To import the SybaseTypes.cf file using the command line

- 1 Log in to a cluster system as superuser.
- 2 Make the cluster configuration as read-only. This action ensures that all changes to the existing configuration have been saved and further changes are prevented while you modify main.cf:

```
# haconf -dump -makero
```

- 3 To ensure that VCS is not running while you edit main.cf, issue the following command to stop the VCS engine on all systems. Leave the resources that are available online.

```
# hstop -all -force
```

- 4 Make a backup copy of the main.cf file.

```
# cd /etc/VRTSvcs/conf/config  
# cp main.cf main.cf.orig
```

- 5 Edit the main.cf file to include the SybaseTypes.cf file.

```
# include "/etc/VRTSagents/ha/conf/Sybase/SybaseTypes.cf"
```

The Sybase types definition is imported to the VCS engine. The agent for Sybase can be configured without interrupting or stopping VCS.

Configuring the service groups for Sybase

You can configure the service groups for Sybase using the following methods:

- By using VCS Cluster Manager (Java Console) to edit a resource group template for the agent.
See [“Configuring the service group for Sybase from Cluster Manager \(Java console\)”](#) on page 36.
- By using the types configuration files and directly editing the sample main.cf file supplied with the agent. This method requires you to restart VCS before the configuration takes effect.
See [“Configuring the service group for Sybase using the command line”](#) on page 38.
- By using the Veritas Operations Manager (VOM).
For more information, see VOM documentation.

Configuring the service group for Sybase from Cluster Manager (Java console)

A template for the Sybase resource groups is automatically installed with the Veritas agent for Sybase. Using the VCS cluster Manager (Java console), you can view the template, which displays the Sybase service group, its resources and their attributes. You can dynamically modify the attributes' values as necessary for your configuration.

Note: Before you start the following procedure, for more instructions on Java GUI, refer to the *Veritas Cluster Server 5.1SP1 Installation and Configuration Guide*.

To configure a service group from the Java console

- 1 Make sure that the Sybase type definition file `SybaseTypes.cf` is imported in your configuration.
See [“Configuring the service groups for Sybase”](#) on page 35.
- 2 Launch the Cluster Configuration wizard using any of the following ways:
 - From the Cluster Explorer menu, select **Tools > Configuration Wizard**.
 - If no service groups exist on the system, Cluster Explorer prompts you to launch the Cluster Configuration wizard. Click **Yes** when prompted.The Loading Templates Information window appears, and launches the wizard.
- 3 Review the information in the Welcome dialog box and click **Next**.
- 4 Specify the name of the service group and the target systems on which the service group is configured.
 - Enter the name of the service group.
 - From the **Available Systems** box, select the systems on which to configure the service group.
 - Click the right arrow to move the selected systems to the **Systems for Service Group** box. To remove a system from the box, select the system and click the left arrow.
 - Specify system priority for the service group to failover. System priority is numbered sequentially, with the lowest assigned number denoting the highest priority.
 - Select the **Service Group Type** as Failover and click **Next**.
- 5 On the **Would you like to use a template to configure the service group?** dialog box, click **Next** to configure the service group using a template.

- 6 Select the **SybaseGroup** template to configure a Sybase service group.
 If applicable, a window opens notifying that names of some resources within the new service group are already in use. Resolve the name clashes, if any and click **Next**.
- 7 Click **Next** to create the service group that is based on the selected template.
 A progress indicator displays the percentage of the commands that are executed to create the service group. The actual commands are displayed at the top of the indicator.
- 8 After the service group is created, click **Next** to edit the attributes for the resources.
 The left pane in the dialog box lists all the resources for the Sybase service group. Select a resource from the left pane to list the attributes on the right pane. The attributes in bold denote mandatory attributes. You can modify the attribute values as given in the procedure that follows .
- 9 Click **Finish** to accept the default values and complete the configuration.

To edit the Sybase service group resource attributes

- 1 Select the resource from the list on the left pane. The resource attributes appear in the right pane.
- 2 Select the attribute to be modified and click the edit icon in the **Edit** column.
- 3 In the Edit Attribute dialog box, enter the attribute values. To modify the scope of the attribute, choose the **Global** or **Local** option.
- 4 Click **OK**.
- 5 Repeat the procedure for each resource and click **Finish**. Edit the attributes for all the resources according to your configuration.
- 6 Follow the wizard instructions to complete the configuration. Click **Finish** to quit the wizard.

Caution: For added security, you must always provide a secure value for passwords.

See [“Encrypting passwords for Sybase”](#) on page 39.

Configuring the service group for Sybase using the command line

The Veritas agent for Sybase contains a sample configuration file that can be used as reference to directly modify your present configuration file. This method requires you to restart VCS before the configuration takes effect.

To configure a service group for Sybase from the command line

- 1 Log in to a cluster system as superuser.
- 2 Make sure the Sybase type definition is imported into VCS engine.
See “[Configuring the service groups for Sybase](#)” on page 35.
- 3 Edit the main.cf file. Use the file `/etc/VRTSagents/ha/conf/Sybase/sample_main.cf` for reference.
 - Create a Sybase service group.
 - Create the Sybase and SybaseBk resources.
See “[Sybase resource type](#)” on page 47.
See “[SybaseBk resource type](#)” on page 53.
 - Edit the default attributes to match the parameters in your configuration. For added security, you must always provide a secure value for passwords. See “[Encrypting passwords for Sybase](#)” on page 39.
 - Assign dependencies to the newly created resources. Refer to the sample file `/etc/VRTSagents/ha/conf/Sybase/sample_main.cf`. See the *Veritas Cluster Server Administrator's Guide* for more information on assigning dependencies.
- 4 Save and close the file.
- 5 Verify the syntax of the file `/etc/VRTSvcs/conf/config/main.cf`

```
# hacf -verify config
```
- 6 Start VCS on local node.

```
# hstart
```
- 7 Start VCS on other nodes.
- 8 If the system is listed in `AutoStartList` attribute of the Sybase service group, verify that all Sybase service group resources are brought online.

```
# hagrps -state
```

- 9 Take the service group offline and verify that all resources are stopped.

```
# hagrps -offline service_group -sys system_name  
  
# hagrps -state
```

- 10 Bring the service group online again and verify that all resources are available.

```
# hagrps -online service_group -sys system_name  
  
# hagrps -state
```

- 11 Switch the Sybase service group to the other node.

```
# hagrps -switch service_group -to system_name
```

- 12 Verify that all Sybase service group resources are brought online on the other node.

```
# hagrps -state
```

- 13 On all systems, look at the following log files for any errors or status.

```
/var/VRTSvcs/log/engine_A.log  
/var/VRTSvcs/log/Sybase_A.log  
/var/VRTSvcs/log/SybaseBk_A.log
```

Encrypting passwords for Sybase

VCS provides a `vcscrypt` utility to encrypt user passwords. Encrypt passwords before specifying them for Sybase and SybaseBk resource type definition.

The `vcscrypt` utility also allows you to encrypt the agent passwords using a security key. The security key supports AES (Advanced Encryption Standard) encryption which creates a more secure password for the agent. See the *Veritas Cluster Server Administrator's Guide* for more information.

To encrypt passwords

- 1 From the path `$VCS_HOME/bin/`, run the `vcseencrypt` utility.
- 2 Type the following command.

```
# vcseencrypt -agent
```

The utility prompts you to enter the password twice. Enter the password and press Return.

```
Enter New Password:
```

```
Enter Again:
```

- 3 The utility encrypts the password and displays the encrypted password.
- 4 Enter this encrypted password as the value for the attribute.

Copy the encrypted password for future reference.

About setting up detail monitoring for the agent for Sybase

The Veritas agent for Sybase provides two levels of application monitoring: basic and detail. In basic monitoring, Sybase resource monitors the Sybase daemon processes to verify that they are continuously active.

In detail monitoring, the Sybase resource performs transactions on a test table in the database to ensure that the Sybase server functions properly. The agent uses this test table for internal purposes. Symantec recommends that you do not perform any other transaction on the test table. The agent uses the script that is defined in the attribute `Monscript` of the Sybase resource. During detail monitoring, the agent executes the specified script. If the script successfully executes, the agent considers the database available. You can customize the default script according to your configurations.

To activate detail monitoring, the `DetailMonitor` attribute must be set to a positive integer and `User`, `UPword`, `Db`, and `Table` attributes must not be empty (""). The attribute `Monscript`, which contains the path of the detail monitor script, must also exist and must have execute permissions for the root.

Disabling detail monitoring for the agent for Sybase

Perform the following steps to disable detail monitoring.

To disable detail monitoring

- ◆ Disable detail monitoring for Sybase.

```
# hares -modify Sybase_resource DetailMonitor 0
```

Enabling detail monitoring for the agent for Sybase

Perform the following steps to enable detail monitoring on a database.

To enable detail monitoring

- 1 Make sure Sybase server is configured for detail monitoring.

See “[Configuring Sybase for detail monitoring](#)” on page 22.

- 2 Make the VCS configuration writable.

```
# haconf -makerw
```

- 3 Enable detail monitoring for Sybase.

```
# hares -modify Sybase_resource DetailMonitor 1
# hares -modify Sybase_resource User user_name
# hares -modify Sybase_resource UPword encrypted-password
# hares -modify Sybase_resource Db database_name
# hares -modify Sybase_resource Table table_name
# hares -modify Sybase_resource Monscript
"/opt/VRTSagents/ha/bin/Sybase/SqlTest.pl"
```

- 4 Save the configuration.

```
# haconf -dump [-makero]
```

Note: If detail monitoring is configured and the database is full, the SQL queries take considerable time to commit the results. In such a case, the monitor routine for the agent fails and attempts to fail over the service group. This issue is not encountered if detail monitoring is not configured.

Administering VCS service groups for Sybase

This chapter includes the following topics:

- [About administering service groups for Sybase](#)
- [Bringing the Sybase service group online](#)
- [Taking the Sybase service group offline](#)
- [Switching the Sybase service group](#)
- [Modifying the Sybase service group configuration](#)
- [Viewing the agent log for Sybase](#)

About administering service groups for Sybase

You can administer service groups with the Cluster Manager (Java Console), the Veritas Operations Manager, or from the command line. The following procedures use the Cluster Manager (Java Console).

Bringing the Sybase service group online

Perform the following steps to bring a service group online. Note that in the initial few cycles of bringing a service group online, the memory usage by the agent can spike.

To bring a service group online

- 1 From Cluster Explorer, click the **Service Groups** tab in the configuration tree.
- 2 Right-click the service group and click **Enable Resources** to enable all the resources in this group.
- 3 Right-click the service group, hover over **Enable**, and select either the node or all the nodes where you want to enable the service group.
- 4 Save and close the configuration. Click **File > Save Configuration**, then **Close Configuration**.
- 5 Right-click the service group, pause over **Online**, and select the system where you want to bring the service group online.

Taking the Sybase service group offline

Perform the following procedure from Cluster Manager (Java Console) to take the service group offline. Note that in the initial few cycles of taking a service group offline, the agent's memory usage can spike.

To take a service group offline

- 1 In the Cluster Explorer configuration tree with the Service Groups tab selected, right-click the service group that you want to take offline.
- 2 Choose **Offline**, and select the appropriate system from the pop-up menu.

Switching the Sybase service group

The process of switching a service group involves taking it offline on its current system and bringing it online on another system. Perform the following procedure from Cluster Manager (Java Console) to switch the service group.

To switch a service group

- 1 In the Cluster Explorer configuration tree with the Service Groups tab selected, right-click the service group.
- 2 Choose **Switch To**, and select the appropriate system from the pop-up menu.

Modifying the Sybase service group configuration

You can dynamically modify the Sybase agent using several methods, including the Cluster Manager (Java Console), Veritas Operations Manager, and the command line.

See the *Veritas Cluster Server Administrator's Guide* for more information.

Viewing the agent log for Sybase

The Veritas agent for Sybase logs messages to the following files:

`/var/VRTSvcs/log/engine_A.log`

`/var/VRTSvcs/log/Sybase_A.log`

`/var/VRTSvcs/log/SybaseBk_A.log`

Resource type definitions for Sybase

This appendix includes the following topics:

- [About the resource type and attribute definitions for Sybase](#)
- [Sybase resource type](#)
- [SybaseBk resource type](#)

About the resource type and attribute definitions for Sybase

The resource type represents the VCS configuration definition of the agent. It also specifies how the configuration file, `main.cf`, defines the agent. Configuring the agent involves assigning values to the resource type attributes.

For the resource type attributes:

See [“Attribute definitions for the Sybase agent”](#) on page 48.

See [“Attribute definitions for the SybaseBk agent”](#) on page 53.

For the sample `main.cf` configuration files:

See [“Sample configuration for agent for Sybase on Solaris systems”](#) on page 60.

Sybase resource type

The type definitions and attribute definitions for the Sybase resource type are described as follows.

Type definition for the Sybase agent

The resource type definition for the agent for Sybase is as follows.

```
type Sybase (
    static boolean AEPTIMEOUT = 1
    static keylist SupportedActions = { "checkpoint_all" }
    str Server
    str Owner
    str Home
    str Version
    str SA
    str SAPswd
    str Run_ServerFile
    int DetailMonitor = 0
    str User
    str UPword
    str Db
    str Table
    str Monscript = "/opt/VRTSagents/ha/bin/Sybase/SqlTest.pl"
    boolean WaitForRecovery = 0
    static str ArgList[] = { Server, Owner, Home, Version, SA,
        SAPswd, User, UPword, Db, Table,
        Monscript, DetailMonitor, WaitForRecovery, Run_ServerFile }
    static int ContainerOpts{} = { RunInContainer=1,
        PassCInfo=0 }
    static str AgentDirectory = "/opt/VRTSagents/ha/bin/Sybase"
)
```

Attribute definitions for the Sybase agent

Review the description of the Sybase agent attributes. The agent attributes are classified as required, optional, and internal.

[Table A-1](#) lists the required attributes.

Table A-1 Required attributes

Required Attributes	Definition
Server	<p>The \$DSQUERY ASE name. Only one server should be configured in a Sybase service group. The advantage of configuring sybase resources in a separate service group is, each sybase dataserver can failover independently. When multiple sybase resources are configured in a single service group, even if one of the “n” dataservers fail, the whole service group will be failed over.</p> <p>Type and dimension: string-scalar</p>
Owner	<p>Sybase user as the defined owner of executables and database files in any of the sources (such as NIS+, /etc/hosts, and so on) specified in the /etc/nsswitch.conf file for passwd entry. The Sybase executables and database files are accessed in the context of this user.</p> <p>Type and dimension: string-scalar</p> <p>See “System Group and User for Sybase home directory” on page 20.</p>
Home	<p>The \$SYBASE path to Sybase binaries and configuration files.</p> <p>Type and dimension: string-scalar</p>
Version	<p>Version of Sybase ASE.</p> <p>Type and dimension: string-scalar</p>
SA	<p>Sybase database administrator. This attribute is required to connect to the ASE for shutdown.</p> <p>Type and dimension: string-scalar</p>
SAPswd	<p>Encrypted password for Sybase database administrator. This password is required to connect to the ASE for shutdown.</p> <p>Type and dimension: string-scalar</p> <p>See “Encrypting passwords for Sybase” on page 39.</p> <p>Note: You need not specify a value for this attribute if the SA user does not require a password.</p>

[Table A-2](#) lists the optional attributes.

Table A-2 Optional attributes

Optional Attributes	Definition
DetailMonitor	<p>Specifies whether the Sybase server is monitored in detail. A positive integer value indicates that the resource monitors the Sybase server in detail. Value 0 denotes it does not. Default is 0.</p> <p>Type and dimension: int-scalar</p>
User	<p>The database user, in the context of which, the transactions are performed on the database.</p> <p>Type and dimension: string-scalar</p> <p>Note: You must specify a value for this attribute if DetailMonitor is set to a positive integer value.</p>
UPword	<p>Encrypted password for the database user.</p> <p>See “Encrypting passwords for Sybase” on page 39.</p> <p>Type and dimension: string-scalar</p> <p>Note: You must specify a value for this attribute if DetailMonitor is set to a positive integer value. However, you need not specify a value for this attribute if the database user does not require a password.</p>
Db	<p>Name of the database used for detailed monitoring. The table used by the detail monitor script resides in this database.</p> <p>Type and dimension: string-scalar</p> <p>Note: You must specify a value for this attribute if DetailMonitor is set to a positive integer value.</p>
Table	<p>Name of the table on which the detail monitoring script performs the transactions.</p> <p>Type and dimension: string-scalar</p> <p>Note: You must specify a value for this attribute if DetailMonitor is set to a positive integer value.</p>
Monscript	<p>The path to the detail monitor script; the default value for this attribute is the path for the script, SqlTest.pl, provided with the agent.</p> <p>Type and dimension: string-scalar</p> <p>Note: You must specify a value for this attribute if DetailMonitor is set to a positive integer value.</p>

Table A-2 Optional attributes (*continued*)

Optional Attributes	Definition
WaitForRecovery	<p>The recovery procedures rebuild the server's databases from the transaction logs. This boolean attribute indicates if the agent should wait during Online agent function, till recovery has been completed and all databases that can be made online are brought online. This feature is not supported for pre-12.5.1 Sybase ASE server.</p> <p>The default value for WaitForRecovery is 0.</p> <p>Type and dimension: boolean-scalar</p>
Run_ServerFile	<p>Specifies the location of the RUN_SERVER file for the Sybase instance. The default location of this file is used if no value is specified for this attribute.</p> <p>The default value of Run_ServerFile is "".</p> <p>Type and dimension: string-scalar</p>

Table A-2 Optional attributes (*continued*)

Optional Attributes	Definition
ContainerOpts (Only Solaris 10)	<p>This resource-type level attribute specifies the container options for the Sybase instances that run in the context of Solaris containers (zones or projects). This attribute has the following keys, which can take values 0 or 1:</p> <ul style="list-style-type: none"> <p>■ RunInContainer (RIC) Set the key value as 1 for the Sybase agent to monitor Sybase instances running in the context of Solaris container. Set the key value as 0 if you do not want to run the Sybase resource in the context of Solaris container. Default is 1.</p> <p>■ PassCInfo (PCI) Set the key value as 1 for the Sybase resource to get the container information defined in the VCS service group's ContainerInfo attribute. Set the key value as 0 if you do not want to get the container information. Default is 1.</p> <p>■ PassLoadInfo (PLI) Set the key value as 1 for the Sybase resource to get the load dimensions defined in the VCS service group's Load attribute. Set the key value as 0 if you do not want to get the load information. Default is 0. See <i>Veritas Cluster Server Administrator's Guide</i> and the <i>Veritas Storage Foundation and High Availability Solutions Virtualization Guide</i>. Type and dimension: static-assoc-int</p>

[Table A-3](#) lists the internal attribute for Sybase agent.

This attribute is for internal use only. Symantec recommends not to modify the value of this attribute.

Table A-3 Internal attribute

Internal attribute	Definition
AgentDirectory	<p>Specifies the location of the binaries, scripts, and other files related to the agent for Sybase.</p> <p>Type and dimension: static-string</p>

SybaseBk resource type

Type definition for the SybaseBk agent

The resource type definition for the agent for Sybase is as follows.

```
type SybaseBk (
    str Backupserver
    str Owner
    str Home
    str Version
    str Server
    str SA
    str SApwd
    str Run_ServerFile
    static str ArgList[] = { Backupserver, Owner, Home, Version,
    Server, SA, SApwd, Run_ServerFile }
    static int ContainerOpts{} = { RunInContainer=1, PassCInfo=0 }
    static str AgentDirectory = "/opt/VRTSagents/ha/bin/SybaseBk"
)
```

Attribute definitions for the SybaseBk agent

Review the description of the SybaseBk agent attributes. The agent attributes are classified as required and internal.

[Table A-4](#) lists the required attributes for SybaseBk resource.

Table A-4 Required attributes

Attributes	Definition
Server	<p>The \$DSQUERY Backup name. Only one server should be configured in a Sybase service group. The advantage of configuring sybase resources in a separate service group is, each sybase dataserver can failover independently. When multiple sybase resources are configured in a single service group, even if one of the “n” dataservers fail, the whole service group will be failed over.</p> <p>Type and dimension: string-scalar</p>

Table A-4 Required attributes (*continued*)

Attributes	Definition
Owner	Sybase user as the defined owner of executables and database files in any of the sources (such as NIS+, /etc/hosts, and so on) specified in the /etc/nsswitch.conf file for passwd entry. The Sybase executables and database files are accessed in the context of this user. Type and dimension: string-scalar
Home	The \$SYBASE path to Sybase binaries and configuration files. Type and dimension: string-scalar
Version	Version of Sybase Backup Server. Type and dimension: string-scalar
Backupserver	The \$BACKUP SYBASE Backup Server name. Type and dimension: string-scalar
SA	Sybase database administrator. This attribute is required to connect to the ASE for shutdown. Type and dimension: string-scalar
SAPswd	Encrypted password of Sybase database administrator. This password is required to connect to the ASE for shutdown. Type and dimension: string-scalar See “Encrypting passwords for Sybase” on page 39. Note: You need not specify a value for this attribute if the SA user does not require a password.

[Table A-5](#) lists the optional attribute for SybaseBk agent.

Table A-5 Optional attribute

Optional attribute	Definition
Run_ServerFile	Specifies the location of the RUN_SERVER file for the Sybase instance. The default location of this file is used if no value is specified for this attribute. The default value of Run_ServerFile is "". Type and dimension: string-scalar

Table A-5 Optional attribute (*continued*)

Optional attribute	Definition
ContainerOpts (Only Solaris 10)	<p>This resource-type level attribute specifies the container options for the Sybase instances that run in the context of Solaris containers (zones or projects). This attribute has the following keys, which can take values 0 or 1:</p> <ul style="list-style-type: none"> <p>■ RunInContainer (RIC) Set the key value as 1 for the Sybase agent to monitor Sybase instances running in the context of Solaris container. Set the key value as 0 if you do not want to run the Sybase resource in the context of Solaris container. Default is 1.</p> <p>■ PassCInfo (PCI) Set the key value as 1 for the Sybase resource to get the container information defined in the VCS service group's ContainerInfo attribute. Set the key value as 0 if you do not want to get the container information. Default is 1.</p> <p>■ PassLoadInfo (PLI) Set the key value as 1 for the Sybase resource to get the load dimensions defined in the VCS service group's Load attribute. Set the key value as 0 if you do not want to get the load information. Default is 0. See <i>Veritas Cluster Server Administrator's Guide</i> and the <i>Veritas Storage Foundation and High Availability Solutions Virtualization Guide</i>. Type and dimension: static-assoc-int</p>

[Table A-6](#) lists the internal attribute for SybaseBk agent.

This attribute is for internal use only. Symantec recommends not to modify the value of this attribute.

Table A-6 Internal attribute

Internal attribute	Definition
AgentDirectory	<p>Specifies the location of the binaries, scripts, and other files related to the agent for Sybase.</p> <p>Type and dimension: static-string</p>

Sample configurations for Sybase

This appendix includes the following topics:

- [About the sample configuration for the Sybase agent](#)
- [Resource dependency graph for the Sybase agent](#)
- [Sample configuration for agent for Sybase on Solaris systems](#)
- [Sample configuration for the Sybase agent in Solaris zones](#)

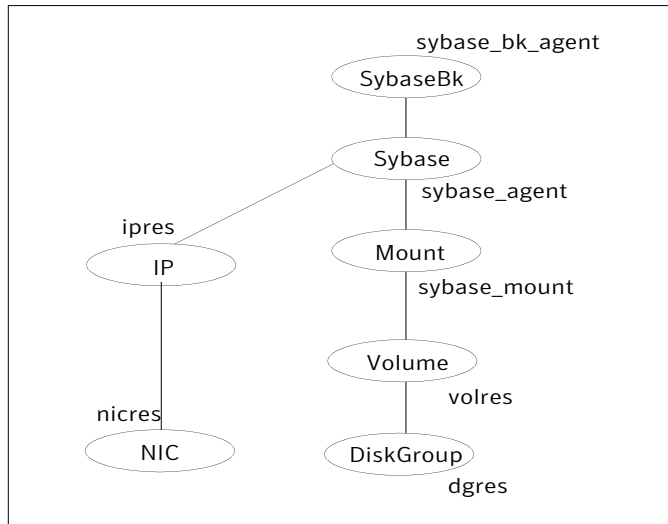
About the sample configuration for the Sybase agent

This appendix describes a typical service group that is configured to monitor the state of Sybase servers in a VCS cluster. The sample configuration graphically depicts the resource types, resources, and resource dependencies within the service group. Review these dependencies carefully before you configure the agent. For more information about these resource types, see the *Veritas Cluster Server Bundled Agents Reference Guide*.

Resource dependency graph for the Sybase agent

[Figure B-1](#) illustrates the configuration's dependency graph for Solaris.

Figure B-1 Dependency graph



The dependency graph depicts a single Sybase instance configuration. The configuration contains a disk group with a single volume. The volume is monitored using a Volume resource and mounted using a Mount resource. The Mount resource requires Volume resource, which in turn requires the DiskGroup resource. The service group IP address for Sybase server is monitored using the IP and NIC resource types. The Sybase server can be started after each of these resources are brought online. The Backup Server is started after the Sybase SQL Server is online.

Resource dependency for Sybase configured in Solaris zones

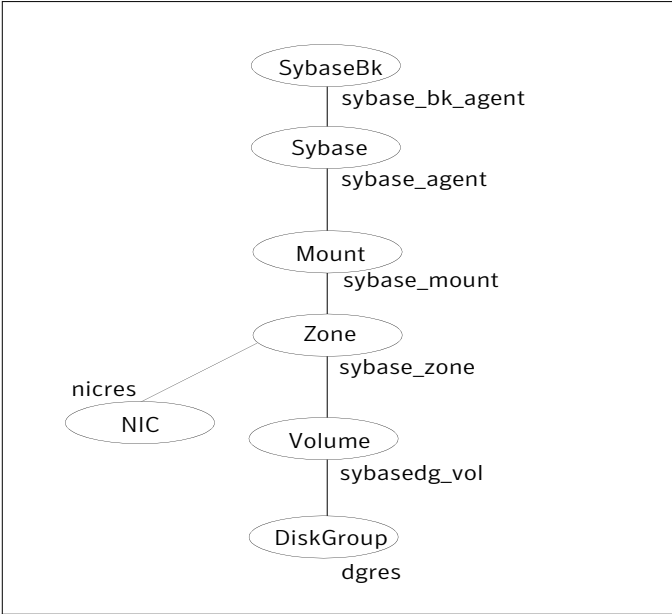
The following examples describe a typical service group that is configured to monitor the state of a Sybase instance that is configured in a Solaris zone.

- Zone root on local disk
- Zone root on shared disk

If the root file system of a zone is on the local disk of each node, the file system is mounted when the system is booted. Hence, the service group does not need to have separate DiskGroup and Volume resources for the zone.

Figure B-2 shows a configuration in which zone root is on the local disk.

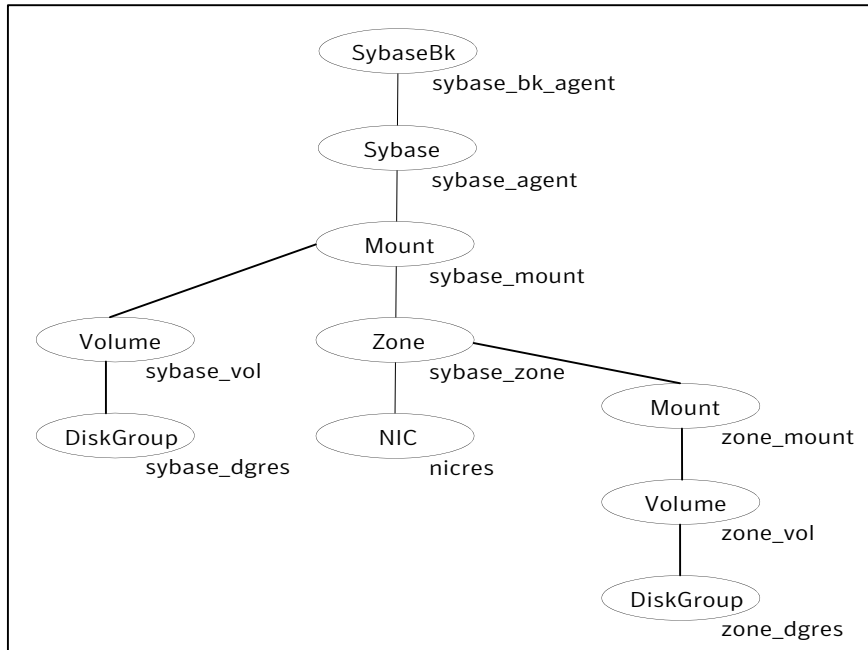
Figure B-2 Zone root on local disk



If the root file system of a zone is on a shared disk, VCS should mount the file system. Hence, separate DiskGroup and Volume resources are required for the zone.

Figure B-3 shows a configuration in which zone root is on the shared disk.

Figure B-3 Zone root on shared disk



Sample configuration for agent for Sybase on Solaris systems

The following sample depicts a basic configuration with a Sybase service group configured with one NIC, one database instance configured with detail monitoring, and one backup instance.

```
include "types.cf"
include "/etc/VRTSagents/ha/conf/Sybase/SybaseTypes.cf"

cluster vcscluster (
  UserNames = { admin = anoGniNkoJooMwoIn1 }
  Administrators = { admin }
  CounterInterval = 5
)
system system1 (
)

system system2 (
```

```
)

group Sybase_group (
    SystemList = { system1 = 0, system2 = 1 }
    AutoStartList = { system1, system2 }
)

DiskGroup dgres (
    DiskGroup = sybasedg
)

IP ipres (
    Device = le0
    Address = "16.9.1.9"
    NetMask = "255.255.0.0"
)

NIC nicres (
    Device = le0
    NetworkType = ether
)

Mount sybase_mount (
    MountPoint = "/opt/Sybase"
    BlockDevice = "/dev/vx/dsk/sybasedg/ase1103"
    FsckOpt = "-n"
    FSType = vxfs
    MountOpt = rw
)

Sybase sybase_agent (
    Server = SYBASE
    Owner = sybase
    Home = "/opt/Sybase"
    Version = sybase11
    SA = sa
    SApwd = sybase
    User = abcd
    UPword = xxxxxxxx
    Db = testdb1
    Table = testtab
    Monscript = "/opt/VRTSagents/ha/bin/Sybase/SqlTest.pl"
    Run_ServerFile = "/opt/sybase/RUN_SYBASE_SERVER"
```

```
        WaitForRecovery = 1
    )

    SybaseBk sybase_bk_agent (
        Server = SYBASE
        Owner = sybase
        Home = "/opt/Sybase"
        Version = sybase11
        Backupserver = SYB_BACKUP
        SA = sa
        SApwd = sybase
        Run_ServerFile = "/opt/sybase/RUN_SYBASE_SERVER_BS"
    )

    Volume sybasedg_vol (
        Volume = ase1103
        DiskGroup = dgres
    )

    sybase_agent requires sybase_mount
    sybase_agent requires ipres
    sybase_bk_agent requires sybase_agent
    sybase_mount requires sybasedg_vol
    ipres requires nicres
    sybasedg_vol requires dgres
```

Sample configuration for the Sybase agent in Solaris zones

A resource of type Zone is added to the sample configuration if the Sybase agent is configured to run in Solaris zones, irrespective of whether the root file system of the zone is on local or shared disks.

```
Zone ORA_zone (
    ZoneName = z-ora
)
```

Along with this resource addition, the service group configuration would also change to have the NIC and Mount resources to depend on the Zone resource.

Changes introduced in previous releases

This appendix includes the following topics:

- [Changes introduced in the previous release](#)

Changes introduced in the previous release

The enhancements in the previous releases of Veritas Cluster Server Agent for Sybase are as follows:

- The VCS agent binaries for Sybase are now part of VRTSvcsea package. This package also includes the VCS agent binaries for DB2 and Oracle.
- If you installed the VCS agent binaries using the installer program, the program updates the `main.cf` file to include the appropriate agent `types.cf` files.
- The Sybase agent supports the IPC cleanup feature.
- The agent supports a new attribute `WaitForRecovery`. If this attribute is enabled, during the online function, the agent waits till recovery has been completed and all databases that can be made online are brought online.
- The attributes `ContainerName` and `ContainerType` are replaced with resource type-level attribute `ContainerOpts`, and a service group-level attribute `ContainerInfo`.
- The agent supports a new action called `checkpoint_all`. Performs "checkpoint_all" for the Sybase dataserver by connecting to an isql session.

Index

Symbols

\$SYBASE 20

A

agent for Backup server

- functions 14
- resource type 53
- type definition 53

agent for SQL server

- attribute definitions 48
- functions 13
- resource type 47
- type definition 47

B

Backup server agent attributes

- AgentDirectory 54–55
- Backupserver 54
- home 54
- owner 54
- SA 54
- SAPswd 54
- server 53
- version 54

C

cluster manager 36

commands

- hagrp 28
- hagui 34

configuration

- typical setup 17

configuration wizard 36

configuring service groups 35

- about 35
- cluster manager (Java Console) 36
- command line 38
- prerequisites 35

D

database dbspaces 20

detail monitoring

- disabling 40
- enabling 41

H

hagrp command 28

hagui command 34

I

installing Sybase 22

M

monitoring

- basic 16
- detail 16

monitoring options

- Solaris zones 17

R

removing Sybase agent 29

S

sample configuration

- Solaris 60
- Solaris zones 62

service group

- viewing log 45

SQL server agent attributes

- AgentDirectory 52
- Db 50
- DetailMonitor 50
- home 49
- monscript 50
- owner 49
- Run_ServerFile 51
- SA 49
- SAPswd 49

SQL server agent attributes (*continued*)

- server 49
- table 50
- UPword 50
- user 50
- version 49
- WaitForRecovery 51

supported software 12

Sybase

- database dbspaces 20
- directory on shared disks 20
- installation directory 19
- installation prerequisites 19
- installing 22
- language settings 22
- long pathname limitations 20
- setting up for detail monitoring 22
- transparent TCP/IP failover 20

Sybase agent

- about 11
- agent functions 13
- configuring using cluster manager 36
- configuring using command line 38
- detail monitoring 40
- disabling 29
- installation prerequisites 25
- installing 26
- monitoring options 16
- removing 29
- supported software 12
- typical setup 17
- uninstalling 29
- upgrading 30

SybaseTypes.cf file

- importing 34

T

transparent TCP/IP failover 20

type definition 48

U

uninstalling Sybase agent 29