

# Veritas™ Cluster Server Database Agent for Oracle Configuration Guide

Windows Server 2003  
Windows Server 2008

5.1 Service Pack 2



# Veritas Cluster Server Database Agent for Oracle Configuration Guide

The software described in this book is furnished under a license agreement and may be used only in accordance with the terms of the agreement.

Product version: 5.1. Service Pack 2

Document version: 5.1.SP2.0

## Legal Notice

Copyright © 2010 Symantec Corporation. All rights reserved.

Symantec, the Symantec Logo, Veritas and Veritas Storage Foundation are trademarks or registered trademarks of Symantec Corporation or its affiliates in the U.S. and other countries. Other names may be trademarks of their respective owners.

This Symantec product may contain third party software for which Symantec is required to provide attribution to the third party ("Third Party Programs"). Some of the Third Party Programs are available under open source or free software licenses. The License Agreement accompanying the Software does not alter any rights or obligations you may have under those open source or free software licenses. Please see the Third Party Legal Notice file accompanying this Symantec product for more information on the Third Party Programs.

The product described in this document is distributed under licenses restricting its use, copying, distribution, and decompilation/reverse engineering. No part of this document may be reproduced in any form by any means without prior written authorization of Symantec Corporation and its licensors, if any.

THE DOCUMENTATION IS PROVIDED "AS IS" AND ALL EXPRESS OR IMPLIED CONDITIONS, REPRESENTATIONS AND WARRANTIES, INCLUDING ANY IMPLIED WARRANTY OF MERCHANTABILITY, FITNESS FOR A PARTICULAR PURPOSE OR NON-INFRINGEMENT, ARE DISCLAIMED, EXCEPT TO THE EXTENT THAT SUCH DISCLAIMERS ARE HELD TO BE LEGALLY INVALID. SYMANTEC CORPORATION SHALL NOT BE LIABLE FOR INCIDENTAL OR CONSEQUENTIAL DAMAGES IN CONNECTION WITH THE FURNISHING, PERFORMANCE, OR USE OF THIS DOCUMENTATION. THE INFORMATION CONTAINED IN THIS DOCUMENTATION IS SUBJECT TO CHANGE WITHOUT NOTICE.

The Licensed Software and Documentation are deemed to be commercial computer software as defined in FAR 12.212 and subject to restricted rights as defined in FAR Section 52.227-19 "Commercial Computer Software - Restricted Rights" and DFARS 227.7202, "Rights in Commercial Computer Software or Commercial Computer Software Documentation", as applicable, and any successor regulations. Any use, modification, reproduction release, performance, display or disclosure of the Licensed Software and Documentation by the U.S. Government shall be solely in accordance with the terms of this Agreement.

Symantec Corporation  
350 Ellis Street  
Mountain View, CA 94043  
<http://www.symantec.com>

# Technical Support

Symantec Technical Support maintains support centers globally. Technical Support's primary role is to respond to specific queries about product features and functionality. The Technical Support group also creates content for our online Knowledge Base. The Technical Support group works collaboratively with the other functional areas within Symantec to answer your questions in a timely fashion. For example, the Technical Support group works with Product Engineering and Symantec Security Response to provide alerting services and virus definition updates.

Symantec's support offerings include the following:

- A range of support options that give you the flexibility to select the right amount of service for any size organization
- Telephone and/or web-based support that provides rapid response and up-to-the-minute information
- Upgrade assurance that delivers automatic software upgrades protection
- Global support purchased on a regional business hours or 24 hours a day, 7 days a week basis
- Premium service offerings that include Account Management Services

For information about Symantec's support offerings, you can visit our web site at the following URL:

[www.symantec.com/business/support/index.jsp](http://www.symantec.com/business/support/index.jsp)

All support services will be delivered in accordance with your support agreement

and the then-current enterprise technical support policy.

## Contacting Technical Support

Customers with a current support agreement may access Technical Support information at the following URL:

[www.symantec.com/business/support/contact\\_techsupp\\_static.jsp](http://www.symantec.com/business/support/contact_techsupp_static.jsp)

Before contacting Technical Support, make sure you have satisfied the system requirements that are listed in your product documentation. Also, you should be at the computer on which the problem occurred, in case it is necessary to replicate the problem.

When you contact Technical Support, please have the following information available:

- Product release level
- Hardware information
- Available memory, disk space, and NIC information
- Operating system
- Version and patch level

- Network topology
- Router, gateway, and IP address information
- Problem description:
  - Error messages and log files
  - Troubleshooting that was performed before contacting Symantec
  - Recent software configuration changes and network changes

## Licensing and registration

If your Symantec product requires registration or a license key, access our technical support web page at the following URL:

[www.symantec.com/business/support/](http://www.symantec.com/business/support/)

## Customer service

Customer service information is available at the following URL:

[www.symantec.com/business/support/](http://www.symantec.com/business/support/)

Customer Service is available to assist with non-technical questions, such as the following types of issues:

- Questions regarding product licensing or serialization
- Product registration updates, such as address or name changes
- General product information (features, language availability, local dealers)
- Latest information about product updates and upgrades
- Information about upgrade assurance and support contracts
- Information about the Symantec Buying Programs
- Advice about Symantec's technical support options
- Nontechnical presales questions
- Issues that are related to CD-ROMs or manuals

## Support agreement resources

If you want to contact Symantec regarding an existing support agreement, please contact the support agreement administration team for your region as follows:

Asia-Pacific and Japan

[customercare\\_apac@symantec.com](mailto:customercare_apac@symantec.com)

Europe, Middle-East, and Africa

[semea@symantec.com](mailto:semea@symantec.com)

North America and Latin America

[supportsolutions@symantec.com](mailto:supportsolutions@symantec.com)

# Contents

Chapter 1	Introducing the VCS agent for Oracle	
	About the VCS database agent for Oracle .....	12
	Oracle agent .....	12
	Netlsnr agent .....	13
	Info entry point .....	13
	Action entry point .....	14
	How the agent makes Oracle highly available .....	15
	Typical Oracle configuration in a VCS cluster .....	16
Chapter 2	Installing the VCS agent for Oracle	
	About installing the VCS agent for Oracle .....	18
	Before installing the agent .....	18
	Installing the agent .....	18
	Configuring the cluster .....	19
	Configuring notification .....	30
Chapter 3	Installing and configuring Oracle	
	About installing Oracle .....	36
	Prerequisites for installing Oracle .....	36
	Installing Oracle .....	36
	About creating and configuring Oracle .....	38
	Prerequisites for creating and configuring Oracle .....	38
	Managing storage using SFW .....	39
	Creating disk groups .....	39
	Importing disk groups .....	41
	Creating volumes .....	41
	Mounting volumes .....	46
	Creating a temporary service group .....	47
	Configuring Oracle on the first node .....	48
	Bringing the temporary service group online .....	48
	Creating an Oracle database on shared disk .....	48
	Creating a listener service .....	50
	Configuring the listeners to use the virtual IP address .....	50
	Associating the database with the listener .....	50
	Updating the tnsnames.ora files .....	52

Configuring the PFILE (initSID.ora) .....	52
Configuring the SPFILE .....	53
Moving the initialization file to shared disks (Oracle 10g and 11g) .....	54
Setting the Oracle database parameters .....	55
Verifying the initialization file settings .....	56
Configuring the Oracle and listener services .....	57
Dismounting a volume .....	58
Configuring Oracle on failover nodes .....	59

## Chapter 4 Configuring the Oracle service group

About configuring the Oracle service group .....	62
Deleting the temporary service group .....	62
About configuring the Oracle service group using the wizard .....	63
Prerequisites for configuring the Oracle service group .....	63
Configuring the Oracle service group .....	65
Configuring dependent services .....	70
Verifying the Oracle service group configuration .....	71
Bringing the service group online .....	71
Taking the service group offline .....	72
Switching the service group .....	73
Disabling the service group .....	74

## Chapter 5 Administering the Oracle service group

About administering the Oracle service group .....	76
About modifying an Oracle service group .....	76
Prerequisites for modifying the Oracle service group .....	76
Modifying an Oracle service group .....	77
Deleting an Oracle service group .....	78
About configuring detail monitoring .....	79
Enabling detail monitoring .....	80
Disabling detail monitoring .....	81

## Chapter 6 Troubleshooting VCS agents

About troubleshooting the VCS agent for Oracle .....	84
Common problems with the VCS agent for Oracle .....	84
About VCS logging .....	86
Oracle agent error messages .....	88



Appendix A	Resource type definitions	
	About resource type definitions .....	92
	Oracle agent .....	92
	Type definition .....	92
	Attribute definitions .....	93
	Netlsnr agent .....	95
	Type definition .....	95
	Attribute definitions .....	96
Appendix B	Sample configuration	
	About sample configurations .....	98
	Resource dependency graph .....	98
	Sample configuration file .....	99
Appendix C	Oracle Enterprise Manager 10g Grid Control with VCS	
	About Oracle Enterprise Manager 10g with VCS .....	102
	Supported software .....	102
	Installing the VCS agent for Oracle .....	103
	Installing Oracle Enterprise Manager server .....	103
	Installing Oracle .....	103
	Installing the Oracle management agent .....	104
	Creating and configuring Oracle database and listener on the first node .....	104
	Configuring Oracle on failover nodes .....	105
	Configuring the Oracle service group .....	105
	Configuring a virtual network name .....	106
	Configuring the listener for virtual network name .....	106
	Configuring the database service for virtual network name .....	107
	Configuring an additional Oracle management agent .....	109
	Adding the database to the OEM 10g Grid Control .....	110
	Making the additional agent highly available .....	111
	Sample Configuration .....	112
Index		115



# Introducing the VCS agent for Oracle

This chapter contains the following topics:

- [“About the VCS database agent for Oracle”](#) on page 12
- [“Info entry point”](#) on page 13
- [“Action entry point”](#) on page 14
- [“How the agent makes Oracle highly available”](#) on page 15
- [“Typical Oracle configuration in a VCS cluster”](#) on page 16

## About the VCS database agent for Oracle

VCS database agents monitor specific resources within an enterprise application, determine the status of these resources, and start or stop them according to external events. The VCS database agent for Oracle provides high availability for Oracle in a VCS cluster.

The VCS database agent for Oracle monitors the Oracle database and listener services, brings them online, and takes them offline.

The package contains the following VCS agents:

- The Oracle agent, which monitors the Oracle database services.
- The Netlsnr agent, which monitors the listener services.

These agents work together to provide high availability for Oracle.

### Oracle agent

The Oracle agent monitors the database processes. The agent brings the Oracle database services online, monitors their status, and takes them offline.

Specific agent functions include the following:

Online	Starts the Oracle service.
Offline	Stops the Oracle service. The operation also stops all the services that are dependent on the Oracle service.
Monitor	Verifies the status of Oracle services. The agent provides two levels of application monitoring: basic and detail. <ul style="list-style-type: none"><li>■ In basic monitoring, the agent queries the Service Control Manager (SCM) to verify that Oracle services are continuously active.</li><li>■ In detail monitoring, the agent runs a SQL script to verify the status of the database. Detail monitoring is optional. It updates a temporary table in the Oracle database to verify the availability of the database instance. Refer to the information on configuring detail monitoring for an Oracle database. See <a href="#">“About configuring detail monitoring”</a> on page 79</li></ul>
Clean	Forcibly stops the Oracle database.
Info	Provides static and dynamic information about the state of the database. See <a href="#">“Info entry point”</a> on page 13
Action	Performs predefined actions on a resource. See <a href="#">“Action entry point”</a> on page 14

## Netlsnr agent

The Netlsnr agent monitors the listener process. The agent controls the listener for the database. The listener is a server process that listens to incoming client connection requests and manages traffic to the database.

The Netlsnr agent brings the listener services online, monitors their status, and takes them offline.

Specific agent functions include the following:

Online	Starts the listener service.
Offline	Stops the listener service.
Monitor	Queries the SCM for the status of the listener service.
Clean	Forcibly stops the listener service.

## Info entry point

The Info entry point provides static and dynamic information about the state of the database.

The entry point retrieves the following static information:

- Version
- Hostname
- Thread
- InstanceNo
- StartupTime
- InstanceRole
- InstanceName
- Parallel

The entry point retrieves the following dynamic information:

- InstanceStatus
- Logins
- DatabaseStatus
- ShutdownPending

You can add additional attributes by adding SQL statements to the following file:

```
%VCS_HOME%\bin\Oracle\scripts\info\db_info.sql
```

For example:

```
select 'static:HostName:'||host_name from v$instance;
select 'dynamic:ShutdownPending:'||shutdown_pending from
v$instance;
```

The format of the selected record must be as follows:

```
attribute_type:userkey_name:userkey_value
```

The variable *attribute\_type* can take the value *static* and/or *dynamic*.

## Action entry point

The Action entry point enables you to perform predefined actions on a resource.

To perform an action on a resource, type the following command:

```
C:\> hares -action <res> <token> [-actionargs <arg1> ...] [-sys
<system>] [-clus <cluster>]
```

Table 1-1 includes the actions that the agent supports.

**Table 1-1** Actions supported by Oracle agent

Token for Action	Description
DBRestrict	Changes the database session to enable the RESTRICTED mode.
DBUndoRestrict	Changes the database session to disable the RESTRICTED mode.
DBSuspend	Suspends a database.
DBResume	Resumes a suspended database.
DBQuiesce	Places the database into a quiesced state.  <b>Note:</b> You must set the <i>resource_manager_plan</i> parameter and restart the database before quiescing a database.
DBUnQuiesce	Restores the database from a quiesced state to a normal operation state.

You can also add custom actions for the agent.

For further information, refer to the *Veritas Cluster Server Agent Developer's Guide*.

## How the agent makes Oracle highly available

In the basic monitoring mode, the database agent for Oracle detects a failure if the database or a listener service is not running. In the detail monitoring mode, the agent detects failure if a preconfigured SQL script cannot execute or access the database or if the listener service is not running. The detail monitoring interval can be defined using the *IndepthMonitorCount* attribute.

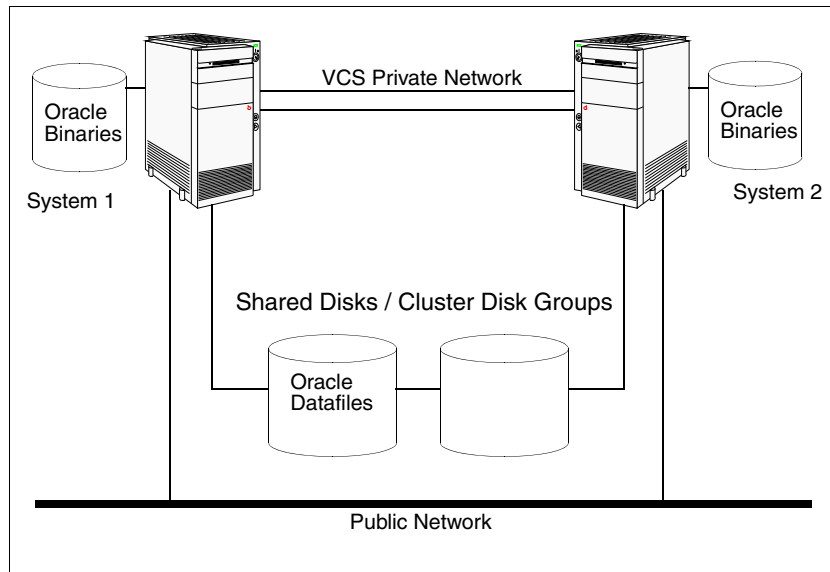
See [Appendix A, “Resource type definitions”](#) on page 91.

When the agent detects a failure, the Oracle service group switches to the next available system listed in the service group’s *SystemList* attribute. VCS starts the configured Oracle and listener services on the new system, thus ensuring high availability for the Oracle services and data.

## Typical Oracle configuration in a VCS cluster

In a typical configuration, VCS is configured in a two-node cluster (System 1 and System 2). Oracle is installed on both systems, and the data to be used by Oracle is installed on shared storage. The VCS database agent for Oracle is installed on both systems.

**Figure 1-1** Typical Oracle configuration in a VCS cluster





# Installing the VCS agent for Oracle

This chapter contains the following topics:

- [“About installing the VCS agent for Oracle”](#) on page 18
- [“Before installing the agent”](#) on page 18
- [“Installing the agent”](#) on page 18
- [“Configuring the cluster”](#) on page 19

## About installing the VCS agent for Oracle

This chapter describes how to install the VCS database agent for Oracle. Follow these instructions if you did not install the agent while installing Storage Foundation HA for Windows.

### Before installing the agent

- Verify that you have SFW HA installed on all cluster nodes.
- Verify that you have local Administrator privileges on the node where you are installing the agent.

### Installing the agent

Complete these steps to install the Oracle agent on a cluster node. Repeat these steps on all systems on which you wish to configure Oracle.

#### To install the agent

- 1 Start the installer for SFW HA. In the Add/Remove Programs window, click **Storage Foundation HA 5.1 SP2 for Windows (Server Components)** and click **Change**.
- 2 In the Storage Foundation 5.1 SP1 for Windows dialog box, choose the **Add or Remove** option and click **Next**.
- 3 In the SFW product options dialog box, click **Next**.
- 4 Check the **Veritas Cluster Server Database Agent for Oracle** check box and click **Next**.  
The disk space required for the installation is displayed toward the bottom of the screen. When you add or remove an option, the total space changes.
- 5 The installer validates the system for prerequisites. After the system is accepted, click **Next**.  
If a system is rejected, the Comments column displays the cause for rejecting the system. Highlight the system to view a detailed information about the failure in the Details box. Resolve the error, highlight the system from the list, and click **Validate Again**.
- 6 An informational message appears if you selected the DMP option. Review the information and click **OK** to continue.
- 7 Review the summary of your selections and click **Update** to start the installation.

- 8 The installer displays the status of installation.
- 9 After the installation is complete, review the installation report and click **Next**.
- 10 Click **Finish**.

## Configuring the cluster

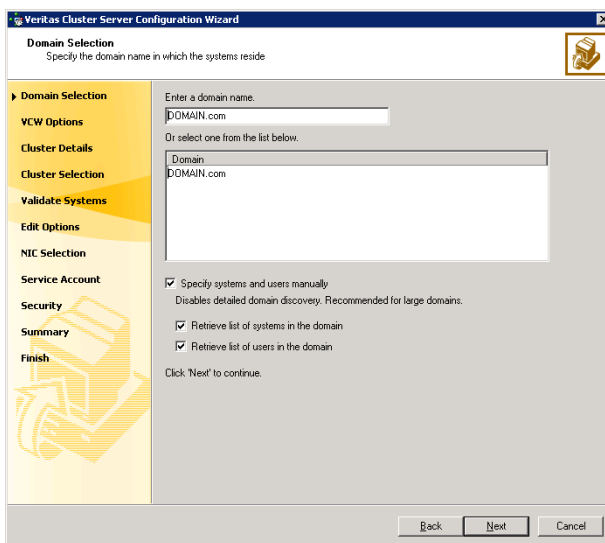
After installing Veritas Cluster Server using the product installer, set up the components required to run a cluster. The Veritas Cluster Server Cluster Configuration Wizard (VCW) sets up the cluster infrastructure, including LLT and GAB, and configures Symantec Product Authentication Service in the cluster. The wizard also configures the ClusterService group, which contains resources for the Cluster Management Console (Single Cluster Mode), also referred to as the Web Console, notification, and global clusters.

- If you plan to set up a disaster recovery environment, configure the wide-area connector process for global clusters.
- If you plan to create a new user account for the VCS Helper service, you must have Domain Administrator privileges or belong to the Domain Account Operators group.
- When configuring a user account for the VCS Helper service, make sure that the user account is a domain user. The VCS HAD, which runs in the context of the local system built-in account, uses the VCS Helper service user context to access the network. This account does not require domain admin privileges.

### To configure a VCS cluster

- 1 Start the VCS Cluster Configuration Wizard.  
Click **Start > All Programs > Symantec > Veritas Cluster Server > Configuration Tools > Cluster Configuration Wizard**.
- 2 Read the information on the Welcome panel and click **Next**.
- 3 On the Configuration Options panel, click **Cluster Operations** and click **Next**.

- 4 On the Domain Selection panel, select or type the name of the domain in which the cluster resides and select the discovery options.



Do one of the following:

- To discover information about all systems and users in the domain:
  - Clear the **Specify systems and users manually** check box.
  - Click **Next**.

Proceed to [step 8](#) on page 21.

- To specify systems and user names manually (recommended for large domains):
  - Check the **Specify systems and users manually** check box. Additionally, you may instruct the wizard to retrieve a list of systems and users in the domain by selecting appropriate check boxes.
  - Click **Next**.

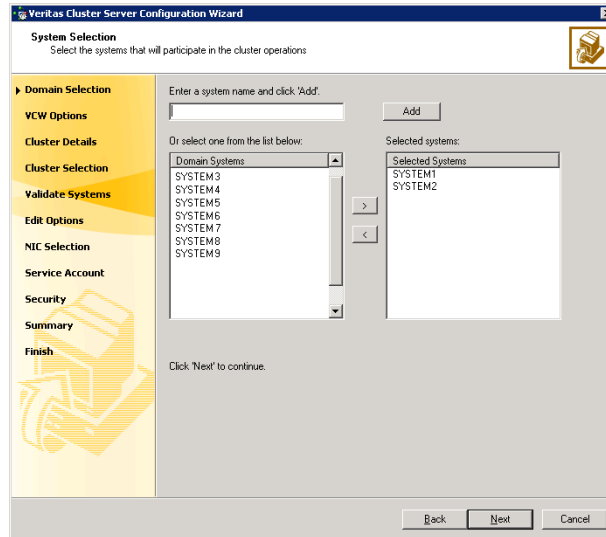
If you chose to retrieve the list of systems, proceed to [step 6](#) on page 21. Otherwise, proceed to the next step.

- 5 On the System Selection panel, type the name of each system to be added, click **Add**, and then click **Next**.

Do not specify systems that are part of another cluster.

Proceed to [step 8](#) on page 21.

- 6 On the System Selection panel, specify the systems for the cluster and then click **Next**. Do not select systems that are part of another cluster.



- Enter the name of the system and click **Add** to add the system to the Selected Systems list, or click to select the system in the Domain Systems list and then click the > (right-arrow) button.
- 7 The System Report panel displays the validation status, whether *Accepted* or *Rejected*, of all the systems you specified earlier. Review the status and then click **Next**.

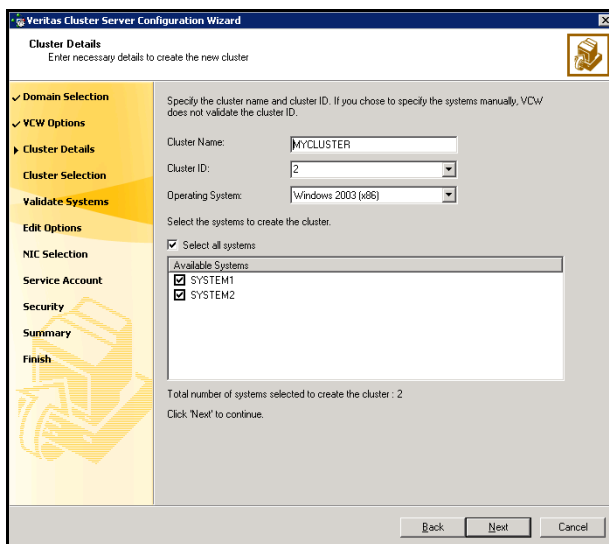
A system can be rejected for any of the following reasons:

- System is not pingable.
- WMI access is disabled on the system.
- Wizard is unable to retrieve the system architecture or operating system.
- VCS is either not installed on the system or the version of VCS is different from what is installed on the system on which you are running the wizard.

Click on a system name to see the validation details. If you wish to include a rejected system, rectify the error based on the reason for rejection and then run the wizard again.

- 8 On the Cluster Configuration Options panel, click **Create New Cluster** and click **Next**.

- 9 On the Cluster Details panel, specify the details for the cluster and then click **Next**.



**Cluster Name** Type a name for the new cluster. Symantec recommends a maximum length of 32 characters for the cluster name.

**Cluster ID** Select a cluster ID from the suggested cluster IDs in the drop-down list or type a unique ID for the cluster. The cluster ID can be any number from 0 to 255.

**Caution:** If you chose to specify systems and users manually in [step 4](#) or if you share a private network between more than one domain, make sure that the cluster ID is unique.

**Operating System** From the drop-down list select the operating system. The Available Systems box then displays all the systems that are running the specified operating system. All the systems in the cluster must have the same operating system and architecture. You cannot configure a 32-bit and a 64-bit system in the same cluster.

**Available Systems** Select the systems that you wish to configure in the cluster. Check the **Select all systems** check box to select all the systems simultaneously.

The wizard discovers the network interface cards (NICs) on the selected systems. For single-node clusters with the required number of NICs, the wizard prompts you to configure a private link heartbeat. In the dialog box, click **Yes** to configure a private link heartbeat.

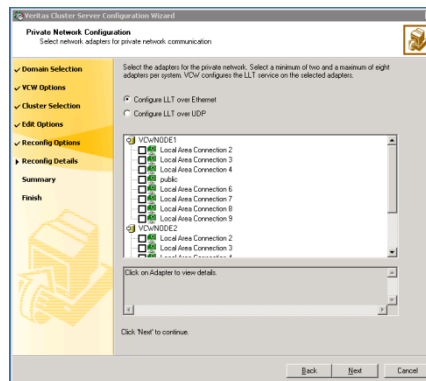
**10** The wizard validates the selected systems for cluster membership. After the systems are validated, click **Next**.

If a system is not validated, review the message associated with the failure and restart the wizard after rectifying the problem.

If you chose to configure a private link heartbeat in the earlier step, proceed to the next step. Otherwise, proceed to [step 12](#) on page 25.

**11** On the Private Network Configuration panel, configure the VCS private network and then click **Next**. You can configure the VCS private network either over the ethernet or over the User Datagram Protocol (UDP) layer. Do one of the following:

- To configure the VCS private network over the ethernet, complete the following steps:



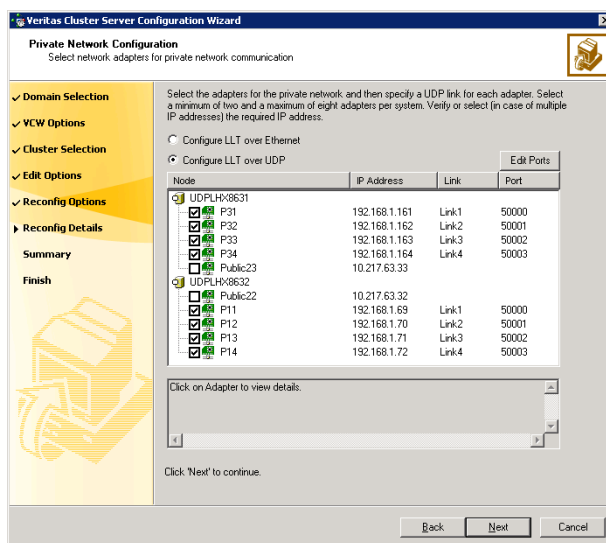
- Select the check boxes next to the two NICs to be assigned to the private network.

Symantec recommends reserving two NICs exclusively for the private network. However, you could lower the priority of one NIC and use the low-priority NIC for both public and private communication.

- If you have only two NICs on a selected system, it is recommended that you lower the priority of at least one NIC that will be used for private as well as public network communication.  
 To lower the priority of a NIC, right-click the NIC and select **Low Priority** from the pop-up menu.
- If your configuration contains teamed NICs, the wizard groups them as "NIC Group #N" where "N" is a number assigned to the teamed NIC. A teamed NIC is a logical NIC, formed by grouping several physical NICs together. All NICs in a team have an identical MAC address. Symantec recommends that you do not select teamed NICs for the private network.

The wizard configures the LLT service (over ethernet) on the selected network adapters.

- To configure the VCS private network over the User Datagram Protocol (UDP) layer, complete the following steps:



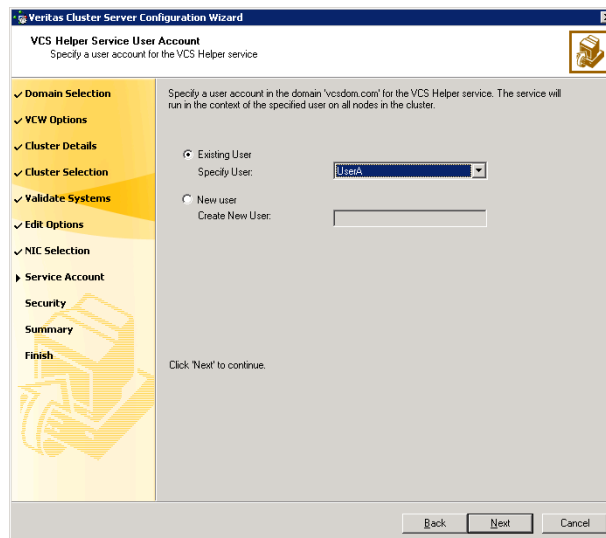
- Select **Configure LLT over UDP**.
- Select the check boxes next to the two NICs to be assigned to the private network. You can assign maximum eight network links. Symantec recommends reserving at least two NICs exclusively for the VCS private network.



- Specify a unique UDP port for each of the link. Click **Edit Ports** if you wish to edit the UDP ports for the links. You can use ports in the range 49152 to 65535. The default ports numbers are 50000 and 50001 respectively. Click **OK**.
- For each selected NIC, verify the displayed IP address. If a selected NIC has multiple IP addresses assigned, double-click the field and choose the desired IP address from the drop-down list. Each IP address can be in a different subnet.  
The IP address is used for the VCS private communication over the specified UDP port.
- For each selected NIC, double-click the respective field in the Link column and choose a link from the drop-down list. Specify a different link (Link1 or Link2) for each NIC. Each link is associated with a UDP port that you specified earlier.

The wizard configures the LLT service (over UDP) on the selected network adapters. The specified UDP ports will be used for the private network communication.

- 12 On the VCS Helper Service User Account panel, specify a domain user account for the VCS Helper service. The VCS high availability engine (HAD), which runs in the context of the local system built-in account, uses the VCS Helper service user context to access the network.  
This account does not require Domain Administrator privileges.



Specify a domain user as follows:

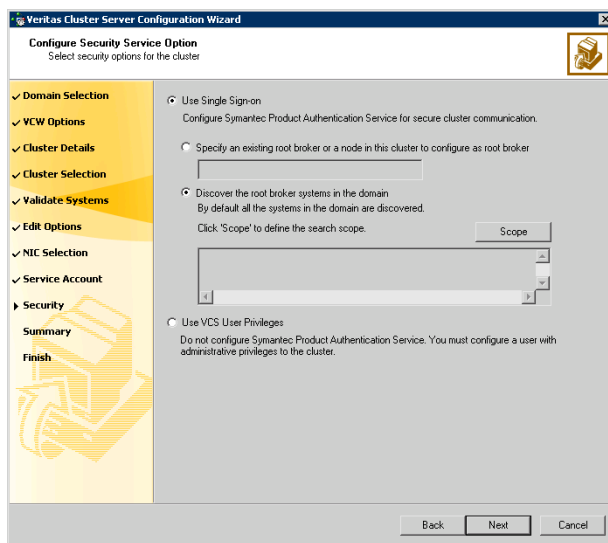
- To specify an existing user, do one of the following:

- Click **Existing user** and select a user name from the drop-down list
- If you chose not to retrieve the list of users in [step 4](#) on page 20, type the user name in the **Specify User** field, and then click **Next**.
- To specify a new user, click **New user** and type a valid user name in the Create New User field, and then click **Next**.  
 Do not append the domain name to the user name; do not type the user name as Domain\user or user@domain.
- In the Password dialog box, type the password for the specified user and click **OK**, and then click **Next**.

**13** On the Configure Security Service Option panel, specify the security options for the cluster and then click **Next**.

Do one of the following:

- To use the single sign-on feature, complete the following steps:



- Click **Use Single Sign-on**. In this mode, the Symantec Product Authentication Service is used to secure communication between cluster nodes and clients, including the Java console, by using digital certificates for authentication and SSL to encrypt communication over the public network. VCS uses SSL encryption and platform-based authentication. The VCS high availability engine (HAD) and Veritas Command Server run in secure mode. For more information about secure communications in a cluster, see the *Veritas Storage Foundation and High Availability Solutions Quick Start Guide for Symantec Product Authentication Service*.

- If you know the name of the system that will serve as the root broker, click **Specify an existing root broker or a node in this cluster to configure as root broker**, type the system name, and then click **Next**.

If you specify a cluster node, the wizard configures the node as the root broker and other nodes as authentication brokers.

Authentication brokers reside one level below the root broker and serve as intermediate registration and certification authorities. These brokers can authenticate clients, such as users or services, but cannot authenticate other brokers. Authentication brokers have certificates signed by the root.

If you specify a system outside of the cluster, make sure that the system is configured as a root broker; the wizard then configures all nodes in the cluster as authentication brokers.

- If you want to search the system that will serve as root broker, click **Discover the root broker systems in the domain** and click **Next**. The wizard will discover root brokers in the entire domain, by default.
- If you want to define a search criteria, click **Scope**. In the Scope of Discovery dialog box, click **Entire Domain** to search across the domain, or click **Specify Scope** and select the Organization Unit from the Available Organizational Units list, to limit the search to the specified organization unit. Use the Filter Criteria options to search systems matching a certain condition.

For example, to search for systems managed by a user *Administrator*, select **Managed by** from the first drop-down list, **is (exactly)** from the second drop-down list, type the user name **Administrator** in the adjacent field, click **Add**, and then click **OK**.

To search for all Windows Server 2003 systems, select **Operating System** from the first drop-down list, **is (exactly)** from the second drop-down list, type **\*2003\*** in the adjacent field, click **Add** and then click **OK**.

[Table 2-1](#) contains some more examples of search criteria.

**Table 2-1** Search criteria examples

1st drop-down list value	2nd drop-down list value	Adjacent field entry	Search result
Name	is (exactly)	*system	Displays all systems with names that end with <i>system</i> .
Name	is (exactly)	*vcsnode*	Displays all systems with names that contain <i>vcsnode</i> .

**Table 2-1** Search criteria examples

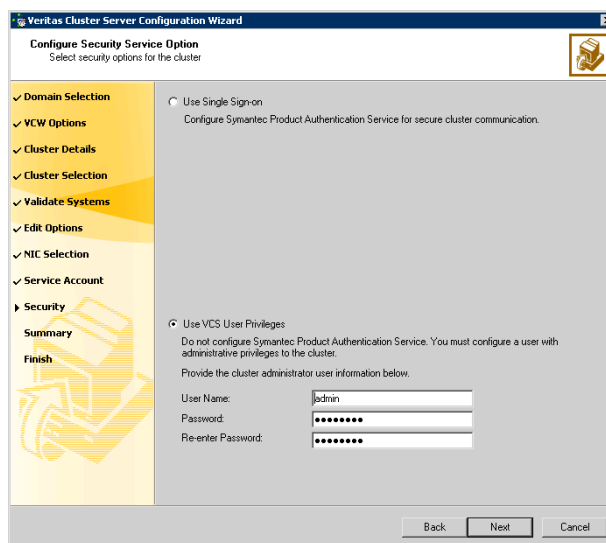
1st drop-down list value	2nd drop-down list value	Adjacent field entry	Search result
Operating System	is (exactly)	*2003*	Displays all Windows Server 2003 systems.
Operating System	is (exactly)	*Enterprise*	Displays all Windows Server Enterprise Edition systems.
Operating System Version	is (exactly)	5.*	Displays all systems whose operating system version is 5.x, where x could be 0, 1, 2, etc.

You can add multiple search criterion; the wizard will search for systems that match all the conditions specified.

- Click **Next**. The wizard discovers and displays a list of all the root brokers. Click to select a system that will serve as the root broker and then click **Next**.

If the root broker is a cluster node, the wizard configures the other cluster nodes as authentication brokers. If the root broker is outside the cluster, the wizard configures all the cluster nodes as authentication brokers.

- To use a VCS user privilege, complete the following steps:



- Click **Use VCS User Privileges** and then type a user name and password. The wizard configures this user as a VCS cluster administrator. In this mode, communication between cluster nodes and clients, including Java console, occurs using the encrypted VCS cluster administrator credentials. The wizard uses the VCS Encrypt utility to encrypt the user password. The default user name for the VCS administrator is *admin* and the password is *password*. Both are case-sensitive. You can accept the default user name and password for the VCS administrator account or type a new name and password. Symantec recommends that you specify a new user name and password.
  - Click **Next**.
- 14 Review the summary information on the Summary panel, and click **Configure**.

The wizard configures the VCS private network. If the selected systems have LLT or GAB configuration files, the wizard displays an informational dialog box before overwriting the files. In the dialog box, click **OK** to overwrite the files. Otherwise, click **Cancel**, exit the wizard, move the existing files to a different location, and rerun the wizard.

The wizard starts running commands to configure VCS services. If an operation fails, click **View configuration log file** to see the log.

- 15 On the Completing Cluster Configuration panel, click **Next** to configure the ClusterService service group; this group is required to set up components for notification, and for global clusters.

To configure the ClusterService group later, click **Finish**.

At this stage, the wizard has collected the information required to set up the cluster configuration. After the wizard completes its operations, with or without the ClusterService group components, the cluster is ready to host application service groups. The wizard also starts the VCS engine (HAD) and the Veritas Command Server at this stage.

---

**Note:** After configuring the cluster you must not change the names of the nodes that are part of the cluster. If you wish to change a node name, run this wizard to remove the node from the cluster, rename the system, and then run this wizard again to add that system to the cluster.

---

Refer to the *Veritas Cluster Server Administrator's Guide* for complete details on the Notification resource.

The GCO Option applies only if you are configuring a Disaster Recovery environment and are not using the Disaster Recovery wizard. The Disaster Recovery chapters discuss how to use the Disaster Recovery wizard to configure the GCO option.

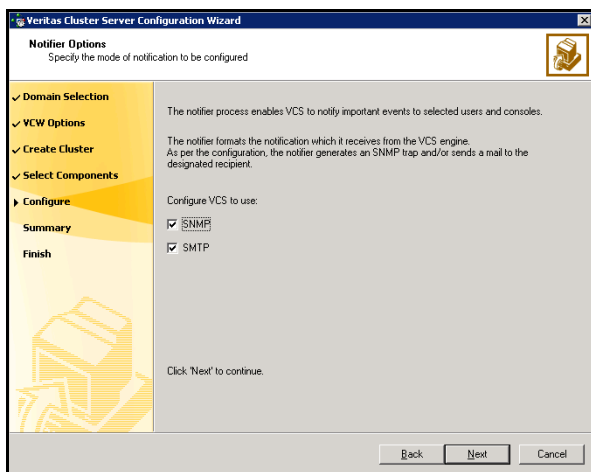
- 16 On the Cluster Service Components panel, select the components to be configured in the ClusterService service group and click **Next**.
  - Check the **Notifier Option** checkbox to configure notification of important events to designated recipients.  
See “[Configuring notification](#)” on page 30.

## Configuring notification

This section describes steps to configure notification.

### To configure notification

- 1 On the Notifier Options panel, specify the mode of notification to be configured and click **Next**.



You can configure VCS to generate SNMP (V2) traps on a designated server and send emails to designated recipients in response to certain events.

- 2 If you chose to configure SNMP, specify information about the SNMP console and click **Next**.

Enter name or IP of the SNMP console and severity level for each

SNMP Console	Severity
snmposev	Information
snmpsev1	SevereError

Click on "+" button to add more consoles.  
Click "-" to remove a console.

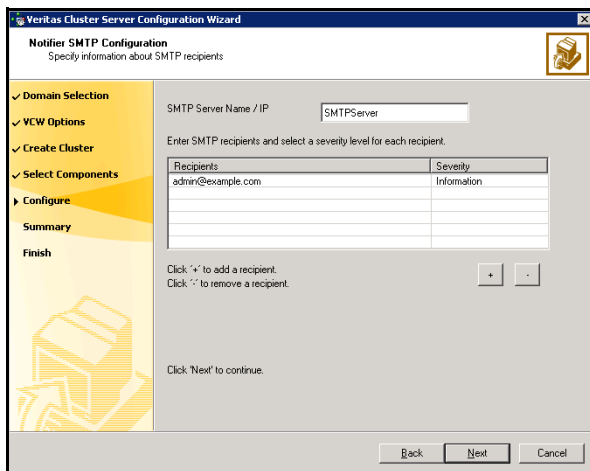
Enter SNMP Trap Port:

Note: SNMP console must be MIB 2.0 compliant

Click 'Next' to continue.

- Click a field in the SNMP Console column and type the name or IP address of the console. The specified SNMP console must be MIB 2.0 compliant.
- Click the corresponding field in the Severity column and select a severity level for the console.
- Click '+' to add a field; click '-' to remove a field.
- Enter an SNMP trap port. The default value is "162".

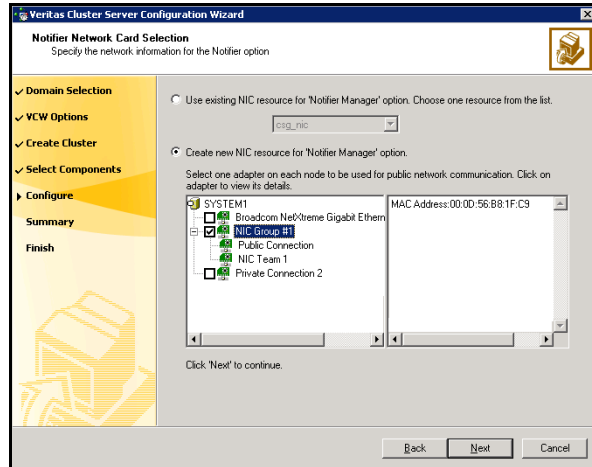
- 3 If you chose to configure SMTP, specify information about SMTP recipients and click **Next**.



- Type the name of the SMTP server.
- Click a field in the Recipients column and enter a recipient for notification. Enter recipients as admin@example.com.
- Click the corresponding field in the Severity column and select a severity level for the recipient. VCS sends messages of an equal or higher severity to the recipient.
- Click + to add fields; click - to remove a field.



- 4 On the Notifier Network Card Selection panel, specify the network information and click **Next**.



- If the cluster has a ClusterService service group configured, you can use the NIC resource configured in the service group or configure a new NIC resource for notification.
  - If you choose to configure a new NIC resource, select a network adapter for each node in the cluster. The wizard lists the public network adapters along with the adapters that were assigned a low priority.
- 5 Review the summary information and choose whether you want to bring the notification resources online when VCS is started.
  - 6 Click **Configure**.
  - 7 Click **Finish** to exit the wizard.

After the agent is successfully installed in the cluster, proceed to installing and configuring Oracle in the cluster.

See [Chapter 3, “Installing and configuring Oracle”](#) on page 35.



# Installing and configuring Oracle

This chapter contains the following topics:

- [“About installing Oracle”](#) on page 36
- [“Prerequisites for installing Oracle”](#) on page 36
- [“Installing Oracle”](#) on page 36
- [“About creating and configuring Oracle”](#) on page 38
- [“Prerequisites for creating and configuring Oracle”](#) on page 38
- [“Managing storage using SFW”](#) on page 39
- [“Creating a temporary service group”](#) on page 47
- [“Configuring Oracle on the first node”](#) on page 48
- [“Configuring Oracle on failover nodes”](#) on page 59

## About installing Oracle

The strategy for installing Oracle in a VCS cluster is aimed at ensuring that Oracle installation on all the nodes in the cluster is uniform. This involves installing the Oracle binaries locally on each system.

You can perform this installation simultaneously on cluster nodes.

See the Oracle documentation for specific instructions on how to install Oracle.

## Prerequisites for installing Oracle

Note the following prerequisites before you begin to install Oracle:

- Verify that SFW HA is installed on all nodes in the cluster. Refer to the *Veritas Storage Foundation and High Availability Solutions, Installation and Upgrade Guide* for instructions.
- Verify you have run the VCS Cluster Configuration Wizard (VCW) to configure VCS on all nodes. See “[Configuring the cluster](#)” on page 19.
- Log on as Domain Administrator to install Oracle binaries.

## Installing Oracle

Complete these steps to install Oracle. The installer screens and options may vary slightly for different versions of Oracle.

Refer to the Oracle documentation for detailed installation steps.

While installing Oracle, note the following:

- Install Oracle in software only mode. Do not configure the Oracle database while installing Oracle on additional cluster nodes.
- Install the Oracle software program files on a local disk. To ensure application installations are identical, the values you specify while installing Oracle must be the same on all nodes. For example, the database name, file locations, database credentials must be the same on all cluster nodes.
- The Oracle Home name and path should be the same on all the cluster nodes.
- Do not create the Oracle Starter database.

### To install Oracle

- 1 Insert the Oracle software disc in a drive connected to the node and run the Setup program.
- 2 Complete the following instructions depending on the version of Oracle:
  - For Oracle 9i**
    - From the browser menu, click **Install/Deinstall Products**.
    - Read the information in the Welcome panel and click **Next**.
    - In the File Locations dialog box, type or select a name and a path on the local disk, for the Oracle Home, and click **Next**.  
This will install the Oracle binaries on the local disk. You must use the same Oracle Home name and path on all nodes.
    - In the Available Products panel, select the **Oracle 9i Database option** and click **Next**.
    - In the Installation Types panel, select the **Enterprise Edition** option and click **Next**.
    - In the Database Configuration panel, select the **Customized** or **Software Only** option and click **Next**. Select the **Customized** option if you want to migrate earlier databases to Oracle 9i.
    - If you chose the **Customized** option, then on the Database Identification panel, select or type a unique name and SID for the global database and click **Next**.
  - For Oracle 10g and 11g**
    - Install the Oracle 10g or 11g database.
    - Choose the **Basic** or **Advanced** installation type.  
For Basic installation:
      - In the **Oracle Home Location** box, type or select a name and a path on the local disk for the Oracle Home. This installs the Oracle binaries on the local disk.
      - Select **Enterprise Edition**.
      - Clear the **Create Starter Database** check box and click **Next**.For Advanced installation:
      - Select the destination directory for the Oracle installation and click **Next**.
      - Select **Enterprise Edition** and click **Next**.
      - Select **Do not create a starter database**.
- 3 Follow the wizard instructions, select options as per your configuration, and complete the installation.

## About creating and configuring Oracle

Configuring the database involves setting parameters in Oracle configuration files. It also involves,

- setting the same virtual IP address for all the databases
- configuring the databases to use the OS authentication model of Oracle
- creating the service groups in VCS cluster

Note that you must first configure the databases on the first cluster node and then subsequently configure them on the failover nodes.

## Prerequisites for creating and configuring Oracle

Note the following prerequisites before you begin to configure Oracle under VCS control:

- Create the required volumes on the shared cluster disk groups before you begin to configure Oracle under VCS control.  
See [“Managing storage using SFW”](#) on page 39.

---

**Note:** If your storage devices are SCSI-3 compliant, and you wish to use SCSI-3 Persistent Group Reservations (PGR), you must enable SCSI-3 support using the Veritas Enterprise Administrator (VEA > Control Panel > Storage Agent > System Settings > SCSI Support). See the Veritas Storage Foundation Administrator’s Guide for more information.

---

- Verify that the volumes created for the Oracle database, control files, log files, bdump, cdump, udump, flash recovery area, and archive location are mounted on the node where you run the wizard.  
See [“Mounting volumes”](#) on page 46.
- Create a temporary service group to configure an IP resource.  
See [“Creating a temporary service group”](#) on page 47.

## Managing storage using SFW

Veritas Storage Foundation for Windows (SFW) manages data by creating disk groups from physical disks. These disk groups are further divided into volumes, which can be mounted from the cluster nodes.

Create volumes on the shared disks for the following:

- database files
- control files
- log files, including the redo logs, archive logs, background\_dump\_dest (bdump), core\_dump\_dest (cdump), and user\_dump\_dest (udump) files
- Flash Recovery Area and the Archiving location

The Oracle background\_dump\_dest (bdump), core\_dump\_dest (cdump), and user\_dump\_dest (udump) files must be on the same volume as that of the redo logs.

---

**Note:** If your storage devices are SCSI-3 compliant, and you wish to use SCSI-3 Persistent Group Reservations (PGR), you must enable SCSI-3 support using the Veritas Enterprise Administrator (VEA > Control Panel > Storage Agent > System Settings > SCSI Support). See the Veritas Storage Foundation Administrator's Guide for more information.

---

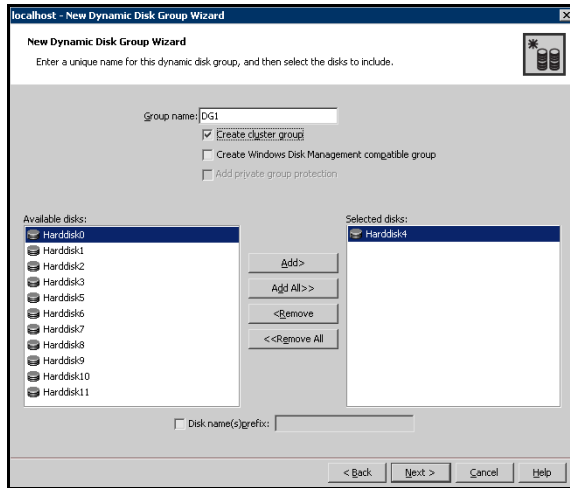
## Creating disk groups

The following steps describe how to create disk groups.

### To create a disk group

- 1 Open the VEA console by clicking **Start > All Programs > Symantec > Veritas Storage Foundation > Veritas Enterprise Administrator** and select a profile if prompted.
- 2 Click **Connect to a Host or Domain**.
- 3 In the Connect dialog box, select the host name from the drop-down menu and click **Connect**.  
To connect to the local system, select **localhost**. Provide the user name, password, and domain if prompted.
- 4 To start the New Dynamic Disk Group Wizard, expand the tree view under the host node, right click the **Disk Groups** icon, and select **New Dynamic Disk Group** from the context menu.
- 5 In the Welcome screen of the New Dynamic Disk Group Wizard, click **Next**.

6 Specify the information related to the disk group and click **Next**.



Group name	Type a unique name for the disk group.
Create cluster group	Check this option.
Available disks	Select the disks to include in the disk group and <b>Add</b> . The selected disks appear in the Selected disks box. Optionally, check the <b>Disk names prefix</b> check box and enter a disk name prefix to give the disks in the disk group a specific identifier. For example, entering TestGroup as the prefix for a disk group that contains three disks creates TestGroup1, TestGroup2, and TestGroup3 as internal names for the disks in the disk group.

- 7 Click **Next** to accept the confirmation screen with the selected disks.
- 8 Click **Finish** to create the new disk group.  
The newly created disk group is imported on the system where you ran the wizard.



## Importing disk groups

Import the disk groups, if they are not imported already.

### To import the disk groups

- 1 From the VEA Console, right-click a disk name in the dynamic group or the dynamic group name in the **General** tab or tree view.
- 2 Click **Import Dynamic Disk Group** from the menu.
- 3 In the Import Dynamic Disk Group dialog box, click **OK**.

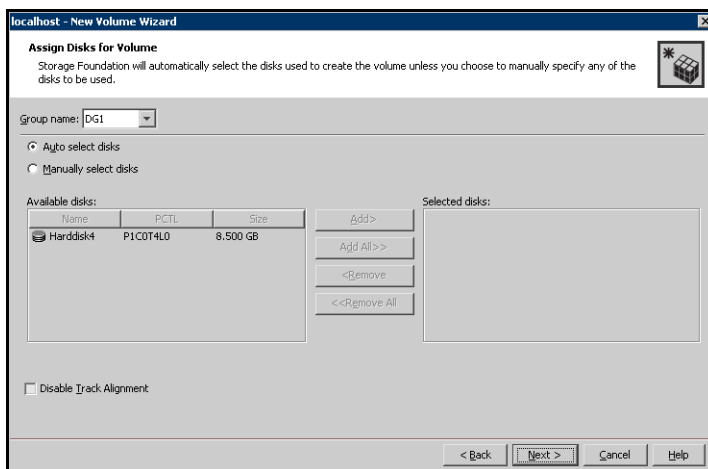
## Creating volumes

Repeat the following steps for all the volumes to be created.

### To create dynamic volumes

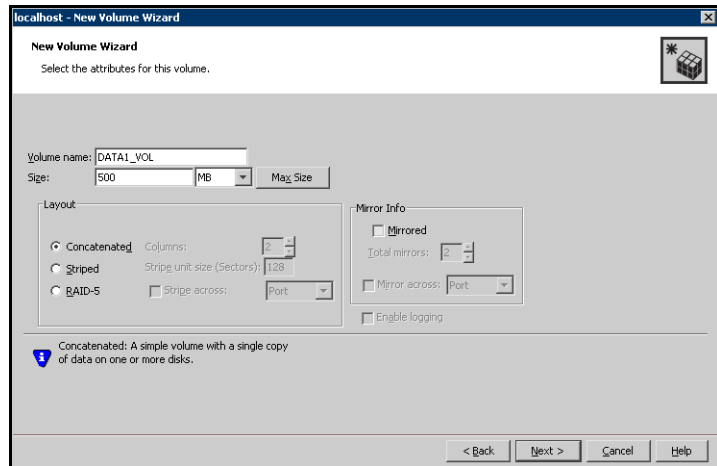
- 1 If the VEA console is not already open, click **Start > All Programs > Symantec > Veritas Storage Foundation > Veritas Enterprise Administrator** and select a profile if prompted.
- 2 Click **Connect to a Host or Domain**.
- 3 In the Connect dialog box select the host name from the pull-down menu and click **Connect**.  
To connect to the local system, select **localhost**. Provide the user name, password, and domain if prompted.
- 4 To start the New Volume Wizard, expand the tree view under the host node to display all the disk groups. Right click a disk group and select **New Volume** from the context menu.
- 5 At the New Volume Wizard opening screen, click **Next**.

- 6 In the Assign Disks for Volume panel, assign disks to the volume, and then click **Next**. Make sure the appropriate disk group name appears in the Group name drop-down list.



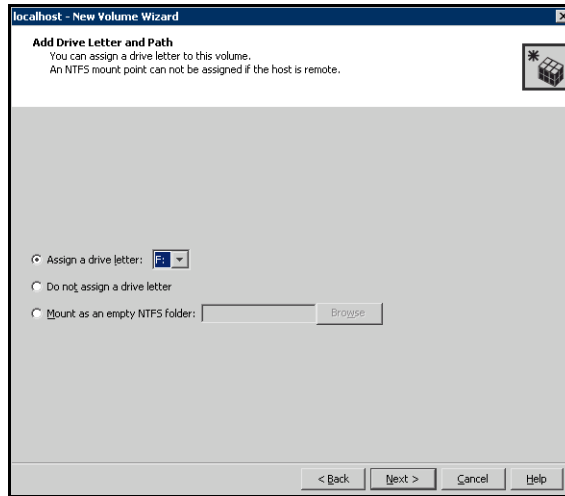
- |                         |  |
|-------------------------|--|
| Group name              | From the drop-down list, select the disk group on which to create a volume.  |
| Auto select disks       | Automatic disk selection is the default setting.   |
| Manually select disks   | To manually select the disks, click this option and use the <b>Add</b> and <b>Remove</b> buttons to move the appropriate disks to the Selected disks list. Manual selection of disks is recommended.   |
| Disable Track Alignment | You may check Disable Track Alignment check box to disable track alignment for the volume. Disabling Track Alignment means that the volume does not store blocks of data in alignment with the boundaries of the physical track of the disk. |

- In the New Volume Wizard panel, specify the attributes for the volume and click **Next**.



Volume name	Type a name for the volume. The name is limited to 18 ASCII characters and cannot contain spaces or forward or backward slashes.
Size	Specify the size for the volume. If you click on the <b>Max Size</b> button, a size appears in the Size box that represents the maximum possible volume size for that layout in the dynamic disk group.
Layout	Allow the default Concatenated layout or specify the layout preferences for the volume, if applicable. To select mirrored striped, click both the <b>Mirrored</b> checkbox and the <b>Striped</b> radio button. If you are creating a striped volume, the Columns and Stripe unit size boxes need to have entries. Defaults are provided.
Mirror Info	Specify the mirror information for the volume, if applicable.

- 8 In the Add Drive Letter and Path panel, assign a drive letter or mount point to the volume and then click **Next**.



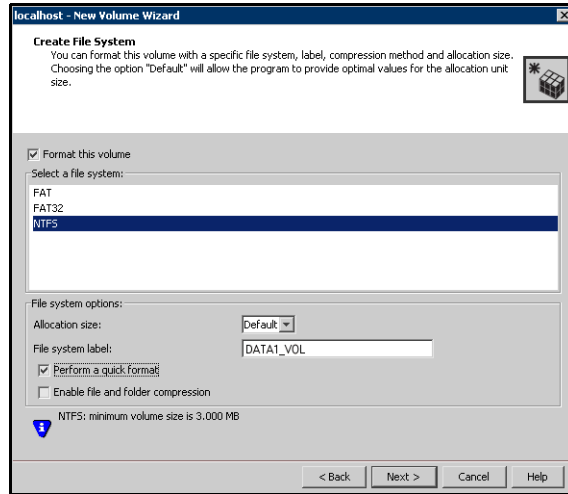
Assign a drive letter

To assign a drive letter, select this option, and from the drop-down list select the drive letter to be assigned. Verify the availability of the drive letter on all the systems before assigning it. You must use the same drive letter or mount point on all the systems in the cluster.

Mount as an empty NTFS folder

To mount the volume as a folder, select this option, and click **Browse** to locate an empty folder on the shared disk.

- In the Create File System panel, create a file system on the new volume and then click **Next**.



Format this volume	Check this option, if not already checked.
Select a file system	Click <b>NTFS</b> .
Allocation size	From the drop-down list select an allocation size or accept the default.
File system label	Type a label for the volume. This is optional. SFW makes the volume name the file system label.
Perform a quick format	Select <b>Perform a quick format</b> if you want to save time.
Enable file or folder compression	Select this option to save disk space. Note that compression consumes system resources and performs encryption and decryption, which may result in reduced system performance.

- In the Summary panel, review the information and click **Finish** to create the new volume.

## Mounting volumes

Mounting a volume involves importing the disk group and assigning a drive letter or the folder path. Repeat these steps for all volumes to be mounted.

### To mount a volume

- 1 Click **Start > All Programs > Symantec > Veritas Storage Foundation > Veritas Enterprise Administrator** to open the Veritas Enterprise Administrator.
- 2 If the disk group is not imported, import it. From the VEA console's tree view, right-click the disk group and select **Import Dynamic Group** from the context menu.
- 3 Right-click the volume, and then click **File System > Change Drive Letter and Path**.
- 4 In the Drive Letter and Paths dialog box, click **Add**.
- 5 In the Assign Drive Letter panel, choose one of the following options depending on whether you want to assign a drive letter to the volume or mount it as a folder, and click **OK**.
  - To assign a drive letter  
Select **Assign a Drive Letter** and select a drive letter from the drop-down list.
  - To mount the volume as a folder  
Select **Mount as an empty NTFS folder** and click **Browse** to locate an empty folder on the shared disk.

You must ensure that you use the same disk on all the nodes. To identify a disk, run `vmgetdrive -details` from the command prompt on one node. Note the disk number and signature of the disk. Rerun the command on the second node and identify the disk that has the same signature as the one on the first node. Once you have identified two identical disks, assign the same drive letter to the volumes on each disk.

## Creating a temporary service group

Create a temporary service group with an IP resource. Assign a virtual IP address to the IP resource. All the configured databases and listeners must use the same virtual IP address.

### To create a temporary service group

- 1 From the Cluster Manager (Java Console), click **Edit > Add > Service Group**, and complete the following in the Add Service Group dialog box:
  - Type a name for the service group in the Service Group name field.
  - From the Available Systems box, select the nodes on which you want to configure Oracle (Use Ctrl click to select multiple nodes) and click the right arrow to move the systems to the Systems for Service Group box.
  - Click **OK**.
- 2 To add an IP resource to the temporary service group, right-click the service group name, click **Add Resource**, and complete the following in the Add Resource dialog box:
  - Type a name for the IP resource in the Resource name field.
  - Select **IP** from the Resource Type drop-down list.
  - Specify appropriate values for the **Address**, **SubNetMask**, and **MACAddress** attributes. For the MACAddress attribute, select the **Per System** option, and then choose the current node name from the drop-down list. The MACAddress attribute is always local; it is different for each system. You must specify a MACAddress for each node in the service group.
  - Check the **Enabled** check box and then click **OK**.

## Configuring Oracle on the first node

Perform the following tasks on the first node in the cluster. This involves installing the control files, data files, log files, bdump, cdump, udump files, the flash recovery area and the archive location, on the shared storage.

### Bringing the temporary service group online

Bring the temporary service group online on the node on which you are installing Oracle first. The IP address specified for the IP resource in the service group is used by all the configured databases and listeners.

#### To bring the temporary service group online

- 1 From the Cluster Manager (Java Console), right-click the temporary service group name, click **Online** and then select the current node from the list. This is the cluster node on which you are installing Oracle first.
- 2 Click **Yes** on the prompt that confirms whether you wish to bring the service group online.

### Creating an Oracle database on shared disk

Create an Oracle database on the shared disk using the Oracle Database Configuration Assistant. You need to create the database only once, from the node on which you installed Oracle first. You do not need to repeat these steps on the remaining cluster nodes.

#### To create a Oracle database on shared disks

- 1 Start the Database Configuration Assistant (**Start > All Programs > Oracle-Oracle\_Home > Configuration and Migration Tools > Database Configuration Assistant**). This launches the database installer.
- 2 In the Welcome panel, click **Next**.
- 3 In the Operation panel, select **Create a databse** and click **Next**.
- 4 Complete the following instructions depending on the Oracle version.  
**For Oracle 9i**
  - In the Database Templates panel, select **New Database** and click **Next**.
  - In the Database Identification panel, specify the **Global Database Name** and **SID** in the respective fields.
  - Install the initialization file on the shared disk. In the Initialization Parameters dialog box, click the **File Locations** tab.



In the **Initialization Parameter Filename** box, enter a path on the shared disk for the PFILE. If you create an SPFILE, in the **Server Parameters Filename** field, enter a path on the shared disk for the SPFILE.

#### For Oracle 10g

- In the Database Templates panel, select the desired database template and click **Next**.
  - In the Database Identification panel, specify the **Global Database Name** and **SID** in the respective fields and then click **Next**.
  - Choose to create the database on the shared disk.
- 5 Follow the wizard instructions and select other options as per your desired database configuration. Install the control files, data files, log files, bdump, cdump, and udump files on the shared disk.
- On the Recovery Configuration panel, specify the Flash Recovery Area and the Archiving location on the shared disk.
  - On the Initialization Parameters panel, click All Initialization Parameters and then specify the path for the background\_dump\_dest (bdump), core\_dump\_dest (cdump), and user\_dump\_dest (udump) files.
  - In the Database Storage panel, specify the locations of control files, data files, and redo log files. In the left pane, expand the **Storage** folder.
    - Enter a path on the shared disk for each control file.  
To do so, click **Controlfile** and click the **General** tab in the right pane. In the **File Directory** field, enter a path on the shared disk.
    - Enter a path on the shared disk for each data file.  
To do so, expand the **Datafiles** folder in the left pane. Select a data file, and click the **General** tab in the right pane. In the **File Directory** field, enter a path on the shared disk.
    - Enter a path on the shared disk for each redo log file.  
To do so, expand the **Redo Log Groups** folder in the left pane. Select a redo log group and click the **General** tab in the right pane. In the **File Directory** field, enter a path on the shared disk.  
The path for the redo log files must be the same as that of the bdump, cdump, and udump files, specified earlier.
    - Click **Next**.
- 6 Select the **Create database** and the **Generate Database Creation Scripts** options and click **Finish**.
- 7 Follow the wizard instructions and complete the steps for creating an Oracle database on the shared disk.

## Creating a listener service

Create a listener service using the Net Configuration Assistant. Make a note of the listener name and the port number you assign to the listener; these details are required in subsequent configuration tasks.

Refer to the Oracle documentation for instructions.

## Configuring the listeners to use the virtual IP address

In the file listener.ora file, change the host name to the virtual IP address that you created on the node earlier.

This is the same IP address that you specified for the IP resource in the temporary service group.

### To configure listeners to use the virtual IP address

- 1 From the Oracle Home, open the file listener.ora.  
Typically, the default location of the file listener.ora is  
`<ORACLE_HOME>\NETWORK\ADMIN\`
- 2 Edit the entry in listener.ora as follows:  
Replace  
`HOST=machine_name`  
with  
`HOST=virtual_IP_address`
- 3 Save and close the listener.ora file.
- 4 Restart the listener service from the Services snap-in.

## Associating the database with the listener

Use these instructions to associate all the databases with the listeners. Before making these changes make a backup copy of the SPFILE.

Ensure that the initialization parameter file contains the following entries:

- SERVICE\_NAMES (the name of the database service)
- INSTANCE\_NAME (the name of the database instance)

These parameters are created during installation or database creation.

### To associate the database with the listener

- 1 Define the parameter listener\_alias. If your Oracle configuration uses the file tnsnames.ora, edit the file as instructed below.

---

**Note:** In case the `tnsnames.ora` file does not exist, you must create it and then add the required information.

---

The default location of `tnsnames.ora` is

```
<ORACLE_HOME>\NETWORK\ADMIN.
```

Add the following to `tnsnames.ora` file:

```
<listener_alias>=  
(DESCRIPTION =  
(ADDRESS=(Protocol=TCP)(HOST=virtual_IP_address)(Port=port))  
)
```

Here, virtual IP address is the IP address you assigned to the IP resource in the temporary service group and port is the port number you specified while creating the listener. You can check the `listener.ora` file to find out the port number used. The default value is 1521.

**2** Configure a new attribute `listener_alias`. Run the following SQL commands.

■ Set the SID name.

Type the following on the command prompt:

```
C:\>set ORACLE_SID=<SID NAME>
```

■ Log on to the Oracle database as an administrator.

Type the following on the command prompt:

```
C:\>sqlplus "/nolog"  
C:\>sqlplus "/as sysdba"
```

■ Configure `listener_alias`.

Type the following on the command prompt:

```
SQL> ALTER SYSTEM SET  
LOCAL_LISTENER='<listener_alias>' scope=spfile;
```

■ If you are using a pfile, add the following entry to the initialization parameter file (pfile):

```
LOCAL_LISTENER = <listener_alias>
```

The `listener_alias` value should be unique; it should be different from the listener name.

**3** Stop and restart the database.

The `listener_alias` parameter gets appended by the default domain name specified in the file `sqlnet.ora`.

## Updating the tnsnames.ora files

If your configuration has a tnsnames.ora file, edit the file as instructed below. For all the databases that you wish to make highly available using VCS, change the respective host names entries for all the TCP protocol address databases to the virtual IP address. The virtual IP address is the one you specified for the IP resource of the temporary service group that you created earlier.

### To update the tnsnames.ora file

- 1 From the Oracle Home, open the file tnsnames.ora.  
Typically, the default location of the file tnsnames.ora is  
`<ORACLE_HOME>\NETWORK\ADMIN\.`
- 2 Edit the entry in tnsnames.ora as follows:  
Replace  
`HOST=machine_name`  
with  
`HOST=virtual_IP_address`
- 3 Save and close the tnsnames.ora file.

## Configuring the PFILE (initSID.ora)

If you use a PFILE, configure the same to use the virtual IP address for the service group and set the database to use the OS authentication model of Oracle.

- 1 Edit the dispatchers parameter by adding or editing the HOST parameter. If the ADDRESS tag does not appear, add it. The edited dispatchers parameter should look like:  

```
dispatchers = '(ADDRESS=(Protocol=TCP)
(HOST=virtual_IP_address) (other entries))'
```

The variable *virtual\_IP\_address* represents the virtual IP address that you created. For example:

```
dispatchers = '(ADDRESS=(Protocol=TCP)
(HOST=10.100.101.102) (SERVICE=Data1XDB)'
```
- 2 Configure the attribute *remote\_login\_passwordfile*. Symantec recommends setting the attribute to NONE so that the database uses OS authentication and the configuration does not require a password file.  
A sample entry appears as: `remote_login_passwordfile = 'NONE'`

## Configuring the SPFILE

- If you use an SPFILE on Oracle 9i, first modify the PFILE to point to the SPFILE and then update the SPFILE.  
See “[Modify the PFILE \(Oracle 9i only\)](#)” on page 53.  
See “[Modifying the SPFILE \(Oracle 9i, 10g and 11g\)](#)” on page 53.
- If you use an SPFILE on Oracle 10g, update the SPFILE.  
See “[Modifying the SPFILE \(Oracle 9i, 10g and 11g\)](#)” on page 53.

### Modify the PFILE (Oracle 9i only)

On Oracle 9i, edit the PFILE so that it points to the SPFILE. The PFILE must contain only the following entry:

```
SPFILE = spfile_location
```

The variable *spfile\_location* represents the fully qualified path of the SPFILE on the shared disk.

### Modifying the SPFILE (Oracle 9i, 10g and 11g)

VCS requires a customized version of the SPFILE. Edit the SPFILE as instructed below.

Ensure that the Oracle database is mounted and is running. Make a backup copy of the SPFILE before you proceed.

#### To modify the SPFILE

- 1 Log on to the Oracle database as administrator and edit the dispatchers parameter by adding or editing the HOST parameter. Type the following commands on the command prompt:

```
C:\>sqlplus "/as sysdba"  
C:\>alter system set dispatchers =  
' (ADDRESS=(Protocol=TCP) (HOST=virtual_IP_address)  
(other entries))' scope=spfile;
```

The edited dispatchers parameter should look like:

```
dispatchers = '(ADDRESS=(Protocol=TCP) (HOST=virtual_IP_address)  
(other entries))'
```

The variable *virtual\_IP\_address* represents the virtual IP address that you specified for the IP resource in the temporary service group.

For example:

```
dispatchers = '(ADDRESS=(Protocol=TCP) (HOST=10.212.60.102)  
(SERVICE=Data1XDB)'
```

- 2 Configure the attribute *remote\_login\_passwordfile*.  
Type the following command on the command prompt:

```
C:\>alter system set remote_login_passwordfile='NONE'  
scope=spfile;
```

Symantec recommends setting the attribute to `NONE` so that the database uses OS authentication and the configuration does not require a password file.

- 3 Restart the database service.

## Moving the initialization file to shared disks (Oracle 10g and 11g)

For Oracle 10g, move the initialization files to the shared disk and configure the SPFILE to start a database instance.

### To move the initialization file

- 1 Verify which of the following initialization files exist in your configuration. The default location of these files is `<ORACLE_HOME>\database`.

- SPFILESID.ora
- SPFILE.ora
- initSID.ora

The variable `SID` represents the database instance.

- 2 Stop the database service using the Services snap-in.
- 3 Move the initialization files from the local disk to the shared disk, preferably at the same location as the database control files.
- 4 Create a PFILE to specify the location of the SPFILE. The PFILE must be in the same directory on the shared disk as the SPFILE.

Modify the PFILE so that it contain only the following entry:

```
SPFILE = spfile_location
```

The variable `spfile_location` represents the fully qualified path of the SPFILE on the shared disk.

For example, if your SPFILE is located at path `H:\Oracle\Data`, create a PFILE `sp_init.ora` in the same location `H:\Oracle\Data` with the following parameter:

```
SPFILE = H:\Oracle\Data\spfileSID.ora
```

## Setting the Oracle database parameters

Set the Oracle database parameters using the oradim utility. See the Oracle documentation for more information about this utility.

### To set the Oracle database parameters

- 1 Type the following on the command prompt:

```
C:\>set ORACLE_SID=<SID NAME>
```

The variable *SID* represents the database instance.

- 2 Run the oradim utility with parameters as specified.

Type the following on the command prompt:

```
C:\><ORACLE_HOME>\bin\oradim -edit -sid SID -pfile  
"pfile_location_on_shared_disk" -startmode auto  
-timeout 100 -shuttype srv,inst -shutmode i
```

The variable *SID* represents the database instance.

This command performs the following tasks:

- Sets the `-startmode` parameter to start the database instance automatically when Oracle service is started.
  - Sets the `-timeout` parameter to 100. The timeout parameter specifies the maximum wait time (in seconds) for the database shutdown to complete before the service for a particular SID stops.
  - Sets the `-shuttype` parameter to stop both the database instance and the service while shutting the database.
  - Sets the `-shutmode` parameter to shut the database instance as soon as the VCS database agent for Oracle requests.
- 3 Start the Oracle database service using the Services snap-in.

## Verifying the initialization file settings

If a PFILE is used:

- 1 From the **Start** menu, choose **Run**, type **regedit** and click **OK** to open the Registry Editor.
- 2 From the registry hive, navigate to the registry path  
HKEY\_LOCAL\_MACHINE\SOFTWARE\ORACLE\HOME\_ID\  
and double-click the `ORA_SID_PFILE` registry key.  
The variable `SID` represents the database instance.
- 3 Verify that the Value data field specifies the fully qualified path of the PFILE along with the file name.

If an SPFILE is used:

- 1 Stop and restart the database services.
- 2 Run `sqlplus.exe`.
- 3 Connect to the database.
- 4 Verify the following query returns the correct shared disk path for the SPFILE.

```
select value from v$parameter where name = 'spfile';
```

Alternatively, you can also run the following query

```
show parameter spfile;
```



## Configuring the Oracle and listener services

Complete these steps to configure the Oracle and Listener services.

### To configure the Oracle and Listener services

- 1 Click **Start > All Programs > Administrative Tools > Services** to Open the Services applet.
- 2 Set the startup type of the Oracle database service to manual and configure its Log On properties. Double-click the Oracle database service.  
In the SCM, Oracle database services appear as OracleService*SID*, where *SID* represents the database instance.
- 3 In the Properties window, click the **General** tab, and from the Startup Type drop-down list, select **Manual**.
- 4 Click **Stop** to stop the service.
- 5 On the Log On tab, choose **This Account** and enter the credentials of the user in whose context Oracle was installed.
- 6 On the General tab click **Start** to start the service with the new Log On properties, and then click **OK**.
- 7 Set the startup type of the Listener service to manual.
  - In the Services applet, double-click the listener service. Listener services appear as Oracle*Ora\_Home*TNSListenerName, where *Ora\_Home* represents the Oracle home directory and *ListenerName* is the name of the listener set during the installation.
  - In the Properties window, click the **General** tab.
  - From the Startup Type drop-down list, select **Manual** and click **OK**.

## Dismounting a volume

Dismount the volumes only if you plan to install Oracle on more nodes. If it's the last node for the Oracle installation, do not dismount the volumes. Dismounting a volume involves removing the drive letter or the folder path and deporting the disk group.

### To dismount a volume

- 1 Stop the database and listener services.
- 2 Click **Start > All Programs > Symantec > Veritas Storage Foundation > Veritas Enterprise Administrator** to open the Veritas Enterprise Administrator.
- 3 From the VEA console's tree view, right-click on the volume, and then click **File System > Change Drive Letter and Path**.
- 4 In the Drive Letter and Paths dialog box, select **Remove**.
- 5 Click **OK**.
- 6 From the VEA console's tree view, right-click the disk and then click **Deport Dynamic Group**.

# Configuring Oracle on failover nodes

Complete the following steps if you wish to install Oracle on failover nodes. Repeat these tasks on all the additional nodes that will participate in the Oracle service group.

The following steps do not apply for the system on which Oracle services were installed first. For example, if the first system is system A, and subsequent installations are performed on systems B and C, perform the following steps only from systems B and C.

## To configure Oracle on failover nodes

- 1 Mount the volumes configured for Oracle database, control, log files, flash recovery area, archive location, bdump, cdump, and udump files on this node and dismount them from the other nodes.  
See [“Mounting volumes”](#) on page 46.
- 2 Bring the temporary service group online on this node.  
See [“Bringing the temporary service group online”](#) on page 48.
- 3 Verify that the path of the Oracle bdump, cdump, and udump files is the same as that of the redo log files, on the shared storage.
- 4 Type the following on the command prompt:  

```
C:\>set ORACLE_SID=<SID NAME>
```

The variable *SID* represents the database instance.
- 5 Run the oradim utility with the parameters as specified.  
Type the following on the command prompt:  

```
C:\><ORACLE_HOME>\bin\oradim -new -sid SID -pfile  
"pfile_location_on_shared_disk" -startmode auto  
-timeout 100 -shuttype srvc,inst -shutmode i
```

The variable *SID* represents the database instance.  
This command performs the following tasks:

  - Sets the `-startmode` parameter to start the database instance automatically when Oracle service is started.
  - Sets the `-timeout` parameter to 100. The timeout parameter specifies the maximum wait time (in seconds) for the database shutdown to complete before the service for a particular SID stops.
  - Sets the `-shuttype` parameter to stop both the database instance and the service while shutting the database.
  - Sets the `-shutmode` parameter to shut the database instance as soon as the VCS database agent for Oracle requests.
- 6 Create a listener service using the Oracle Net Configuration Assistant. Refer to the Oracle documentation for instructions.

- 7 Stop the listener service and make a backup copy of the original files, `tnsnames.ora` and `listener.ora`, from the first node.
- 8 Copy the files, `tnsnames.ora` and `listener.ora` from the first node to the current node, at the same directory as that on the first node.  
The path for `tnsnames.ora` and `listener.ora` must be the same on all failover nodes.
- 9 From the Services snap-in, set the startup type of the Listener service to Manual and then restart the Listener and the Oracle service for the database instance on the node.  
In the Services snap-in, the names of Oracle services appear as `OracleServiceSID`, where `SID` represents the database instance.
- 10 Verify access to the database by connecting to it and running a `select` query.

# Configuring the Oracle service group

This chapter contains the following topics:

- [“About configuring the Oracle service group”](#) on page 62
- [“Deleting the temporary service group”](#) on page 62
- [“About configuring the Oracle service group using the wizard”](#) on page 63
- [“Verifying the Oracle service group configuration”](#) on page 71

## About configuring the Oracle service group

Configuring the Oracle service group involves creating the Oracle service group, its resources, and defining attribute values for the configured resources.

VCS provides several ways to configure the Oracle service group; the Oracle Configuration Wizard, the Java and Web consoles, and the command line. This chapter provides instructions on how to use the Oracle Configuration Wizard to configure the service group.

## Deleting the temporary service group

Before configuring the Oracle service group, delete the temporary service group with the IP resource, that you created earlier.

### To delete the temporary service group

- 1 Bring the temporary service group online on a cluster node.  
From the Cluster Manager (Java Console), right-click the temporary service group name in the left pane, click **Online** and then click the node name (on which you want to run the wizard) from the list.
- 2 Click **Yes** on the confirmation dialog box.
- 3 Delete the temporary service group.  
From the Cluster Manager (Java Console), right-click the temporary service group name in the left pane and click **Delete**.
- 4 Click **Yes** on the confirmation dialog box.

# About configuring the Oracle service group using the wizard

VCS provides a configuration wizard that guides you through the process of configuring the Oracle service group. You can use the wizard to create and modify Oracle service groups.

This section describes the steps required to create a new Oracle service group using the wizard. You can also use the wizard to modify an existing service group.

See “[About modifying an Oracle service group](#)” on page 76.

Before configuring the Oracle agent, review the resource type and the attribute definitions of the Oracle agents.

See “[Resource type definitions](#)” on page 91.

For sample configuration file and resource dependency graph of the Oracle service group, see “[Sample configuration](#)” on page 97.

## Prerequisites for configuring the Oracle service group

Note the following requirements before configuring the service group:

- Ensure that the disk groups, volumes or LUNs that you specify for the Oracle service group are not already configured in another service group in the Organization Unit in the server farm. The wizard does not validate the shared storage; if the volumes or LUNs are used in one more service groups simultaneously, it may lead to an erroneous configuration.
  - If you have configured Windows Firewall, add the following to the Firewall Exceptions list:
    - Port 14150 or the VCS Command Server service  
`%vcs_home%\bin\CmdServer.exe`  
Here, `%vcs_home%` is the installation directory for VCS, typically `C:\Program Files\Veritas\Cluster Server`.
    - Port 14141
- For a detailed list of services and ports used by SFW HA, refer to the *Veritas Storage Foundation and High Availability Solutions for Windows Installation and Upgrade Guide*.
- Verify that SFW HA, along with the VCS database agent for Oracle, is installed on all cluster nodes.  
See “[Installing the VCS agent for Oracle](#)” on page 17 for instructions.
  - Verify a VCS cluster is configured using VCS Cluster Configuration Wizard (VCW).

See “[Configuring the cluster](#)” on page 19.

- You must be a Cluster Administrator. This user classification is required to create and configure a service group.
- You must be a Domain Administrator on the node where you run the wizard.
- Verify that the Veritas High Availability engine (HAD) is running on the system from where you run the wizard.
- Mount the shared drives containing the data files, control files, redo log files, bdump, cdump, and udump files. Unmount the drives from other nodes in the cluster.
- Mount the database and start the Oracle instance on the node running the wizard.
- Make sure that you have the following information ready; the wizard will prompt you for this information:
  - The databases and listeners to be monitored by VCS
  - For the instances to be monitored in detail, name and location of the respective SQL files
  - A valid domain name, user name, and password with which the database service was configured for the database

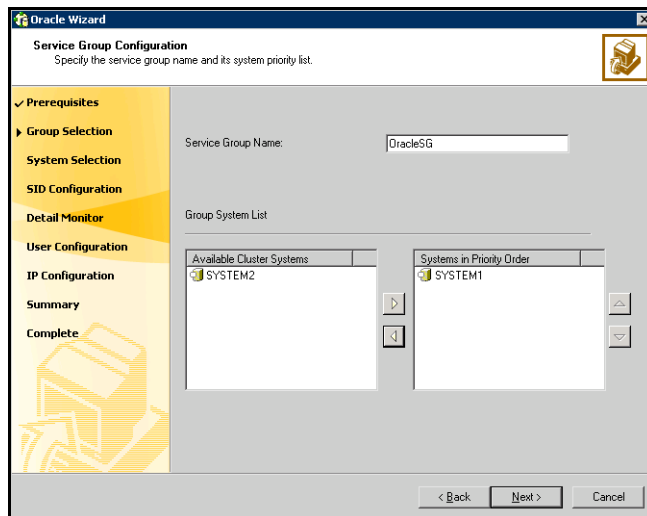


## Configuring the Oracle service group

Configure an Oracle service group using the Oracle Configuration Wizard.

### To configure an Oracle service group

- 1 Click **Start > All Programs > Symantec > Veritas Cluster Server > Configuration Tools > Oracle Configuration Wizard** to start the Oracle Configuration Wizard.
- 2 In the Welcome panel click **Next**.
- 3 In the Wizard Options panel, select **Create service group** and click **Next**.
- 4 In the Service Group Configuration panel, complete the following and click **Next**. The wizard starts validating your configuration. Various messages indicate the validation status.



Service Group Name

Type a name for the Oracle service group.

### Available Cluster Systems

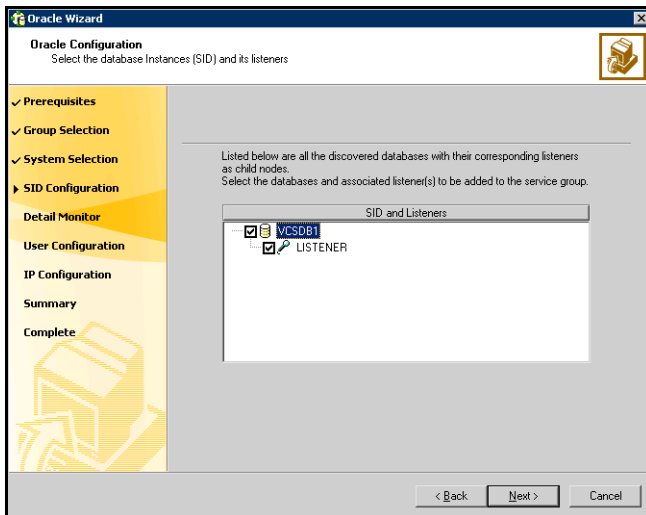
Select the systems on which to configure the service group and click the right arrow to move the systems to the Systems in Priority Order box.

The Systems in Priority Order box represents the service group's system list. The system at the top of the list has the highest priority while the system at the bottom of the list has the lowest priority.

To remove a system from the service group's system list, select a system in the Systems in Priority Order box and click the left arrow.

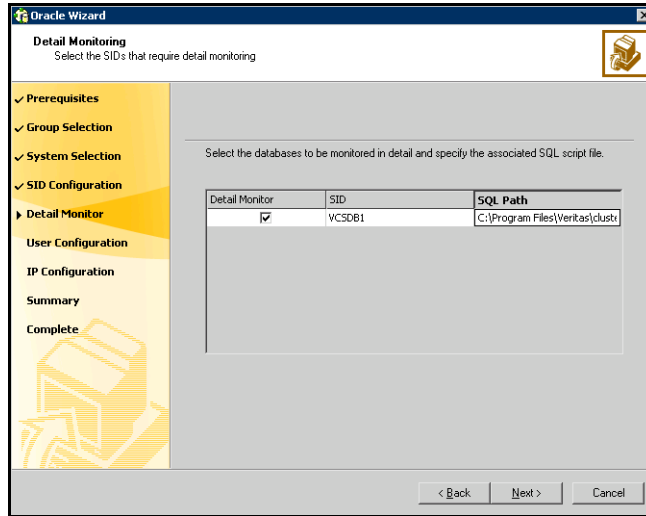
To change a system's priority in the service group's system list, select the system from the Systems in Priority Order box, and click the up and down arrows.

- 5 In the Oracle Configuration panel, select the SIDs and the associated listeners to be added to the service group, and then click **Next**.



The SID is a system identifier that uniquely identifies the Oracle database instance, while the listener is the name of the corresponding listener service.

- On the Detail Monitoring panel, configure detail monitoring for the Oracle database if required, and then click **Next**.

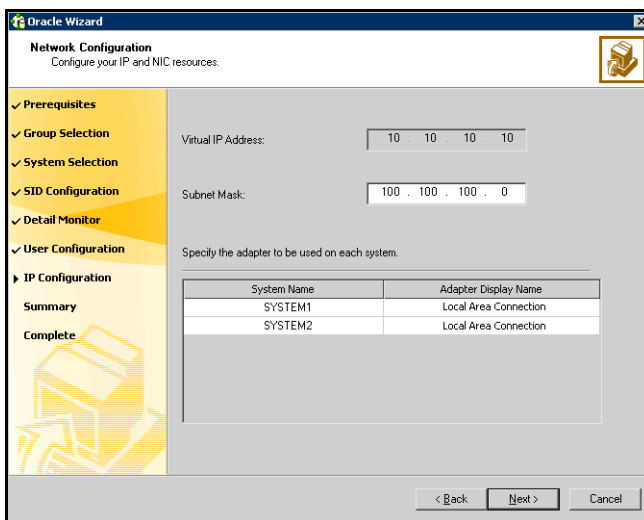


**Detail Monitor** Check the Detail Monitor option corresponding to each database that you want to configure detail monitoring for.

**SQL Path** Type the path of the SQL file that will query the database to validate the status. Click the icon next to the field to browse for the SQL file.  
 A sample SQL file, check.sql, is located at  
`%VCS_HOME%\bin\Oracle\.`

- In the Domain and User selection panel, type a valid domain name, user name, and password with which the database service was configured for the database and click **Next**.  
 See “[Configuring the Oracle and listener services](#)” on page 57 for more information.
- On the Network Configuration panel, specify the network related information and then click **Next**.

The wizard discovers and displays the virtual IP address for the Oracle Server.



Subnet Mask

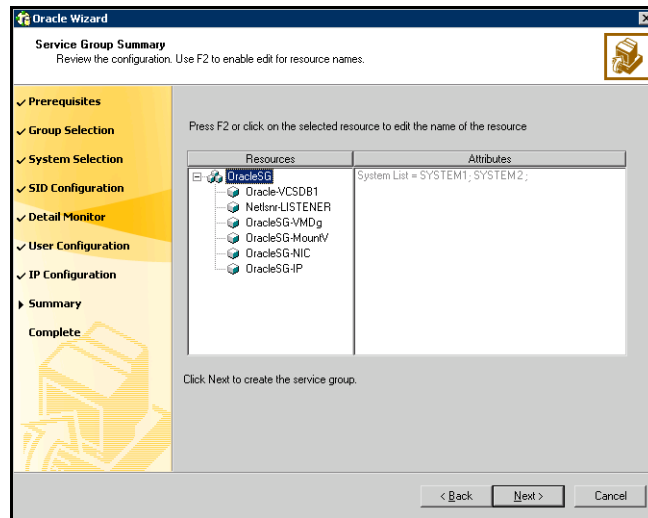
Type the subnet mask to which the virtual IP belongs.

Adapter Display Name

For each system in the cluster, select the public network adapter. Select the Adapter Name field to view the adapters associated with a system.

The wizard displays all TCP/IP enabled adapters on a system, including the private network adapters, if they are TCP/IP enabled. Make sure that you select the adapters to be assigned to the public network, and not those assigned to the private network.

- In the Summary panel, review the configuration and then click **Next**.



Resources

Lists the configured resources. Click on a resource to view its attributes and their configured values in the Attributes box. The wizard assigns unique names to the resources. To edit a resource name, select the resource name and click on it, or press the F2 key. After the edit, press the Esc key to cancel the changes, or press the Enter key to confirm the changes.

- In the confirmation dialog box, click **Yes**. Click **No** if you wish to review your settings. The wizard starts running commands to create the Oracle service group.
- On the Completing the Oracle Configuration panel, check **Bring the service group online** to bring the service group online on the local system, and click **Finish**. The Oracle service group is created in your cluster.

## Configuring dependent services

If the database service has other dependent services, make sure the dependent services are running on the node where the database service is online. Note that the online agent operation brings only the database service online and not the dependent services.

For example, on Oracle 10g, the DBConsole service corresponding to an Oracle database has a dependency on the database service. That is, for the Enterprise Manager to manage the databases, you must make sure the DBConsole service is running on the node where the database service is online.

### To configure a dependent service

- 1 For the dependent service, add a GenericService resource manually.  
Refer to the *Veritas Cluster Server Administrator's Guide* for configuration instructions.
- 2 Make the GenericService resource dependent on the corresponding Oracle resource.
- 3 Set the Critical attribute to False if the Oracle service group must not fail over when the GenericService resource faults.

# Verifying the Oracle service group configuration

This section provides steps to verify an Oracle service group configuration by bringing the service group online, taking it offline, and switching the service group to another cluster node.

## Bringing the service group online

Perform the following steps to bring the service group online from the VCS Java or Web Console.

### To bring a service group online from the Java Console

- 1 In the Cluster Explorer configuration tree, select the Oracle service group to be taken online.
- 2 Right-click the service group and select to online the service group on the system. (Right-click > Online > *system\_name*)

### To bring a service group online from the Web Console

- 1 On the **Service Group** page (**Cluster Summary > All Groups > Service Group**), click **Online**.
- 2 In the Online Group dialog box, select the system on which to bring the service group online.
- 3 To run PreOnline script, select the **Run PreOnline Script** check box.
- 4 Click **OK**.

## Taking the service group offline

Perform the following steps to take the service group offline from the VCS Java or Web Console.

### To take a service group offline from the Java Console

- 1 On the **Service Groups** tab of the Cluster Explorer configuration tree, right-click the service group.  
*or*  
Select the cluster in the Cluster Explorer configuration tree, select the **Service Groups** tab, and right-click the service group icon in the view panel.
- 2 Choose **Offline**, and choose the appropriate system from the pop-up menu. (Right-click > Offline > *system\_name*)

### To take a service group offline from the Web Console

- 1 On the **Service Group** page (**Cluster Summary > All Groups > Service Group**), click **Offline**. This opens the Offline Group dialog box.
- 2 Select the system on which to take the service group offline.
- 3 Click **OK**.



## Switching the service group

The process of switching a service group involves taking it offline on its current system and bringing it online on another system.

### To switch a service group from the Java Console

- 1 In the **Service Groups** tab of the Cluster Explorer configuration tree, right-click the service group.  
*or*  
Select the cluster in the Cluster Explorer configuration tree, select the Service Groups tab, and right-click the service group icon in the view panel.
- 2 Choose **Switch To**, and choose the appropriate system from the pop-up menu. (Right-click > Switch To > *system\_name*)

### To switch a service group from the Web Console

- 1 From the Service Group page (**Cluster Summary > All Groups > Service Group**), click **Switch**.
- 2 In the Switch Group dialog box, select the system to switch the service group to.
- 3 Click **OK**.

## Disabling the service group

To disable the agent, you must change the Oracle service group to an OFFLINE state. You can stop the application completely or switch the agent to another system.

### To disable a service group from the Java Console

- 1 In the **Service Groups** tab of the Cluster Explorer configuration tree, right-click the service group.  
*or*  
Select the cluster in the Cluster Explorer configuration tree, select the **Service Groups** tab, and right-click the service group icon in the view panel.
- 2 Choose **Disable**, and choose the appropriate system from the pop-up menu.

### To disable a service group from the Web Console

- 1 In the **Service Group** page (**Cluster Summary > All Groups > Service Group**), click **Disable**. This opens the Disable Group dialog box.
- 2 Select the system on which to disable the service group. To disable the service group on all systems, click **All Systems**.

# Administering the Oracle service group

This chapter contains the following topics:

- [“About administering the Oracle service group”](#) on page 76
- [“About modifying an Oracle service group”](#) on page 76
- [“Deleting an Oracle service group”](#) on page 78
- [“About configuring detail monitoring”](#) on page 79

## About administering the Oracle service group

This chapter describes the administrative tasks you can perform on Oracle service groups such as modifying the service group configuration and deleting a service group. The chapter also describes steps to configure detail monitoring for an Oracle database.

## About modifying an Oracle service group

The following steps describe how to modify the configuration of the service groups using the configuration wizard.

### Prerequisites for modifying the Oracle service group

- If the Oracle service group is online, you must run the Oracle Configuration Wizard from a node on which the service group is online. You can then use the wizard to add resources to and remove them from the configuration. You cannot change resource attributes.  
You can however enable and disable the SIDs and listeners to be monitored in detail and change their detail monitoring options when the Oracle service group is online.
- To change the resource attributes, you must take the service group offline. However, the MountV and VMDg resources for the service group should be online on the node where you run the wizard and offline on all other nodes.
- If you are running the wizard to remove a node from the service group's system list, do not run the wizard on the node being removed.

## Modifying an Oracle service group

The following steps describe how to modify an Oracle service group using the Oracle Configuration Wizard.

### To modify an Oracle service group

- 1 Click **Start > All Programs > Symantec > Veritas Cluster Server > Configuration Tools > Oracle Configuration Wizard** to start the Oracle Configuration Wizard.
- 2 Review the prerequisites and click **Next**.
- 3 In the Wizard Options panel, click **Modify service group**, select the service group to modify, and click **Next**.
- 4 Follow the wizard instructions and make desired modifications to the service group configuration.  
See “[Configuring the Oracle service group](#)” on page 65.

## Deleting an Oracle service group

The following steps describe how to delete an Oracle service group using the Oracle Configuration Wizard.

### To delete an Oracle service group

- 1 Click **Start > All Programs > Symantec > Veritas Cluster Server > Configuration Tools > Oracle Configuration Wizard** to start the Oracle Configuration Wizard.
- 2 Review the prerequisites and click **Next**.
- 3 In the Wizard Options panel, click **Delete service group**, select the service group to delete, and click **Next**.
- 4 In the Service Group Summary panel, click **Next**.
- 5 On the message that informs you that the wizard will run commands to delete the service group, click **Yes** to delete the service group and then click **Finish**.

## About configuring detail monitoring

Use the detail monitoring capability of VCS database agent for Oracle to monitor the status of a database. Before setting up detail monitoring, you must have the agent running at the basic level of monitoring, that is, the DetailMonitor attribute must be set to False.

The Oracle agent uses a script to monitor the status of the database. A sample SQL script, located at %VCS\_HOME%\bin\Oracle\check.sql, is provided with the agent for the purpose. If the script is successfully executed during monitoring, the agent considers the database instance available. If the execution fails, the database instance is considered not available and the service group faults and fails over to the failover nodes. You can customize the script to meet your configuration requirements.

---

**Note:** You must use a separate script for each Oracle service group that exists in the cluster. The script must exist on all the nodes in the service group.

---

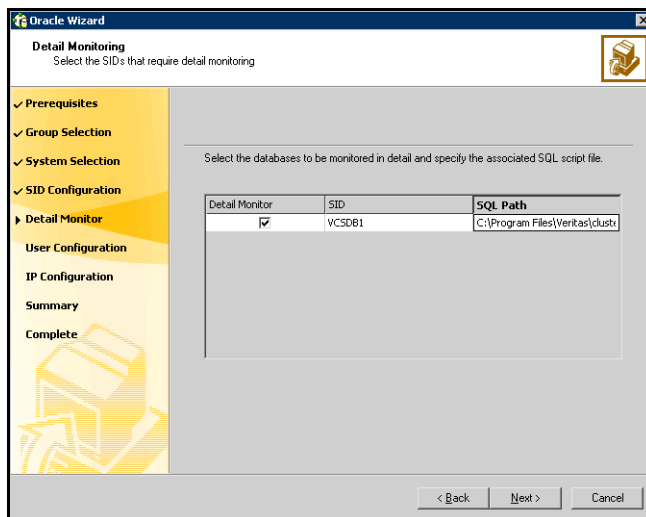
Symantec recommends that before configuring detail monitoring, you must ensure that Oracle is configured correctly and you are able to connect to the database.

## Enabling detail monitoring

The following steps describe how to enable detail monitoring using the Oracle Configuration Wizard.

### To enable detail monitoring

- 1 Click **Start > All Programs > Symantec > Veritas Cluster Server > Configuration Tools > Oracle Configuration Wizard** to start the Oracle Configuration Wizard.
- 2 Review the prerequisites and click **Next**.
- 3 In the Wizard Options panel, click **Modify service group**, select the service group configured for the instance to be monitored in detail, and click **Next**.
- 4 In the Oracle Configuration panel, select the SIDs to be configured along with their respective listeners and click **Next**.
- 5 In the Detail Monitoring dialog box, specify information to enable detail monitoring, and then click **Next**.



Detail Monitor

Check the Detail Monitor option corresponding to each database that you want to configure detail monitoring for.

SQL Path

Type the path of the SQL file that will query the database to validate the status. Click the icon next to the field to browse for the SQL file.

A sample SQL file, check.sql, is located at  
`%VCS_HOME%\bin\Oracle\.`



- 6 In the Domain and User selection panel, type a valid domain name, user name, password, and then click **Next**.
- 7 Follow the wizard instructions and accept the default values in the subsequent dialog boxes.  
See “[Configuring the Oracle service group](#)” on page 65.

## Disabling detail monitoring

The following steps describe how to disable detail monitoring using the Oracle Configuration Wizard.

### To disable detail monitoring

- 1 Click **Start > All Programs > Symantec > Veritas Cluster Server > Configuration Tools > Oracle Configuration Wizard** to start the Oracle Configuration Wizard.
- 2 Review the prerequisites and click **Next**.
- 3 In the Wizard Options panel, click **Modify service group**, select the service group configured for the instance for which detail monitoring is being disabled, and click **Next**.
- 4 In the Oracle Configuration panel, click **Next**.
- 5 In the Detail Monitoring Configuration panel, uncheck the check box corresponding to the Oracle Server instance for which detail monitoring is being disabled and click **Next**.
- 6 Follow the wizard instructions and accept the default values in the subsequent dialog boxes.  
See “[Configuring the Oracle service group](#)” on page 65.



# Troubleshooting VCS agents

This chapter contains the following topics:

- [“About troubleshooting the VCS agent for Oracle”](#) on page 84
- [“Common problems with the VCS agent for Oracle”](#) on page 84
- [“About VCS logging”](#) on page 86
- [“Oracle agent error messages”](#) on page 88

## About troubleshooting the VCS agent for Oracle

This chapter lists some commonly encountered problems with the Oracle agent and some possible solutions. It also lists the error messages associated with the VCS database agent for Oracle. Each message includes a description and a recommended solution, if applicable.

## Common problems with the VCS agent for Oracle

Occasionally you may encounter problems when using the Oracle database agent.

[Table 6-1](#) describes the most common messages of type ERROR and WARNING. Each message includes a description and a recommended solution, if applicable.

**Table 6-1** Problems when using Oracle database agent

Message	Description
The Oracle service starts, but does not start the database.	Make sure the Oracle database parameter <code>startmode</code> is set to <code>auto</code> . Make sure the path of the initialization file is set correctly. Verify access to the shared disk.
Clients cannot connect to the virtual IP address set for the service group.	Verify that the listener is configured with virtual IP address in the host location.
Resource returns offline during detail monitoring.	This could occur because the database is offline or has not been mounted or opened properly. Check the error in the log file for further details. Verify the configuration definition of the agent. Make sure that the correct file name is specified in the configuration. Verify access to sqlplus from the command prompt.
The sqlplus script cannot be run because sqlplus returns a process error.	If the script timed out, increase the timeout value set in the attribute <code>SQLTimeOut</code> . Otherwise, try recreating the Oracle service using the <code>oradim</code> utility.
The Oracle wizard could not locate PFILE or SPFILE for a database.	Make sure the initialization file settings are configured correctly. See “ <a href="#">Verifying the initialization file settings</a> ” on page 56.

**Table 6-1** Problems when using Oracle database agent (Continued)

Message	Description
<p>Listener service does not start after configuring the virtual IP address.</p>	<p>Make sure the virtual IP address is configured correctly for the listeners.</p> <p>Another possible cause is that the listener.ora file is corrupted.</p> <p><b>Solution</b></p> <p>Complete the following steps in the order given:</p> <ul style="list-style-type: none"> <li>■ Stop the listener services on the node.</li> <li>■ Rename the listener.ora file.</li> <li>■ Recreate the listeners using the Net Configuration Assistant.</li> <li>■ Bring up the virtual IP on the node.</li> <li>■ Configure the virtual IP address for the newly created listeners using the Net Manager.</li> <li>■ Restart the listener services.</li> <li>■ Run <code>lsnrctl status</code> command for each listener to verify the virtual IP address.</li> </ul> <p>Refer to the Oracle documentation for instructions on using the Net Configuration Assistant and the Net Manager.</p>

## About VCS logging

VCS generates two error message logs: the engine logs and the agent logs. Log file names are appended by letters. Letter A indicates the first log file, B the second, C the third, and so on.

The agent log is located at %VCS\_HOME%\log\agent\_A.txt. The format of agent log messages is:

Timestamp (Year/MM/DD) | Mnemonic | Severity | UMI | Agent Type |  
Resource Name | Entry Point | Message Text

The agent log message components are defined as follows:

- Timestamp denotes the date and time when the message was logged.
- Mnemonic denotes which Symantec product logs the message. For VCS database agent for Oracle, mnemonic is 'VCS'.
- Severity denotes the seriousness of the message. Severity of the VCS error messages is classified into the following types:

CRITICAL	Indicates a critical error within a VCS process. Contact Technical Support immediately.
ERROR	Indicates failure of a cluster component, unanticipated state change, or termination or unsuccessful completion of a VCS action.
WARNING	Indicates a warning or error, but not an actual fault.
NOTE	Informs the user that VCS has initiated an action.
INFO	Informs the user of various state messages or comments. Of these, CRITICAL, ERROR, and WARNING indicate actual errors. NOTE and INFO provide additional information.

- UMI or Unique Message ID is a combination of Originator ID, Category ID, and Message ID. For example, the UMI for a message generated by the Oracle agent would resemble: V-16-20046-5  
Originator ID for all VCS products is 'V-16.' Category ID for Oracle agent is 20046, for Netlsnr agent is 20047. Message ID is a unique number assigned to the message text.
- Message text denotes the actual message string.

You can view these message logs using Notepad or any text editor. All messages are logged to the engine and the agent logs. Messages of type CRITICAL and ERROR are written to the Windows event log.

A typical agent log resembles:

```
2005/05/10 09:32:44 VCS NOTICE V-16-20046-5 Oracle:  
Oracle-DATA1:online:Service status is Running
```

## Oracle agent error messages

Table 6-2 describes the error messages for the VCS agent for Oracle. The messages are of type ERROR and WARNING. Each message includes a description and a recommended solution, if applicable.

**Table 6-2** Oracle agent error messages

Message	Description
Cannot open service handle.	<p>The agent could not open the Service Control Manager handle. This may occur because of an invalid service name.</p> <p>Solution: Verify that the correct service name is specified in the configuration definition of the agent.</p>
Cannot start service.	<p>The agent could not start the specified service. This may occur because of the following:</p> <ul style="list-style-type: none"> <li>■ The specified SCM handle does not have access to the service. or</li> <li>■ The specified handle is invalid.</li> </ul> <p>Solution: Verify that the service name in the configuration file is the same as the name displayed by the SCM. Verify that the specified service is supported by the host. Verify that the service is listed in the SCM window.</p>
Wait for mutex failed.	<p>The wait function for mutex failed. This message is followed by an error code. Check the error code for more information.</p>
Wait for mutex abandoned.	<p>The mutex object is was not released by the thread that owned the mutex object before the thread terminated. This indicates a possibility that the SQL script is not terminated.</p> <p>Solution: Verify that the SQL script executed correctly.</p>
Cannot wait for mutex object.	<p>The agent could not acquire mutex for the resource. This may occur if two or more Oracle resources configured.</p> <p>Solution: Verify that the SQL script executed correctly.</p>
Failed to decrypt password.	<p>The agent could not decrypt the domain password.</p> <p>Solution: Verify that the password was encrypted using the VCS Encrypt utility.</p>



**Table 6-2** Oracle agent error messages (Continued)

Message	Description
No domain specified in argument list.	<p>The attribute Domain is not configured for the resource.</p> <p>Solution: Verify that the correct Domain is defined in the configuration file.</p>
No username specified in argument list.	<p>The attribute UserName is not configured for the resource.</p> <p>Solution: Verify that the correct UserName is defined in the configuration file.</p>
No password specified in argument list.	<p>The attribute Password is not configured for the resource.</p> <p>Solution: Verify that the password is encrypted using the VCS Encrypt utility. Verify that the correct encrypted password is defined in the configuration file.</p>
No SID specified in argument list.	<p>The configuration definition of the agent does not contain a value for the attribute SID.</p> <p>Solution: Verify that the attribute SID is correctly defined in the configuration file.</p>
SQL*Plus process exited with error <i>error_code</i> .	<p>The agent could not execute the SQL*Plus process correctly. See the associated error code for more information.</p>
Invalid filename in argument list <i>file_name</i> .	<p>The SQL script for the resource is incorrectly defined in the filename.</p> <p>Solution: Verify that the attribute SQLFile is correctly defined in the configuration file. Verify the validity of the file name and path.</p>
An Oracle error occurred.	<p>An error occurred while generating the SQL script. This is an Oracle error and the corresponding error number and error message is logged to the agent log.</p>
Insufficient Privileges	<p>This error may occur while you attempt to connect to the database. It occurs because the logged-on user is not a part of the “dba_org” user group on the system under context.</p> <p>Solution: Add the user to the system’s “dba_ora” group.</p>

Table 6-3 describes the error messages for the Netlsnr agent. The messages are of type ERROR and WARNING. Each message includes a description and a recommended solution, if applicable.

**Table 6-3** Netlsnr agent error messages

Message	Description
Cannot open service handle.	<p>The agent could not open the Service Control Manager handle. This may occur because of an invalid service name.</p> <p>Solution: Verify that the correct service name is specified in the configuration definition of the agent.</p>
Cannot start service.	<p>The agent could not start the specified service. This may occur because of the following:</p> <ul style="list-style-type: none"> <li>■ The specified SCM handle does not have access to the service. or</li> <li>■ The specified handle is invalid.</li> </ul> <p>Solution: Verify that the service name in the configuration file is the same as the name displayed by the SCM. Verify that the specified service is supported by the host. Verify that the service is listed in the SCM window.</p>
Cannot stop the service.	<p>The agent could not stop the specified service. This may occur because of the following:</p> <ul style="list-style-type: none"> <li>■ The specified service was not opened successfully.</li> <li>■ The specified service was not opened with the required access.</li> </ul> <p>Solution: Verify that the service was opened successfully. Check the access with which the service was opened.</p>
Cannot close service handle.	<p>The agent could not close the Service Control Manager handle.</p> <p>Solution: Verify that the specified service is running.</p>

# Resource type definitions

This appendix contains the following topics:

- [“About resource type definitions”](#) on page 92
- [“Oracle agent”](#) on page 92
- [“Netlsnr agent”](#) on page 95

## About resource type definitions

This appendix lists the resource type definition and attribute definitions of the VCS agents for Oracle. The resource type represents the VCS configuration definition of the agent and specifies how the agent is defined in the configuration file `main.cf`. The Attribute Definitions table explains the attributes associated with the agent.

## Oracle agent

The Oracle agent resource type definition and attribute definitions are as follows. This information will assist you during the agent configuration.

### Type definition

The Oracle agent is configured as a resource of type Oracle.

```
type Oracle (  
    static keylist SupportedActions = { DBRestrict, DBUndoRestrict,  
    DBResume, DBSuspend, DBQuiesce, DBUnQuiesce }  
    static i18nstr ArgList[] = { ServiceName, DelayAfterOnline,  
    DelayAfterOffline, DetailMonitor, IndepthMonitorCount, SID,  
    Domain, UserName, EncryptedPasswd, SQLFile, SQLTimeOut }  
    str ServiceName  
    int DelayAfterOnline = 20  
    int DelayAfterOffline = 20  
    boolean DetailMonitor = 0  
    int IndepthMonitorCount = 5  
    str SID  
    str Domain  
    str UserName  
    str EncryptedPasswd  
    str SQLFile  
    int SQLTimeOut = 20  
)
```

## Attribute definitions

[Table A-1](#) on page 93 describes the attributes associated with the VCS agent for Oracle. The Required attributes table lists the attributes that must be configured for the agent to function properly.

**Table A-1** Oracle agent - required attributes

Required Attribute	Type and Dimension	Definition
ServiceName	string-scalar	The name of the Oracle service set during the installation of Oracle. The service name is specified in the format OracleService <i>SID</i> , where <i>SID</i> represents the database instance.
Domain	string-scalar	The name of the domain to which the user belongs in whose context Oracle was installed.
SID	string-scalar	A system identifier that uniquely identifies the Oracle database instance to be monitored in detail.
UserName	string-scalar	The name of the domain user in whose context Oracle was installed.
EncryptedPasswd	string-scalar	The encrypted password for the user identified by UserName. The password must be encrypted with the VCS Encrypt utility.

[Table A-2](#) on page 93 describes the optional attributes associated with the VCS agent for Oracle.

**Table A-2** Oracle agent - optional attributes

Optional Attributes	Type and Dimension	Definition
DelayAfterOffline	integer-scalar	Number of seconds the agent waits to start the monitoring routine after Oracle is taken offline. Default = 20
DelayAfterOnline	integer-scalar	Number of seconds the agent waits to start the monitoring routine after Oracle is brought online. Default = 20

**Table A-2** Oracle agent - optional attributes (Continued)

Optional Attributes	Type and Dimension	Definition
DetailMonitor	boolean-scalar	<p>A flag that defines whether the agent monitors Oracle in detail by trying to verify access to the database by running a SQL script. The value 1 indicates that the agent will monitor Oracle in detail. The value 0 indicates that the agent will not.</p> <p>Default = 0</p> <p>If the DetailMonitor flag is set to 1, the following attributes must be defined:</p> <ul style="list-style-type: none"> <li>■ SID</li> <li>■ SQLFile</li> </ul>
IndepthMonitorCount	integer-scalar	<p>An integer that defines the monitor interval between two consecutive detail monitoring cycles. If this attribute is set to 5, the agent monitors the application in detail after every five monitor intervals.</p> <p>Default = 5</p> <p><b>Note:</b> Do not set the value of this attribute to 0.</p>
SQLTimeOut	integer-scalar	<p>The number of seconds the agent waits for the SQL script to return a value during detail monitoring. If this limit exceeds, the resource is declared faulted.</p> <p>Default = 20</p>

Table A-2 Oracle agent - optional attributes (Continued)

Optional Attributes	Type and Dimension	Definition
SQLFile	string-scalar	<p>The name of SQL script to be used for detail monitoring, along with its complete path. The agent verifies the existence of this file.</p> <p>A sample file, check.sql, is located at <code>%VCS_HOME%\bin\Oracle\</code>. The sample file contents are:</p> <pre>select * from v\$database;</pre> <p>Do not include any spool commands within the SQL script.</p> <p>If an Oracle error occurs during execution, the error is logged to the agent log. If debug logging is also enabled for the resource, the output of the SQL script is also logged to the agent log.</p>

## Netlsnr agent

The Netlsnr agent resource type definition and attribute definitions are as follows. This information will assist you during the agent configuration.

### Type definition

The Netlsnr agent is configured as a resource of type Netlsnr.

```
type Netlsnr (
    static i18nstr ArgList[] = { ServiceName, DelayAfterOnline,
        DelayAfterOffline }
    str ServiceName
    int DelayAfterOnline = 20
    int DelayAfterOffline = 20
)
```

## Attribute definitions

[Table A-3](#) on page 96 describes the attributes associated with the Netlsnr agent. The Required attributes table lists the attributes that must be configured for the agent to function properly.

**Table A-3** Netlsnr agent - required attributes

Required Attribute	Type and Dimension	Definition
ServiceName	string-scalar	The name of the configured listener service.  The service name is specified in the format <i>OracleOraHomeTNSListenerName</i> , where <i>OraHome</i> represents the Oracle home set during the installation and <i>ListenerName</i> represents the name of the configured listener.

[Table A-4](#) on page 96 describes the optional attributes associated with the Netlsnr agent.

**Table A-4** Netlsnr agent - optional attributes

Optional Attributes	Type and Dimension	Definition
DelayAfterOffline	integer-scalar	Number of seconds the agent waits to start the monitor routine after the listener is taken offline.  Default = 20
DelayAfterOnline	integer-scalar	Number of seconds the agent waits to start the monitor routine after the listener is brought online.  Default = 20



# Sample configuration

This appendix contains the following topics:

- [“About sample configurations”](#) on page 98
- [“Resource dependency graph”](#) on page 98
- [“Sample configuration file”](#) on page 99

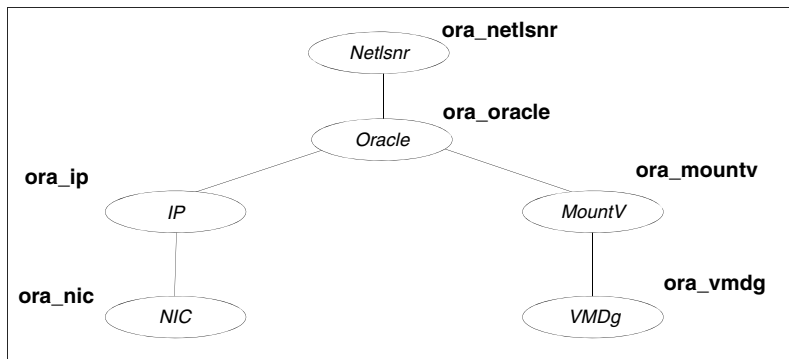
## About sample configurations

This appendix describes a typical service group configured to monitor the state of Oracle in a VCS cluster. The sample dependency graph depicts the resource types, resources, and resource dependencies within the service group. The sample configuration file (`main.cf`) is also included for your reference. Review the dependency carefully before configuring the agent. For more information about VCS resource types, see the *Veritas Cluster Server Bundled Agents Reference Guide*.

## Resource dependency graph

In the sample configuration shown in the dependency graph below, the shared disk group is configured using the Volume Manager (VMDg) agent. The shared volume on which Oracle shared data is installed is mounted as drive G:\ using the MountV agent. The service group IP address for the server is configured using the IP and NIC resource types. The Oracle resource can be started after each of these resources is brought online.

**Figure B-1** Sample Oracle service group resource dependency graph



## Sample configuration file

```
include "types.cf"

cluster oraclus (
    UserNames = { admin = "lF[YcdW`eaYbddX^Z`" }
    Administrators = { admin }
)

system VCSW2K67 (
)

system VCSW2K68 (
)

group OraVM (
    SystemList = { VCSW2K67 = 1, VCSW2K68 = 2 }
)

IP Ora_IP (
    Address = "172.29.10.254"
    SubNetMask = "255.255.255.0"
    MACAddress @VCSW2K67 = "00-02-B3-02-AE-81"
    MACAddress @VCSW2K68 = "00-D0-B7-8E-D8-35"
)

MountV Ora_MountV (
    MountPath = "G:"
    VolumeName = Oracle
    VMDGResName = Ora_VMDg
)

NIC Ora_NIC (
    MACAddress @VCSW2K67 = "00-02-B3-02-AE-81"
    MACAddress @VCSW2K68 = "00-D0-B7-8E-D8-35"
)

Netlsnr Ora_Netlsnr(
    ServiceName = OracleOraHome92TNSListener
)

Oracle Ora_Oracle
    ServiceName = OracleServiceOra
    DetailMonitor = 1
    SID = Ora
    Domain = vcsnet
    UserName = Administrator
    EncryptedPasswd = FTLrITi
    SQLFile = "D:\\Program Files\\Veritas\\cluster
server\\bin\\Oracle\\check.SQL"
```

```
)  
  
VMDg Ora_VMDg (  
    DiskGroupName = VCSDG  
    ForceDeport = 1  
    ListMountedVolumes = 1  
    ListApplications = 1  
)  
  
Ora_IP requires Ora_NIC  
Ora_MountV requires Ora_VMDg  
Ora_Oracle requires Ora_IP  
Ora_Oracle requires Ora_MountV  
Ora_Netlsnr requires Ora_Oracle
```

# Oracle Enterprise Manager 10g Grid Control with VCS

This appendix contains the following topics:

- [“About Oracle Enterprise Manager 10g with VCS”](#) on page 102
- [“Supported software”](#) on page 102
- [“Installing the VCS agent for Oracle”](#) on page 103
- [“Installing Oracle Enterprise Manager server”](#) on page 103
- [“Installing Oracle”](#) on page 103
- [“Installing the Oracle management agent”](#) on page 104
- [“Creating and configuring Oracle database and listener on the first node”](#) on page 104
- [“Configuring Oracle on failover nodes”](#) on page 105
- [“Configuring the Oracle service group”](#) on page 105
- [“Configuring a virtual network name”](#) on page 106
- [“Configuring the listener for virtual network name”](#) on page 106
- [“Configuring the database service for virtual network name”](#) on page 107
- [“Configuring an additional Oracle management agent”](#) on page 109
- [“Adding the database to the OEM 10g Grid Control”](#) on page 110
- [“Making the additional agent highly available”](#) on page 111

## About Oracle Enterprise Manager 10g with VCS

Oracle Enterprise Manager (OEM) 10g allows users to manage Oracle components, including Oracle databases, through the Grid Control Management interface.

This appendix covers general instructions on how to install the Oracle 10g Grid Control Management Agent, and detailed step-by-step instructions on how to set up the Oracle Enterprise Manager 10g Grid Control to enable users to manage Oracle databases from the Oracle Enterprise Manager console, in a VCS cluster.

Perform the steps in the given order to configure Oracle Enterprise Manager 10g Grid Control to monitor databases in a VCS environment.

## Supported software

- Oracle 10g, Release 2 (10.2.0.1.0) Standard Edition or Enterprise Edition with Windows Server 2003 (Standard Edition, Enterprise Edition, or Datacenter Edition) (SP1 required, SP2 supported, but not required for all editions)
- Oracle Enterprise Manager 10g Grid Control Release 10.1.0.3
- Storage Foundation HA for Windows (SFW HA) with the Veritas Cluster Server database agent for Oracle

## Installing the VCS agent for Oracle

Install the VCS database agent for Oracle on all the cluster nodes.

See [Chapter 2, “Installing the VCS agent for Oracle”](#) on page 17.

## Installing Oracle Enterprise Manager server

Install the Enterprise Manager server on a separate server. The Enterprise Manager server should not be a part of the cluster.

### To install the Enterprise Manager server

- 1 From the Oracle Enterprise Manager CD, double-click Setup.exe to launch the Oracle Universal Installer.
- 2 On the Welcome panel, click **Next**.
- 3 On the Specify File Locations panel, specify the appropriate paths required for the installation and click **Next**.
- 4 On the Select a Product to Install panel, choose **Enterprise Manager 10g Grid Control Using a New Database 10.1.0.3.0** and click **Next**.
- 5 Follow the instructions of the installer. Refer to the Oracle product documentation for more information.

At the end of the installation, from the Summary page, make a note of the the URLs for connecting to the Oracle Enterprise Manager Grid Control and Application Server Control, the instance name, the user account details, and the connection details. You may need this information to complete the configuration.

## Installing Oracle

Install Oracle on all the cluster nodes.

Refer to the following topics:

- See [“Prerequisites for installing Oracle”](#) on page 36.
- See [“Managing storage using SFW”](#) on page 39.
- See [“Creating a temporary service group”](#) on page 47.
- See [“Bringing the temporary service group online”](#) on page 48.
- See [“Installing Oracle”](#) on page 36.

Do not create the Oracle database yet. We will create and configure the database later in the flow.

## Installing the Oracle management agent

Install the Oracle Management Agent on all the cluster nodes under the same Oracle home path.

### To install the Oracle Management Agent

- 1 From the Oracle Enterprise Manager CD, double-click Setup.exe to launch the Oracle Universal Installer.
- 2 On the Welcome panel, click **Next**.
- 3 On the Specify File Locations panel, specify the appropriate paths required for the installation and click **Next**.
- 4 On the Select a Product to Install panel, choose **Additional Management Agent 10.1.0.3.0** and click **Next**.
- 5 On the Specify Oracle Management Service Location panel, specify the host name (the Enterprise Manager Server name) and the port (default port) that the Management Agent should use to communicate with the Enterprise Management service.
- 6 The installer might display a Warning. Click **OK** to continue.
- 7 Click **Next**. Follow the instructions of the installer to complete the installation.
- 8 Repeat steps 1 to 7 on all the cluster nodes.

You must install the Oracle Additional Management Agent under the same Oracle Home Path on all the cluster nodes.

## Creating and configuring Oracle database and listener on the first node

Perform the following steps to create and configure Oracle database and listener on the first node in the cluster. Do not perform these steps on the failover nodes yet. Steps for failover nodes are described later in the flow.

### To create and configure an Oracle database and listener

- 1 Ensure that the volumes created for Oracle database, control files, and log files are mounted on the node.
- 2 Bring the temporary service group online on the node. This is the service group that you created while installing Oracle earlier. This service group contains an IP resource which is the virtual IP address for the databases and the listeners.



- 3 Create a Listener service.  
See “[Creating a listener service](#)” on page 50.
- 4 Configure the listener to use the virtual IP address.  
See “[Configuring the listeners to use the virtual IP address](#)” on page 50.
- 5 Use the Oracle Database Configuration Assistant (DBCA) to create the database. Create the database on the shared disks.
  - Start the Database Configuration Assistant (**Start > All Programs > Oracle-Oracle\_Home > Configuration and Migration Tools > Database Configuration Assistant**). This launches the database installer.
  - On the Welcome panel, click **Next**.
  - On the Operation panel, click **Create a database** and click **Next**.
  - On the Database Templates panel, click **Custom Database** and click **Next**.
  - On the Management Options panel (Step 4 of 12), choose **Use Grid Control for Database Management**.
  - Click **Next**. Follow the installer instructions and select other options as per your desired database configuration.See “[Creating an Oracle database on shared disk](#)” on page 48.
- 6 Configure the Oracle database on the shared disk. Complete all the procedures described in the topic.  
See “[Updating the tnsnames.ora files](#)” on page 52.
- 7 Configure the Oracle and listener services.  
See “[Configuring the Oracle and listener services](#)” on page 57.  
Follow all the steps given in the procedure with one exception. In step 2, bullet 6, choose **Local System Account** instead of **This Account**.

## Configuring Oracle on failover nodes

Configure Oracle on all the failover nodes that are going to be a part of the Oracle service group.

See “[Installing Oracle](#)” on page 36.

## Configuring the Oracle service group

Configure the Oracle service group.

See [Chapter 4, “Configuring the Oracle service group](#)” on page 61.

## Configuring a virtual network name

See the *Veritas Cluster Server Administrator's Guide* for more information on creating resources, bringing the resources online, and linking resources.

### To configure a virtual network name

- 1 Create a Lanman resource with the virtual server name.
- 2 Specify the attribute IPResName. The value of this attribute should be the IP resource name of the Oracle service group.  
Resource names are case-sensitive in VCS.
- 3 Create a dependency with the Lanman resource as the parent resource and the IP resource as the child resource.
- 4 Enable the Lanman resource and bring it online. This will bring the virtual network name online.
- 5 Create a dependency with the Oracle resource as the parent resource and the Lanman resource as the child resource.
- 6 Remove the dependency between the Oracle resource and the IP resource.

## Configuring the listener for virtual network name

Perform these steps on all the cluster nodes. Ensure that the Oracle service group is online on the node on which you perform these steps.

### To configure the listener for the virtual network name

- 1 Offline the listener service resource on the node.
- 2 In the listener.ora file, change the host name to the network name from the Lanman resource that you created.  
Replace  
`HOST=virtual_IP_address`  
with  
`HOST=network_name`  
The default location of the file listener.ora is  
`<ORACLE_HOME>\NETWORK\ADMIN\.`
- 3 Remove the database entries in SID\_LIST, if any.
- 4 Save and close the configuration.
- 5 Bring the listener service resource online on the node.

# Configuring the database service for virtual network name

Perform these steps to configure the database service for the virtual network name.

## To configure the database service for virtual network name

- 1 If the file `tnsnames.ora` does not contain entries for Database Service and Network Name, then create these entries using the Net Configuration Assistant. You must create these entries on all the cluster nodes.

- 2 Associate the database with the listener.

- Ensure that the initialization parameter file contains the following entries:

- `SERVICE_NAMES` (the name of the database service)
- `INSTANCE_NAME` (the name of the database instance)

Example SQL queries to ensure these entries:

```
show parameter INSTANCE_NAME
show parameter SERVICE_NAME
```

These parameters are created during installation or database creation.

- Use one of the following ways to configure the new attribute `listener_alias`:

Run the following SQL command:

```
SQL> ALTER SYSTEM SET
LOCAL_LISTENER='<listener_alias>' scope=spfile;
or
```

Add the following entry to the initialization parameter file (pfile/spfile):

```
LOCAL_LISTENER = <listener_alias>
```

- Define the parameter `listener_alias`. If your Oracle configuration uses the file `tnsnames.ora`, edit the file as instructed below. The default location of `tnsnames.ora` is `<ORACLE_HOME>\NETWORK\ADMIN`.

Add the following to `tnsnames.ora` file:

```
<listener_alias>=
(DESCRIPTION =
(AADDRESS=(Protocol=TCP)(HOST=virtual_name)(Port=default port))
)
```

The `listener_alias` parameter gets appended by the default domain name specified in the file `sqlnet.ora`.

- Take the listener service and the database service resources offline, and then bring them online.

- 3 Edit the initialization parameter file. For the dispatchers parameter, replace the virtual IP address with virtual name for dispatchers.

*If you use PFILE*

Edit the dispatchers parameter by adding or editing the HOST parameter. The edited dispatchers parameter should look like:

```
dispatchers = '(ADDRESS=(Protocol=TCP)
(HOST=virtual_name) (other entries))'
```

Here *virtual\_name* is the name of the Lanman resource.

*If you use SPFILE*

Log on to the Oracle database as administrator and edit the dispatchers parameter by adding or editing the HOST parameter. Type the following commands on the command prompt:

```
C:\>sqlplus "/as sysdba"
C:\>alter system set dispatchers =
'(ADDRESS=(Protocol=TCP) (HOST=virtual_name) (other
entries))' scope=spfile;
```

Here *virtual\_name* is the name of the Lanman resource.

## Configuring an additional Oracle management agent

Configure an additional Oracle Management Agent for the virtual server. Note that this agent is in addition to the agent that you installed earlier. The agent that you installed in “[Installing the Oracle management agent](#)” on page 104 is for the physical node, and this agent is for the virtual host.

Perform these steps on all the nodes. Make sure that the Oracle service group is online on the node on which you perform these steps.

### To configure an additional Oracle Management Agent

- 1 At the command prompt, type the following commands:

```
C:\> cd [Management Agent home]/bin
C:\[Management Agent home]/bin>emctl deploy agent [-n
WindowsServiceName]
AGENTSTATE_dir AGENTSTATE_hostname:port
DeployHostName:port
```

Here,

WindowsServiceName: the new service which is used for the HA of additional management agent. (We will create a GenericService resource for this later.)

AGENTSTATE\_dir: a new directory

AGENTSTATE\_hostname: virtual host name

port: a new port

DeployHostName: physical FQDN of the host

port: default port

Example:



```
C:\Oracle\product\10.1.0\em_1\bin>emctl deploy agent
-n OraEm10gOneVCSHost
E:\Oracle\product\10.1.0\em_1\vcshost\ vcshost:1831
vcsw2h283.vcsnet.com:1830
```

- 2 Start the Management Agent service (*OraEm10gOneVCSHost* in the above example) for the management agent and make sure it starts.
- 3 Stop the Management Agent service on this node.
- 4 Repeat steps 1 to 3 on the remaining cluster nodes.

## Adding the database to the OEM 10g Grid Control

Perform these steps to add the database to the OEM 10g Grid Control.

### To add the database to the OEM 10g Grid Control

- 1 Access the OEM Grid control using the following URL:  
`http://<EM server.domainName>:<port>/em`  
You should be able to get the exact URL from the Summary report generated while installing Oracle Enterprise Manager server.
- 2 Logon with user as sysman. The Enterprise Management Server will discover the virtual network in its target host. You have to remove the listener and the database for the physical node and add the listener and database for the virtual network name.
- 3 On the Enterprise Manager console, click **Targets** and then click **All Targets**.
- 4 Choose the database for the physical node, and click **Remove**. Click **Yes** to confirm the database removal. Remove the listener for the physical node in a similar way.
- 5 On the Enterprise Manager console, click **Targets** and then click **Databases**.
- 6 Click **Add**. The Enterprise Management Server will prompt you to select a host for which you want to add the database.
- 7 Choose the virtual network name and click **Continue**. The Enterprise Manager will discover the targets on that machine. Check if the database and listener names displayed are the ones that you wish to manage from the Enterprise Management Server.
- 8 Under Databases, click on the tools icon (under Configure)  to configure the database.
- 9 Specify the Database name and the Monitor Password. This password is later used when you login to the database to monitor it.
- 10 Click **Next** and follow the instructions to complete the database configuration. After you configure the database successfully, the tools icon will appear as  .

## Making the additional agent highly available

Add a GenericService resource to make the additional agent highly available.

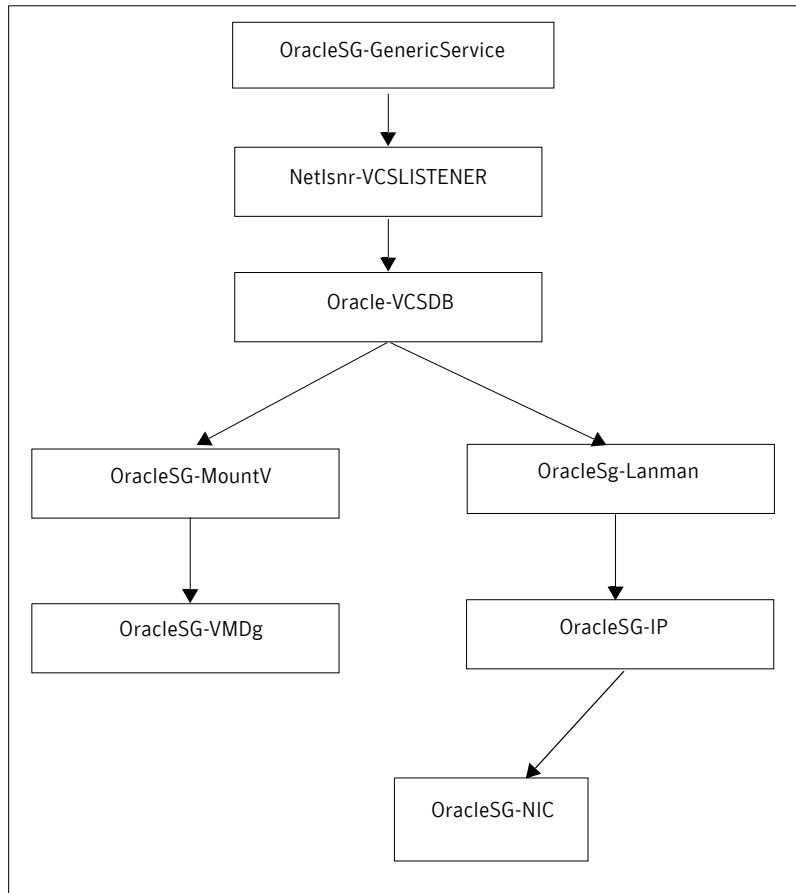
### To make the additional agent highly available

- 1 Set the startup type for the additional agent service to Manual, on all the nodes. You must do this before configuring GenericService resource.
- 2 Create a GenericService resource for the Oracle Management Agent service. (This is the service for the additional agent that you created in [“Configuring an additional Oracle management agent”](#) on page 109).
- 3 Specify the attributes DelayAfterOnline and DelayAfterOffline. Set the value as 30 seconds.

Sometimes the GenericService resource may go into an unknown state. This is because the Oracle agent service takes some time in coming up. The workaround for this is to increase the attributes *DelayAfterOnline* and *DelayAfterOffline*, or probe the resource after the Windows service has started.

- 4 Create a dependency with the GenericService resource as the parent resource and the Netlsnr resource as the child resource.
- 5 Enable the GenericService resource and bring it online.

## Sample Configuration



### Notes:

- The sequence in which database and the additional management agent is created is not critical as long as everything is configured with the virtual server.
- The additional Oracle Management Agent service will not come online until the network name (Lanman) is online on the same node.
- The Oracle Management Agent (for the physical node) can be online on both the nodes. Only the additional Oracle Management Agent (for the virtual server) needs to be online on one of the two nodes, as it depends on the virtual network name. This ensures that the host information is always available.



- Failover time may increase after the Management Agent is added to the VCS cluster group. After Oracle service group is failed over to the other node, the Enterprise Manager agent service should be restarted on the Enterprise Manager Server in order to connect to the database using Enterprise Manager.



# Index

## A

- agent operations
  - Netlsnr agent 13
  - Oracle agent 12
- attributes
  - Netlsnr agent 96
  - Oracle agent 93

## C

- cluster
  - configure LLT over ethernet 23
  - configure LLT over UDP 24
- clusters
  - configuring (HA) 19
- configuration wizard 63
- configuration, typical setup 16
- configure
  - LLT over ethernet 23
  - LLT over UDP using VCW 24
- configure cluster
  - ethernet 23
  - UDP 24
- configuring
  - cluster (HA) 19

## D

- database agent
  - about 12
  - configuring using wizard 63
  - error messages 86
  - installing 18
  - troubleshooting 84
  - typical setup 16
- database, creating 48
- DelayAfterOffline attribute
  - Netlsnr agent 96
  - Oracle agent 93
- DelayAfterOnline attribute
  - Netlsnr agent 96
  - Oracle agent 93

- dependency graph 98
- detail monitoring
  - about 12
  - configuring 79
  - disabling 81
  - enabling 80
- DetailMonitor attribute 94
- disk groups
  - importing 41
- disk groups, creating 39
- Domain attribute 93
- drive letter, assigning to volume 46

## E

- EncryptedPasswd attribute 93
- error messages
  - Netlsnr agent 88
  - Oracle agent 88
- error tags 86

## F

- failover 15

## I

- IndepthMonitorCount attribute 94

## L

- listener service
  - associating database 50
  - configuring 57
  - creating 50
- LLT over ethernet
  - configuring using VCW 23
- LLT over UDP
  - configuring using VCW 24

## M

- message logs 86

message tags 86

## N

Netlsnr agent

- attributes 96
- error messages 88
- operations 13
- type definition 95

Netlsnr agent attributes

- definitions 96
- DelayAfterOffline 96
- DelayAfterOnline 96
- ServiceName 96

## O

offlining service group 72

operations

- Netlsnr agent 13
- Oracle agent 12

Oracle 9i/10g

- associating database and listener 50
- configuring services 57
- creating database 48
- creating listener service 50
- installing and configuring 48

Oracle agent

- attributes 93
- error messages 88
- operations 12
- type definition 92

Oracle agent attributes

- DelayAfterOffline 93
- DelayAfterOnline 93
- DetailMonitor 94
- Domain 93
- Encryptedpasswd 93
- IndepthMonitorCount 94
- ServiceName 93
- SID 93
- SQLFile 95
- SQLTimeOut 94
- UserName 93

Oracle service, configuring 57

## R

resource type

- Netlsnr agent 95

Oracle agent 92

## S

Security Services

- configuring 26

service group

- switching 73
- taking offline 72

ServiceName attribute

- Netlsnr agent 96
- Oracle agent 93

SFW

- creating disk groups 39
- creating volumes 41
- mounting volumes 46

SID attribute 93

SQLFile attribute 95

SQLTimeOut attribute 94

switching service group 73

## T

troubleshooting information 84

type definition

- Netlsnr agent 95
- Oracle agent 92

## U

unmounting volumes 58

UserName attribute 93

## V

VCS

- configuring the cluster for HA 19

VSWF

- importing disk groups 41

## W

wizard 63