

eDP 8.2 Info Sheet - Integrating the eDiscovery Platform 8.2 & Enterprise Vault 12.0.1

Date: December 2017 Author: Technical Field Enablement (II-TEC@veritas.com)
Applies to: eDiscovery Platform 8.x and Enterprise Vault 12.x

Introduction

The purpose of this document is to outline the steps needed to integrate the Veritas eDiscovery Platform with Veritas Enterprise Vault

Overview

Integrating the demo images is a fairly straight forward process. The major steps are:

- Join the eDiscovery Platform appliance to a Domain
- Changing the accounts used by the esaEVCrawler & esaEVretriever services
- Installing the EV runtime API
- Perform discovery against the EV directory server
- Create an EV source account
- Create an EV source

Join the eDiscovery Platform appliance to the Domain

It is necessary to join the eDiscovery Platform to the same domain as the Enterprise Vault server(s)

Before you start on your quest to join Windows Server 2012 to a domain, make sure that you can resolve the Active Directory (AD) domain name using DNS. Pinging the Fully Qualified Domain Name (FQDN) ensures that at least one domain controller (DC) is available to process your domain join request.

Check DNS resolution

Open a command prompt window on Windows Server 2012 by clicking the blue PowerShell icon on the desktop Task Bar or by typing CMD on the Start screen and pressing ENTER.

In the command prompt window, type ping <FQDN>, replacing <FQDN> with the Fully Qualified Domain Name for your Active Directory domain. For instance, this might look like ad.contoso.com. Note that there's no need to include the name of any particular domain controller.

If you don't get a reply from the ping command, check that DNS is set up correctly on the machine that you are trying to join to the domain. There should be at least one DNS entry in the network card's IP configuration settings. You can check the network adapter's IP address configuration by typing ipconfig /all at the command prompt, where you should see at least one DNS server address listed. If a DNS server is present in the configuration but you still can't successfully resolve the domain's FQDN, you will need to do some more DNS and/or network troubleshooting.

Join the computer to a domain

Once you have established that DNS resolution is working correctly, open Server Manager from the icon on the desktop Task Bar or from the Start screen.

- In Server Manager, select Local Server in the left pane.
- In the right pane of Server Manager under Properties, click WORKGROUP.
- In the System Properties dialog on the Computer Name tab, click Change.
- In the Computer Name/Domain Changes dialog, click Domain, type the FQDN of your Active Directory domain and click OK as shown in Figure 1.

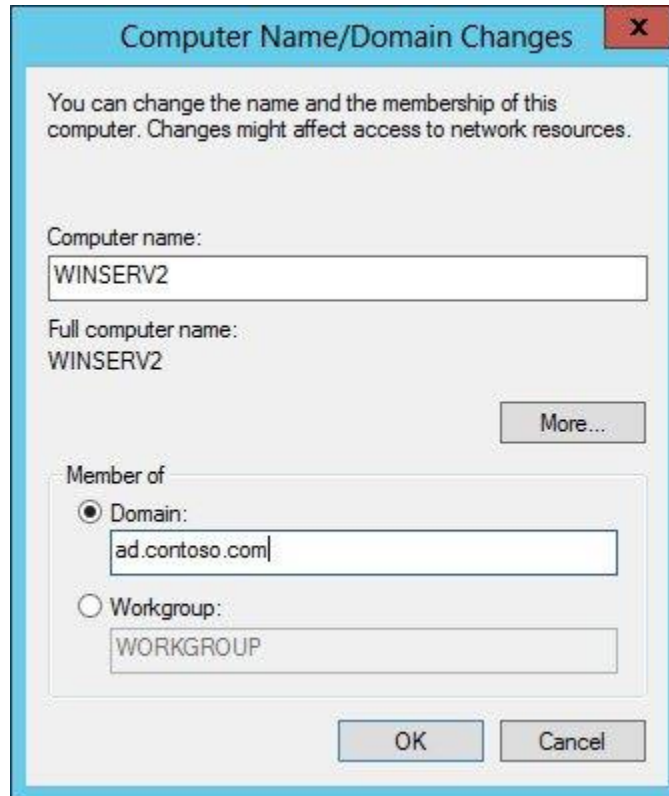


Figure 1 – Joining a Domain

- In the Windows Security dialog, type a domain administrator username and password, or the credentials of another user account with permission to add computers to the domain, and click OK.
- You should then see a welcome message to the domain. Click OK in the message dialog box.
- When prompted to restart the computer, click OK.
- Close the System Properties dialog.
- Click Restart Now in the Microsoft Windows dialog.

Log on as a domain user

Once the computer has rebooted, log on as a domain administrator or another domain account that has local administrator rights on the eDiscovery Platform Appliance by clicking the Switch User arrow on the logon screen and then select Other user. You can then log on to the server as a domain user. If you want

to log on with a domain user that happens to have the same name as a local user, type the domain username with the domain's FQDN suffix, such as administrator@ad.contoso.com

Configure the eDiscovery Platform to connect to EV.

The next step is to make the service account that will be used to connect to Enterprise Vault a local administrator of the eDiscovery Platform appliance, then modify the two eDiscovery Platform EV related services to use the EV Service account.

- Click start -> enter "Local Users" -> Press Enter
- Select "Groups" on the left.
- Double click the "Administrators" group on the right. Click Add
- Enter the *domain\evservice* information where *domain* is the name of the domain the eDiscovery Appliance is part of and the *evservice* is the name of the service account that is being used to collect from Enterprise Vault.
- Select "OK". Close the Local Users and Groups window.
- Open the services applet
- Double click on the EsaEVCrawlerService service.
- Select the "Log On" tab. Change the logon account to *domain\evservice* Enter the service account password and click OK

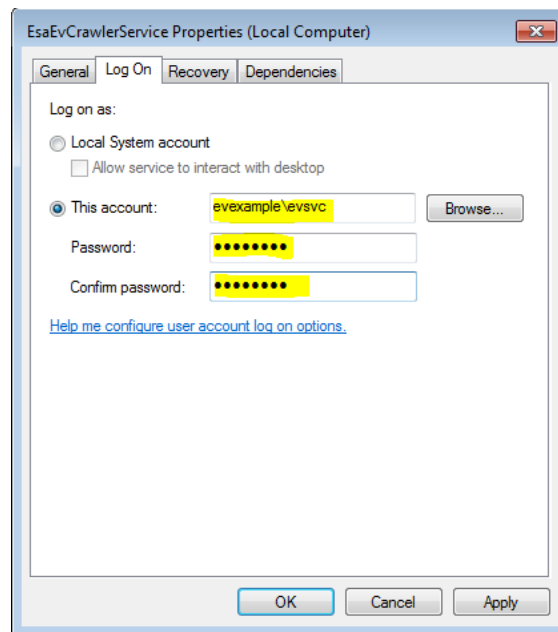


Figure 2 – Service Accounts

- Repeat this process for the EsaEvRetrieverService service.
- Stop both services if they are running (they shouldn't be, but just in case)

Install the Enterprise Vault 10.0.1 API runtime

It is necessary to ensure that the EV API runtime installed in the eDiscovery Platform appliance matches the version of EV you are integrating with. If you are unsure uninstall the EV API runtime from the eDiscovery Platform VM and the install the matching EV API Runtime from the EV installation media.

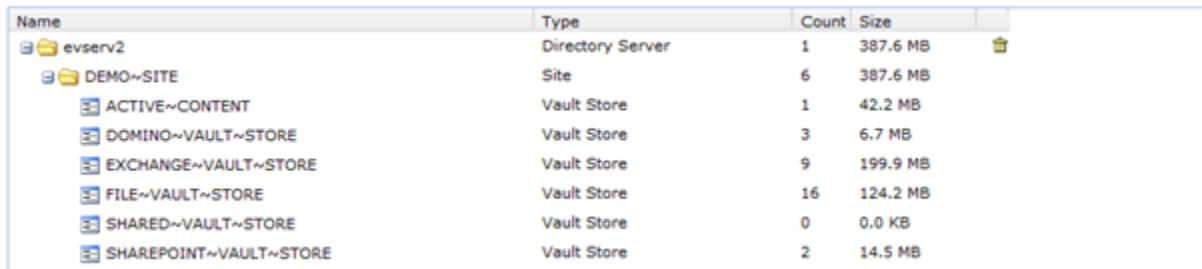
Perform Discovery against EV

We're done with most of the prep work now. Everything else will be done from the within the eDiscovery Platform.

- Login to the eDiscovery Platform UI. If you open a browser while logged in as the local administrator account, the homepage should be set to take you there. If not open a browser and go to <http://localhost>
- After logging into the eDiscovery Platform, Click System on the top right.
- Select "Directories and Servers" then select Veritas EV
- In the Directory Server Host Name box enter the hostname of the EV directory server.
- Click Start Discovery

If you receive an error regarding not being able to communicate with the crawler service, restart the EsaEVCrawlerService and EsaApplicationService services, close and reopen the browser, rinse and repeat the discovery.

- Once complete, the Discovery Status should display "Idle – Finished EV Discovery"
- You should now be able to see the site and stores listed under your EV server name.

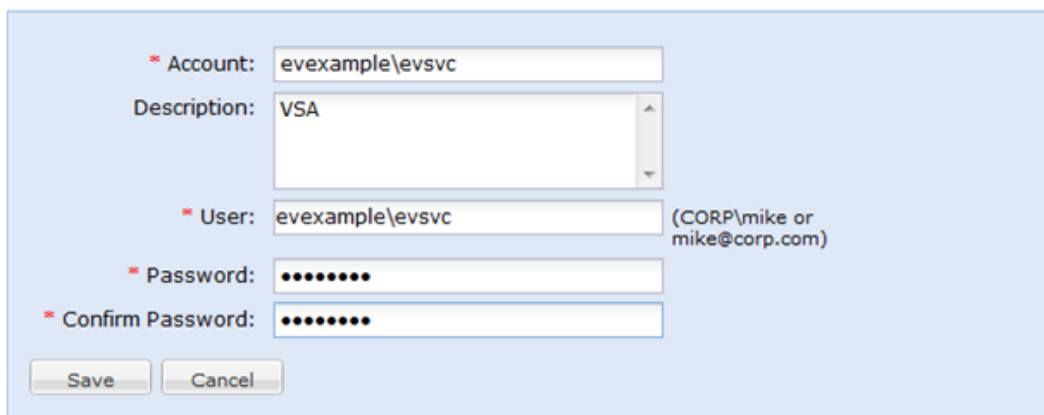


Name	Type	Count	Size	
evserv2	Directory Server	1	387.6 MB	
DEMO~SITE	Site	6	387.6 MB	
ACTIVE~CONTENT	Vault Store	1	42.2 MB	
DOMINO~VAULT~STORE	Vault Store	3	6.7 MB	
EXCHANGE~VAULT~STORE	Vault Store	9	199.9 MB	
FILE~VAULT~STORE	Vault Store	16	124.2 MB	
SHARED~VAULT~STORE	Vault Store	0	0.0 KB	
SHAREPOINT~VAULT~STORE	Vault Store	2	14.5 MB	

Figure 3 – EV Site List

Define EV Source Account and EV Sources

- Click All Collections -> Source Accounts
- Click Add at the bottom right. Enter the `domain\evservice` as the account name and the User field then enter the password for the service account twice as shown in Figure 4.



* Account:

Description:

* User: (CORP)mike or mike@corp.com

* Password:

* Confirm Password:

Figure 4 – EV Source Account Setup

- Click Sources
- Click Add at the bottom right.
- Enter the information for the EV source Type for example
 - Source Name: Enterprise Vault Exchange Mailbox Archive
 - Description: EVEXAMPLE Exchange Mailbox Archive
 - Type: Enterprise Vault
 - Site: *EV Site Name*
 - Archive Type: EV Exchange Mailbox Archive
 - Account: Click Browse and select the source account name
- Click Save

Figure 5 – Add Source

It is necessary to repeat the previous steps to create Sources for each of the archive types.